

1 Computational flow cytometry immunophenotyping at diagnosis is 2 unable to predict relapse in childhood B-cell Acute Lymphoblastic 3 Leukemia

4 Álvaro Martínez-Rubio^{1,2,*}, Salvador Chulián^{1,2}, Ana Niño-López^{1,2}, Rocío Picón-González^{1,2}, Juan F.
5 Rodríguez Gutiérrez³, Eva Gálvez de la Villa³, Teresa Caballero Velázquez⁴, Águeda Molinos
6 Quintana⁴, Ana Castillo Robleda^{5,6}, Manuel Ramírez Orellana^{5,6,7}, María Victoria Martínez Sánchez^{8,9},
7 Alfredo Minguela Puras^{8,9}, José Luis Fuster Soler^{9,10}, Cristina Blázquez Goñi^{2,4}, Víctor M.
8 Pérez-García¹¹, and María Rosa^{1,2}

9 ¹Department of Mathematics, University of Cádiz, 11510 Puerto Real, Spain

10 ²Biomedical Research and Innovation Institute of Cádiz (INiBICA), Puerta del Mar University Hospital, 11009 Cádiz, Spain

11 ³Department of Paediatric Hematology and Oncology, Jerez Hospital, 11407 Jerez de la Frontera, Spain

12 ⁴Department of Hematology, Virgen del Rocío University Hospital, Instituto de Biomedicina de Sevilla (IBIS)/CSIC, Universidad
13 de Sevilla, 41013 Sevilla, Spain

14 ⁵Oncohematology Unit, Niño Jesús University Children's Hospital, 28009 Madrid, Spain

15 ⁶Foundation for Biomedical Research Niño Jesús University Children's Hospital, 28009 Madrid, Spain

16 ⁷Health Research Institute La Princesa, 28009 Madrid, Spain

17 ⁸Immunology Service, Clinical University Hospital Virgen de la Arrixaca, 30120 Murcia, Spain

18 ⁹Instituto Murciano de Investigación Sanitaria (IMIB), University of Murcia, 30120 Murcia, Spain

19 ¹⁰Department of Pediatric Hematology and Oncology, Clinical University Hospital Virgen de la Arrixaca, 30120 Murcia, Spain

20 ¹¹Mathematical Oncology Laboratory (MOLAB), Department of Mathematics, Instituto de Matemática Aplicada a la Ciencia y la
21 Ingeniería, Universidad de Castilla-La Mancha, Ciudad Real, Spain.

22 *Correspondence: alvaro.martinezrubio@uca.es

23

24 SUMMARY

25 **B-cell Acute Lymphoblastic Leukemia is the most prevalent form of childhood**
26 **cancer, with approximately 15% of patients undergoing relapse after initial**
27 **treatment. Further advancements depend on novel therapies and more precise**
28 **risk stratification criteria. In the context of computational flow cytometry and**
29 **machine learning, this paper aims to explore the potential prognostic value of**
30 **flow cytometry data at diagnosis, a relatively unexplored direction for relapse**
31 **prediction in this disease. To this end, we collected a dataset of 252 patients**
32 **from three hospitals and implemented a comprehensive pipeline for**
33 **multicenter data integration, feature extraction, and patient classification,**
34 **comparing the results with existing algorithms from the literature. The analysis**
35 **revealed no significant differences in immunophenotypic patterns between**
36 **relapse and non-relapse patients and suggests the need for alternative**
37 **approaches to handle flow cytometry data in relapse prediction.**

38 INTRODUCTION

39 B-cell progenitor Acute Lymphoblastic Leukemia (BCP-ALL) stands as the most
40 prevalent pediatric cancer, impacting approximately 40,000 children globally each
41 year. Recent clinical trials report survival rates exceeding 90%¹. However, the
42 remaining 15% experience relapse or refractory disease, with this subset facing a
43 significantly worse prognosis². The advancements in overall survival over the past

44 decades can be attributed to the implementation of intensive multi-agent
45 chemotherapy regimens tailored to specific risk groups. These groups are identified
46 through cytomorphology, molecular biology, cytogenetics, and immunology³. Despite
47 these strides, the latest data suggests that improvements in overall survival will not
48 be reached by further adjusting regimes or incorporating novel chemotherapeutic
49 agents. Instead, hopes for finally achieving a manageable disease lie in
50 immunotherapies for relapsed patients and refined risk stratification criteria at
51 diagnosis⁴. New strategies are therefore necessary to identify and select patients
52 unresponsive to standard chemotherapy and who are at a heightened risk of relapse,
53 given the inaccuracies of current risk allocation schemes⁵.

54 Quantitation of minimal residual disease levels early during therapy, either by flow
55 cytometry (FC) or by clonospecific qPCR, has been consistently reported as a major
56 prognostic factor^{6,7}. Despite the fact that FC generates an extensive dataset of
57 single-cell information, it is currently not utilized in risk stratification. In other words,
58 the immunophenotype of the leukemic clone at diagnosis lacks prognostic value.
59 Several factors impede the comprehensive exploitation of this type of data. One of
60 them is the inherent challenge of managing high-dimensional data, especially in the
61 clinical setting⁸. Another reason is the difficulty in gathering a sufficiently large
62 retrospective cohort of patients. Indeed, the lack of prognostic value means that they
63 are less frequently published than other clinical and pathologic information and
64 therefore stored more casually. Lastly, despite ongoing efforts to standardize
65 instruments and protocols^{9,10}, differences in adherence to standards, cytometer
66 settings, and calibration continue to pose significant challenges for multicenter data
67 integration¹¹.

68 The recent emergence of computational flow cytometry¹² has paved the way for
69 automated and more thorough analyses of this type of data. This interdisciplinary
70 field brings together flow cytometry with modern pattern recognition and statistical
71 techniques for data processing and analysis. In combination with machine learning,
72 these techniques can be applied for survival or relapse prediction, sample
73 classification, or subpopulation detection¹³. Surprisingly, there is a notable lack of
74 applications of these tools in the context of BCP-ALL, with only a few published
75 works. For instance, a study by Reiter et al.¹⁴ gathered a dataset of 337 bone marrow
76 samples and employed supervised machine learning to automate minimal residual
77 disease assessment on day +15. Good et al.¹⁵ compiled data from 54 patients and
78 developed a classifier that organized cells based on developmental stage and
79 achieved a high accuracy in relapse prediction¹⁵. Two additional preliminary works
80 from our group complete this landscape^{16,17}, one based on percentile differences of
81 marker expression and the other on topological data analysis.

82 In this work, we set out to fill this gap and determine whether standard flow
83 cytometry panels at the time of diagnosis contain prognostic information. To this end
84 we collected the largest database of FC data of children with BCP-ALL for a
85 computational analysis yet. We integrated tools from computational flow cytometry for
86 data preprocessing and normalization and designed a comprehensive pipeline for

87 feature extraction and classification. We identified cellular subpopulations across the
88 cohort of patients and we assessed the prognostic value of cell abundance and
89 marker expression with a variety of metrics. We additionally contrasted and
90 confirmed our results with other algorithms for biomarker discovery already presented
91 in the literature. Contrary to our initial hypothesis, our results dismiss the utility of
92 differential expression and distribution-based feature engineering for FC-based
93 classification. We conclude the study by offering insights into the absence of
94 discernible differences between relapse and non-relapse patients and proposing
95 potential avenues for further exploration in this line of research.

96 **RESULTS**

97 **Patient cohort is representative of childhood BCP-ALL population**

98 We collected data from 252 patients from three hospitals, diagnosed between 2011
99 and 2022. Risk stratification criteria, treatment protocols, and outcomes are detailed
100 in the 'Methods' section. Table S1 shows their clinicopathologic characteristics. The
101 full cohort presents a relapse rate of 17,5%, in line with recent world-wide reports¹⁸.
102 Most patients present a common immunophenotype and belong to the intermediate
103 risk group. The frequency of genetic alterations is also within common ranges reported
104 in European countries¹⁹. After preprocessing and filtering (see 'Methods' and Figure
105 S1), 188 patients were retained for analysis. Their clinicopathologic characteristics
106 are shown in Table 1. The only relevant differences with respect to the full cohort are
107 a lower proportion of high-risk patients (2.7% VS 4.0%) and a higher percentage of
108 relapse patients (20.2% VS 17.5%), still within reported ranges.

109 **Normalization and merging allows integration of multi-center, multi-sample flow 110 cytometry data**

111 The cornerstone of the study is FC data at diagnosis. The joint analysis of multicenter
112 data presents several challenges that needed to be addressed prior to the
113 classification part of the study. Although FC panels for BCP-ALL are now
114 standardized¹⁰, we needed to account for differences arising from the use of different
115 cytometers, changes in machine calibration with time and other batch effects.
116 Furthermore, due to the maximum number of fluorochromes that can be used in a
117 single experiment, each patient's sample is split in different tubes or aliquots that
118 needed to be integrated if all protein markers were to be analysed together.

119 These sources of inter-center and inter-aliquot heterogeneity were addressed here
120 by means of a modified min-max transformation and a quantile normalization step
121 (Figure S2, see 'Methods'). As for the combination of several FC files into a single
122 file, various methods have already been developed, relying mostly on nearest
123 neighbor imputation and clustering-based imputation. In order to choose the most
124 suitable method we used the Earth Mover Distance (EMD) to compare the distribution
125 of a marker in the original tube versus the imputed file²⁰, following a recent review on

	Dataset 1 (HVR) (N=46)	Dataset 2 (HVA) (N=47)	Dataset 3 (HNJ) (N=95)	Total (N=188)
Sex - no. (%)				
Male	27 (58.7)	24 (51.1)	44 (46.3)	95 (50.5)
Female	19 (41.3)	23 (48.9)	51 (53.7)	93 (49.5)
Age at diagnosis - yr				
Median	3	5	4	4
Range	0 - 13	0 - 15	0 - 16	0 - 16
Long term status -no. (%)				
Relapse	11 (23.9)	4 (8.5)	23 (24.2)	38 (20.2)
No relapse	35 (76.1)	43 (91.5)	72 (75.8)	150 (79.8)
Immunophenotype - no. (%)				
Common	29 (63.0)	36 (76.6)	88 (92.6)	153 (81.4)
Pre-B	14 (30.4)	9 (19.1)	4 (4.2)	27 (14.4)
Pro-B	2 (4.3)	2 (4.3)	3 (3.2)	7 (3.7)
Mixed	1 (2.2)	0 (0)	0 (0)	1 (0.5)
Bone Marrow blasts at diagnosis - %				
Median	80.4	78.8	85.0	81.7
Range	10.0 - 96.3	25.6 - 95.0	30.0 - 99.0	10.0 - 99.0
Leukocytes - cell/nL				
Median	8.29	7.16	11.07	8.61
Range	1.61 - 214.21	0.54 - 336.19	0.21 - 294.0	0.21 - 336.19
Central Nervous System involvement - no. (%)				
Yes	2 (4.3)	2 (4.3)	10 (10.5)	14 (7.4)
No	44 (95.7)	45 (95.7)	85 (89.5)	174 (92.6)
Risk at diagnosis - no. (%)				
High	1 (2.2)	3 (6.4)	1 (1.1)	5 (2.7)
Intermediate	20 (43.5)	24 (51.1)	76 (80.0)	120 (63.9)
Low	25 (54.3)	20 (42.5)	18 (18.9)	63 (33.4)
Karyotype - no. (%)				
High hyperdiploidy (>50)	12 (26.2)	2 (4.2)	12 (12.6)	26 (13.8)
Hyperdiploidy (47-50)	3 (6.5)	1 (2.1)	10 (10.5)	14 (7.4)
Normal (46)	16 (34.8)	7 (14.9)	40 (42.1)	63 (33.5)
Hypodiploidy (40-45)	2 (4.3)	0 (0)	5 (5.3)	7 (3.7)
Low hypodiploidy (<40)	1 (2.2)	0 (0)	0 (0)	1 (0.6)
No metaphases	11 (24.0)	6 (12.8)	26 (27.4)	43 (22.9)
No information	1 (2.2)	31 (66.0)	2 (2.1)	34 (18.1)
Chromosomal alterations - no. (%)				
ETV6/RUNX1 t(12;21)	7 (15.2)	10 (21.3)	24 (25.2)	41 (21.8)
TCF3/PBX1 t(1;19)	1 (2.2)	1 (2.1)	4 (4.2)	6 (3.2)
MLL rearrangement	4 (8.7)	1 (2.1)	1 (1.1)	6 (3.2)
BCR/ABL1 t(9;22)	0 (0)	0 (0)	2 (2.1)	2 (1.1)
No alterations	32 (69.6)	34 (72.3)	63 (66.3)	129 (68.6)
No information	2 (4.3)	1 (2.1)	1 (1.1)	4 (2.1)

Table 1. Summary of clinicopathologic characteristics of patients retained for analysis. HVR = Virgen del Rocío Hospital, HVA = Virgen de la Arrixaca Hospital, HNJ = Niño Jesus Hospital.

126 the topic²¹. We compared the basic approach²² (direct nearest neighbor imputation)
 127 with the algorithms cytoBackBone²³ (non-ambiguous nearest neighbor imputation),
 128 CYTOFmerge²⁴ (median of 50 nearest neighbor imputation) and cyCombine²⁵
 129 (imputation by drawing from probability density estimates). Figure 1A shows the EMD
 130 of all patients for each method and each marker. Ideally, the merged marker would
 131 display the same distribution as the actual measurements. Figures 1B and 1C show
 132 the tradeoff between merging quality, number of cells per aliquots and runtime. The
 133 conclusion was that the basic approach (direct nearest neighbor imputation)

134 performed better and faster than the other methodologies, preserving the maximum
 135 number of cells. CyCombine and cytoBackBone performed similarly, with longer
 136 computation time associated with the removal of ambiguous cells. The conclusions
 137 were the same across hospitals (Figures S3 and S4). In the light of this result, we
 138 chose to continue the analysis with the basic approach and repeat it with the
 139 cyCombine method in order to confirm the stability of the results.

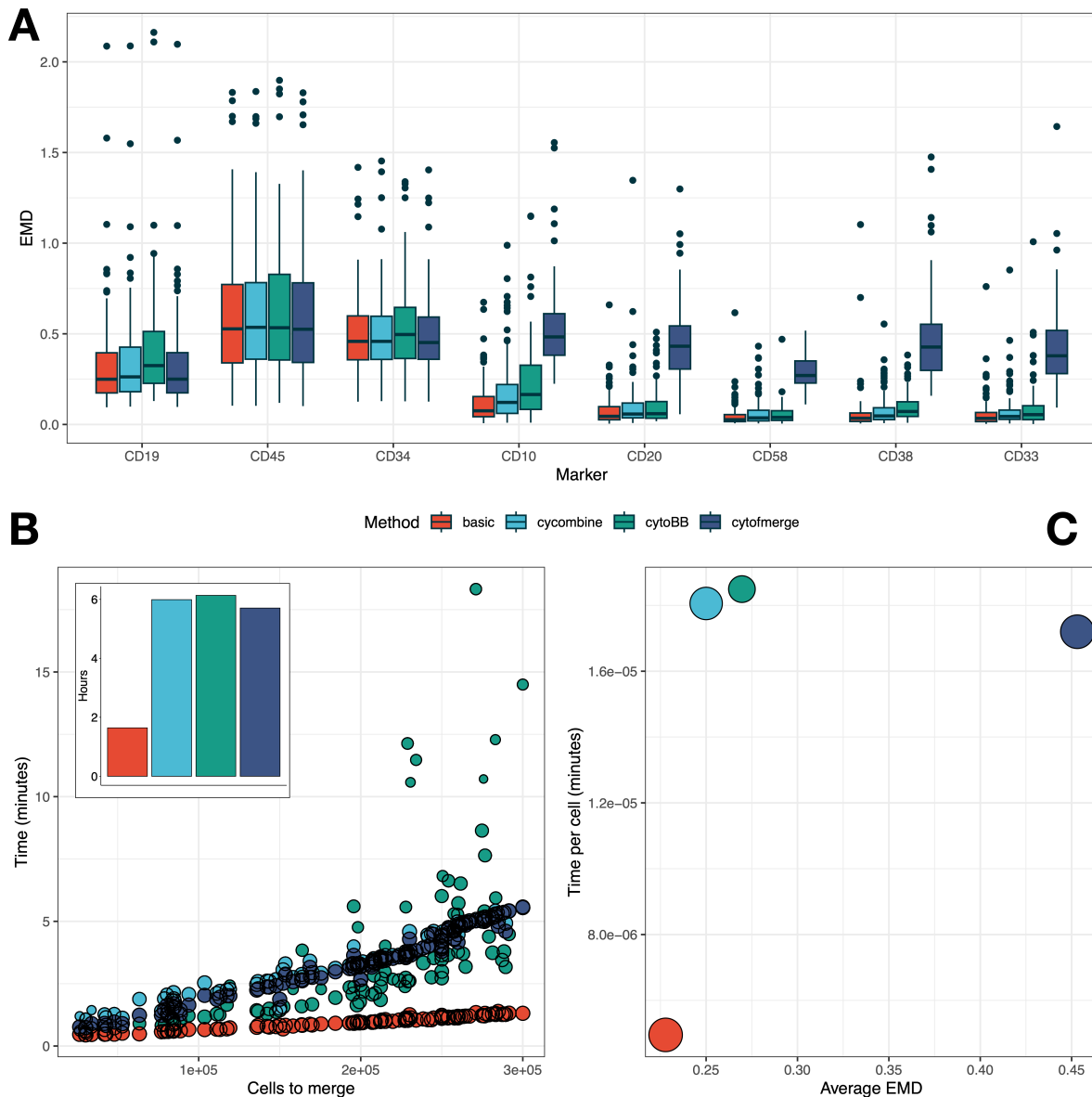


Figure 1. Comparison of file merging methods. **A.** Boxplots summarizing the distributions of Earth's Mover Distance (EMD) for each marker. The box includes median (horizontal line) and interquartile range (IQR). **B.** Dots represents the runtime for each patient, with the x-axis displaying the number of cells per patient. Marker size represents the ratio between the number of cells to merge and the number of cells in the resulting file. Inset displays accumulated computation time for the complete cohort. **C.** Comparison between average EMD and runtime per cell. Marker size represents the ratio between the number of cells to merge and the number of cells in the resulting file, averaging all patients. Patients analysed here belong to hospital HNJ. Similar results are obtained for hospitals HVA and HVR (Figures S3 and S4).

140 **Clustering and dimensionality reduction techniques reveal common structure** 141 **and subpopulations across patients**

142 After preprocessing, file merging and patient selection, the final set of FC markers
143 included B-cell markers CD19, CD10 and CD20; pan-leukocyte markers CD45 and
144 CD38; hematopoietic stem cell marker CD34 and myeloid markers CD58 and CD66c.
145 The next step was to visualize the structure of the bone marrow of all patients. Cell
146 subpopulations can be obtained by means of clustering techniques, which replace the
147 traditional manual analysis or ‘gating’²⁶. Here, we pooled all the files together and
148 clustered via FlowSOM²⁷. This algorithm produces a low dimensional visualization of
149 the structure of the data in two steps. Firstly, it clusters on a higher resolution, which
150 we manually set to 50 clusters (the influence of this number of clusters on the results
151 will be explored later). Secondly, it obtains an optimal lower number of metaclusters
152 by aggregating with consensus clustering. It then creates a minimum spanning tree
153 visualization in which each cluster is represented by a node, and similar clusters are
154 linked. This is shown in Figure 2. Marker expression per cluster is shown in Figure
155 2A, while Figure 2B represents the metacluster to which each cluster belongs. Each
156 metacluster is identified with a cell subpopulation that can be manually annotated. The
157 number of patients that contribute to each cluster is shown in Figure 2C, split in relapse
158 (R) and non-relapse patients (NR).

159 To visualize the clustering information on a single-cell level we used UMAP. This
160 dimensionality reduction technique computes a two-dimensional representation that
161 preserves the structure of the cell subpopulations²⁸. The result is shown in Figure 2D.
162 Each cell is colored according to FlowSOM metacluster. For comparison, the marker
163 expression of each region of the UMAP embedding is shown in Figure 2E. We note
164 that both FlowSOM and UMAP yield a similar structure, as shown by the proximity of
165 the different metaclusters and UMAP regions. FlowSOM obtained an optimal number
166 of 8 metaclusters. There were two main metaclusters (1 and 2) that comprised most
167 of the CD19+ cells and that we identified with the leukemic clone. These are immature
168 B-cells with intermediate expression of CD45 and heterogeneous expression of CD34
169 and CD38. The two metaclusters were distinguished by relative expression of CD66c.
170 We also assigned metacluster 6 to the leukemic cell population, distinguished from
171 the other two by a negative expression of CD10. These metaclusters contained the
172 majority of cells since the bone marrow of BCP-ALL patients at diagnosis are almost
173 fully invaded. Metacluster 8, with a high expression of CD45 and CD20, represents
174 healthy, mature B-cells. The remaining metaclusters represent other bone marrow
175 cell types, including T-cells with high expression of CD45 (metacluster 7) and myeloid
176 subpopulations (metaclusters 3, 4 and 5). While these subpopulations are seldom
177 considered in B-cell malignancies, here we also explored them for prognostic value.
178 With respect to the robustness and generality of these results, we note that most of the
179 clusters contained more than 80% of the patients. When considering the metacluster
180 scale, virtually all patients contribute to all cell subpopulations, with the exception of the
181 minor myeloid subpopulations (metacluster 4). This confirmed that all patients adhere
182 to the global structure described in this section.

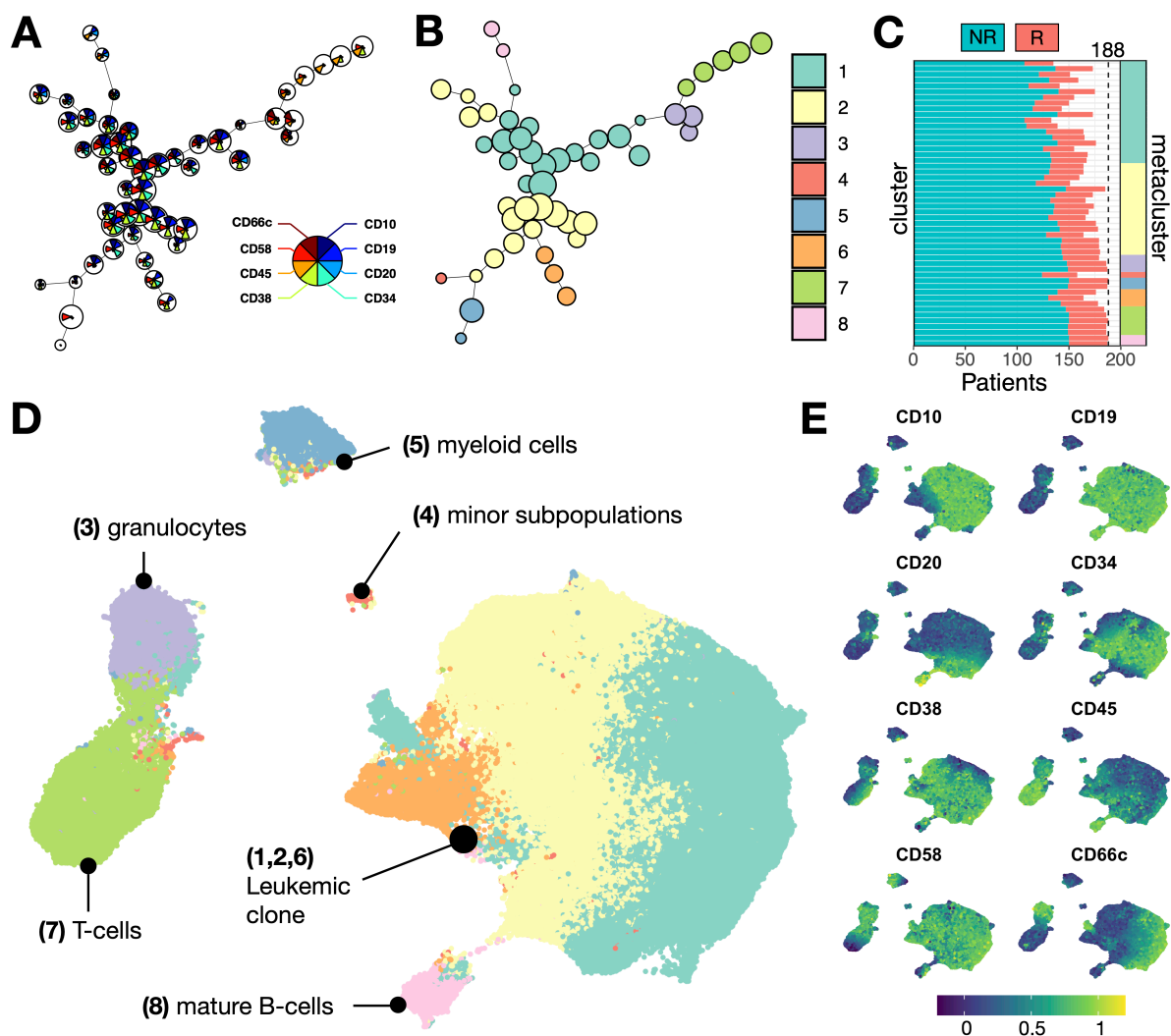


Figure 2. Clustering and visualization of flow cytometry data. **A.** Minimum spanning tree generated by FlowSOM. Each node represents a cluster, and similar clusters are linked. Pie plot represent the relative expression of protein markers within each cluster. **B.** Minimum spanning tree generated by FlowSOM. Color denotes the metacluster to which each cluster belongs. **C.** Number of patients per cluster colored according to outcome (R=relapse, NR=non-relapse). Clusters are sorted according to the metacluster they belong to (vertical bar on the left). Vertical dashed line represents the maximum amount of patients. **D.** Single-cell UMAP embedding. Each cell is colored according to the FlowSOM metacluster it belongs to. **E.** Single-cell UMAP embedding. Each cell is colored according to relative marker expression.

183 Individual patient cells per cluster are unable to predict relapse

184 Figure 2C shows that only a number of clusters contain a proportion of relapse
 185 patients above the baseline 20%, without any particular cluster being dominated by
 186 either relapse or non-relapse patients. To investigate the predictive power of cell
 187 abundance per cluster, however, we had to check not only the number of patients but
 188 also how many cells each patient contributed with. The idea was to test if relapse
 189 patients tended to participate more in a subset of clusters, or if instead all patients
 190 contributed equally. To do so, we calculated the percentage of cells per cluster for

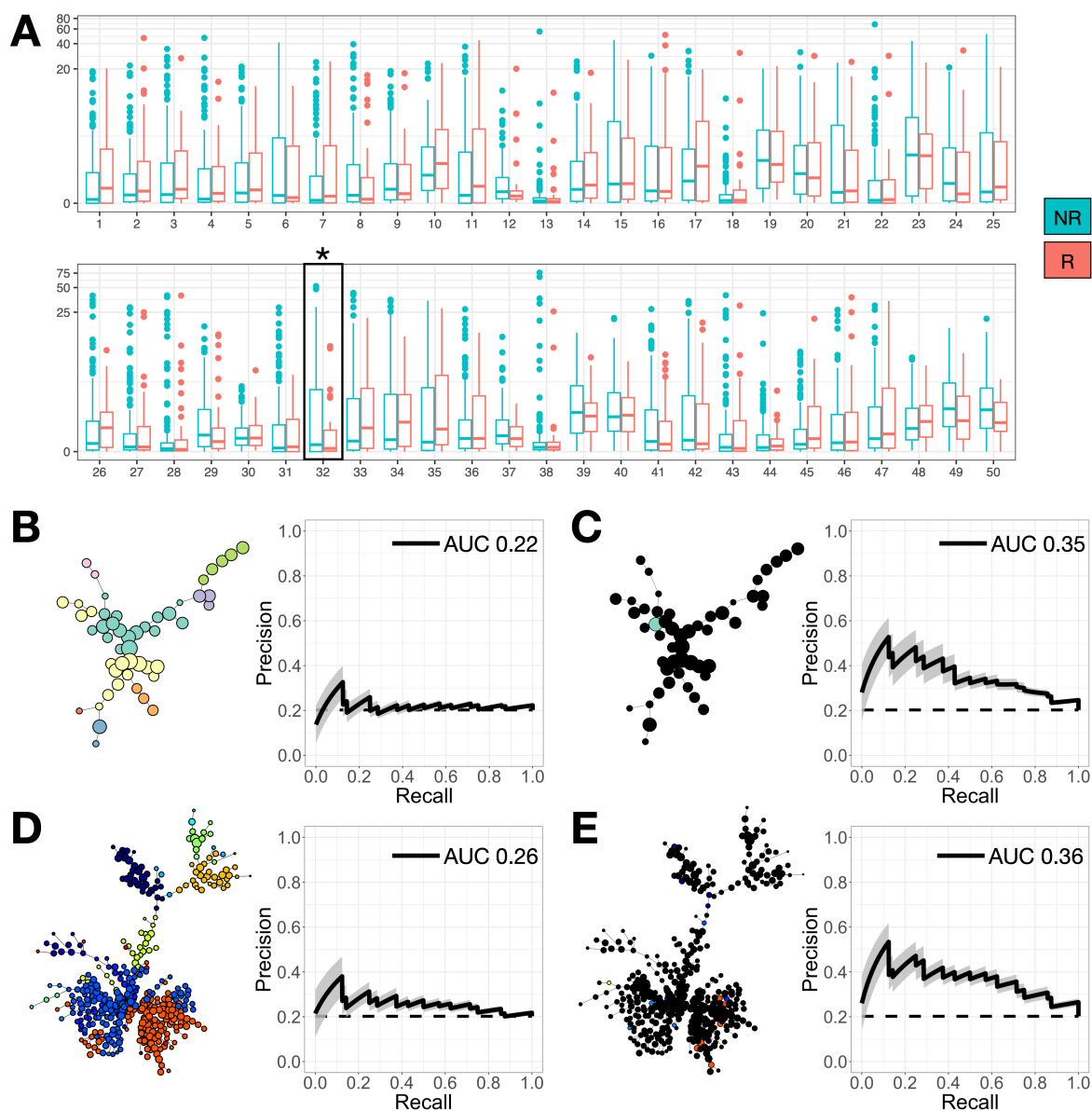


Figure 3. Results of abundance-based classification. **A.** Comparison of cell percentage per cluster between relapse (R) and non-relapse (NR) patients. Boxplot includes median and IQR. The scale has been transformed with an inverse hyperbolic sine for clarity. Black box and asterisk denote clusters with significant differences in cell abundance (two-sided Kolmogorov-Smirnov test). **B.** Classification results in terms of Area Under the Precision Recall Curve using information from all clusters. The shaded region represents the standard deviation of 10 repetitions of the classification routine. Horizontal dashed line represents the baseline precision. **C.** Classification results in terms of Area Under the Precision Recall Curve using information from clusters with significant differences in cells per cluster (shown in color in the minimum spanning tree). **D.** Classification results in terms of Area Under the Precision Recall Curve using information from all clusters, for a new FlowSOM clustering with 400 clusters. **E.** Classification results in terms of Area Under the Precision Recall Curve using information from clusters with significant differences in cells per cluster (shown in color in the minimum spanning tree), for the new FlowSOM clustering with 400 clusters.

191 every patient, and the results are shown in Figure 3A. Only one cluster (cluster 32 in
 192 metacluster 1) exhibited statistical significance ($p < 0.05$), as determined by a
 193 two-sided Kolmogorov-Smirnov test.

194 This, however, was insufficient to conclude the lack of predictive power of the

195 number of cells per cluster. Indeed, although each cluster individually did not present
196 clear differences, non-linear interactions between all clusters could create a region in
197 which relapse patients are more clearly distinguished. We tested this by building a
198 classifier for relapse prediction that uses cells per cluster as input. We implemented a
199 nested cross-validation scheme and included four supervised machine learning
200 algorithms: Naive Bayes, Random Forest, K-Nearest-Neighbors and linear Support
201 Vector Machine. For robustness, we repeated the classification 10 times. More
202 details about the classification routine can be consulted in the 'Methods' section. The
203 average Precision-Recall curve obtained is shown in Figure 3B. We used the Area
204 Under the Precision-Recall Curve (AUCPR) to summarize the result. This is
205 equivalent to the average precision of the classifier and can be interpreted as the
206 probability that a predicted relapse is a true relapse. Its value was close to the
207 baseline precision, which is the proportion of relapse patients in our dataset (0.202,
208 Table 1). This means that the features used for classification had no prognostic value.
209 We repeated the classification but using only the cluster in which significant
210 differences were found (Figure 3C). We obtained a higher precision compared to
211 using all information, although still close to the baseline classifier. To explore the
212 possibility of finding more relevant prognostic information, we repeated the clustering
213 with 400 FlowSOM clusters. When using all clusters, the classification results were
214 almost identical to the 50 cluster case (Figure 3D). We finally repeated the
215 classification using only the significant clusters (Figure 3E). This scenario reported
216 the highest performance, but still far from a significant enhancement compared to the
217 baseline classifier. We finally assessed the reliability of these results by performing
218 stability and overfitting checks (Figure S5).

219 **Relative marker expression is similar between relapse and non-relapse patients** 220 **across cell subpopulations**

221 Following the assessment of the prognostic significance of cell abundance, we turned
222 to marker expression within each cell subpopulation. The distributions depicted in
223 Figure 4A portray the aggregated marker expression for relapse and non-relapse
224 patients within each metacluster. The patient-specific distributions that contribute to
225 these aggregated distributions are shown in Figure S6. Most markers across the
226 majority of metaclusters did not exhibit noteworthy disparities between the relapse
227 and non-relapse groups. The exceptions are metacluster 4, which showed
228 underexpression of CD10 and overexpression of CD20 in relapse patients, as well as
229 more general differences in markers CD38, CD45 and CD58; and metacluster 6,
230 which displayed differences in CD10 and CD34. These metaclusters are associated
231 with minor subpopulations and part of the leukemic clone respectively. It remained to
232 be seen that the significance of these disparities were reproducible at an
233 individual-patient level, rather than being confined to the population level. Following
234 the rationale of the previous section, we aimed to test whether individual patients'
235 marker expression could predict relapse.

236 To address this, we summarized the marker expression distributions of each

237 patient within every metacluster using the median and the first four statistical
 238 moments: Mean, standard deviation, skewness and kurtosis (Statistical moments of
 239 order 1 to 4). This procedure produced five distinct datasets, each corresponding to a
 240 specific metric, where each row encapsulated a patient's marker distribution
 241 summary. Additionally, we constructed a combined dataset with all features to
 242 explore whether a combination of metrics would yield more informative results.
 243 Furthermore, we created a final dataset comprising exclusively those features
 244 displaying statistically significant differences, as done in the previous section
 245 (Kolmogorov Smirnov test, $\alpha = 0.05$). We used the classification routine to check the

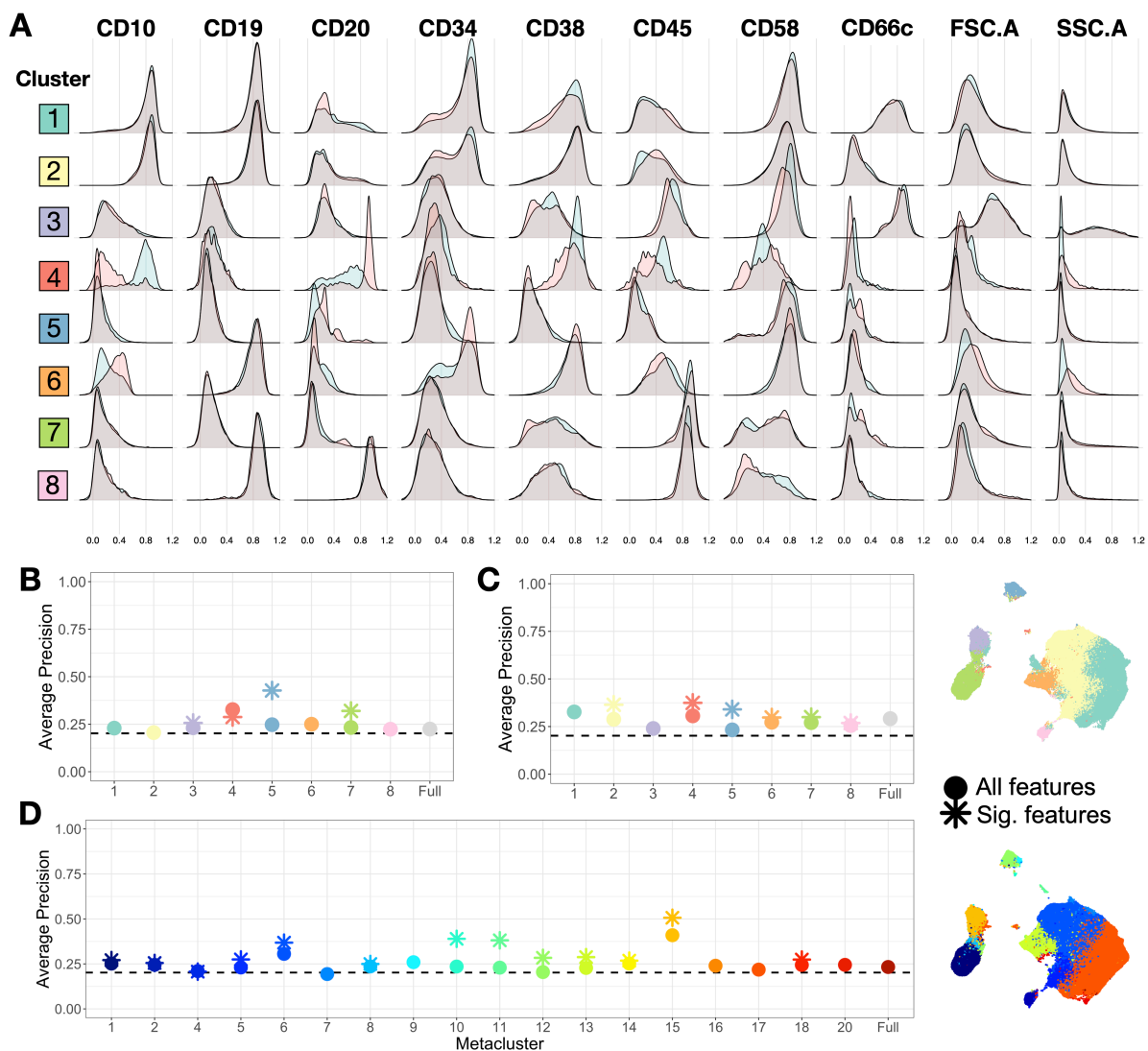


Figure 4. Expression-based classification. **A.** Aggregated marker expression of relapse and non-relapse patients per metacluster. **B.** Classification results in terms of AUCPR. Black dashed line represents baseline precision. Color denotes metacluster. Circles represents the average precision obtained when using all the distribution metrics together to train the classifier. Asterisk represents the same average precision when using only those features with significant differences according to a Kolmogorov-Smirnov statistical test ($\alpha = 0.05$). **C.** Classification results in terms of AUCPR for a subset of patients (N=158) with an increased number of markers. **D.** Classification results in terms of AUCPR for a higher resolution clustering (400 FlowSOM clusters, 20 metaclusters).

246 predictive power of each dataset. A summary of the workflow followed in this section
247 is shown in Figure S7. The results are shown in Figure 4B. For each metacluster, we
248 show the average precision (equivalent to AUCPR) obtained by using all the
249 information versus only the features with significant differences, as done in the
250 previous section with cell abundance. We also show the same information for the full
251 cohort, without segregating by metaclusters. The results for individual metrics
252 (median, mean, standard deviation, skewness and kurtosis) are shown in Figure S8.
253 The conclusion is straightforward: the information contained in marker expression
254 distribution lacks predictive capacity, given that the majority of AUCPRs marginally
255 exceeded the baseline precision. The best result was a precision of 42% when using
256 only the significant features in metacluster 5, which correspond to myeloid cells.
257 Notably, the leukemic clone metaclusters (1, 2 and 6) contained no prognostic
258 information.

259 We explored the possibility that the observed outcome could stem from an
260 insufficiency of detail in the information under examination for each patient. To
261 address this, we repeated the analysis incorporating two alterations. Firstly, we
262 expanded the set of markers selected for analysis. However, this came at a cost: the
263 patient count diminished from 188 to 158. Employing the same clusters identified in
264 the original analysis, we searched for differences within the new markers (IgM,
265 cyTDT, cyMPO, cyCD3, CD13, CD22, CD3, CD33), but the improvement in the
266 predictive power of the routine was negligible: we obtained an increment of 5% of
267 precision on average (Figure 4C). In subsequent investigation, we studied whether
268 the challenge laid not in marker quantity but rather in the size of the clusters. Using
269 the initial set of 8 markers, we reconsidered the 400-cluster outcome from the
270 previous section, which resulted in 20 metaclusters. Two of the metaclusters (3 and
271 19) lacked enough patients to reliably estimate performance. For the remaining
272 metaclusters, the improvement was also unremarkable, especially in clusters
273 associated with the leukemic clone (red and blue colors) (Figure 4D). The best result
274 was an average precision of 50%, slightly superior than the best precision in the
275 default analysis but in a different subpopulation. The reliability of this set of results
276 was also assessed as in the previous section by calculating the stability of the
277 classifier (Figure S8).

278 To conclude, we performed two additional analyses. We first considered whether
279 the preprocessing of the data could be responsible for the lack of predictive
280 information. To explore this, we replicated the analysis using the cyCombine
281 algorithm for file matching (see 'Methods'), and our findings concurred with the
282 conclusions detailed earlier (Figure S9). Lastly, we considered only those patients
283 which were initially diagnosed as intermediate risk, to check if the more intensive
284 treatment received by high risk patients could bias the results. This resulted in a
285 reduced cohort of 119 patients. The results were also similar to the above (Figure
286 S10). Hence, irrespective of treatment received, preprocessing technique employed,
287 number of markers considered, cluster size and distribution metric, marker
288 expression of FC data at diagnosis failed to predict relapse.

289 **Biomarker discovery algorithms from the literature support the findings of the** 290 **main analysis**

291 We contrasted our findings with other algorithms from the literature designed for
292 biomarker discovery and outcome prediction. A description of their functionality and
293 implementation can be found in the 'Methods' section. The results for each of them
294 are shown in Figure 5. The first example is Cydar²⁹, which is designed for differential
295 abundance discovery. The clusters (hyperspheres in Cydar terminology) with a
296 sufficient number of cells are projected onto the UMAP embedding employed in the
297 previous sections (Figure 2). Those hyperspheres with significant differences in
298 abundance (according to a lasso-regularized logistic regression) are plotted with
299 wider radius and colored according to the fold change in abundance between both
300 group of patients (Figure 5A). To check the predictive power of such hyperspheres,
301 we extracted the number of cells per patient and hypersphere and ran the
302 classification routine previously described, with results similar to the best models in
303 the previous section (Figure 5B). The difference here is that due to the lower size of
304 the clusters (hyperspheres), there are less patients per cluster (Figure 5C), which
305 makes the results less generalizable. The second example is Citrus³⁰. The results for
306 both abundance and median expression (Figure 5D) indicate the lack of predictive
307 information, regardless of regularization threshold. In both cases the null classifier
308 (no features, leftmost regularization threshold) was the best classifier, with an error of
309 20.2%. This number is the proportion of relapse patients in our dataset, which means
310 the algorithm was classifying all patients as non-relapse. Further, the False Discovery
311 Rate shows all the characteristics of a classifier unable to discriminate³¹. The Citrus
312 algorithm also reports the clusters with potential predictive capacity (Figure S11A-B).
313 The third example is cellCNN³², which uses a convolutional neural network. We
314 complemented it with a nested loop that allowed us to provide two conclusions: First,
315 the lack of an inner validation routine makes the algorithm more prone to overfitting, as
316 we see in the comparison between the accuracies of the inner and outer loops
317 (Figure 5E). Second, the performance in terms of AUCPR did not improve previous
318 tests (Figure 5F). This algorithm also reports the characteristics of the most
319 significant cells, which are included in Figure S11C-D. Finally, we tested Diffcyt²⁶ on
320 the metaclusters that were already obtained by FlowSOM (Figure 2). This algorithm
321 showed no significant differences in cell abundance per metacluster (Figure 5G) but it
322 did detect significant differences in expression (Figure 5H). On closer inspection, we
323 noticed that those significant features were the ones that displayed differences in
324 aggregated marker expression (Figure 4A). We already showed how this sum of
325 distributions does not necessarily entail that individual patients follow the same trend
326 (see Figure S7) and that a classifier could still be unable to properly predict relapse,
327 as shown in Figures 4B-C.

328 The conclusion of this section is that other algorithms that aim for the same goal as
329 this study and follow a comparable methodology are also unable to detect differences
330 between relapse and non-relapse patients. This applies to analyses centered on both
331 cell abundance and marker expression.

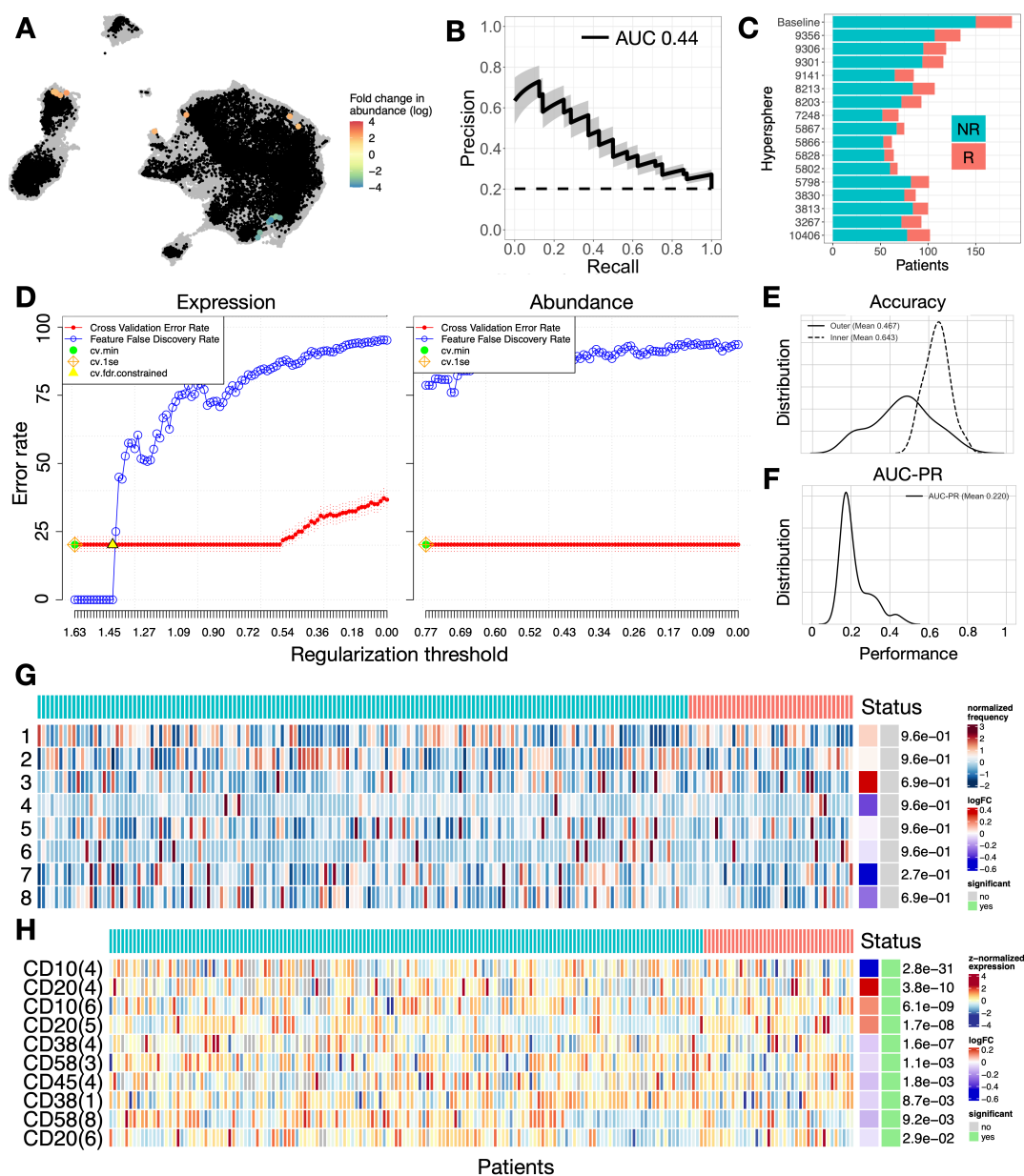


Figure 5. Results from other biomarker discovery algorithms. **A.** Cydar hyperspheres (black) projected on UMAP embedding from Figure 2C (gray). Significant hyperspheres are colored according to fold change in abundance. **B.** Classification results from the cell abundance of the significant hyperspheres. Interpretation is as in Figure 3B-E. **C.** Number of patients in significant cydar hyperspheres split in relapse (R) and non-relapse (NR). Top row displays the reference of 188 patients (38 relapses). **D.** Citrus results for median expression (left) and abundance (right). Represented are cross-validation error rate (Red) and false discovery rate (blue). Green dot represents the error rate of the best model according to the minimum cross-validation error rate. Orange rhomboid represents the error rate of the best model according to the one standard deviation criterion. Yellow triangle represents the best model according to the lowest compatible false discovery rate. **E.** Comparison between the accuracy in the outer and inner loops of the CellCNN algorithm. **F.** AUCPR curve in the outer loop of the CellCNN algorithm. **G.** Diffcyt differential abundance test. Each row contains the individual patient percentage in a metacluster (1 to 8). The algorithm includes the fold change between status (relapse R in red vs non-relapse NR in blue) and the statistical significance of the results (gray vs green) **H.** Diffcyt differential expression test. Row annotation includes the marker and the metacluster in which significant differences were found.

332 DISCUSSION

333 Approximately 15% of children diagnosed with BCP-ALL will suffer relapse or
334 refractory disease, and the prognosis for this subgroup is significantly worsened.
335 Despite advancements in therapy through refined chemotherapy regimens, the
336 potential for further therapeutic success appears rooted in alternative treatments or
337 more precise risk assessment upon diagnosis. This underscores the importance of
338 enhancing our capability to anticipate disease progression at the individual patient
339 level. In this investigation, we have compiled an extensive FC database for childhood
340 BCP-ALL. A total of 252 patients from three hospitals participated in the study, with
341 188 patients advancing to the computational analysis phase. The objective of the
342 study was to examine whether patients experiencing relapse exhibit distinctive
343 patterns within their FC data at diagnosis. In other words, the goal was to test if FC
344 data at diagnosis has prognostic value with regards to long-term response.

345 To fulfill this objective, we preprocessed and normalized the data and we carried
346 out a file merging step in order to integrate the different aliquots of each patient into a
347 single file, after comparing the performance of different imputation methods. We
348 concluded that direct nearest neighbor imputation was the most
349 distribution-preserving algorithm. We hypothesize, however, that this may be only
350 applicable to the kind of data considered in this study (in terms of markers included
351 and type of distributions). This is clearer after noting the differences with the
352 conclusions reached in a recent review on imputation methods²¹. Without being
353 exhaustive, the presence of a dense and homogeneous clone could make the data
354 more suitable for merging algorithms of one kind, whereas more balanced or
355 heterogeneous bone marrow distributions would benefit from other algorithms. The
356 preprocessing step, the normalization, and the previous clustering step can also
357 impact the values and range of the metrics employed to measure distribution
358 differences. We therefore recommend repeating this assessment when dealing with a
359 different disease or high-dimensional data of other kind.

360 The selected patients were then pooled together and clustered with FlowSOM. We
361 visually examined the data structure through its UMAP embedding, revealing minimal
362 disparities between relapse and non-relapse patients. We extracted cell abundance
363 per patient at the cluster level and summarized marker expression at the metacluster
364 level by means of the first four statistical moments of the expression distribution: Mean,
365 standard deviation, skewness, and kurtosis. We also computed the median of the
366 distribution, a classical FC metric. All these features were input into a nested cross-
367 validation scheme, which aimed to identify the optimal classifier for each dataset and
368 assess its performance on unseen data. The performance of such classifiers served
369 as an indicator of the prognostic value of the dataset.

370 The outcome of the primary analysis directly contradicts the initial hypothesis: FC
371 data obtained at diagnosis does not appear to harbor information relevant to the
372 prediction of relapse. Cell abundance per cluster is unable to predict relapse, even
373 when increasing the number of clusters and when using only the ones with significant

374 differences between relapse and non-relapse groups. Likewise, no distribution metric
375 is able to significantly improve the baseline precision. Considering all metrics together
376 in a single dataset or retaining only the ones with significant differences also failed to
377 improve outcomes. We further increased the number of clusters and the number of
378 markers, the latter with a reduction in the number of patients from 188 to 158, and we
379 also repeated the analysis considering a different file merging algorithm, to test the
380 possibility that the preprocessing routine masked differences in abundance or
381 expression. Finally, we restricted the analysis to intermediate risk patients, to account
382 for the possible confounding effect of the more intensive treatment received by high
383 risk patients. The conclusion remained unaltered across all these studies. The most
384 precise classifier was found when increasing the number of clusters and using only
385 the metrics with significant differences between groups. This classifier achieved an
386 average precision of 0.507. This indicates that, within this particular classifier, the
387 likelihood of a predicted relapse corresponding to an actual relapse stands at 50.7%.

388 The pipeline followed in this study was designed to encompass and extend
389 previously published algorithms by offering a more comprehensive characterization of
390 marker expression distributions and employing non-linear classifiers with a more
391 rigorous resampling scheme. Despite these advancements, we verified the outcomes
392 against other open-source algorithms. We specifically assessed Cydar²⁹, Citrus³⁰,
393 Diffcyt²⁶, and CellCNN³², which are among the most frequently referenced algorithms
394 for discovery analysis in FC. Cydar, Citrus, and Diffcyt incorporate tests for differential
395 abundance. Cydar identified several clusters exhibiting significant differences in
396 abundance, with a performance akin to the classifiers obtained in the primary
397 analysis. As a drawback, those clusters only contained a subset of the full cohort of
398 patients. Citrus and Diffcyt failed to identify differences bearing prognostic value.
399 These two algorithms additionally include tests for differential expression. Citrus
400 identified three features, but the classifier's performance proved inferior to the null
401 model. In the case of Diffcyt, the identified features held significance at a population
402 level but struggled to consistently discern individual patients. Finally, the outcomes
403 from cellCNN mirrored those of the other classifiers, with performance marginally
404 surpassing the baseline classifier. The aforementioned findings further underscore
405 the established conclusion that the metrics used to characterize the distributions of
406 surface markers fail to differentiate between patients who experience relapse and
407 those who do not.

408 The initial hypothesis of this study rested on the premise that the leukemic clone in
409 relapsing patients differs from that of successfully treated individuals, and that such
410 distinctions manifest in the immunophenotype and could then be captured through FC
411 measurements. The negative outcome we have obtained in this study offers room for
412 diverse interpretations. It is possible that the immunophenotype of relapsing patients
413 does not exhibit distinctive characteristics. While genetic differences are known to
414 play a fundamental role in the origin and potentially the relapse of leukemia^{33,34}, these
415 differences may not necessarily translate to variations in marker expression
416 distributions. Rather, they may only be found through genomics, transcriptomics or

417 metabolomics. In this line, recent research has demonstrated the feasibility of
418 predicting relapse in infants with MLL-rearranged ALL by single-cell transcriptomics³⁵.
419 It remains essential to conduct further investigations to ascertain the predictive
420 potential of a comprehensive panel of mutations for the broader population.
421 Alternatively, immunophenotypic disparities might emerge post-therapy. Such a
422 scenario could be attributed to chemotherapy-induced bottleneck selection, which has
423 been shown to impact the phenotype more significantly than genotype³⁶. This could
424 be probed by revisiting this study with FC data from a later time point, although this
425 approach would deviate from the initial goal of refining risk stratification at diagnosis.

426 With respect to the conditions of this study, it is also feasible that
427 immunophenotypic distinctions exist but are only discernible within small cell
428 subpopulations. Such differences might elude detection even with high-resolution
429 clustering if the number of cells per patient is not increased. This hypothesis could be
430 explored by imposing stricter limitations on the number of cells per patient, although
431 this would inevitably reduce the total number of patients in the study. Another
432 potential consideration is that immunophenotypic disparities manifest in markers
433 beyond the ones routinely assessed in clinical practice. Evaluating this notion would
434 require prospective studies. Finally, it can be the case that immunophenotypic
435 disparities exist but are obscured by the extensive preprocessing and normalization
436 required to integrate data from multiple centers. No immediate alternative exists until
437 the clinical adoption of next-generation cytometers that can measure a larger number
438 of markers simultaneously and are more amenable to standardization.

439 Despite the scope and scale of this study, as well as the evidence gathered in
440 support of the negative conclusion, there are still alternative ways of exploring the
441 potential prognostic value of FC, a line of research that is still relatively unexplored for
442 this particular disease. Indeed, a number of works employ machine learning
443 techniques to answer questions relative to BCP-ALL, but applications for relapse
444 prediction from FC data at diagnosis are still uncommon. For instance, Pan et al.³⁷
445 utilized clinical data from a cohort of 336 patients to predict relapse. However, this
446 study lacked FC data and incorporated response variables (such as MRD at days 15
447 and 33), thereby limiting its applicability to the diagnosis phase. A similar predictive
448 framework based on clinical features was presented by Mahmood et al.³⁸. Moving
449 closer to the objectives of the present study, Good et al.¹⁵ gathered mass cytometry
450 data at diagnosis to achieve a relapse prediction AUC of 0.85 using an elastic net
451 model. However, their database only encompassed 54 patients, and the validation
452 was confined to a single train-validation split, thereby hampering direct comparability
453 with our results. Similar constraints apply to an earlier work by our own group that
454 included 56 patients to identify differences in expression¹⁶. Finally, we recently
455 published a framework that uses topological data analysis for feature extraction and
456 includes a classifier that reached high accuracy and AUC with an increased number
457 of patients (N = 96)¹⁷. This study meets the criterion of moving beyond the
458 conventional feature engineering in FC and the preliminary results encourage the
459 search for differences in immunophenotype of relapsing patients by means of more

460 complex methods.

461 To sum up, we have performed a machine learning-based relapse classification
462 study involving 252 patients diagnosed with childhood BCP-ALL. A detailed
463 characterization of immunophenotype and different cluster resolutions have been
464 unable to distinguish relapse from non-relapse patients, and other algorithms from the
465 literature exhibited similar outcomes. We conclude that different characterizations of
466 FC data are required to uncover its potential prognostic value, pending the availability
467 of high-dimensional omics data at diagnosis and more advanced cytometers that
468 circumvent some of the challenges found throughout our study.

469 **METHODS**

470 **Study population**

471 252 patients and three different spanish hospitals participated in this study. We
472 collected data from 116 patients from Hospital Niño Jesús, Madrid (HNJ), diagnosed
473 between January 2013 and January 2022; 80 patients from Hospital Virgen de la
474 Arrixaca, Murcia (HVA), diagnosed between May 2011 and July 2022; and 56 patients
475 from Hospital Virgen del Rocío, Sevilla (HVR), diagnosed between January 2012 and
476 July 2021. 207 patients had long-term remission and 44 patients relapsed. All
477 patients are in the age range 0-19. We dropped those which continued treatment at
478 another institution or that had not reached 1 year of follow up, with 211 patients finally
479 proceeding to the main analysis (Figure S1). The data collected included FC files
480 from bone marrow samples at diagnosis and additional clinical information: Age, sex,
481 phenotype, risk group, CNS involvement, absolute lymphocyte count (ALC),
482 immunophenotype and genetic information (karyotype and chromosomal
483 translocations). Informed consent was obtained from the parents or legal guardians
484 according to the Helsinki Declaration.

485 **Treatment**

486 Treatment was administered according to the Spanish National protocols
487 SEHOP-PETHEMA 2013 and INTERFANT-06 in patients under 1 year old. Older
488 patients from HVR and HVA followed the previous consecutive versions of this
489 protocol (LAL/SEHOP 01 for low risk patients, LAL/SEHOP 96 for intermediate risk
490 patients and LAL/SHOP 05 for high risk patients). These protocols are based on the
491 Berlin–Frankfurt–Munster (BFM) backbone and consists of a four-drug induction
492 phase (IA), followed by induction IB, consolidation, reinduction, and maintenance.
493 High risk patients receive three specific high-risk blocks, three reinduction cycles, and
494 maintenance. The total duration of therapy is 2 years.

495 **Risk stratification**

496 Risk stratification criteria is based on age, lymphocyte count at diagnosis,
497 extramedullary infiltration, cytogenetics and early response to treatment.

498 SEHOP-PETHEMA 2013 assigns a low risk to patients who meet the following
499 criteria: Age between 1 and 10 years, ALC less than $20 \cdot 10^9$ cells/liter at diagnosis,
500 absence of CNS or testicular infiltration, high hyperdiploidy or presence of t(12;21),
501 absence of t(1;19), no MLL rearrangement, good early response and good response
502 to prednisone. High risk patients verify at least one of the following: presence of
503 t(4;11), hypodiploidy, BCR-ABL rearrangement or poor early and prednisone
504 response. Patients who do not meet either criteria are assigned to intermediate risk³⁹.

505 **Patient outcome**

506 Patients are assigned to either relapse or non-relapse group. Bone marrow relapse is
507 diagnosed with the same criteria as the initial diagnosis: presence of >25% of leukemic
508 blasts in bone marrow. Extramedullary relapses require a biopsy of the tissue or a
509 sample of cerebrospinal fluid for confirmation. For a patient to be included in the non-
510 relapse group we require at least one year of disease-free survival after treatment.

511 **Flow cytometry data**

512 All data is retrospective. Bone marrow samples have been handled following
513 standard clinical procedures (there is no specific design for this study). Monoclonal
514 fluorochrome-conjugated antibody combinations employed at each hospital are
515 shown in Tables S3-S5. Some patients presented variations from this standard
516 (marker changes, additions or omissions).

517 **Preprocessing of flow cytometry data**

518 Preprocessing encompassed a manual and a computational step. The manual step
519 consisted in checking each aliquot for acquisition errors and removing doublets and
520 debris (Fig. S2A). At this step we required that all aliquots contain CD19 and CD45
521 markers. For this reason, certain patients (mostly those diagnosed at earlier dates)
522 were excluded from the study (1 from HVA and 7 from HVR). Aliquots with too little
523 cells or with strong batch effects were also removed.

524 The compensated files were subsequently exported to undergo the computational
525 preprocessing step⁴⁰. This preprocessing involved transforming data with the
526 standard Logicle transform, removing margin events (this is done more efficiently
527 here than manually) and renaming the channels to uniformize marker names across
528 patients. Finally, each marker was normalized to the [0,1] interval by means of a
529 modified max-min transformation: Instead of taking the maximum and minimum
530 values, we took the 99th and 1st quantile respectively, making the normalization more
531 robust to outliers. This transformation implies that we are comparing relative
532 expression of a marker instead of the absolute expression.

533 Finally, we had to consider the issue of backbone markers displaying inter-aliquot
534 differences. Some causes of this variability are staining problems, acquisition errors
535 and other batch effects. To account for this source of heterogeneity we first sampled
536 10000 cells from each tube and then performed quantile normalization, a technique

537 already used in RNA-seq data to make distributions more similar. Instead of
538 normalizing the whole distribution we followed the approach in the cytoNorm
539 algorithm⁴¹: we performed flowSOM clustering with 5 clusters and then normalized on
540 a per cluster basis (Figure S2B).

541 **File merging**

542 File merging (also file matching, panel merging or imputation) refers to the process of
543 combining all the information from a FC experiment into a single file. The issue arises
544 from the fact that flow cytometers can measure a limited number of colors, i.e. the
545 expression of a limited number of protein cell markers. To obtain information for more
546 markers, the sample is divided in several tubes or aliquots and each tube measures a
547 different set of proteins, while maintaining a subset of them constant (backbone
548 markers). This is enough for manual inspection of the sample but for data analysis
549 the combined file allows for a much deeper analysis. Figure S2C illustrates the
550 starting point and endpoint of this part of the analysis.

551 Several methods have already been developed for this purpose. Most of them rely
552 on nearest neighbor imputation: Backbone markers are used to find the closest
553 neighbors (cells with the highest surface protein similarity), and the missing
554 information is copied from the respective neighbor. This was first published by
555 Pedreira et. al.²². Later works use slightly modified versions that aim to correct
556 artifacts and biases: cytoBackBone²³ includes the concept of acceptable and
557 non-ambiguous nearest neighbors (data is only imputed if a cell's closest neighbor is
558 also the other cell's closest neighbor) and CYTOFmerge²⁴ used median expression
559 from the closest 50 neighbors instead of the single closest one. A more recent
560 method (cyCombine)²⁵ follows a different methodology: It finds clusters in the space
561 of backbone markers and then approximates the distribution of the remaining markers
562 using kernel density estimation. The missing information is then imputed using
563 probability draws. This is similar to other approach by Lee et. al.⁴², which requires
564 domain knowledge but demonstrated that pre-matching clustering enhances
565 performance and reduces the risk of spurious cell populations appearing in the data.
566 These previous steps improve quality of merging in terms of preserving the original
567 distribution at the expense of removing cells that are too exclusive of one file and that
568 would otherwise impute noise.

569 In light of these advances, the question arises as to which one is the most suitable
570 method for conducting downstream analysis on a patient dataset. A recent
571 comprehensive review delved into this question²¹, using an array of metrics to
572 compare the performance of the different algorithms. They concluded that there is not
573 a clear winner and caution needs to be taken when performing downstream analysis
574 with imputed data. A similar approach was carried out by Perderson et. al.²⁵ when
575 demonstrating the cyCombine functionality. The Earth's Mover Distance (EMD) was
576 employed to compare the distribution of a marker in the original tube versus the
577 merged file. This distance, also known as Wasserstein distance, measures the
578 minimum cost required to transform one distribution into another. In the context of

579 flow cytometry, this cost is associated with moving cells from one marker expression
580 state to another. Lower EMD values indicate a closer match between the original and
581 imputed distributions, suggesting a more accurate imputation process. Its suitability
582 for comparing marker expression distributions in the context of flow cytometry was
583 recently demonstrated²⁰.

584 Here, we preprocessed patients from each hospital as described above and
585 imputed the missing values according to the four methods mentioned in the main text:
586 Direct nearest-neighbor imputation (basic), CYTOFmerge, cytoBackBone and
587 cyCombine. For the backbone markers (CD19, CD34 and CD45), since these
588 markers are present in all aliquots, we measured the difference of expression in each
589 aliquot with the expression in the merged file and computed the average to get an
590 upper bound for acceptable inter-aliquot differences. For the remaining markers we
591 computed the EMD between the expression in the merged file and the expression in
592 the specific aliquot in which they were present. Other metrics that were used to
593 assess the performance of the different algorithms were the ratio between cells to
594 merge and final number of cells (some of the algorithms discard cells) and the
595 computation time.

596 **Patient selection**

597 The selection of patients and markers that proceeded to the final study was
598 conducted post-normalization and merging. This is due to the fact that certain
599 aliquots were excluded during these steps, resulting in a variation in the markers
600 available for each patient compared to the preprocessing phase. We first reduced
601 each patient (i.e. each merged file) to 10000 cells, removing patients that did not
602 reach this amount. There exists a tradeoff between the number of markers analyzed
603 and the number of patients. For the main analysis, 10 markers were retained (FSC.A,
604 SSC.A, CD19, CD10, CD20, CD34, CD66, CD58, CD45, CD38) for a total of 188
605 patients (95 from HNJ, 46 from HVR and 47 from HVA).

606 **Flow cytometry visualization**

607 FlowSOM was run with parameters $x = 5$, $y = 10$ and $\max K = 20$. We consistently
608 obtained an optimal number of 8 metaclusters. For UMAP, we subset 1000 cells from
609 each patient and pool the subset files to obtain the embedding of the bone marrow of
610 all patients. After a visual exploration, we selected UMAP hyperparameters $\min_dist =$
611 0.1 , $n_neighbors = 50$ and the rest with default values (Figure S12).

612 **Feature extraction**

613 The most common features for analyzing flow and mass cytometry data are
614 abundance (relative or absolute) and expression, measured as the median intensity
615 of a marker (MFI), in general or on a per-cluster basis. This has been the case in
616 most of the studies and methods used for biomarker discovery in FC data applied to
617 leukemia (Table S5). However, a single number might not be enough to characterize

618 the full marker distribution and thus to discover differences in expression, intensity
619 and immunophenotype. Here, we computed for each cluster not only the abundance
620 and median expression but also the first four moments of the distribution (mean,
621 standard deviation, skewedness, and kurtosis). We created a dataset for each
622 feature and a dataset with all features together, in order to find which characterization
623 is best for detecting differences in expression and to see if the combination of all
624 enhances the predictive capacity. We finally created a dataset with only those
625 features that present significant differences between relapse and non-relapse
626 patients according to a two-tailed Kolmogorov-Smirnov test.

627 **Classification**

628 Most of the published methods for analyzing FC data (Table S5) use linear models to
629 perform moderated tests in order to find significant differences in expression (median
630 intensity). The exception are neural network based algorithms, which do not explicitly
631 perform feature selection but include the FC file as input for the algorithm. The
632 differential expression methodology is standard in transcriptomics analysis, when
633 looking for genes that are overexpressed under given conditions⁴³. For the problem
634 and the hypothesis of this study, finding a significantly over- or under-expressed
635 marker might not be enough to distinguish a relapse from a non-relapse patient. In
636 other words, while we would be able to make a statement of the kind “relapse patients
637 on average have a higher expression of marker X”, we would not be able to say
638 whether a new patient belongs in the relapse or non-relapse group. Further, these
639 analyses consider markers individually, but it could be the case that, while there
640 might not be significant differences in MFI of a marker, we could find a region in the
641 space of MFIs that separates both groups of patients.

642 Without any previous knowledge about the characteristics of this region and given
643 that it can be quite different depending on which metric we are considering, we could
644 not say a priori which classification model was best for this task, nor which
645 hyperparameters of such model were optimal. For this reason, the classification
646 routine had to include some form of internal validation to make this decision based on
647 the data. We did this by means of nested cross-validation^{44,45}. This approach
648 consists of two cross-validation loops, an outer loop and an inner loop. The inner loop
649 is used to find the best model and its hyperparameters, and the outer loop is used to
650 get an estimate of performance in unseen data. For the inner loop we performed
651 9-fold cross-validation repeated 20 times to get a more robust estimate, and for the
652 outer loop we performed 5-fold cross-validation, repeated 10 times. This resampling
653 scheme implied that each inner fold contained 16 patients on average, with 2 of them
654 belonging to the relapse group.

655 We chose 4 models that are widely used and ensure that different types of
656 boundaries are explored: K-Nearest Neighbors, Naïve Bayes Classifier, Random
657 Forest, and Linear Support Vector Machine. Each time we trained a model we use
658 random grid search to select the optimal hyperparameters (Table S6). The best
659 model was selected based on the one standard deviation rule using the AUCPR

660 curve, which is more suitable for problems with unbalanced data⁴⁶. Hyperparameter
661 estimation and model selection were thus performed together⁴⁷.

662 For every dataset, the nested cross-validation routine produces 50 performance
663 estimates (AUC-PR) and identifies 50 ‘best models’ (obtained from the 10 repetitions
664 of 5-fold cross-validation in the outer loop). We summarized the 50 AUC-PR values by
665 calculating their average, and the 50 best models by using a measure of heterogeneity
666 as a surrogate of the stability of the routine. This stability measure is assigned a value of
667 1 if the same model is consistently selected in all outer folds, and 0 if the four models are
668 equally frequent. It is important to note that while this measure can indicate instability
669 or unsuccessful optimization, it is possible for two models to perform nearly equally
670 well in identifying the best boundary, making them equally suitable for the task at hand.
671 Thus, it’s essential to consider the degree by which the top model has been selected
672 and its associated level of performance.

673 To sum up, for each dataset we had a measure of the predictive information it
674 contains (average AUCPR) and a proxy of the reliability of this measure (stability
675 index). These two metrics were employed in conjunction to assess the predictive
676 information across different metrics and metaclusters. Figure S7 provides an
677 overview of the feature extraction and classification steps.

678 **Comparison with other algorithms**

679 We already mentioned the existence of other algorithms and studies that aim to
680 predict a clinical outcome from flow cytometry data (table S5). The way they are
681 designed follows a similar pattern: All of them begin from a set of flow cytometry files
682 (one per patient) and cells are clustered with a different algorithm depending on the
683 method. Each cluster is summarized by means of the abundance and the median
684 fluorescence intensity of a marker, and these are in turn used for classification.
685 Generalized linear models are the usual choice, as many algorithms are inspired by
686 RNA or DNA microarray data analysis. The exception to this two-step process are
687 neural networks based algorithms, since feature extraction is performed in the inner
688 layers of the network. The pipeline that we followed here aimed to generalize this
689 ‘classical’ approach by going beyond the typical characterization of a marker
690 distribution (MFI) and by including a broader and more thorough classification routine.
691 To validate the conclusions of this study, we selected four of the most cited algorithms
692 and compared the results. Below we summarize the characteristics and functionality
693 of the selected algorithms.

- 694 • Cydar²⁹ identifies differentially abundant cell populations between groups. It was
695 originally proposed for mass cytometry data but can be extended to any
696 multidimensional dataset. It clusters cells into hyperspheres, extracts cell
697 abundance and tests for significant differences by means of a negative binomial
698 generalized linear model, controlling for the spatial false discovery rate. In this
699 study we subsampled 1000 cells from each patient, clustered with scaling factor
700 0.2, removed hyperspheres with average counts below 5 and applied the QL
701 framework to test for significant differences. After correcting for multiple testing

702 (spatial FDR<0.05), relevant hyperspheres and the respective fold changes in
703 abundance were visualized on the UMAP embedding of the dataset.

- 704 • Citrus³⁰ identifies cell subpopulations associated with a clinical or experimental
705 outcome. It clusters cells in a hierarchical manner, extracts either abundance or
706 median expression and uses regularized supervised learning algorithms to identify
707 clusters of interest. For this method we also subsampled 1000 cells from each
708 patient. We clustered with a minimum cluster size of 5% and 5 folds and tested
709 with the nearest shrunken centroids algorithm (PAMR).
- 710 • CellCNN³² uses a convolutional neural network to detect rare cell subsets
711 associated with disease. As explained above, it bypasses an explicit feature
712 extraction process to go directly from the multicell inputs to the model prediction,
713 drawing inspiration from multiple instance learning. We ran the convolutional
714 neural network with 1000 cells, 1000 subsets, quantile normalization and scaling
715 already performed and the rest of parameters with the default values. The
716 default function performs hyperparameter tuning via a single train-test split. We
717 further included an outer loop (20 repeats of 5-fold cross-validation) to obtain an
718 unbiased estimate of performance, since a single train-test split would make the
719 estimation more prone to bias.
- 720 • Diffcyt²⁶ employs a combination of high-resolution clustering and empirical
721 Bayes moderated tests adapted from transcriptomics to perform differential
722 discovery analyses. It is specifically intended for complex and/or flexible
723 experimental designs. Like Citrus, each cluster is characterized by abundance
724 and median marker expression and these are modelled by statistical methods
725 based on the negative binomial distribution (Bayes estimation and generalized
726 linear models among others). We followed a previously published workflow to
727 run this framework⁴⁸. We reused the FlowSOM clustering obtained in the
728 visualization step of the study and used the edgeR method for differential
729 abundance testing and the limma method for differential expression testing.

730 **Software**

731 Manual preprocessing step was performed by means of FlowJo™ v10.9 Software
732 (BD Life Sciences). The computational step was carried out in RStudio
733 (v2023.06.1+524, Posit team 2023) with the R Statistical Software (v4.2.2, R Core
734 Team 2022), using packages flowCore (v2.12.2, available at Bioconductor) and
735 flowWorkspace (v4.12.1, available at Bioconductor). File matching was also
736 performed in R adapting the code from packages cytoBackBone
737 (<https://github.com/tchitchek-lab/CytoBackBone>), cyCombine (v0.2.15, available at
738 <https://github.com/biosurf/cyCombine>) and CYTOFmerge
739 (<https://github.com/tabdelaal/CyTOFmerge>). Visualization made use of packages
740 FlowSOM (v2.8.0, Bioconductor) and uwot (v0.1.16, available at CRAN).
741 Classification was performed with caret (v6.0-94, CRAN) and rsample (v1.1.1, CRAN)
742 packages. For the other algorithms of the literature, packages Cydar (v1.24.0,

743 Bioconductor), Citrus (v0.0.8, available at <https://github.com/nolanlab/citrus>) and
744 Diffcyt (v1.20.0, Bioconductor) were run in R and cellCNN
745 (<https://github.com/eiriniar/CellCnn>) was run in Python v2.7 (Python Software
746 Foundation <https://www.python.org/>), all of them making use of the open source code
747 provided at their respective websites.

748 **Hardware**

749 The computational preprocessing, file merging, visualization and feature extraction
750 routines were performed on a 3,4 GHz, 4-core, 16 GB memory iMac machine. The
751 classification routine was run on a 3,2 GHz, 16-core, 96 GB memory Mac Pro
752 machine. Runtime per dataset was 8-9 minutes (running each outer fold in a 31-core
753 parallel cluster).

754 **Data and code availability**

755 The source code and functions used in this article can be consulted at [https://github.c
756 om/Almr95/Relapse-Prediction](https://github.com/Almr95/Relapse-Prediction). This repository also includes the preprocessed and
757 merged files of the 188 patients selected for the main analysis. The full database of
758 anonymized FC files is available at <http://flowrepository.org/id/FR-FCM-Z7A2>.

759 **SUPPLEMENTAL INFORMATION**

760 Supplemental information can be found online at XXXX.

761 **ACKNOWLEDGMENTS**

762 This work was partially supported by project PDC2022-133520-I00 funded by
763 Ministerio de Ciencia e Innovación/ Agencia Estatal de investigación
764 (doi:10.13039/501100011033) and European Union NextGenerationEU/PRTR; by
765 project PID2022-140451OA-I00 funded by Ministerio de Ciencia e
766 Innovación/Agencia Estatal de investigación (doi:10.13039/501100011033) and
767 ERDF A way of making Europe; and by University of Castilla-La Mancha / ERDF, A
768 way of making Europe (Applied Research Projects) under grant 2022-GRIN-34405.
769 The support of Fundación Española para la Ciencia y la Tecnología (FECYT project
770 PR214), Asociación Pablo Ugarte (APU, Spain) and Junta de Andalucía (Spain)
771 group FQM-201 is also acknowledged. This work was also subsidized in its early
772 stages by a grant for the research and biomedical innovation in the health sciences
773 within the framework of the Integrated Territorial Initiative (ITI) for the province of
774 Cadiz (grant number ITI-0038-2019).

775 AUTHOR CONTRIBUTIONS

776 Conceptualization, V.M.P.G., M.R., and C.B.G.; Data curation, Á.M.R., R.P.G., A.N.L.,
777 S.C., J.F.R.G., E.G.V., T.C.V., Á.M.Q., A.C.R., M.R.O., M.V.M.S., A.M.P., J.L.F.S. and
778 C.B.G.; Formal analysis, Á.M.R.; Funding acquisition, M.R. and V.M.P.G.;
779 Investigation, Á.M.R., R.P.G., A.N.L. and S.C.; Methodology, Á.M.R.; Project
780 administration, C.B.G., V.M.P.G. and M.R.; Resources, T.C.V., Á.M.Q., A.C.R.,
781 M.R.O., M.V.M.S., A.M.P., J.L.F.S. and C.B.G.; Software, Á.M.R.; Supervision,
782 V.M.P.G. and M.R.; Writing—original draft, Á.M.R.; Writing—review & editing, Á.M.R.,
783 R.P.G., A.N.L., S.C., J.F.R.G., E.G.V., T.C.V., Á.M.Q., A.C.R., M.R.O., M.V.M.S.,
784 A.M.P., J.L.F.S., C.B.G., V.M.P.G. and M.R. All authors have read and agreed to the
785 published version of the manuscript.

786 DECLARATION OF INTERESTS

787 The authors declare no conflicts of interest.

788 GENERATIVE AI USAGE

789 During the preparation of this work, the authors used chatGPT (powered by OpenAI's
790 language model, GPT-3.5; <http://openai.com>) in order to improve readability and
791 language of the work. After using this tool, the authors reviewed and edited the
792 content as needed and take full responsibility for the content of the published article.

793 References

- 794 1. Pui, C.-H., Yang, J. J., Hunger, S. P., Pieters, R., Schrappe, M., Biondi, A., Vora, A., Baruchel, A.,
795 Silverman, L. B., Schmiegelow, K., et al. (2015). Childhood acute lymphoblastic leukemia: Progress
796 through collaboration. *Journal of Clinical Oncology* 33, 2938. [https://doi.org/10.1200/jco.2014.59.](https://doi.org/10.1200/jco.2014.59.1636)
797 [1636](https://doi.org/10.1200/jco.2014.59.1636).
- 798 2. Ceppi, F., Cazzaniga, G., Colombini, A., Biondi, A., and Conter, V. (2015). Risk factors for relapse in
799 childhood acute lymphoblastic leukemia: prediction and prevention. *Expert Review of Hematology*
800 8, 57–70. <https://doi.org/10.1586/17474086.2015.978281>.
- 801 3. Schultz, K. R., Pullen, D. J., Sather, H. N., Shuster, J. J., Devidas, M., Borowitz, M. J., Carroll, A. J.,
802 Heerema, N. A., Rubnitz, J. E., Loh, M. L., et al. (2007). Risk-and response-based classification of
803 childhood B-precursor acute lymphoblastic leukemia: A combined analysis of prognostic markers
804 from the Pediatric Oncology Group (POG) and Children's Cancer Group (CCG). *Blood* 109, 926–
805 935. <https://doi.org/10.1182/blood-2006-01-024729>.
- 806 4. Talleur, A. C., Pui, C.-H., and Karol, S. E. (2023). What Is Next in Pediatric B-Cell Precursor Acute
807 Lymphoblastic Leukemia. *Lymphatics* 1, 34–44. <https://doi.org/10.3390/lymphatics1010005>.
- 808 5. Teachey, D. T. and Hunger, S. P. (2013). Predicting relapse risk in childhood acute lymphoblastic
809 leukaemia. *British Journal of Haematology* 162, 606–620. <https://doi.org/10.1111/bjh.12442>.

- 810 6. Basso, G., Veltroni, M., Valsecchi, M. G., Dworzak, M. N., Ratei, R., Silvestri, D., Benetello, A.,
811 Buldini, B., Maglia, O., Maserà, G., et al. (2009). Risk of relapse of childhood acute lymphoblastic
812 leukemia is predicted by flow cytometric measurement of residual disease on day 15 bone marrow.
813 *Journal of Clinical Oncology* 27, 5168–5174. <https://doi.org/10.1200/jco.2008.20.8934>.
- 814 7. Dongen, J. J. van, Velden, V. H. van der, Brüggemann, M., and Orfao, A. (2015). Minimal residual
815 disease diagnostics in acute lymphoblastic leukemia: need for sensitive, fast, and standardized
816 technologies. *Blood, The Journal of the American Society of Hematology* 125, 3996–4009.
- 817 8. Pedreira, C. E., Costa, E. S., Lecrevisse, Q., van Dongen, J. J., and Orfao, A. (2013). Overview
818 of clinical flow cytometry data analysis: recent advances and future challenges. *Trends in*
819 *Biotechnology* 31, 415–425. <https://doi.org/10.1016/j.tibtech.2013.04.008>.
- 820 9. Kalina, T., Flores-Montero, J., Van Der Velden, V., Martín-Ayuso, M., Böttcher, S., Ritgen, M.,
821 Almeida, J., Lhermitte, L., Asnafi, V., Mendonça, A., et al. (2012). EuroFlow standardization of
822 flow cytometer instrument settings and immunophenotyping protocols. *Leukemia* 26, 1986–2010.
823 <https://doi.org/https://doi.org/10.1038/leu.2012.122>.
- 824 10. Van Dongen, J., Lhermitte, L., Böttcher, S., Almeida, J., Van Der Velden, V., Flores-Montero, J.,
825 Rawstron, A., Asnafi, V., Lecrevisse, Q., Lucio, P., et al. (2012). EuroFlow antibody panels for
826 standardized n-dimensional flow cytometric immunophenotyping of normal, reactive and malignant
827 leukocytes. *Leukemia* 26, 1908–1975. <https://doi.org/https://doi.org/10.1038/leu.2012.120>.
- 828 11. Duetz, C., Bachas, C., Westers, T. M., and van de Loosdrecht, A. A. (2020). Computational analysis
829 of flow cytometry data in hematological malignancies: future clinical practice? *Current Opinion in*
830 *Oncology* 32, 162–169. <https://doi.org/10.1097/cco.0000000000000607>.
- 831 12. Saeys, Y., Van Gassen, S., and Lambrecht, B. N. (2016). Computational flow cytometry: helping
832 to make sense of high-dimensional immunology data. *Nature Reviews Immunology* 16, 449. <https://doi.org/10.1038/nri.2016.56>.
- 833
- 834 13. Robinson, J. P., Rajwa, B., Patsekina, V., and Davisson, V. J. (2012). Computational analysis of
835 high-throughput flow cytometry data. *Expert Opinion on Drug Discovery* 7, 679–693. <https://doi.org/10.1517/17460441.2012.693475>.
- 836
- 837 14. Reiter, M., Diem, M., Schumich, A., Maurer-Granofszky, M., Karawajew, L., Rossi, G. J., Ratei, R.,
838 Groeneveld-Krentz, S., and Sajaroff, O. E. (2019). Automated flow cytometric mrd assessment in
839 childhood acute b- lymphoblastic leukemia using supervised machine learning. *Cytometry Part A*
840 95, 966–975. <https://doi.org/10.1002/cyto.a.23852>.
- 841 15. Good, Z., Sarno, J., Jager, A., Samusik, N., Aghaeepour, N., Simonds, E. F., White, L., Lacayo,
842 N. J., Fantl, W. J., Fazio, G., et al. (2018). Single-cell developmental classification of b cell precursor
843 acute lymphoblastic leukemia at diagnosis reveals predictors of relapse. *Nature Medicine* 24, 474.
844 <https://doi.org/10.1038/nm.4505>.
- 845 16. Chulián, S., Martínez-Rubio, Á., Pérez-García, V. M., Rosa, M., Blázquez Goñi, C., Rodríguez
846 Gutiérrez, J. F., Hermosín-Ramos, L., Molinos Quintana, Á., Caballero-Velázquez, T., Ramírez-
847 Orellana, M., et al. (2020). High-dimensional analysis of single-cell flow cytometry data predicts
848 relapse in childhood acute lymphoblastic leukaemia. *Cancers* 13, 17. <https://doi.org/10.3390/cancers13010017>.
- 849
- 850 17. Chulián, S., Stolz, B. J., Martínez-Rubio, Á., Blázquez Goñi, C., Rodríguez Gutiérrez, J. F.,
851 Caballero Velázquez, T., Molinos Quintana, Á., Ramírez Orellana, M., Castillo Robleda, A.,
852 Fuster Soler, J. L., et al. (2023). The shape of cancer relapse: Topological data analysis predicts
853 recurrence in paediatric acute lymphoblastic leukaemia. *PLoS Computational Biology* 19,
854 e1011329. <https://doi.org/10.1371/journal.pcbi.1011329>.

- 855 18. Pui, C.-H., Yang, J. J., Bhakta, N., and Rodriguez-Galindo, C. (2018). Global efforts toward the cure
856 of childhood acute lymphoblastic leukaemia. *The Lancet Child & Adolescent Health* 2, 440–454.
857 [https://doi.org/10.1016/s2352-4642\(18\)30066-x](https://doi.org/10.1016/s2352-4642(18)30066-x).
- 858 19. Agarwal, M., Seth, R., and Chatterjee, T. (2021). Recent advances in molecular diagnosis and
859 prognosis of childhood B cell lineage acute lymphoblastic leukemia (B-ALL). *Indian Journal of*
860 *Hematology and Blood Transfusion* 37, 10–20. <https://doi.org/10.1007/s12288-020-01295-8>.
- 861 20. Orlova, D. Y., Zimmerman, N., Meehan, S., Meehan, C., Waters, J., Ghosn, E. E., Filatenkov, A.,
862 Kolyagin, G. A., Gernez, Y., Tsuda, S., et al. (2016). Earth mover's distance (EMD): a true metric
863 for comparing biomarker expression levels in cell populations. *PLoS One* 11, e0151859. <https://doi.org/10.1371/journal.pone.0151859>.
- 865 21. Mocking, T., Duetz, C., van Kuijk, B., Westers, T., Cloos, J., and Bachas, C. (2023). Merging and
866 imputation of flow cytometry data: a critical assessment. *Cytometry Part A*. <https://doi.org/10.1002/cyto.a.24774>.
- 868 22. Pedreira, C. E., Costa, E. S., Barrena, S., Lecrevisse, Q., Almeida, J., van Dongen, J. J., and Orfao,
869 A. (2008). Generation of flow cytometry data files with a potentially infinite number of dimensions.
870 *Cytometry Part A* 73, 834–846. <https://doi.org/10.1002/cyto.a.20608>.
- 871 23. Leite Pereira, A., Lambotte, O., Le Grand, R., Cosma, A., and Tchitchek, N. (2019). CytoBackBone:
872 an algorithm for merging of phenotypic information from different cytometric profiles. *Bioinformatics*
873 35, 4187–4189. <https://doi.org/10.1093/bioinformatics/btz212>.
- 874 24. Abdelaal, T., Höllt, T., van Unen, V., Lelieveldt, B. P., Koning, F., Reinders, M. J., and Mahfouz,
875 A. (2019). CyTOFmerge: integrating mass cytometry data across multiple panels. *Bioinformatics*
876 35, 4063–4071. <https://doi.org/10.1093/bioinformatics/btz180>.
- 877 25. Pedersen, C. B., Dam, S. H., Barnkob, M. B., Leipold, M. D., Purroy, N., Rassenti, L. Z., Kipps, T. J.,
878 Nguyen, J., Lederer, J. A., Gohil, S. H., et al. (2022). cyCombine allows for robust integration of
879 single-cell cytometry datasets within and across technologies. *Nature Communications* 13, 1698.
880 <https://doi.org/10.1038/s41467-022-29383-5>.
- 881 26. Weber, L. M., Nowicka, M., Soneson, C., and Robinson, M. D. (2019). diffcyt: Differential discovery
882 in high-dimensional cytometry via high-resolution clustering. *Communications Biology* 2, 183. <https://doi.org/10.1038/s42003-019-0415-5>.
- 884 27. Van Gassen, S., Callebaut, B., Van Helden, M. J., Lambrecht, B. N., Demeester, P., Dhaene, T.,
885 and Saeys, Y. (2015). FlowSOM: Using self-organizing maps for visualization and interpretation of
886 cytometry data. *Cytometry Part A* 87, 636–645. <https://doi.org/10.1002/cyto.a.22625>.
- 887 28. Becht, E., McInnes, L., Healy, J., Dutertre, C.-A., Kwok, I. W., Ng, L. G., Ginhoux, F., and
888 Newell, E. W. (2019). Dimensionality reduction for visualizing single-cell data using UMAP.
889 *Nature Biotechnology* 37, 38–44. <https://doi.org/10.1038/nbt.4314>.
- 890 29. Lun, A. T., Richard, A. C., and Marioni, J. C. (2017). Testing for differential abundance in mass
891 cytometry data. *Nature Methods* 14, 707–709. <https://doi.org/10.1038/nmeth.4295>.
- 892 30. Bruggner, R. V., Bodenmiller, B., Dill, D. L., Tibshirani, R. J., and Nolan, G. P. (2014). Automated
893 identification of stratifying signatures in cellular subpopulations. *Proceedings of the National*
894 *Academy of Sciences* 111, E2770–E2777. <https://doi.org/10.1073/pnas.1408792111>.
- 895 31. Polikowsky, H. G. and Drake, K. A. (2019). Supervised machine learning with CITRUS for single
896 cell biomarker discovery. *Mass Cytometry: Methods and Protocols*, 309–332. https://doi.org/10.1007/978-1-4939-9454-0_20.

- 898 32. Arvaniti, E. and Claassen, M. (2017). Sensitive detection of rare disease-associated cell subsets via
899 representation learning. *Nature Communications* 8, 14825. <https://doi.org/10.1038/ncomms14825>.
- 900 33. Jan, M. and Majeti, R. (2013). Clonal evolution of acute leukemia genomes. *Oncogene* 32, 135–
901 140. <https://doi.org/10.1038/onc.2012.48>.
- 902 34. Rothenberg-Thurley, M., Amler, S., Goerlich, D., Köhnke, T., Konstandin, N. P., Schneider, S.,
903 Sauerland, M. C., Herold, T., Hubmann, M., Ksienzyk, B., et al. (2017). Persistence of
904 pre-leukemic clones during first remission and risk of relapse in acute myeloid leukemia.
905 *Leukemia*, 1–27. <https://doi.org/10.1038/leu.2017.350>.
- 906 35. Candelli, T., Schneider, P., Garrido Castro, P., Jones, L. A., Bodewes, E., Rockx-Brouwer, D.,
907 Pieters, R., Holstege, F. C., Margaritis, T., and Stam, R. W. (2022). Identification and
908 characterization of relapse-initiating cells in MLL-rearranged infant ALL by single-cell
909 transcriptomics. *Leukemia* 36, 58–67. <https://doi.org/10.1038/s41375-021-01341-y>.
- 910 36. Turati, V. A., Guerra-Assunção, J. A., Potter, N. E., Gupta, R., Ecker, S., Daneviciute, A., Tarabichi,
911 M., Webster, A. P., Ding, C., May, G., et al. (2021). Chemotherapy induces canalization of cell
912 state in childhood B-cell precursor acute lymphoblastic leukemia. *Nature Cancer* 2, 835–852. <https://doi.org/10.1038/s43018-021-00219-3>.
- 914 37. Pan, L., Liu, G., Lin, F., Zhong, S., Xia, H., Sun, X., and Liang, H. (2017). Machine learning
915 applications for prediction of relapse in childhood acute lymphoblastic leukemia. *Scientific*
916 *Reports* 7, 1–9. <https://doi.org/10.1038/s41598-017-07408-0>.
- 917 38. Mahmood, N., Shahid, S., Bakhshi, T., Riaz, S., Ghufuran, H., and Yaqoob, M. (2020). Identification
918 of significant risks in pediatric acute lymphoblastic leukemia (ALL) through machine learning (ML)
919 approach. *Medical & Biological Engineering & Computing*, 1–10. <https://doi.org/10.1007/s11517-020-02245-2>.
- 921 39. Mesegué, M., Alonso-Saladrigues, A., Pérez-Jaume, S., Comes-Escoda, A., Dapena, J. L.,
922 Faura, A., Conde, N., Catalá, A., Ruiz-Llobet, A., Zapico-Muñiz, E., et al. (2021). Lower incidence
923 of clinical allergy with PEG-asparaginase upfront versus the sequential use of native *E. coli*
924 asparaginase followed by PEG-ASP in pediatric patients with acute lymphoblastic leukemia.
925 *Hematological Oncology* 39, 687–696. <https://doi.org/10.1002/hon.2914/v1/review2>.
- 926 40. O’Neill, K., Aghaeepour, N., Špidlen, J., and Brinkman, R. (2013). Flow cytometry bioinformatics.
927 *PLoS Computational Biology* 9, e1003365. <https://doi.org/10.1371/journal.pcbi.1003365>.
- 928 41. Van Gassen, S., Gaudilliere, B., Angst, M. S., Saeys, Y., and Aghaeepour, N. (2020). CytoNorm:
929 a normalization algorithm for cytometry data. *Cytometry Part A* 97, 268–278. <https://doi.org/10.1002/cyto.a.23904>.
- 931 42. Lee, G., Finn, W., and Scott, C. (2011). Statistical file matching of flow cytometry data. *Journal of*
932 *Biomedical Informatics* 44, 663–676. <https://doi.org/10.1016/j.jbi.2011.03.004>.
- 933 43. Law, C. W., Alhamdoosh, M., Su, S., Smyth, G. K., and Ritchie, M. E. (2016). RNA-seq analysis
934 is easy as 1-2-3 with limma, Glimma and edgeR. *F1000Research* 5. <https://doi.org/10.12688/f1000research.9005.3>.
- 936 44. Stone, M. (1974). Cross-validatory choice and assessment of statistical predictions. *Journal of the*
937 *Royal Statistical Society: Series B (Methodological)* 36, 111–133. <https://doi.org/10.1111/j.2517-6161.1974.tb00994.x>.
- 939 45. Cawley, G. C. and Talbot, N. L. (2010). On over-fitting in model selection and subsequent selection
940 bias in performance evaluation. *The Journal of Machine Learning Research* 11, 2079–2107.

- 941 46. Jeni, L. A., Cohn, J. F., and De La Torre, F. (2013). "Facing imbalanced data—recommendations
942 for the use of performance metrics". *2013 Humaine association conference on affective computing
943 and intelligent interaction*. IEEE, 245–251. <https://doi.org/10.1109/acii.2013.47>.
- 944 47. Wainer, J. and Cawley, G. (2021). Nested cross-validation when selecting classifiers is overzealous
945 for most practical applications. *Expert Systems With Applications* 182, 115222. [https://doi.org/10.
946 1016/j.eswa.2021.115222](https://doi.org/10.1016/j.eswa.2021.115222).
- 947 48. Nowicka, M., Krieg, C., Crowell, H. L., Weber, L. M., Hartmann, F. J., Guglietta, S., Becher, B.,
948 Levesque, M. P., and Robinson, M. D. (2017). CyTOF workflow: differential discovery in
949 high-throughput high-dimensional cytometry datasets. *F1000Research* 6.
950 <https://doi.org/10.12688/f1000research.11622.4>.