

1 **Topical Steroid Withdrawal is a Targetable Excess of Mitochondrial NAD+**

2

3 Nadia Shobnam^{1,+}, Grace Ratley^{1,+}, Sarini Saksena^{1,+}, Manoj Yadav¹, Prem Prashant
4 Chaudhary¹, Ashleigh A Sun¹, Katherine N Howe², Manasi Gadkari³, Luis M Franco³, Sundar
5 Ganesan⁴, Katelyn J McCann³, Amy P Hsu³, Kishore Kanakabandi⁵, Stacy Ricklefs⁵, Justin
6 Lack⁶, Weiming Yu⁶, Morgan Similuk and Magdalena A Walkiewicz, for the NIAID Centralized
7 Sequencing Program⁷, Donna D Gardner⁸, Kelly Barta⁹, Kathryn Tullos⁹, and Ian A Myles¹.

8

9 ¹Laboratory of Clinical Immunology and Microbiology (LCIM), Epithelial Therapeutics Unit,
10 National Institute of Allergy and Infectious Diseases (NIAID), National Institutes of Health
11 (NIH), Bethesda MD.

12 ²LCIM, NIAID, NIH, Bethesda MD

13 ³Functional Immunogenomics Section, Systemic Autoimmunity Branch, National Institute of
14 Arthritis and Musculoskeletal and Skin Diseases, NIH, Bethesda, MD

15 ⁴Biological Imaging Section, Research Technology Branch, NIAID, NIH, Bethesda, MD

16 ⁵Genomic Research Section, Research Technologies Branch (RTB), Rocky Mountain
17 Laboratories, NIAID, NIH, Hamilton, MT

18 ⁶Integrated Data Science Section, RTB, NIAID, NIH, Bethesda, MD

19 ⁷Lymphocyte Biology Section, Laboratory of Immune System Biology, NIAID, NIH, Bethesda,
20 MD

21 ⁸Centralized Sequencing Program, Division of Intramural Research, NIAID, Bethesda, MD

22 ⁹Allergy & Asthma Network, Fairfax, Virginia

23 ¹⁰International Topical Steroid Awareness Network, Dacula, Georgia

24

25 + denotes equal contribution

26 * Corresponding author: mylesi@niaid.nih.gov

27

28

29

30 **Abstract**

31 **Background:**

32 Topical corticosteroids (TCS) are first-line therapies for numerous skin conditions. Topical
33 Steroid Withdrawal (TSW) is a controversial diagnosis advocated by patients with prolonged
34 TCS exposure who report severe systemic reactions upon treatment cessation. However, to date
35 there have been no systematic clinical or mechanistic studies to distinguish TSW from other
36 eczematous disorders.

37

38 **Methods:**

39 A re-analysis of a previous survey with eczematous skin disease was performed to evaluate
40 potential TSW distinguishing symptoms. We subsequently conducted a pilot study of 16 patients
41 fitting the proposed diagnostic criteria. We then performed: tissue metabolomics,
42 transcriptomics, and immunostaining on skin biopsies; serum metabolomics and cytokine
43 assessments; shotgun metagenomics on microbiome skin swabs; genome sequencing; followed
44 by functional, mechanistic studies using human skin cell lines and mice.

45

46 **Results:**

47 Clinically distinct TSW symptoms included burning, flushing, and thermodyregulation.
48 Metabolomics and transcriptomics both implicated elevated NAD⁺ oxidation stemming from
49 increased expression of mitochondrial complex I and conversion of tryptophan into kynurenine
50 metabolites. These abnormalities were induced by glucocorticoid exposure both *in vitro* and in a
51 cohort of healthy controls (N=19) exposed to TCS. Targeting complex I via either metformin or

52 the herbal compound berberine improved outcomes in both cell culture and in an open-label case
53 series for patients with TSW.

54

55 **Conclusion:**

56 Taken together, our results suggest that TSW has a distinct dermatopathology. While future
57 studies are needed to validate these results in larger cohorts, this work provides the first
58 mechanistic evaluation into TSW pathology, and offers insights into clinical identification,
59 pharmacogenomic candidates, and directed therapeutic strategies.

60

61

62 **Introduction**

63 Topical steroids are first-line therapies for atopic dermatitis (AD) and other inflammatory
64 dermatological conditions¹. Although more accurately described as glucocorticoids, topical
65 corticosteroids (TCS) is the more common clinical term. In recent decades, there has been a
66 concerning rise in reports of severe systemic adverse reactions due to long-term use and abrupt
67 cessation of TCS (commonly referred to as Topical Steroid Withdrawal; TSW)². Although no
68 formal diagnostic criteria for TSW exist, reports of patients experiencing TSW are very common
69 online³. Initial reports concluded that TSW was limited to exposed areas for patients who
70 applied high-potency TCS to the face or genitals⁴. However, subsequent case series have better
71 identified the ways in which TSW may be different from AD, contact dermatitis, or other
72 dermatoses^{2,5-7}, including disease manifestations on regions of the body where TCS were never
73 applied. Although resolution may take months to years, improvement is seen through avoidance
74 of TCS therapy, further suggesting that TSW is a distinct clinical entity rather than a flare of the
75 underlying dermatoses⁸.

76

77 Although some have labeled the patient concerns as “steroid phobia”⁹, there have been no
78 systematic clinical or mechanistic studies to either refute or support TSW as molecularly distinct
79 from other dermatopathies. Herein, we report a re-analysis of a previous survey of 1,889 adults
80 with eczematous skin disorders⁷ to clinically distinguish those that self-diagnosed with TSW
81 from those that denied having TSW. We then report the results of a pilot study of 16 patients
82 with symptoms consistent with TSW. Using multi-omics analysis of serum and skin samples we
83 identified increased vitamin B3 (nicotinic acid; NAD⁺) oxidation stemming from overexpression
84 of known NAD⁺ producers^{10,11} such as mitochondrial complex I. Open-label treatment with anti-

85 complex I medications (metformin or the “herbal metformin” berberine) led to notable
86 improvements in symptoms. Our work represents the first investigation into the pathogenesis of
87 TSW resulting in a promising targeted therapy.

88

89 **Results**

90 *Patients with TSW have symptoms distinct from atopic dermatitis*

91 Reanalysis of a previously published survey of patients with eczematous skin disease⁷ identified
92 worsening skin symptoms despite TCS use as most predictive of self-diagnosed TSW compared
93 to those with eczematous skin disease who denied having TSW (Fig. 1A; Fig. S1A). Worsening
94 signs may include reduced TCS effectiveness, a need for higher potency, spreading rash despite
95 treatment, or new-onset symptoms of temperature dysregulation and full body redness/burning
96 (Fig. 1A). Peak itch intensity and sleep disturbance were significantly higher in those affirming
97 TSW (Fig. 1B). However, there were no consistent, significant differences in body site for either
98 severity (Fig. S1B) or application site (Fig. 1A). The dryness and oozing scores typically
99 collected for the Patient Oriented SCORing Atopic Dermatitis (PO-SCORAD¹²) severity metric
100 were inversely associated with TSW (Fig. 1A), however a greater degree of redness, scratching,
101 swelling, and thickening were seen in TSW (Fig. S1C). Skin specific symptoms with a greater
102 than 80% prevalence that are distinct from AD were deemed as major criteria while the
103 remainder were utilized as minor criteria (Fig. 1C). Twenty-five percent of patients reported all
104 related symptoms, while the combination of ≥ 1 major and ≥ 3 minor offered $>90\%$ sensitivity for
105 capturing those reporting TSW in the survey (Fig. 1C). Nearly 25% of patients reported
106 symptoms lasting longer than 3 years after discontinuation of TCS (Fig. 1D).

107

108 Although many reports imply that TSW is limited to the application of high-potency
109 glucocorticoids to the face or genitals^{4,13}, we enrolled a cohort (N = 16) who each experienced
110 full-body disease, including areas that had never been directly treated with TCS (Fig. S1D; Table
111 S1). Patients described full body redness, flushing, and anhidrosis (Fig. 1E; redacted per
112 medRxiv policies) occurring 4-6 weeks after discontinuation of TCS, which: tended to spare the
113 nose (Fig. 1F; termed “headlamp sign”¹⁴; redacted per medRxiv policies), palms, and soles (Fig.
114 1F; redacted per medRxiv policies); and often formed “red sleeves” on the arms (Fig. 1G;
115 redacted per medRxiv policies). Additional symptoms included: subjective temperature
116 changes; stabbing neuropathic pain (termed “zingers” by patients; Fig. S1D); loose skin over the
117 flexor surfaces (“elephant wrinkles”; Fig. 1H; redacted per medRxiv policies); hair loss (Fig. 1I;
118 redacted per medRxiv policies); and substantial skin shedding (Fig. 1J- redacted per medRxiv
119 policies; Fig. S1D).

120

121 *Serum metabolomics suggest systemic lipid dysregulation*

122 Serum metabolomics for patients with TSW was compared to healthy volunteers (HV; N = 11),
123 and patients with AD who did not report symptoms of TSW (N = 10). Although matched for sex
124 and ethnicity, the TSW cohort was slightly older (mean 37.1 years) than AD (26 years) and HV
125 (25 years; Table S1; redacted per medRxiv policies). Significant differences were seen under
126 global similarity analysis but not for any specific identifiable metabolites (Fig. S2A-D).
127 However, collating the results into MetaboAnalyst pathway analysis¹⁵ suggested patients with
128 TSW had significant deficiencies in the sphingolipid and urea cycle amino acid pathways (Fig.
129 S2E) compared to both HV and AD. Patients with TSW had significant overabundance of

130 metabolites in several pathways, including glycerophospholipids and C21-steroid hormones
131 including cortisol (Fig. S2F; Fig. S3).

132

133 *Markers of dysbiosis and inflammation in TSW were similar to those previously described in*
134 *atopic dermatitis*

135 Evaluation of the microbiome signatures in TSW revealed significant differences from HV in
136 bacterial speciation at the genus level (Fig. 2A-B; Fig. S4A). Similar to AD¹⁶, there was a
137 predominance of Staphylococcal species, particularly *S. aureus*, burden (Fig. 2C) and reduced
138 alpha bacterial diversity (Fig. 2D). Less robust differences with respect to HV were seen in
139 fungal speciation, with results again similar to those described for AD (Fig. 2E; Fig. S4B)¹⁷.

140 Virome signatures demonstrated an increased burden of viruses associated with fungal and
141 bacterial taxa (Fig. S4C) while functional metagenomics revealed global differences (Fig. 2F)
142 that were dominated by transcripts associated with *Staphylococcus* infection (Fig. S5A-B).

143

144 Like AD¹⁸, preliminary characterization of cell infiltrates were primarily CD4+ and CD8+ T-
145 cells, as well as CD68+ monocytes (Fig. S5C); these immune cells were detectable in thin
146 sections of skin biopsies for patients with TSW but required 3-dimensional volume analysis to
147 detect in HV samples (Fig. S5D; Movie S1). For 11 of the patients in the cohort, IgE levels were
148 elevated (Fig. 2G). Consistent with reported utility of dupilumab in TSW¹⁹, serum cytokine
149 analysis indicated significantly increased levels of interleukin (IL-) 4 and IL-13, as well as
150 proinflammatory IL-6 and CCL13 (Fig. 2H; Table S2).

151

152 *Metabolomics implicates vitamin B3 metabolism*

153 Skin metabolomics was performed using MALDI-imaging mass spectrometry²⁰, which identifies
154 metabolites in space (example shown in Fig. 3A). Ranking the abundance of metabolites that
155 could be identified using m/z and collisional cross section (CCS) revealed distinctions between
156 TSW and HV (Fig. 3B). Using MetaboAnalyst¹⁵ to contrast TSW with both HV and AD
157 identified a significant increase in vitamin B3 (nicotinate and nicotinamide) metabolism (Fig.
158 3C). Several pathways were downregulated compared to the HV and AD cohorts, most
159 prominently tryptophan metabolism (Fig. 3D). Of note, nicotinic acid is a derivative of
160 tryptophan through a process that generates the known neuropathologic, and anticholinergic
161 intermediate kynurenine via the enzymes indoleamine 2,3-dioxygenase (IDO) and tryptophan 2,3-
162 dioxygenase (TDO)¹⁰. Consistent with the known interaction between NAD⁺ and the itch
163 regulating transient receptor potential (TRP) family ion channels^{21,22}, staining a subset of patients
164 and controls for expression of TRPA1 revealed enhanced dermal, but not total, expression (Fig.
165 S5E-F).

166

167 *RNAseq suggests mitochondrial dysfunctionis present in TSW*

168 Biopsies subjected to RNAseq identified cell cycle and neurodegeneration as the most
169 distinguishing pathways when comparing TSW to HV (Fig. S6A). The neurodegeneration
170 pathway includes *Wnt* signaling (Fig. 4A) which has been linked to AD previously and would be
171 expected to produce increased cell proliferation²³. Several mitochondrial complexes were also
172 upregulated in patients with TSW, particularly complex I (Fig. 4B) which produces NAD⁺ as a
173 byproduct. Several other aspects of nicotinate metabolism were upregulated in TSW (Fig. S6B).
174 Opposing expression of *IDO2* and *TDO2* was seen between TSW and controls (Fig. 4C; full
175 image in Fig. S6C). STRING analysis²⁴ demonstrated a strong signal for histone modifying and

176 DNA processing pathways but were most strongly linked to proton motive force in ATP
177 synthesis (Fig. S6D). Activation of inflammatory pathways known to respond to upregulations in
178 the oxidative stress pathways (Fig. S6A) was evident for MAP kinase (Fig. S7A), JAK-STAT
179 (Fig. S7B), NFκB (Fig. S8A), and T-cell receptor signaling (Fig. S8B).

180

181 *Nicotinic acid and clobetasol exposure impact stem cell metabolism*

182 Although niacin and nicotinic acid are known to induce skin flushing²⁵, most research into the
183 skin effects of niacin has focused on dietary intake. Topical application of nicotinic acid to
184 mouse ears yielded a dose-dependent increase in swelling (Fig. 5A), but with redness that was
185 below the mouse hairline (Fig. 5B). This finding is distinct from the standard murine models of
186 AD such as MC903, which induce dermatitis on the entire ear (Fig. S9A). Combining the prior
187 reports of nasal, palmar, and plantar sparing, the protracted resolution¹⁴, and murine disease
188 limited to areas with hair (Fig. 5B) suggested a possible role for stem cells in the pathology of
189 TSW given that these cells reside at the base of each hair follicle and serve as progenitors for
190 replenishing other skin cells²⁶.

191

192 Similar to prior reports²⁷, incubation of human follicular stem cells (HFSC) with nicotinic acid
193 led to enhanced proliferation (Fig. 5C). Exposure to the commonly prescribed, high-potency
194 glucocorticoid clobetasol also significantly increased HFSC proliferation (Fig. 5D). Functional
195 metabolic analysis of HFSC indicated clobetasol exposure increased maximal extracellular
196 acidification rate (ECAR; a measurement of glycolysis; Fig. 5E, Fig. S9B) but not resting
197 oxygen consumption rate (OCR; a proxy for oxidative phosphorylation; Fig. 5F, Fig. S9C).
198 Incubation of HFSC with clobetasol did not impact vitamin B3 metabolism, however, removing

199 steroids from the media after clobetasol exposure impacted vitamin B3 and other metabolic
200 pathways including the TCA cycle (Fig. 5G; Fig. S9D). Differences between continuous
201 glucocorticoid exposure and steroid withdrawal were also evident for human primary
202 keratinocytes, fibroblasts, and Schwann nerve cells (Fig. 5G; Fig. S9E-G).

203

204 These results suggested that TSW pathology may represent an overactivation of complex I
205 driving up NAD⁺ oxidation, either through increased complex I expression or increased NADH
206 availability via tryptophan metabolism (Fig. S10A). Metformin is a known blocker of complex
207 I¹¹, has pre-clinical efficacy in models of AD²⁸, and reduces the conversion of tryptophan to
208 kynurenine²⁹. Similarly, berberine is the main ingredient in the traditional Chinese medicine,
209 Wu Mei Wan, previously shown to improve TSW³⁰; berberine is also a known complex I
210 inhibitor with similar uses as metformin³¹. Metformin treatment of HFSC prevented
211 hyperproliferation (Fig. 5D) as well as the alterations in basal OCR and ECAR (Fig. 5E-F, Fig.
212 5H-I, Fig. S9B-C). Berberine did not alter proliferation (Fig. 5D) or basal ECAR (Fig. 5I, Fig.
213 S9B) but was a more potent inhibitor of OCR (Fig. 5F, Fig. 5H, Fig. S9C). Diluting berberine to
214 as low as 0.6uM had inhibitory activity without a strong coloration (Fig. 5H, Fig. S10B).

215

216 *Topical glucocorticoids alter mitochondrial transcription pathways*

217 Nineteen healthy controls aged 18-64 were treated with the topical glucocorticoid
218 methylprednisolone aceponate. Skin biopsies were taken prior to exposure, then again 4 hours
219 after topical application. RNAseq identified numerous significant differences (Fig. S11A)
220 concentrated in the keratinocyte differentiation pathways (Fig. S11B). Mitochondrial
221 complexes, especially the complex I, NAD⁺ producing enzyme, ubiquinone reductase were

222 significantly upregulated by topical glucocorticoid exposure (Fig. S11C-D). Impacts on *Wnt* and
223 tryptophan metabolism were evident, but less robust than for TSW (Fig. S12A-B).

224

225 *Complex I Targeting Therapies Improve TSW Symptoms*

226 Patients in the cohort were informed about the potential utility of metformin and berberine and
227 provided the analysis by the commercial outlet ConsumerLabs identifying that Natural Factors
228 WellBetX and Solaray supplement brands contained the indicated amount of berberine without
229 harmful contaminants. Three patients elected to take metformin through their primary care
230 providers, 9 elected to take berberine purchased online, 2 made no changes in treatment, while 1
231 opted for alternate treatments (Table S1). No serious complications were reported (Table S1).

232

233 After 3-5 months of use, subjective overall improvement between 5% and 80% was reported for
234 both interventions (Fig. 5J), with non-significantly greater improvement reported for those on
235 berberine. Patients initially noted their skin becoming “softer” and/or “smoother” followed by
236 an “inside out” resolution of itch in which the bone-deep itch resolved before the superficial itch.
237 Rashes improved in both groups (Fig. 5K; redacted per medRxiv policies). Patients still reported
238 flares related to known triggers such as infection, stress, or temperature change; however, these
239 flares were described as of lower severity or shorter duration.

240

241 *DNA variants with differentially expressed transcripts in TSW included PAX6 and FMO2*

242 Genome sequencing only identified the highly variable *TTN* as the gene with variants of
243 uncertain significance (VUS) across the cohort (Fig. S13A-B). Expanded analysis of the genome
244 identified 206 genes with DNA variants present in at least 12 of the 16 participants with

245 combined annotation dependent depletion (CADD) scores greater than 20 (a predictor of how
246 deleterious to protein function a variant might be; Fig. S13C). STRING analysis of these
247 variants suggested the corresponding genes were enriched for involvement in cell adhesion,
248 neuron development, and mitochondrial depletion (Fig. S13D-F). Comparing the variant list
249 with the RNAseq results indicated that genes which contained DNA variants and differentially
250 expressed transcripts were led by the known modulator of NADPH metabolism *FMO2*³² and
251 *PAX6*, which may mediate AD-relevant pathways in epithelial-to-mesenchymal transition^{33,34}
252 (Fig. S13G-I). Sequence analysis of the mitochondrial genomes did not identify any common
253 non-synonymous variants within our cohort (Table S3).

254

255 **Discussion**

256 Our results indicate that TSW is a distinct, iatrogenic dermatopathy deserving of further
257 investigation. In this study, we propose diagnostic criteria to separate TSW from other
258 eczematous skin disorders, provide early insights into cellular pathogenesis, identify candidate
259 DNA variants, and describe the results from an open-label case series of two molecularly
260 targeted therapies. Although the severity of skin disease was greater in our TSW cohort than
261 their AD comparators, our findings are distinct from the numerous reports of lipid-centric defects
262 seen in severe AD³⁵.

263

264 Our working hypothesis of TCS induced complex I hyperactivity in follicular stem cells is
265 supported by the established effects of glucocorticoids on mitochondria³⁶ and the clinical data
266 detailing the distribution and duration of TSW symptoms^{2,5-7}. In some individuals, prolonged
267 use may result in a form of endogenous chemical irritation due to overproduction of oxidized

268 NADH (NAD⁺). The enhanced NADH production generated by tryptophan degradation results
269 in an increase in neuro-toxic kynurenine metabolites via the corticosteroid-responsive enzymes
270 IDO and TDO¹⁰. We hypothesize that epigenetic changes may underly the protracted nature of
271 TSW recovery, however cell specific analysis will be needed to further elucidate our findings.

272

273 A hypothesis predicated on NAD⁺ is consistent with each of the proposed phases of TSW⁷: the
274 initial rise in NAD⁺ combined with the resultant anticholinergic effects of kynurenic mediators
275 may lead to the early signs of flushing, anhidrosis, palpitations, neuralgia, and vision changes³⁷.
276 Subsequent Wnt overactivity, mitochondrial inflammatory reactive oxygen species, and TRP
277 receptor activation would be expected to induce desquamation, pruritus, skin proliferation,
278 changes in temperature sensation, and may make those with TSW more susceptible to effects of
279 chemical triggers associated with pruritic skin diseases³⁸.

280

281 Our work suggests clinical insights for practitioners treating patients experiencing worsening
282 eczematous skin disease despite >4 months of TCS treatment. For example, the prior claims of
283 disease limited to the face or genitals⁴ are not supported by our data and should not guide
284 diagnosis. Instead, patients with the identified TSW predictive symptoms should be evaluated
285 for the diagnosis and considered for treatment using mitochondrial complex I inhibitors;
286 however, expanded formal trials will be needed to confirm the safety and efficacy of these
287 treatments. Although topical berberine was not attempted in this study, the efficacious
288 concentrations *in vitro* are akin to dissolving one 500 mg capsule in a liter of water and then
289 adding ¼ cup of the resultant solution to a standard 60-gallon bathtub as is done with bleach

290 baths in AD³⁹. Exposure to heat may also be a speculative intervention given higher
291 temperatures preferentially inhibit mitochondrial complex I⁴⁰.

292

293 Our work is limited in several ways. First, querying TSW-specific symptoms from eczematous
294 patients who deny having TSW will be required to validate the diagnostic criteria through
295 calculating specificity and accuracy. The small pilot enrollment and open label case series may
296 not fully capture either the pathology or treatment response for a disorder with a reported
297 population of the scale of TSW. Our global subjective assessment of TSW improvement should
298 be replaced by prospective severity indices specific to TSW which incorporate scores for
299 thermodyregulation, burning, and flushing. Additionally, larger studies will be needed to test
300 whether the proposed DNA variants are specifically associated with TSW and, if so, what the
301 biologic consequences of those variants might be. Similarly, the statistical association with
302 Protopic (tacrolimus; Fig. 1A) will require targeted evaluation.

303

304 Importantly, while our case series suggests expanded clinical assessments are warranted, no
305 patient reported complete resolution of symptoms. While prolonged treatment may yield
306 continued improvement, preemptive caution may be warranted for exposures longer than 4
307 consecutive months and identifying preventive strategies and predictive factors should remain
308 paramount.

309

310 **Acknowledgments:**

311 This work was supported by the Division of Intramural Research (DIR) of the National Institute
312 of Allergy and Infectious Diseases, NIH. LMF and MG are supported by the Intramural

313 Research Program of the National Institute of Arthritis and Musculoskeletal and Skin Diseases.
314 NIAID Centralized Sequencing Program contributor information: Rajarshi Ghosh, Bryce Seifert,
315 Mari Tokita, Jia Yan, Colleen Jodarski, Michael Kamen, Rachel Gore Moses, Nadjalisse
316 Reynolds-Lallement, Katie Lewis, Sarah Bannon, Adrienne Borges, Nicole Gentile, Katya
317 Damskey, Sophie Byers, Halyn Orellana, Sruthi Srinivasan. Allergy & Asthma Network has
318 received funding from Sanofi, Regeneron, Genentech, Pfizer, and Novartis for unbranded disease
319 awareness and education; such funding was not relevant to the presented research.

320 **Figure Legends:**

321 **Figure 1: Topical Steroid Withdrawal (TSW) is distinguishable from other eczematous skin**
322 **diseases.** (A) Lasso regression model of previously reported survey results from 1,889
323 individuals with eczematous skin disease⁷ establishing the responses that are most predictive of
324 self-identified TSW. Results separated by over-the-counter hydrocortisone (HC) versus
325 prescription topical steroids (TS). (B) Intensity of itch and sleep disruption for the respondents
326 affirming TSW versus those denying such diagnosis. (C) Proposed diagnostic criteria derivation
327 evaluating the sensitivity (Sens.) for number of reported Major and Minor criteria extracted from
328 survey from respondents reporting suffering from TSW (N=1,486). (D) Time to symptom of
329 TSW symptoms as reported by respondents (N=1,486). (E-I) Representative images of TSW
330 associated symptoms; although images provided with explicit permission and consent, medRxiv
331 does not allow images of body parts and thus these images have been removed. The final
332 publication will display these images.

333

334 **Figure 2: Microbiome and Th2 cytokine signatures in TSW differ from healthy controls.**
335 Shotgun metagenomic sequencing was performed on skin swabs from patients with TSW (N=16)
336 versus healthy volunteers (N=7). (A) Speciation at genre level with most abundant taxa indicated
337 (full list in Fig. S4A). (B) Similarity plot as measured by NMDS (non-metric multidimensional
338 scaling) for genre-level bacterial analysis. (C) Normalized counts for *Staphylococcus aureus*. (D)
339 Chao1 alpha-diversity index. (E-F) Speciation and NMDS for fungal genre. (G) IgE levels (mean
340 \pm SD) for TSW cohort (dotted line indicates upper limit of normal for our hospital). (H) Serum
341 cytokine levels for HV, TSW and patients with atopic dermatitis without history of TSW (AD)
342 for interleukin (IL-) 13, IL-6, CCL13, and IL-4. Significance adjusted for three-way comparison,
343 but not the full number of cytokines analyzed. * = p value <0.05, ns = not significant, other p
344 values indicated.

345

346 **Figure 3: Skin from patients with TSW demonstrates disruptions in Vitamin B3 and**
347 **Tryptophan metabolism.** Skin biopsy samples from patients with topical steroid withdrawal
348 (TSW; N=16), Atopic Dermatitis (AD; N=10), and healthy volunteers (HV; N=11) underwent
349 MALDI-imaging mass spec. (A) Representative image for distribution of metabolite at 772.5213
350 m/z. for HV and TSW (B) Intensity values for metabolites identifiable through combination of
351 m/z and collisional cross-section for HV and TSW. (C-D) MetaboAnalyst pathway analysis for
352 metabolites ranked by how predictive of TSW they were compared with both HV and AD
353 cohorts (C) and metabolites ranked by ROC value (receiver operating characteristic) for the HV
354 and AD cohorts compared to TSW (D). Bolding indicates pathways not identified as distinctive
355 for AD relative to HV.

356

357 **Figure 4: Skin from patients with TSW demonstrates disruptions in Niacin related**
358 **metabolic pathways.** Skin biopsy samples from patients with topical steroid withdrawal (TSW;
359 N=16) and healthy volunteers (HV; N=11) underwent RNAseq analysis. (A-C) KEGG pathway
360 analysis for *Wnt* signaling (A), Oxidative phosphorylation (B), and Nicotinate and Nicotinamide

361 metabolism (C; full image in Fig. S6B). Superimposed \log_{10} fold change, green indicates
362 product is more abundant in HV, red indicates product is more abundant in patients with TSW.

363

364 **Figure 5: Steroid withdrawal induces mitochondrial associated niacin overproduction in**

365 **human skin cells.** (A-B) Mice were treated for 8 days with daily topical application of nicotinic

366 acid. Resultant ear thickness (A) and representative image of redness below shaved hairline (B)

367 are shown. (C) Human follicular stem cells (HFSC) exposed to increasing doses of nicotinic

368 acid, scale bars indicate 2mm. (D) Total cell count for HFSC incubated in clobetasol for 48

369 hours (Steroid), clobetasol for 24 hours followed by normal media for 24 hours (Steroid

370 withdrawal), or under steroid conditions with 10uM for metformin or berberine. Dots indicate

371 replicate wells. (E-F) HFSC under mitochondrial stress test for Seahorse assay; indicating basal

372 extracellular acidification rate (ECAR; a measurement of glycolysis) and basal oxygen

373 consumption rate (OCR; a proxy for oxidative phosphorylation) for cells incubated as in panel D.

374 (G) MetaboAnalyst pathway derive index of pathway significance for HFSC, keratinocytes

375 (KC), fibroblasts (FB), or Schwann cells (Sch.) under steroid (S) and steroid withdrawal (W)

376 conditions as measured by imaging mass spec. (H) Basal OCR and ECAR for HFSC incubated

377 with metformin or berberine (but no glucocorticoids) for 24 hours before Seahorse analysis. (J)

378 Response from patients for global assessment of overall improvement after 3-5 months of

379 treatment with indicated intervention. Open diamond indicates patient who started on metformin

380 for 2 months, then switched to berberine for 2 months. Open circle indicates patient that

381 discontinued berberine after 4 weeks when she discovered she was pregnant. Open triangle

382 indicates a patient who used both berberine and ‘activated plasma’. Closed square indicate

383 patient with a multitude of various interventions (See Table S3 for more details). One participant

384 was loss to follow up. (K) Representative images of improvement in patients who used

385 berberine; although images provided with explicit permission and consent, medRxiv does not

386 allow images of body parts and thus these images have been removed. The final publication will

387 display these images. Data represent 3 independent experiments (A-I) and are indicated by mean

388 \pm SEM.

389

390 REFERENCES

391 1. Eichenfield LF, Tom WL, Berger TG, et al. Guidelines of care for the management of
392 atopic dermatitis: section 2. Management and treatment of atopic dermatitis with topical
393 therapies. *J Am Acad Dermatol* 2014;71(1):116-32. DOI: 10.1016/j.jaad.2014.03.023.
394 2. Hwang J, Lio PA. Topical corticosteroid withdrawal ('steroid addiction'): an update of a
395 systematic review. *J Dermatolog Treat* 2022;33(3):1293-1298. DOI:
396 10.1080/09546634.2021.1882659.
397 3. Bowe S, Masterson S, Murray G, Haugh I. Topical steroid withdrawal through the lens of
398 social media. *Clin Exp Dermatol* 2022;47(8):1554-1557. DOI: 10.1111/ced.15194.
399 4. Hajar T, Leshem YA, Hanifin JM, et al. A systematic review of topical corticosteroid
400 withdrawal ("steroid addiction") in patients with atopic dermatitis and other dermatoses. *J*
401 *Am Acad Dermatol* 2015;72(3):541-549 e2. DOI: 10.1016/j.jaad.2014.11.024.
402 5. Sheary B, Harris MF. Cessation of Long-term Topical Steroids in Adult Atopic Dermatitis:
403 A Prospective Cohort Study. *Dermatitis* 2020;31(5):316-320. DOI:
404 10.1097/DER.0000000000000602.
405 6. Brookes TS, Barlow R, Mohandas P, Bewley A. Topical steroid withdrawal: an emerging
406 clinical problem. *Clin Exp Dermatol* 2023;48(9):1007-1011. DOI: 10.1093/ced/llad161.
407 7. Barta K, Fonacier LS, Hart M, et al. Corticosteroid exposure and cumulative effects in
408 patients with eczema: Results from a patient survey. *Ann Allergy Asthma Immunol*
409 2023;130(1):93-99 e10. DOI: 10.1016/j.anai.2022.09.031.
410 8. Feschuk AM, Pratt ME. Topical steroid withdrawal syndrome in a mother and son: A
411 case report. *SAGE Open Med Case Rep* 2023;11:2050313X231164268. DOI:
412 10.1177/2050313X231164268.
413 9. Finnegan P, Murphy M, O'Connor C. #corticophobia: a review on online misinformation
414 related to topical steroids. *Clin Exp Dermatol* 2023;48(2):112-115. DOI:
415 10.1093/ced/llac019.
416 10. Qin Y, Wang N, Zhang X, Han X, Zhai X, Lu Y. IDO and TDO as a potential therapeutic
417 target in different types of depression. *Metab Brain Dis* 2018;33(6):1787-1800. DOI:
418 10.1007/s11011-018-0290-7.
419 11. Vial G, Detaille D, Guigas B. Role of Mitochondria in the Mechanism(s) of Action of
420 Metformin. *Front Endocrinol (Lausanne)* 2019;10:294. DOI: 10.3389/fendo.2019.00294.
421 12. Faye O, Meledie N'Djong AP, Diadie S, et al. Validation of the Patient-Oriented
422 SCORing for Atopic Dermatitis tool for black skin. *J Eur Acad Dermatol Venereol*
423 2020;34(4):795-799. DOI: 10.1111/jdv.15999.
424 13. Spergel JM, Leung DYM. Topical steroid withdrawal syndrome: Should we worry? *Ann*
425 *Allergy Asthma Immunol* 2023;130(1):8. DOI: 10.1016/j.anai.2022.09.005.
426 14. Sheary B. Steroid Withdrawal Effects Following Long-term Topical Corticosteroid Use.
427 *Dermatitis* 2018;29(4):213-218. DOI: 10.1097/DER.0000000000000387.
428 15. Pang Z, Chong J, Zhou G, et al. MetaboAnalyst 5.0: narrowing the gap between raw
429 spectra and functional insights. *Nucleic Acids Res* 2021;49(W1):W388-W396. DOI:
430 10.1093/nar/gkab382.
431 16. Gough P, Zeldin J, Myles IA. Assessing microbial manipulation and environmental
432 pollutants in the pathogenesis of psoriasis. *Front Immunol* 2022;13:1094376. DOI:
433 10.3389/fimmu.2022.1094376.
434 17. Tao R, Li R, Wang R. Dysbiosis of skin mycobiome in atopic dermatitis. *Mycoses*
435 2022;65(3):285-293. DOI: 10.1111/myc.13402.
436 18. Sugita K, Akdis CA. Recent developments and advances in atopic dermatitis and food
437 allergy. *Allergol Int* 2020;69(2):204-214. DOI: 10.1016/j.alit.2019.08.013.

- 438 19. Arnold KA, Treister AD, Lio PA. Dupilumab in the management of topical corticosteroid
439 withdrawal in atopic dermatitis: A retrospective case series. *JAAD Case Rep*
440 2018;4(9):860-862. DOI: 10.1016/j.jdc.2018.06.012.
- 441 20. Yadav M, Chaudhary PP, D'Souza BN, Spathies J, Myles IA. Impact of Skin Tissue
442 Collection Method on Downstream MALDI-Imaging. *Metabolites* 2022;12(6). DOI:
443 10.3390/metabo12060497.
- 444 21. Ma L, Lee BH, Mao R, et al. Nicotinic acid activates the capsaicin receptor TRPV1:
445 Potential mechanism for cutaneous flushing. *Arterioscler Thromb Vasc Biol*
446 2014;34(6):1272-80. DOI: 10.1161/ATVBAHA.113.303346.
- 447 22. Arendt-Nielsen L, Carstens E, Proctor G, et al. The Role of TRP Channels in Nicotinic
448 Provoked Pain and Irritation from the Oral Cavity and Throat: Translating Animal Data to
449 Humans. *Nicotine Tob Res* 2022;24(12):1849-1860. DOI: 10.1093/ntr/ntac054.
- 450 23. Myles IA, Anderson ED, Earland NJ, et al. TNF overproduction impairs epithelial
451 staphylococcal response in hyper IgE syndrome. *J Clin Invest* 2018;128(8):3595-3604.
452 DOI: 10.1172/JCI121486.
- 453 24. Szklarczyk D, Kirsch R, Koutrouli M, et al. The STRING database in 2023: protein-
454 protein association networks and functional enrichment analyses for any sequenced
455 genome of interest. *Nucleic Acids Res* 2023;51(D1):D638-D646. DOI:
456 10.1093/nar/gkac1000.
- 457 25. Kamanna VS, Ganji SH, Kashyap ML. The mechanism and mitigation of niacin-induced
458 flushing. *Int J Clin Pract* 2009;63(9):1369-77. DOI: 10.1111/j.1742-1241.2009.02099.x.
- 459 26. Diaz-Garcia D, Filipova A, Garza-Veloz I, Martinez-Fierro ML. A Beginner's Introduction
460 to Skin Stem Cells and Wound Healing. *Int J Mol Sci* 2021;22(20). DOI:
461 10.3390/ijms222011030.
- 462 27. Tan CL, Chin T, Tan CYR, et al. Nicotinamide Metabolism Modulates the
463 Proliferation/Differentiation Balance and Senescence of Human Primary Keratinocytes. *J*
464 *Invest Dermatol* 2019;139(8):1638-1647 e3. DOI: 10.1016/j.jid.2019.02.005.
- 465 28. Choi SY, Lee C, Heo MJ, et al. Metformin ameliorates animal models of dermatitis.
466 *Inflammopharmacology* 2020;28(5):1293-1300. DOI: 10.1007/s10787-020-00704-8.
- 467 29. Muzik O, Burghardt P, Yi Z, Kumar A, Seyoum B. Successful metformin treatment of
468 insulin resistance is associated with down-regulation of the kynurenine pathway.
469 *Biochem Biophys Res Commun* 2017;488(1):29-32. DOI: 10.1016/j.bbrc.2017.04.155.
- 470 30. Wang Z, Wang ZZ, Geliebter J, Tiwari R, Li XM. Traditional Chinese medicine for food
471 allergy and eczema. *Ann Allergy Asthma Immunol* 2021;126(6):639-654. DOI:
472 10.1016/j.anai.2020.12.002.
- 473 31. Fang X, Wu H, Wei J, Miao R, Zhang Y, Tian J. Research progress on the
474 pharmacological effects of berberine targeting mitochondria. *Front Endocrinol*
475 (Lausanne) 2022;13:982145. DOI: 10.3389/fendo.2022.982145.
- 476 32. Bailleul G, Nicoll CR, Mascotti ML, Mattevi A, Fraaije MW. Ancestral reconstruction of
477 mammalian FMO1 enables structural determination, revealing unique features that
478 explain its catalytic properties. *J Biol Chem* 2021;296:100221. DOI:
479 10.1074/jbc.RA120.016297.
- 480 33. Jin M, Gao D, Wang R, Sik A, Liu K. Possible involvement of
481 TGF β -SMAD-mediated epithelial-mesenchymal transition in pro-metastatic
482 property of PAX6. *Oncol Rep* 2020;44(2):555-564. DOI: 10.3892/or.2020.7644.
- 483 34. Anderson ED, Alishahedani ME, Myles IA. Epithelial-Mesenchymal Transition in Atopy:
484 A Mini-Review. *Front Allergy* 2020;1. DOI: 10.3389/falgy.2020.628381.
- 485 35. Zhang L, Zeng Y, Sun J. Progress of metabolomics in atopic dermatitis: a systematic
486 review. *J Dtsch Dermatol Ges* 2023;21(3):229-236. DOI: 10.1111/ddg.14960.
- 487 36. Choi GE, Han HJ. Glucocorticoid impairs mitochondrial quality control in neurons.
488 *Neurobiol Dis* 2021;152:105301. DOI: 10.1016/j.nbd.2021.105301.

- 489 37. Lopez-Alvarez J, Sevilla-Llewellyn-Jones J, Aguera-Ortiz L. Anticholinergic Drugs in
490 Geriatric Psychopharmacology. *Front Neurosci* 2019;13:1309. DOI:
491 10.3389/fnins.2019.01309.
- 492 38. Yadav M, Chaudhary PP, D'Souza BN, et al. Diisocyanates influence models of atopic
493 dermatitis through direct activation of TRPA1. *PLoS One* 2023;18(3):e0282569. DOI:
494 10.1371/journal.pone.0282569.
- 495 39. Panel AAJADG, Chu DK, Schneider L, et al. Atopic dermatitis (eczema) guidelines: 2023
496 American Academy of Allergy, Asthma and Immunology/American College of Allergy,
497 Asthma and Immunology Joint Task Force on Practice Parameters GRADE- and
498 Institute of Medicine-based recommendations. *Ann Allergy Asthma Immunol*
499 2024;132(3):274-312. DOI: 10.1016/j.anai.2023.11.009.
- 500 40. Chretien D, Benit P, Ha HH, et al. Mitochondria are physiologically maintained at close
501 to 50 degrees C. *PLoS Biol* 2018;16(1):e2003992. DOI: 10.1371/journal.pbio.2003992.

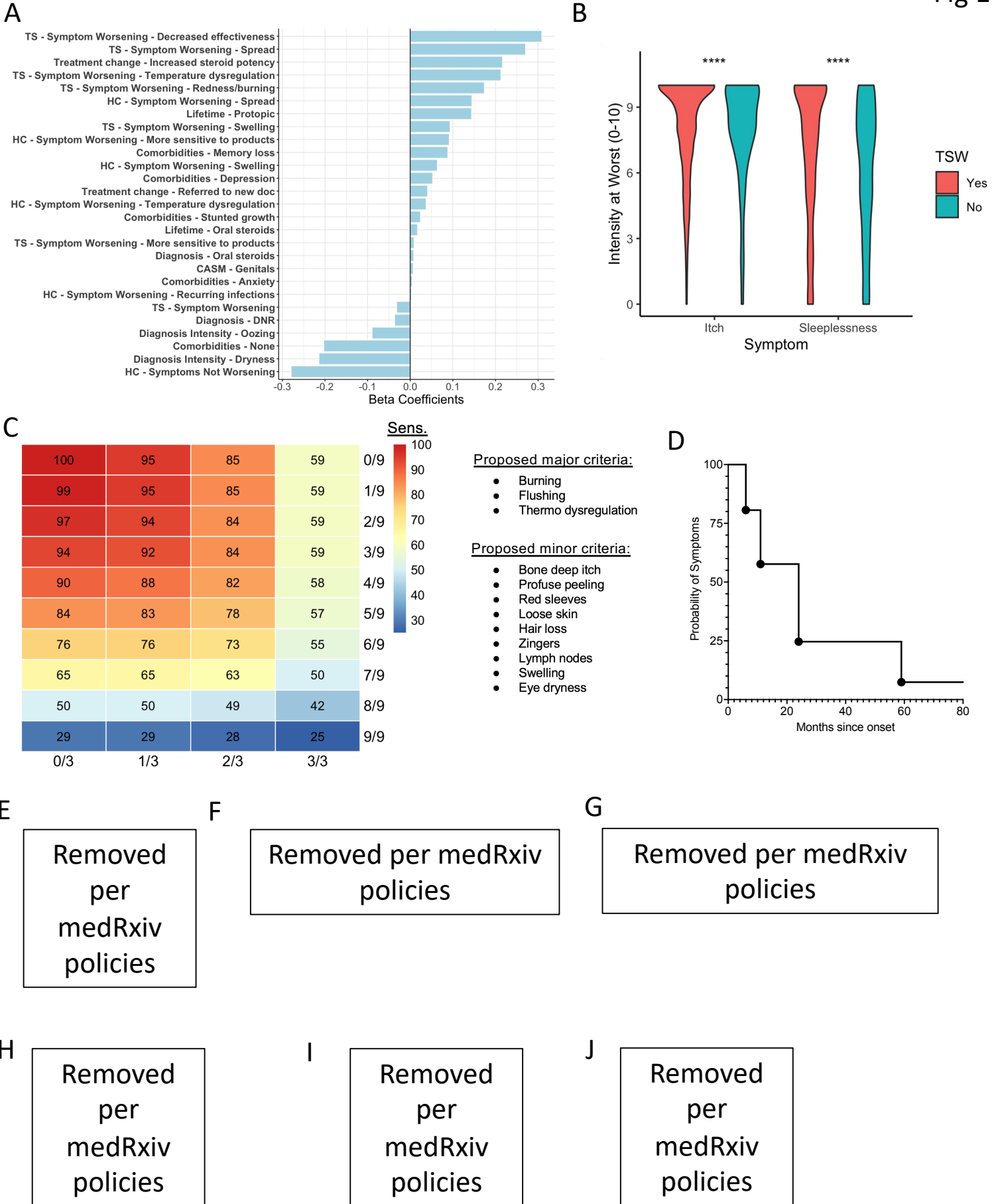
502

503

504

505

Fig 1



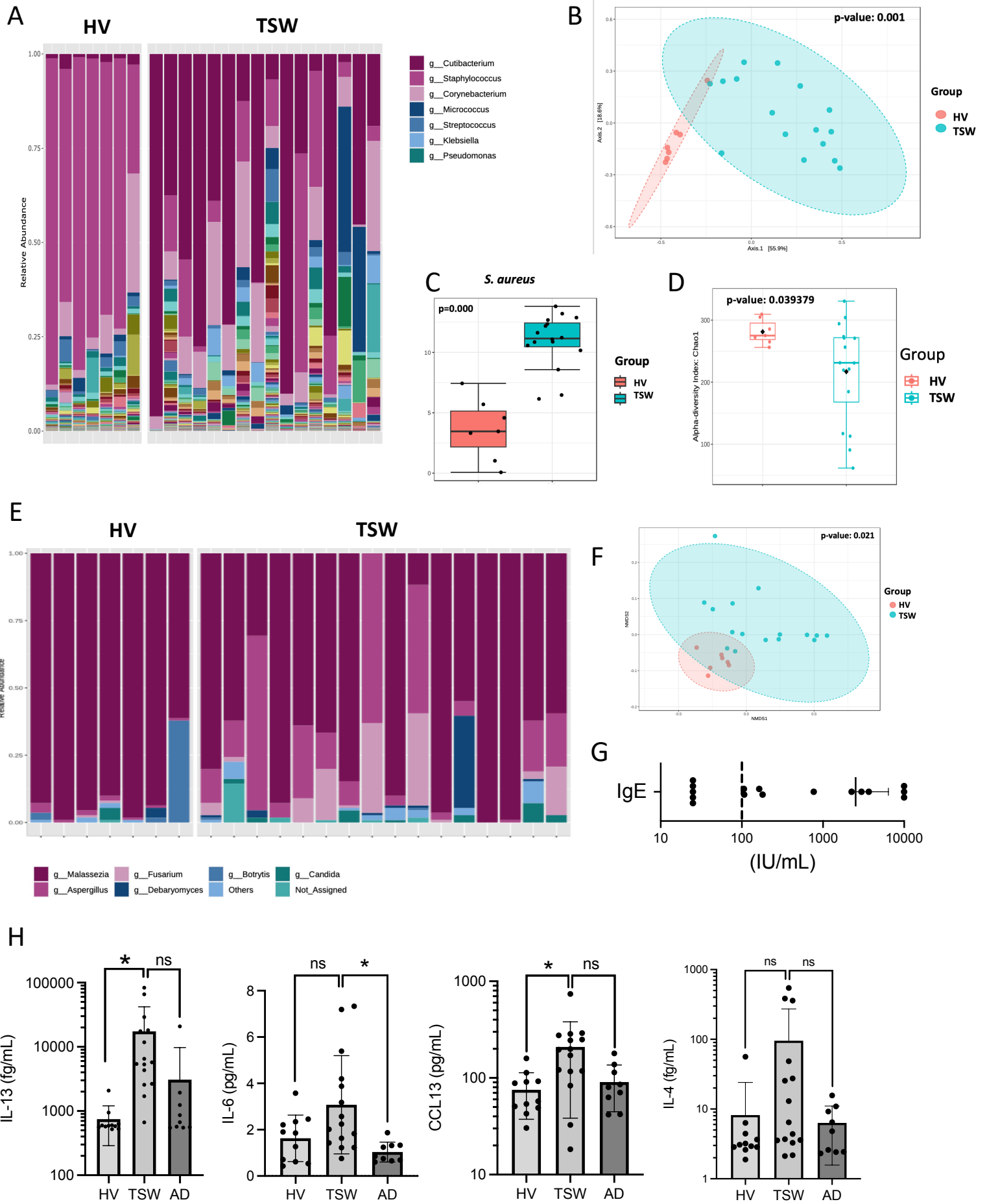
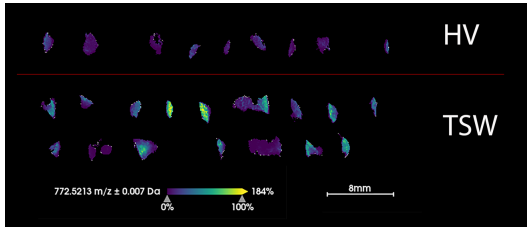
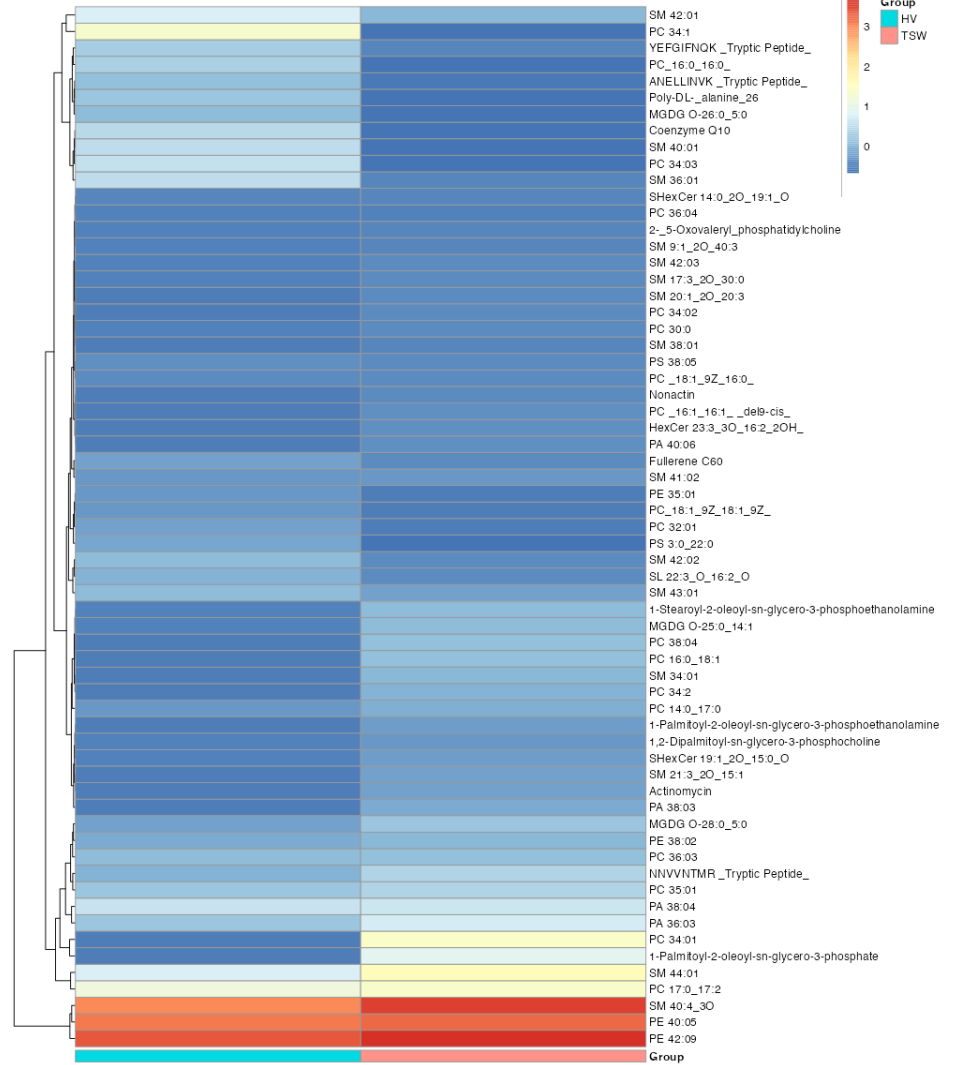


Fig 2

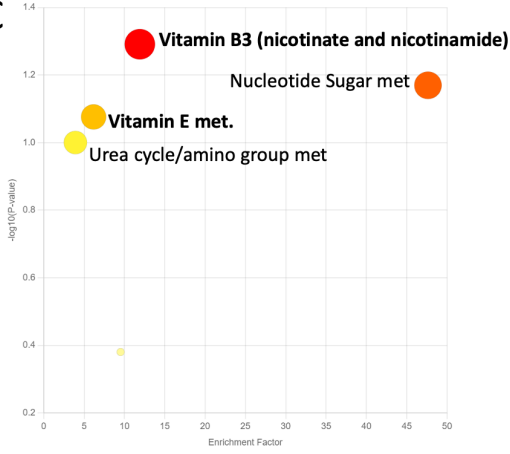
A



B



C



D

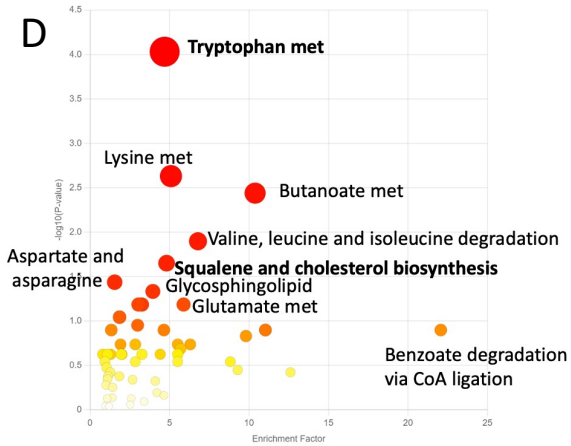
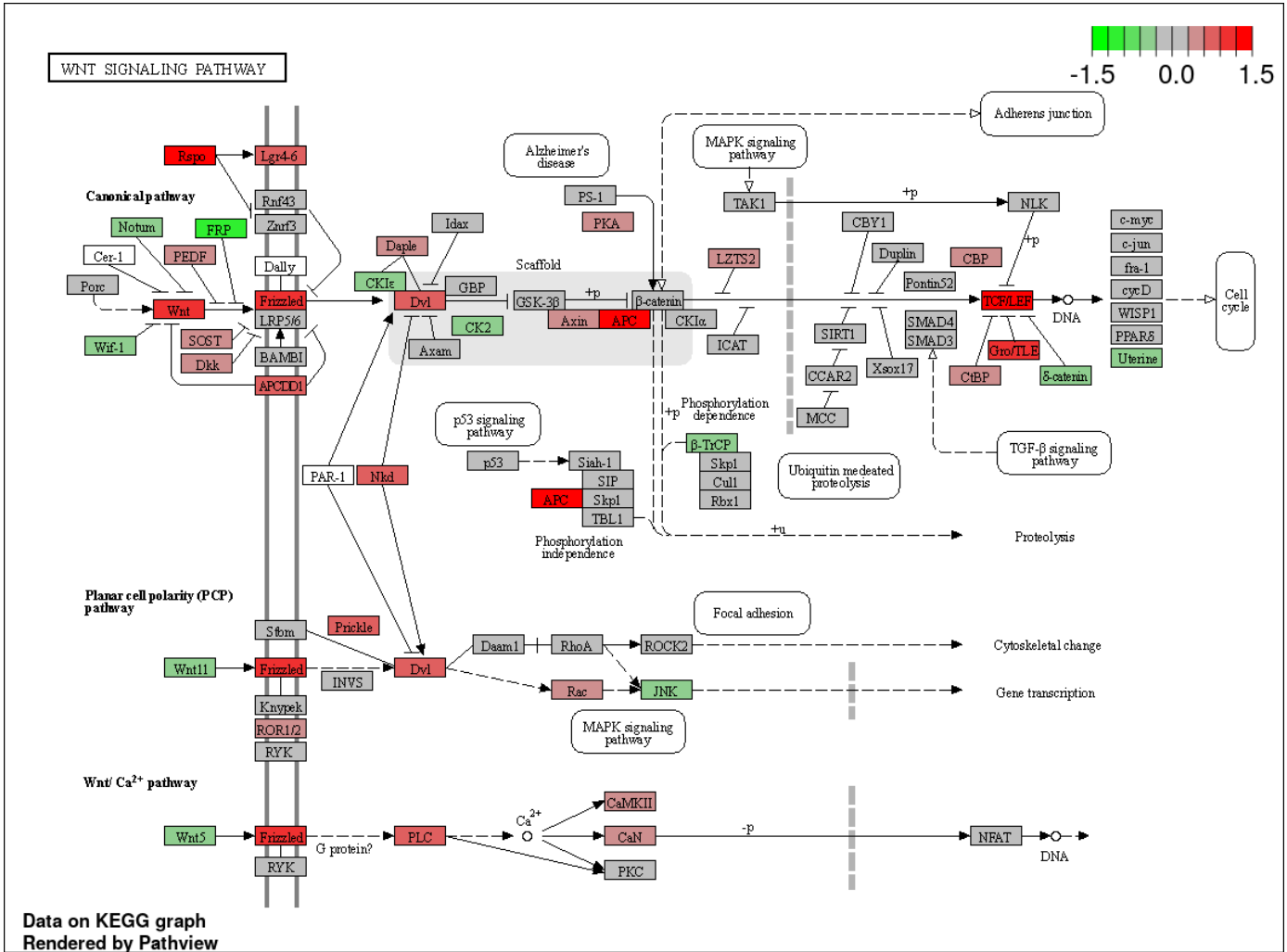
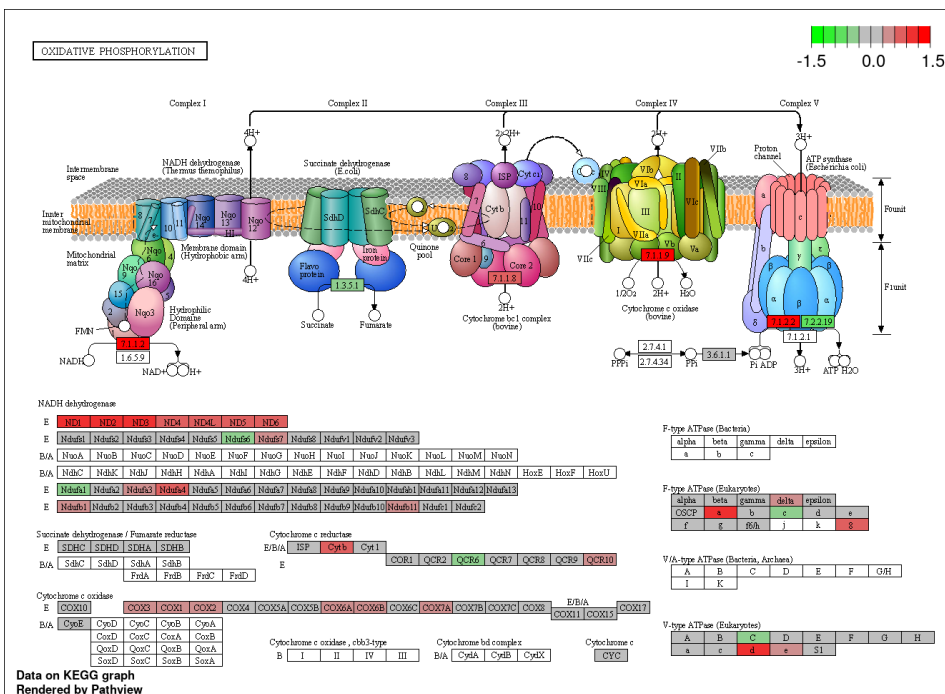


Fig 3

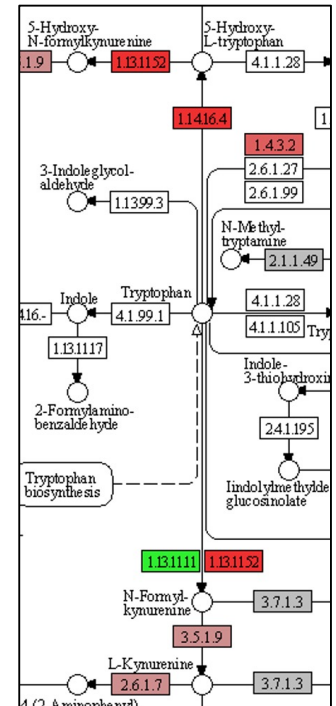
A



B



C



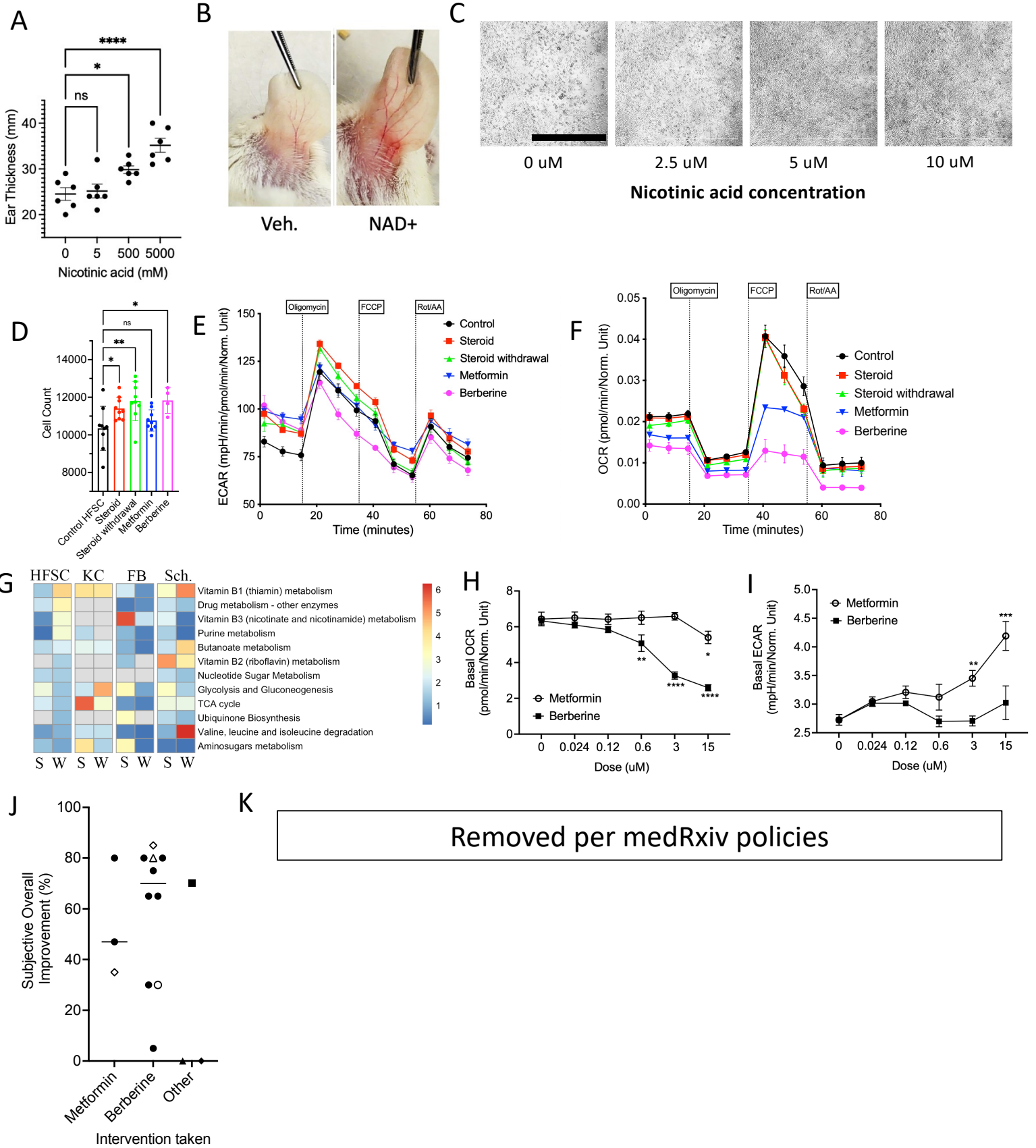


Fig 5