

1 **Premorbid predictors of a fatal initial presentation of coronary heart disease among post-**
2 **menopausal women**

3 SHORT TITLE: Predictors of fatal incident CHD in the WHI

4 Ming-Li Chen, MD, MS^{a,b}, Jin Li, PhD^{a,c}, Kruthika R. Iyer, PhD^{a,b,d}, Catherine Tcheandjieu,
5 PhD^{a,b,d}, Shirin Jimenez, MD^{a,e}, Elias Levy Itshak Salfati, PhD^{a,f}, Liana C. Del Gobbo, PhD^a,
6 Marcia L Stefanick, PhD^a, Manisha Desai^a, PhD, Xiaonan Xue, PhD^b, Themistocles L Assimes,
7 MD PhD^{a,b}

8 ^aDepartment of Medicine, Stanford University School of Medicine, Stanford, CA, USA

9 ^bPalo Alto VA Healthcare System, Palo Alto, CA, USA

10 ^cThermo Fisher Scientific, South San Francisco, CA, USA

11 ^dGladstone Institute of Data Science and Biotechnology, Gladstone Institutes, San Francisco,
12 CA, USA

13 ^eDepartment of Internal Medicine (Division of Cardiovascular Medicine), University of
14 California Davis Health, Davis, CA, USA

15 ^fScripps Research Translational Institute at Scripps Research, La Jolla, CA, USA

16 ^gDivision of Biostatistics, Department of Epidemiology & Population Health, Albert Einstein
17 College of Medicine, Bronx, New York, USA

18 **Address for correspondence:**

19 Themistocles L. Assimes, MD PhD

20 Palo Alto VA Hospital, 3801 Miranda Ave., Palo Alto, CA 94304

21 email: tassimes@stanford.edu

22 Total word count of the manuscript (including Title Page, Abstract, Text, References, Tables and
23 Figures Legends): 6317 (Text 3581)

24 **Abstract**

25 **Background:** Premorbid health traits that predispose to a fatal initial presentation of coronary
26 heart disease (CHD) remain poorly characterized.

27 **Methods:** We followed 148,230 post-menopausal participants in the Women's Health Initiative
28 for a median of 13.3 years. We ascertained the first occurrence of CHD and performed a joint
29 Cox multivariate regression to identify premorbid predictors for a fatal rather than a non-fatal
30 incident event.

31 **Results:** A total of 10,714 incident CHD events including 513 fatal events accrued during follow
32 up. A five-year increase in age, smoking 5 to 34 cigarettes per day, and a standard deviation (SD)
33 increase in the Cornell voltage product on electrocardiography each independently increased the
34 relative risk (RR) of dying from one's initial presentation of CHD by 46% (95% confidence
35 interval [CI], 35 to 58%), 30% (8 to 51%), and 17% (7 to 28%), respectively. A high level of
36 recreational physical activity (>1200 metabolic equivalent (MET) minutes per week) reduced
37 one's relative risk by 32% (12 to 49%). A significant dose-response effect was observed for both
38 physical activity and smoking and the reduction in absolute risk of presenting with fatal CHD
39 associated with a healthy lifestyle was roughly equivalent to the difference in risk observed
40 among women separated in age by approximately 10 years.

41 **Conclusions:** Modifiable factors affect a post-menopausal woman's risk of dying from her initial
42 presentation of CHD. Our findings may reduce case-fatality rates of CHD by motivating
43 individuals at risk to adopt and/or adhere to established primary prevention strategies.

44

45 **Key Words**

46 Coronary Heart Disease; Fatal Initial Presentation; Post-menopausal Women; Women’s Health
47 Initiative; Left Ventricular Mass; Electrocardiography; Modifiable Risk Factor; Smoking;
48 Physical activity; Aspirin.

49 **Clinical Perspective**

- 50 • What Is New? Older age, smoking, and increased left ventricular mass as estimated by
51 electrocardiography independently increase the risk of a fatal outcome with the initial
52 presentation of CHD, while physical activity and the use of aspirin reduced that risk.
- 53 • What Are the Clinical Implications? Modifiable risk factors related to lifestyle not only
54 protect against the occurrence of an initial presentation of CHD but also provide
55 additional protection against a fatal outcome during that event.

56

57 **Introduction**

58 Initial presentations of coronary heart disease (CHD) include stable angina, acute coronary
59 syndrome (ACS), and myocardial infarction (MI). A minority of subjects suffer a fatal
60 consequence from their initial presentation, but this outcome is arguably one of the most
61 devastating events encountered by patients, their family members, and healthcare providers.¹
62 Individuals dying from their initial presentation of CHD miss the opportunity to benefit from
63 well-established secondary prevention strategies that reduce the risk of recurrent events.²

64 Multiple studies have demonstrated a sustained decline in the overall rates of CHD over
65 the last few decades in developed countries.³ This decline comes on the heels of the
66 implementation of several primary and secondary prevention strategies.^{2,4} However, the decline
67 in the rates of fatal CHD has not been as steep as CHD overall.^{1,5} Some studies have shown that
68 the rate of fatal CHD has remained stable over time among subjects with no prior history of
69 CHD and may have even increased among elderly individuals.⁵ Furthermore, lifetime risks of
70 CHD and sudden cardiac death in the community remain high.^{6,7} These trends underscore the
71 need to identify premorbid predictors of a fatal outcome related to incident CHD.

72 The premorbid predictors for a fatal outcome with the initial presentation of CHD remain
73 poorly characterized. In the Cardiovascular Health Study (CHS), the only independent predictors
74 of fatal CHD outcomes among subjects with no prior history of CHD, MI, or CHF at baseline
75 were diabetes and age⁸. The study was limited by the small number of events, the narrow range
76 of age of elderly participants, and the lack of assessment of lifestyle factors. In this study, we
77 leveraged the large size and the prolonged follow-up of the Women's Health Initiative (WHI) in

78 combination with the repeated assessment of exposures and the careful adjudication of CHD
79 outcomes to document independent predictors of a fatal presentation of CHD more reliably.

80 **Methods**

81 **Study cohort**

82 A detailed description of study design, recruitment, and initial characterization for WHI has been
83 previously published.⁹⁻¹¹ The study cohort consisted of 148,230 participants enrolled in either
84 one of the clinical trials (n=63170) or the observational study (n=85060) between 1993 and 1998
85 with no history of atherosclerotic cardiovascular disease or congestive heart failure at baseline
86 (**Figure 1**). All participants were followed through 2010 and a subset of participants (n=88550)
87 with continued adjudication of CHD outcomes were further followed until 2015. The WHI
88 project was reviewed and approved by the Fred Hutchinson Cancer Research Center (Fred
89 Hutch) Institutional Review Board (IRB). Participants provided written informed consent to
90 participate. Additional consent to review medical records was obtained through signed written
91 consent.

92 **Outcome ascertainment**

93 The primary endpoints for this study were newly diagnosed CHD events including angina, non-
94 fatal myocardial infarction (MI), coronary revascularization through either a percutaneous
95 coronary intervention or coronary artery bypass grafting, and definitive death from CHD.
96 Adjudication methods for cardiovascular disease outcomes in the WHI have been previously
97 described extensively¹². The diagnosis of nonfatal MI was confirmed if data in the hospital
98 record met standardized criteria of diagnostic electrocardiographic changes, elevated cardiac
99 enzyme levels, or both. Treatment with coronary revascularization was confirmed by

100 documentation of the procedure in the medical record. Fatal CHD was considered confirmed if
101 there was documentation in the hospital or autopsy records or if coronary disease was listed as
102 the cause of death on the death certificate and evidence of previous coronary disease was
103 available. Adjudication of these events occurred for all participants through the clinical trial and
104 intervention phase (1993-2005) as well as the first extension (2005-2010). Adjudication of CHD
105 events during the second extension study (2010-2015) was restricted to a subset of participants in
106 the Medical Record Cohort (MRC). We considered all adjudicated events occurring within 28
107 days of the initial event in classifying whether the initial presentation was fatal or not fatal. Thus,
108 women who had a fatal event within 28 days of their initial non-fatal event were classified as
109 fatal events.

110 **Exposure Assessment**

111 Information on exposures was collected at baseline through an in-person clinic visit and through
112 multiple self-administered questionnaires that collected information on demographic factors
113 including age, race/ethnicity, education, income, medical history, physical activity (PA) levels,
114 smoking habits, and diet. Women who participated in any clinical trial also underwent a 12-lead
115 electrocardiogram (ECG). Additional self-administered questionnaires were collected regularly
116 during follow up allowing for repeated measures of medical history, medication use, PA levels,
117 and smoking habits. The data collection schedule during follow-up varied by cohort (clinical
118 trials vs. observational study) and by the study phase (intervention vs. observational phase).
119 Complete details on the collection schedule and the derivation of variables are provided in **Table**
120 **S1**.

121 We used the medication inventory to document the use of aspirin, statins, beta-blockers,
122 calcium channel blockers (CCBs), inhibitors of the renin-angiotensin system (RAS), and
123 diuretics. Participant's level of PA was categorized into four groups based on weekly energy
124 expenditure in metabolic equivalents (MET) minutes.¹³ In addition to typical ECG intervals, we
125 tested several derived ECG variables related to left ventricular mass/hypertrophy and ECG
126 abnormalities indicating possible subclinical MI/Ischemia or bradycardia. Through six ancillary
127 studies, a subset of all WHI participants underwent genome-wide genotyping followed by joint
128 imputation to the 1000G reference panel (dbGaP study accession: phs000746.v1.p3) We used
129 this data to construct a previously validated genetic risk score for CHD (metaGRS) consisting of
130 genetic variants summarizing a participant's exposure to high-risk variants at 1.7 million
131 polymorphic sites¹⁴. We restricted the metaGRS analysis to non-Hispanic white participants
132 given the score was constructed using almost exclusively a non-Hispanic white population and
133 has been shown to perform best in the same population¹⁴. Through separate ancillary studies,
134 seven blood-based biomarkers related to cardiovascular disease were measured using
135 standardized assays in a subset of WHI participants including high density lipoprotein
136 concentration (HDL), low density lipoprotein concentration (LDL), triglycerides, creatinine,
137 insulin, glucose, and high sensitivity C-reactive protein (hsCRP). Complete details of exposure
138 assessment are in **Supplemental Material**.

139 **Statistical Analyses**

140 We used a joint multivariate Cox model to estimate the hazard ratio of a predictor of
141 interest with each of the two subtypes of presentation of incident CHD, fatal and non-fatal,
142 simultaneously.¹⁵⁻¹⁸ More extensive details on the statistical modeling implemented is provided

143 in the **Supplemental Material**. Predictors of interest were included in a multivariate model if
144 they demonstrated a significant association with CHD in a minimally adjusted model that
145 included age and race. Among the predictors of interest, we modeled body mass index (BMI),
146 systolic blood pressure (SBP), smoking status, amount of weekly recreational physical activity,
147 treated hypertension, treated diabetes, and class of medication use as time-dependent covariates
148 while the other risk factors measured at baseline were modeled as time-fixed covariates. For
149 main analyses, missingness of covariates were imputed with multiple imputation method, using
150 linear mixed effect where covariates were modeled mostly as random effect, resulting in a
151 predicted value close to the predicted value of the missing sample^{19,20}. We corrected for multiple
152 testing of predictors included in the multivariate model using the Benjamini-Hochberg method
153 and a false discovery rate (FDR) of 0.05²¹. Lastly, we further performed subgroup analyses
154 limited to the subsets of participants with ECG measures, blood biomarkers, and genetic data.
155 These variables were tested by adding them last to the main model containing the covariates
156 included in the main analyses.

157 Next, we used the same joint multivariate Cox model to estimate the probability of i.
158 developing incident non-fatal CHD over a follow up period of 20 years and ii. the probability of
159 a fatal incident CHD event taking into consideration the competing risk of a non-fatal CHD
160 event. We calculated and compared these hazard functions for women at different ages and with
161 various combination of exposures of interest based on the results of our multivariate analysis.

162 All analyses were performed using R.

163 **Results**

164 A total of 10201 non-fatal and 513 fatal incident CHD events accrued among 148,230
165 participants during a median follow-up time of 13.3 years for an overall incident CHD rate of
166 7.2% and a case-fatality rate of 5.0% (**Figure 1, Table 1**). Compared to women with no events,
167 women with an incident CHD event during follow up were older, had a lower socioeconomic
168 status, more often were current smokers, and had a lower degree of recreational physical activity
169 (PA) at baseline (**Table 1**). Women with CHD events also had a higher BMI and blood pressure,
170 as well as a higher prevalence of treated hypertension and treated diabetes. Lastly, women with
171 CHD events also had a higher use of aspirin, statins, beta-blockers, calcium channel blockers,
172 renin-angiotensin inhibitors, and thiazide-like diuretics (**Table 1**).

173 Our statistically most significant predictor of a fatal outcome at the time of an incident
174 CHD event was age (**Table 2**). For each five-year increase in age, women were at a substantially
175 increased risk for both fatal and non-fatal initial presentations of CHD. However, the increase in
176 the risk for a fatal presentation was 46% greater (95% Confidence interval [CI] 35% to 58%)
177 than that observed for a non-fatal presentation (**Table 2**).

178 Our second statistically most significant predictor of a fatal outcome at the time of
179 incident CHD was aspirin use (**Table 2**). Women who took aspirin and developed a CHD event
180 in WHI had a 31% (95% CI: 16 to 44%) lower risk of dying from their initial presentation of
181 CHD than women who did not take aspirin (**Table 2**). Women taking aspirin, statins, beta-
182 blockers, and CCBs had a highly significant increased risk of non-fatal CHD ranging from 19 to
183 32% (**Table 2**). Similar hazard ratios for fatal CHD were observed with the use of beta-blockers
184 and CCBs.

185 Our third statistically most significant predictor was smoking (**Table 2, Figure 2A,2C**).
186 The relative hazard ratio of fatal vs. non-fatal CHD outcomes was similar for women reporting
187 5-14, 15-24, and 25-34 cigarettes per day. Thus, these exposure groups were combined. Women
188 who smoked within a range of 5 to 34 cigarettes/day (weighted average of ~16 cigs/day) suffered
189 from an increase in the risk of both fatal and non-fatal initial presentations of CHD when
190 compared to women who were non-smokers. However, the increase in risk for a fatal
191 presentation was 28% greater (95% CI: 5% to 56%) than that observed for a non-fatal
192 presentation (**Figure 2C**). Women with higher levels of smoking also observed a greater increase
193 in the risk of fatal events compared to non-fatal events, with a ~14% greater increase (95% CI: 4
194 to 23%) of risk observed per increasing level of smoking (**Table 2**).

195 Our fourth statistically most significant predictor was recreational physical activity (PA)
196 (**Table 2, Figure 2B, 2D**). Women reporting a high amount of PA benefited from a reduction in
197 the risk of both fatal and non-fatal initial presentations of CHD when compared to sedentary
198 women. However, the reduction in risk for a fatal presentation was 36% greater than that
199 observed for a non-fatal presentation (**Figure 2D**). Women with intermediate levels of PA also
200 observed a greater reduction in the risk of fatal events compared to non-fatal events, with a 16%
201 greater reduction of risk observed per increasing level of PA (**Table 2**).

202 Next, we analyzed subgroups of women with ECG measures, blood biomarkers, and
203 genetic data. Summary statistics of all the ECG measurements at baseline are provided in **Table**
204 **S3**. Due to high correlation, we excluded a subset of ECG measurements from our analyses
205 (**Table S4**). Two predictors were significant at an FDR<0.05. Both were measures related to the
206 baseline ECG. The most significant predictor was the Cornell voltage product, a measure that
207 correlates with left ventricular mass on echocardiography (**Table S5**)²². The increase in risk for a

208 fatal presentation was 17% (95% CI: 7 to 28%) greater than that observed for a non-fatal
209 presentation per one SD increase in the Cornell Voltage product. Similar magnitude of increased
210 risk was observed for the QRS duration (17%, 95% CI: 6 to 29%) (**Table S5**). We found no
211 difference in the risk of dying from the initial presentation of CHD associated with a widely
212 validated polygenic risk score (meta-GRS), LDL, HDL, triglycerides, creatinine, hs-CRP, and
213 heart rate.

214 We estimated the cumulative probability of presenting with an incident CHD event that
215 was fatal over 20 years of follow up for women aged 55, 65, and 75 years at baseline to be 0.1%,
216 0.37%, and 1.2%, respectively, for women with a healthy lifestyle (no smoking and > 1200 MET
217 min/week of PA) and 0.4%, 1.3%, and 4.1% for women with an unhealthy lifestyle (smoking 35
218 to 44 cigarettes/day and < 100 MET min/week of PA) (**Figure 3a, Table S6**). The analogous
219 cumulative probabilities for presenting with a non-fatal incident CHD event were 3.7%, 5.8%,
220 and 9.1% for a healthy lifestyle and 6.0%, 9.4%, and 14.4% for an unhealthy lifestyle (**Table**
221 **S6**). Taking aspirin reduced the probability of fatal-CHD from 1.2% to 1.0% among 75-year
222 women with a healthy lifestyle and 4.1% to 3.3% among women with an unhealthy lifestyle
223 (**Figure 3b, Table S6**). However, the analogous cumulative probabilities for non-fatal CHD
224 increased from 9.1% to 10.7%, and from 14.4% to 17.0%, among women aged 75 years with a
225 healthy and an unhealthy lifestyle, respectively (**Table S6**). Overall, the ratio of fatal to total
226 (fatal and non-fatal) presentations of CHD decreased from 6.1% to 2.9% for 55-year-old women
227 with a healthy lifestyle compared to women with an unhealthy lifestyle (**Table S6**). Analogous
228 reductions in this ratio for women aged 65 and 75 at baseline were 12.0% to 6.0% and 22.3% to
229 11.9%, respectively (**Table S6**). The use of aspirin among 75-year-old women decreased this

230 ratio from 11.9% to 8.5% among 75-year-old women with a healthy lifestyle and from 22.3% to
231 16.4% for women with an unhealthy lifestyle (**Table S6**).

232 **Discussion**

233 We conducted to our knowledge the largest study to date of the premorbid predictors of the mode
234 of presentation of CHD by leveraging data collected from the largest and longest-running cohort
235 study of post-menopausal women in the United States. We summarize our findings thematically
236 around four key observations.

237 First, we found older age, physical activity, smoking, aspirin use, and two ECG-derived
238 measures (Cornell Voltage as a proxy for LV hypertrophy/mass and QRS duration) to be
239 independent predictors of a fatal outcome among participants suffering their first-ever CHD
240 event. While the findings for age and LVH are consistent with previously published findings, the
241 remaining associations have not been previously reported in this specific context. The
242 association between a prolonged QRS and a fatal outcome is plausible given a common cause of
243 such prolongations is coronary artery disease²³⁻²⁶. Thus, these measures may be serving as
244 markers of advanced subclinical CHD²³⁻²⁶. These prolongations may also be predisposing to fatal
245 arrhythmic events in the setting of ACSs²³⁻²⁶. Importantly, the non-ECG associations involve
246 highly modifiable risk factors which have the potential to profoundly affect the case-fatality rate
247 of incident CHD if they are optimally embraced at the population level.

248 Second, we could not replicate diabetes as an independent risk factor for an elevated
249 short term (<28 days) case-fatality rate of CHD as was observed in the CHS study⁸ despite
250 diabetes roughly doubling the risk of both incident and fatal CHD in WHI. To explain this
251 discrepancy, we note that follow up and events for CHS accrued during the late 1980s and early

252 1990s while for WHI they accrued during the late 1990s, 2000s, and early 2010s. During this
253 time, multiple other studies of cohorts in Finland, Germany, and Australia²⁷⁻²⁹ have shown
254 substantial reductions in the case-fatality rates among subjects with and without diabetes
255 including one study showing diabetes was no longer a predictor of increased case-fatality rate by
256 2010²⁹. Differences in other demographic and clinical characteristics between CHS and WHI
257 including baseline age distribution, prevalence and severity of diabetes, and education status²⁸
258 may have also decreased power to detect this association. For example, the baseline prevalence
259 of diabetes in CHS was 25.2%⁸ while it was only 3.6% in WHI.

260 Third, we found a healthy lifestyle at baseline (defined as no smoking and > 1200 MET
261 min/week of PA) when compared to an unhealthy lifestyle (smoking 35 to 44 cigarettes/day and
262 < 100 MET min/week of PA) to be associated with a reduction in the cumulative probability of
263 dying from one's initial presentation of CHD equivalent to the reduction observed among groups
264 of women separate by an approximately a decade in age. The effect of aspirin on lowering this
265 risk was not as pronounced but still significant for all post-menopausal women.

266 Lastly, we note that probability of dying from initial presentation of CHD had a more
267 rapid rate of increase relative to the probability of presenting with a non-fatal CHD over time,
268 leading to an increasing absolute difference in the probability of dying from the initial
269 presentation of CHD over time. This increasing difference became particularly evident in the
270 second decade of follow-up. Thus, a healthy lifestyle at baseline is associated with a larger
271 protection from a fatal incident CHD event late in life.

272 Strengths of our study include the long duration of follow-up, the availability of a very
273 large number of carefully adjudicated incident fatal and non-fatal CHD events, and the repeated
274 assessment of multiple exposures. Our baseline cohort produced over seven times the number of

275 incident fatal CHD outcomes compared to the CHS study⁸. Our time-dependent analyses using a
276 joint Cox model allowed us to optimally model the short-term effects of multiple exposures such
277 as physical activity, smoking, and medications.

278 The limitations of this study should be considered carefully. First, our analysis of the
279 most used classes of cardiovascular drugs was disadvantaged by the presence of confounding by
280 indication given prior clinical trials have unequivocally established the protective effects of
281 aspirin and statins on the risk of incident CHD³⁰. This type of confounding is common in
282 observational studies reporting on the intended effects of pharmacological therapies and often
283 cannot be corrected through covariate adjustment³¹. However, this confounding may be
284 minimized or even eliminated when estimating the difference in risk reduction between fatal and
285 non-fatal CHD events if it is in the same direction, and present to an equal degree, for both types
286 of outcomes. Furthermore, the protective effect observed against fatal outcomes is biologically
287 plausible given aspirin's established role in limiting the extent of occlusive thrombosis that
288 follows a plaque rupture. Second, we examined only post-menopausal women. We suspect that
289 our findings do generalize to other populations although further study in large cohorts is needed
290 to definitively prove this hypothesis. Third, we had reduced power to detect differences in the
291 hazard ratios between fatal and non-fatal presentations of disease for our assessment of
292 biomarkers and genetic risk. These risk factors need to be further examined in other large cohorts
293 before definitive conclusions can be made. Fourth, no systematic assessment of LV function was
294 available in WHI making it impossible to compare our results to the CHS in this respect⁸.
295 However, routine assessment of LV function in asymptomatic individuals is not recommended
296 for risk stratification. Lastly, we could not adjust for in hospital treatments that may have
297 influenced case-fatality rates of CHD such as time from symptom onset of ACS to hospital

298 presentation for thrombolytic therapy or primary coronary intervention, as such information was
299 not collected by WHI¹². Older age, diabetes, and smoking have been linked to prehospital delays
300 involving ACSs and may be contributing to our observed results³². We note that smoking has
301 been associated with a shorter prehospital delay perhaps due to the widely publicized link
302 between smoking and the risk of CHD³². Thus, the increased risk of fatal presentation we
303 observed for smoking may be an underestimate of the true effect.

304 Our analysis yields three insights within the framework of existing evidence and
305 prevention protocols. First, the American Heart Association recommends either 150 minutes of
306 moderate-intensity aerobic PA per week or 75 minutes of vigorous PA per week for the
307 maintenance of optimal cardiovascular health. These levels of PA translate to ~750 MET
308 minutes per week. However, more extensive health benefits have been observed with additional
309 PA³³. Our findings suggest that higher levels of aerobic PA will have a more profound beneficial
310 effect on a woman's chances of dying from an incident CHD event. Second, we note that despite
311 an established monotonic increase in the risk of CHD between individuals who smoke five and
312 individuals who smoke 30 cigarettes per day³⁴, the benefit we observed with respect to fatal
313 outcomes over non-fatal outcomes in this range was relatively flat. Thus, our findings suggest
314 that even smoking lightly disproportionately increases a woman's risk of dying from her initial
315 CHD event. Third, the use of aspirin in the primary prevention of CHD has been controversial
316 with the most recent statement recommending the potential use for individuals aged 40-59 years
317 of age with a >10% 10-year risk of atherosclerotic cardiovascular disease³⁵. However, these
318 recommendations consider the elevated risk of bleeding associated with aspirin use³⁵. We did not
319 examine bleeding side effects in this study but still provide evidence that the risk of dying from
320 one's initial presentation of CHD is reduced with the use of aspirin.

321 **Conclusions**

322 In conclusion, our study found that older age, smoking, and two ECG-related measures including
323 LVH and prolonged QRS increased the risk of dying from a first ever presentation of CHD,
324 while physical activity and aspirin reduced this risk. This information may be used as an
325 effective motivator for women to optimize their lifestyle and significantly reduce their overall
326 risk of CHD but also their chances of dying from their initial event. These benefits are likely to
327 extend to other populations including pre-menopausal women and men, but further study is
328 needed to prove this hypothesis more definitively.

329 **Acknowledgements**

330 We acknowledge the contributions of the following past and present key WHI investigators:

331 **Program Office:** (National Heart, Lung, and Blood Institute, Bethesda, Maryland) Jacques

332 Rossouw, Shari Ludlam, Joan McGowan, Leslie Ford, and Nancy Geller

333 **Clinical Coordinating Center:** (Fred Hutchinson Cancer Research Center, Seattle, WA) Garnet

334 Anderson, Ross Prentice, Andrea LaCroix, and Charles Kooperberg

335 **Investigators and Academic Centers:** (Brigham and Women's Hospital, Harvard Medical

336 School, Boston, MA) JoAnn E. Manson; (MedStar Health Research Institute/Howard University,

337 Washington, DC) Barbara V. Howard; (Stanford Prevention Research Center, Stanford, CA)

338 Marcia L. Stefanick; (The Ohio State University, Columbus, OH) Rebecca Jackson; (University

339 of Arizona, Tucson/Phoenix, AZ) Cynthia A. Thomson; (University at Buffalo, Buffalo, NY)

340 Jean Wactawski-Wende; (University of Florida, Gainesville/Jacksonville, FL) Marian Limacher;

341 (University of Iowa, Iowa City/Davenport, IA) Jennifer Robinson; (University of Pittsburgh,

342 Pittsburgh, PA) Lewis Kuller; (Wake Forest University School of Medicine, Winston-Salem,
343 NC) Sally Shumaker; (University of Nevada, Reno, NV) Robert Brunner
344 **Women’s Health Initiative Memory Study:** (Wake Forest University School of Medicine,
345 Winston-Salem, NC) Mark Espeland

346 **Sources of Funding**

347 The WHI program is funded by the National Heart, Lung, and Blood Institute, National Institutes
348 of Health, U.S. Department of Health and Human Services through contracts 75N92021D00001,
349 75N92021D00002, 75N92021D00003, 75N92021D00004, 75N92021D00005.

350 **Role of the funding source**

351 The funding agency had no role in study design, data collection, analysis, or writing of this
352 report. The corresponding author had full access to the study data and final responsibility for the
353 decision to submit for publication.

354 **Data availability Statement**

355 Qualified investigators may gain access to the WHI data through the WHI data coordinating
356 center after securing approval of a paper proposal as described here
357 <https://www.whi.org/propose-a-paper>. Data is also accessible through BiolinC at
358 https://biolincc.nhlbi.nih.gov/studies/whi_ctos/ and through dbGAP at
359 https://www.ncbi.nlm.nih.gov/projects/gap/cgi-bin/study.cgi?study_id=phs000200.v12.p3 The
360 1000G reference panel used for joint imputation can be accessed through
361 https://www.ncbi.nlm.nih.gov/projects/gap/cgi-bin/study.cgi?study_id=phs000746.v1.p3 .

362

363 **Conflict of Interest**

364 Nothing to disclose.

Reference

1. Rosamond WD, Chambless LE, Heiss G, Mosley TH, Coresh J, Whitsel E, Wagenknecht L, Ni H, Folsom AR. Twenty-two-year trends in incidence of myocardial infarction, coronary heart disease mortality, and case fatality in 4 US communities, 1987-2008. *Circulation*. 2012;125:1848-1857. doi: 10.1161/CIRCULATIONAHA.111.047480
2. Smith SC, Jr., Benjamin EJ, Bonow RO, Braun LT, Creager MA, Franklin BA, Gibbons RJ, Grundy SM, Hiratzka LF, Jones DW, et al. AHA/ACCF Secondary Prevention and Risk Reduction Therapy for Patients with Coronary and other Atherosclerotic Vascular Disease: 2011 update: a guideline from the American Heart Association and American College of Cardiology Foundation. *Circulation*. 2011;124:2458-2473. doi: 10.1161/CIR.0b013e318235eb4d
3. Benjamin EJ, Blaha MJ, Chiuve SE, Cushman M, Das SR, Deo R, de Ferranti SD, Floyd J, Fornage M, Gillespie C, et al. Heart Disease and Stroke Statistics-2017 Update: A Report From the American Heart Association. *Circulation*. 2017;135:e146-e603. doi: 10.1161/CIR.0000000000000485
4. Ridker PM, Libby P, Buring JE. Risk Markers and the Primary Prevention of Cardiovascular Disease. In: Mann DL, Zipes DP, Libby P, Bonow RO, Braunwald E, eds. *Braunwald's heart disease : a textbook of cardiovascular medicine*. Philadelphia, PA: Elsevier/Saunders; 2015:891-933.
5. Levitan EB, Tanner RM, Zhao H, Muntner P, Thacker EL, Howard G, Glasser SP, Bittner V, Farkouh ME, Rosenson RS, et al. Secular changes in rates of coronary heart disease, fatal coronary heart disease, and out-of-hospital fatal coronary heart disease. *Int J Cardiol*. 2014;174:436-439. doi: 10.1016/j.ijcard.2014.04.027
6. Vasan RS, Enserro DM, Xanthakis V, Beiser AS, Seshadri S. Temporal Trends in the Remaining Lifetime Risk of Cardiovascular Disease Among Middle-Aged Adults Across 6 Decades: The Framingham Study. *Circulation*. 2022;145:1324-1338. doi: 10.1161/CIRCULATIONAHA.121.057889
7. Bogle BM, Ning H, Mehrotra S, Goldberger JJ, Lloyd-Jones DM. Lifetime Risk for Sudden Cardiac Death in the Community. *J Am Heart Assoc*. 2016;5. doi: 10.1161/JAHA.115.002398
8. Pearte CA, Furberg CD, O'Meara ES, Psaty BM, Kuller L, Powe NR, Manolio T. Characteristics and baseline clinical predictors of future fatal versus nonfatal coronary heart disease events in older adults: the Cardiovascular Health Study. *Circulation*. 2006;113:2177-2185. doi: 10.1161/CIRCULATIONAHA.105.610352
9. Anderson GL, Manson J, Wallace R, Lund B, Hall D, Davis S, Shumaker S, Wang CY, Stein E, Prentice RL. Implementation of the Women's Health Initiative study design. *Ann Epidemiol*. 2003;13:S5-17.
10. Design of the Women's Health Initiative clinical trial and observational study. The Women's Health Initiative Study Group. *Controlled clinical trials*. 1998;19:61-109.
11. Hays J, Hunt JR, Hubbell FA, Anderson GL, Limacher M, Allen C, Rossouw JE. The Women's Health Initiative recruitment methods and results. *Ann Epidemiol*. 2003;13:S18-77. doi: 10.1016/s1047-2797(03)00042-5

12. Curb JD, McTiernan A, Heckbert SR, Kooperberg C, Stanford J, Nevitt M, Johnson KC, Proulx-Burns L, Pastore L, Criqui M, et al. Outcomes ascertainment and adjudication methods in the Women's Health Initiative. *Ann Epidemiol*. 2003;13:S122-128. doi: 10.1016/s1047-2797(03)00048-6
13. Sims ST, Kubo J, Desai M, Bea J, Beasley JM, Manson JE, Allison M, Seguin RA, Chen Z, Michael YL, et al. Changes in physical activity and body composition in postmenopausal women over time. *Med Sci Sports Exerc*. 2013;45:1486-1492. doi: 10.1249/MSS.0b013e31828af8bd
14. Inouye M, Abraham G, Nelson CP, Wood AM, Sweeting MJ, Dudbridge F, Lai FY, Kaptoge S, Brozynska M, Wang T, et al. Genomic Risk Prediction of Coronary Artery Disease in 480,000 Adults: Implications for Primary Prevention. *J Am Coll Cardiol*. 2018;72:1883-1893. doi: 10.1016/j.jacc.2018.07.079
15. Lunn M, McNeil D. Applying Cox regression to competing risks. *Biometrics*. 1995;51:524-532.
16. Glynn RJ, Rosner B. Comparison of risk factors for the competing risks of coronary heart disease, stroke, and venous thromboembolism. *Am J Epidemiol*. 2005;162:975-982. doi: 10.1093/aje/kwi309
17. Putter H, Fiocco M, Geskus RB. Tutorial in biostatistics: competing risks and multi-state models. *Stat Med*. 2007;26:2389-2430. doi: 10.1002/sim.2712
18. Chatterjee N, Sinha S, Diver WR, Feigelson HS. Analysis of cohort studies with multivariate and partially observed disease classification data. *Biometrika*. 2010;97:683-698. doi: 10.1093/biomet/asq036
19. Bartlett JW, Seaman SR, White IR, Carpenter JR. Multiple imputation of covariates by fully conditional specification: Accommodating the substantive model. *Stat Methods Med Res*. 2015;24:462-487. doi: 10.1177/0962280214521348
20. van Buuren S, Groothuis-Oudshoorn K. mice: Multivariate Imputation by Chained Equations in R. *Journal of Statistical Software*. 2011;45:1 - 67. doi: 10.18637/jss.v045.i03
21. Benjamini Y, Hochberg Y. Controlling the False Discovery Rate - a Practical and Powerful Approach to Multiple Testing. *J R Stat Soc B*. 1995;57:289-300. doi: DOI 10.1111/j.2517-6161.1995.tb02031.x
22. Okin PM, Roman MJ, Devereux RB, Kligfield P. Electrocardiographic identification of increased left ventricular mass by simple voltage-duration products. *J Am Coll Cardiol*. 1995;25:417-423. doi: 10.1016/0735-1097(94)00371-v
23. Chatterjee NA. Prediction of Sudden Cardiac Death: Looking Beyond Ejection Fraction. *Curr Cardiol Rep*. 2023. doi: 10.1007/s11886-023-01871-0
24. Desai AD, Yaw TS, Yamazaki T, Kaykha A, Chun S, Froelicher VF. Prognostic Significance of Quantitative QRS Duration. *Am J Med*. 2006;119:600-606. doi: 10.1016/j.amjmed.2005.08.028
25. Davey P. QT interval and mortality from coronary artery disease. *Prog Cardiovasc Dis*. 2000;42:359-384. doi: 10.1053/pcad.2000.0420359
26. Kramer B, Brill M, Bruhn A, Kubler W. Relationship between the degree of coronary artery disease and of left ventricular function and the duration of the QT-interval in ECG. *European heart journal*. 1986;7:14-24. doi: 10.1093/oxfordjournals.eurheartj.a061951

27. Winell KM, Pääkkönen R, Pietilä A, Niemi MK, Reunanen AR, Salomaa VV. Case fatality rates after first acute coronary syndrome in persons treated for type 2 diabetes show an improving trend. *Diabetologia*. 2010;53:472-480. doi: 10.1007/s00125-009-1606-2
28. Icks A, Claessen H, Kirchberger I, Heier M, Peters A, Trentinaglia I, Giani G, von Scheidt W, Meisinger C. Mortality after first myocardial infarction in diabetic and non-diabetic people between 1985 and 2009. The MONICA/KORA registry. *Eur J Epidemiol*. 2014;29:899-909. doi: 10.1007/s10654-014-9964-6
29. Nedkoff L, Knuiman M, Hung J, Briffa TG. Improving 30-day case fatality after incident myocardial infarction in people with diabetes between 1998 and 2010. *Heart*. 2015;101:1318-1324. doi: 10.1136/heartjnl-2015-307627
30. Karmali KN, Lloyd-Jones DM, Berendsen MA, Goff DC, Jr., Sanghavi DM, Brown NC, Korenovska L, Huffman MD. Drugs for Primary Prevention of Atherosclerotic Cardiovascular Disease: An Overview of Systematic Reviews. *JAMA Cardiol*. 2016;1:341-349. doi: 10.1001/jamacardio.2016.0218
31. Bosco JL, Silliman RA, Thwin SS, Geiger AM, Buist DS, Prout MN, Yood MU, Haque R, Wei F, Lash TL. A most stubborn bias: no adjustment method fully resolves confounding by indication in observational studies. *J Clin Epidemiol*. 2010;63:64-74. doi: 10.1016/j.jclinepi.2009.03.001
32. Gärtner C, Walz L, Bauernschmitt E, Ladwig KH. The causes of prehospital delay in myocardial infarction. *Dtsch Arztebl Int*. 2008;105:286-291. doi: 10.3238/arztebl.2008.0286
33. Shiroma EJ, Lee IM. Physical activity and cardiovascular health: lessons learned from epidemiological studies across age, gender, and race/ethnicity. *Circulation*. 2010;122:743-752. doi: 10.1161/CIRCULATIONAHA.109.914721
34. Law MR, Wald NJ. Environmental tobacco smoke and ischemic heart disease. *Prog Cardiovasc Dis*. 2003;46:31-38. doi: 10.1016/s0033-0620(03)00078-1
35. Davidson KW, Barry MJ, Mangione CM, Cabana M, Chelmow D, Coker TR, Davis EM, Donahue KE, Jaén CR, Krist AH, et al. Aspirin Use to Prevent Cardiovascular Disease. *JAMA*. 2022;327:1577. doi: 10.1001/jama.2022.4983
36. Ainsworth BE, Haskell WL, Whitt MC, Irwin ML, Swartz AM, Strath SJ, O'Brien WL, Bassett DR, Jr., Schmitz KH, Emplaincourt PO, et al. Compendium of physical activities: an update of activity codes and MET intensities. *Med Sci Sports Exerc*. 2000;32:S498-504.
37. Manson JE, Greenland P, LaCroix AZ, Stefanick ML, Mouton CP, Oberman A, Perri MG, Sheps DS, Pettinger MB, Siscovick DS. Walking compared with vigorous exercise for the prevention of cardiovascular events in women. *N Engl J Med*. 2002;347:716-725. doi: 10.1056/NEJMoa021067
38. Sims ST, Kubo J, Desai M, Bea J, Beasley JM, Manson JE, Allison M, Seguin RA, Chen Z, Michael YL, et al. Changes in physical activity and body composition in postmenopausal women over time. *Med Sci Sports Exerc*. 2013;45:1486-1492. doi: 10.1249/MSS.0b013e31828af8bd

39. Chiuve SE, Fung TT, Rimm EB, Hu FB, McCullough ML, Wang M, Stampfer MJ, Willett WC. Alternative dietary indices both strongly predict risk of chronic disease. *J Nutr*. 2012;142:1009-1018. doi: 10.3945/jn.111.157222
40. Rautaharju PM, Park LP, Chaitman BR, Rautaharju F, Zhang ZM. The Novacode criteria for classification of ECG abnormalities and their clinically significant progression and regression. *J Electrocardiol*. 1998;31:157-187.
41. Prineas RJ, Crow RS, Zhang Z-M. *The Minnesota code manual of electrocardiographic findings, including measurement and comparison with the Novacode : standards and procedures for ECG measurement in epidemiologic and clinical trials*. 2nd ed. London: Springer; 2010.
42. Xue X, Kim MY, Gaudet MM, Park Y, Heo M, Hollenbeck AR, Strickler HD, Gunter MJ. A comparison of the polytomous logistic regression and joint cox proportional hazards models for evaluating multiple disease subtypes in prospective cohort studies. *Cancer Epidemiol Biomarkers Prev*. 2013;22:275-285. doi: 10.1158/1055-9965.EPI-12-1050
43. Robins JM, Hernán MA, Brumback B. Marginal structural models and causal inference in epidemiology. *Epidemiology*. 2000;11:550-560. doi: 10.1097/00001648-200009000-00011

Table 1. Baseline characteristics of study participants

Characteristics	Non-event (N = 137516)		Non-fatal CHD (N = 10201)		Definitive fatal CHD (N = 513)	
	N	Mean (SD) or median [IQR] or %	N	Mean (SD) or median [IQR] or %	N	Mean (SD) or median [IQR] or %
Demographics/anthropometric						
Age (years)	137516	62.7 (7.2)	10201	65.6 (6.7)	513	68.6 (6.5)
Race (%)						
European American	113878	83.0	8703	85.5	440	85.9
African American	11833	8.6	879	8.6	50	9.8
Hispanics	5547	4.0	308	3.0	10	2.0
Asians or Pacific Islander	3794	2.8	142	1.4	6	1.2
BMI (kg/m ²)	136322	27.8 (5.9)	10123	29.0 (6.0)	508	29.1 (6.5)
SBP (mmHg)	137408	128.5 (19.1)	10194	137.3 (19.8)	512	140.2 (20.7)
Medical history (%)						
Treated hypertension	137516	21.6	10201	35.7	513	40.9
Treated diabetes	137516	3.1	10201	10.1	513	11.5
Lifestyles and social economic factors						
Current smoker (%)	137427	6.5	10195	8.6	512	10.2
Physical activity (MET hr/week)	137427	8.0 [1.5, 17.5]	10195	6.2 [0.8, 15.2]	512	5.8 [0.5, 14.7]
AHEI score	134880	59.0 (11.5)	10000	57.7 (11.3)	503	58.8 (10.8)
Education level	136491	7.3 (1.9)	10120	6.9 (1.9)	508	7.1 (1.9)
Family income	131994	4.3 (1.8)	9818	3.8 (1.7)	492	3.7 (1.8)
Medication use (%)						
Aspirin	137514	18.6	10201	25.0	513	20.9
Statin	137514	6.1	10201	10.3	513	9.2
Beta-blocker	137514	6.9	10201	11.6	513	10.7
CCB	137514	7.8	10201	16.1	513	17.9
RAS inhibitor	137514	7.6	10201	12.4	513	14.6
Diuretics	137514	10.6	10201	16.2	513	18.7
ECG measures						
Bradycardia (%)	53499	2.6	4615	2.9	216	2.3
LVHI	53132	80.0 [76.0, 84.0]	4584	82.0 [78.0, 87.0]	212	82.0 [78.0, 88.0]
LVHI_CAT (%)	53132	0.2	4584	0.7	212	3.3
NOVA5 (%)	51735	28.6	4383	40.2	197	44.7
MC_MI (%)	51667	2.0	4378	3.7	197	5.6
Biomarkers						
HDLC (mg/dL)	29169	55.5 (14.4)	4624	51.1 (13.8)	293	51.5 (14.6)
LDLC (mg/dL)	24127	143.8 (37.4)	3838	148.6 (37.9)	239	146.6 (38.6)

TG (mg/dL)	27547	120.0 [87.0, 168.0]	4284	143.7 [105.0, 197.0]	259	132.0 [96.0, 198.0]
FG (mg/dL)	30281	94.0 [87.0, 103.0]	3577	97.0 [89.0, 113.0]	227	98.0 [90.0, 110.0]
FI (uU/mL)	28751	8.0 [5.2, 12.5]	3196	9.7 [6.2, 15.1]	180	9.3 [6.1, 14.5]
Creatinine (mg/dL)	20531	0.7 [0.7, 0.8]	2307	0.7 [0.7, 0.8]	124	0.8 [0.7, 0.9]
C-reactive protein (mg/dL)	36210	2.6 [1.1, 5.5]	4383	3.3 [1.5, 6.6]	293	3.5 [1.7, 7.6]
Meta-GRS (SD)	20374	-0.1 (1.0)	2314	0.2 (0.9)	129	0.2 (0.9)

N: total number of participants with non-missing covariate value. BMI: body mass index; SBP: systolic blood pressure; MET min/week: metabolic equivalent minutes per week of recreational activity; AHEI score: Alternative Healthy Eating Index score; CCB: calcium-channel blocker; RAS inhibitors: renin-angiotensin system inhibitors; LVHI: left ventricular hypertrophy index; LVHI_CAT: Left Ventricular Hypertrophy Index > 120 (1 vs 0); NOVA5: Novacode 5 for Myocardial Infarction / Ischemia; MC_MI: MI by Minnesota Code; HDLC: high-density lipoprotein cholesterol; LDLC: low-density lipoprotein cholesterol; TG: triglycerides; FG: fasting glucose; FI: fasting insulin; Education level was modeled as a continuous variable ranging from 1 to 11; Family income was modeled as a continuous variable ranging from 1 to 9; Meta-GRS: standard deviation of the normalized weighted genetic risk score of 1.7 million polymorphic susceptibility variants for CHD. Descriptive statistics for continuous variables that follow normal distribution, continuous variables that do not follow normal distribution, and binary variables were expressed as mean (standard deviation), median (first quartile, third quartile), and percentage respectively.

Table 2. Association between premorbid predictors and each of the two types of incident CHD events derived from a joint multivariate Cox model, followed by the relative hazard ratio for a fatal vs. a non-fatal CHD event, of all participants after imputing missingness.

Risk factor	Non-fatal CHD (N = 10201) vs. non-event (N = 137516)			Definitive fatal CHD (N = 513) vs. non-event			Definitive fatal CHD vs. non-fatal CHD		
	HR (95%CI)	P	FDR-q	HR (95%CI)	P	FDR-q	HR (95%CI)	P	FDR-q
Age	1.27 (1.25, 1.28)	2.3E-199	6.2E-198	1.85 (1.71, 2)	3.1E-52	8.4E-51	1.46 (1.35, 1.58)	3.7E-20	1.0E-18
BMI	1.04 (1.02, 1.06)	4.9E-06	7.8E-06	1.04 (0.96, 1.13)	0.31	0.45	1 (0.92, 1.09)	0.93	0.97
SBP	1.1 (1.09, 1.11)	7.3E-58	6.6E-57	1.08 (1.02, 1.14)	3.9E-03	1.8E-02	0.98 (0.93, 1.03)	0.48	0.74
Treated Diabetes	2.01 (1.91, 2.13)	4.5E-134	6.1E-133	1.85 (1.46, 2.35)	4.4E-07	4.0E-06	0.92 (0.72, 1.17)	0.49	0.74
Treated Hypertension	1.48 (1.4, 1.56)	2.6E-43	1.8E-42	1.78 (1.41, 2.25)	1.3E-06	8.8E-06	1.21 (0.95, 1.53)	0.13	0.39
Smoking	1.09 (1.07, 1.12)	1.7E-21	7.6E-21	1.24 (1.15, 1.35)	1.3E-07	1.8E-06	1.14 (1.04, 1.23)	2.7E-03	2.4E-02
PA	0.93 (0.91, 0.94)	2.5E-14	5.6E-14	0.81 (0.74, 0.89)	5.5E-06	3.0E-05	0.88 (0.8, 0.96)	5.2E-03	3.5E-02
AHEI score	0.89 (0.85, 0.94)	1.5E-06	2.5E-06	1.03 (0.84, 1.25)	0.79	0.89	1.15 (0.94, 1.4)	0.18	0.49
Education	0.95 (0.94, 0.96)	7.3E-18	2.5E-17	1.01 (0.96, 1.07)	0.64	0.77	1.06 (1.01, 1.12)	2.0E-02	0.11
Income	0.95 (0.93, 0.96)	4.4E-17	1.3E-16	0.95 (0.89, 1)	0.07	0.19	1 (0.94, 1.06)	0.97	0.97
Aspirin	1.19 (1.14, 1.24)	3.5E-15	8.6E-15	0.82 (0.67, 1)	0.05	0.17	0.69 (0.56, 0.84)	2.9E-04	3.9E-03
Statin	1.2 (1.14, 1.26)	4.3E-12	8.9E-12	0.95 (0.76, 1.2)	0.66	0.77	0.79 (0.63, 1)	0.05	0.17
Betablocker	1.27 (1.21, 1.34)	8.6E-19	3.3E-18	1.15 (0.91, 1.45)	0.23	0.41	0.9 (0.71, 1.14)	0.4	0.74
CCB	1.32 (1.25, 1.4)	1.1E-24	5.9E-24	1.28 (1.02, 1.61)	3.2E-02	0.12	0.97 (0.77, 1.22)	0.78	0.93
RASI	1.03 (0.98, 1.09)	0.21	0.22	1.12 (0.9, 1.39)	0.32	0.45	1.08 (0.86, 1.35)	0.5	0.74
Diuretics	0.97 (0.92, 1.02)	0.17	0.19	1.01 (0.81, 1.25)	0.94	0.97	1.04 (0.83, 1.31)	0.7	0.9

Significant original p values (P) and FDR-q values under alpha level of 0.05 were written in scientific notation. Other covariates adjusted in the model but not shown in this table included: ethnicity, clinical trial vs observational study arms, hormone use ever. Age, per 5 years of increase; BMI, body mass index, per 5 units of increase; SBP, systolic blood pressure, per 10 mmHg of increase; AHEI score, Alternative Healthy Eating Index score, per 25 points of increase; CCB, calcium-channel blocker; RASI, renin-angiotensin system inhibitors. Smoking is modeled as an ordinal variable ranging from 0 to 4, representing <1, 1-4, 5-34, 35-44, ≥45 cigarettes/day respectively. PA, physical activity, modeled as an ordinal variable ranging from 0 to 3, representing 0-100, 100-500, 500-1200, >1200 metabolic equivalent minutes per week of recreational activity. Age, AHEI score, education, and family income were measured at baseline and modeled as time-fixed variables. BMI, SBP, diabetes, hypertension, smoking, physical activity, medications were repeatedly measured and modeled as time-dependent variable.

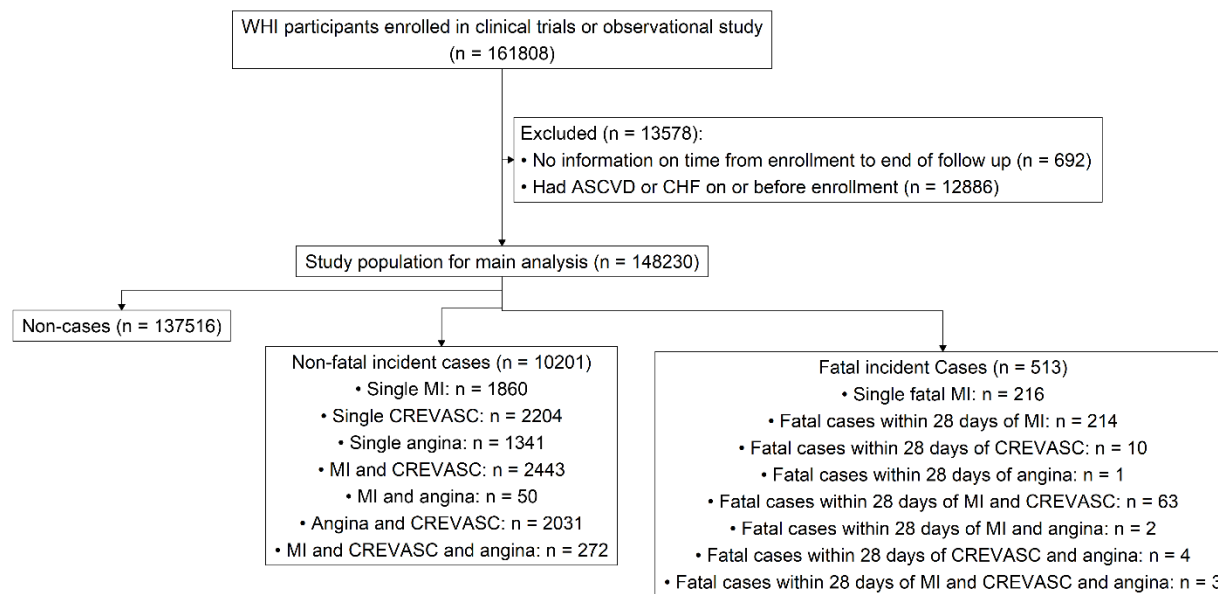


Figure 1. Flow diagram of Women’s Health Initiative participants and outcomes examined in this study during the period 1993-2015. ASCVD: atherosclerosis related cardiovascular disease, CHF: congestive heart failure, CHD: coronary heart disease; CHD cases include individuals whose initial presentation of CHD during follow up was adjudicated as myocardial infarction (MI), a coronary revascularization procedure (CREVASC), a definite death from CHD. CHD cases are considered fatal if the participant died within 28 days of her first CHD event.

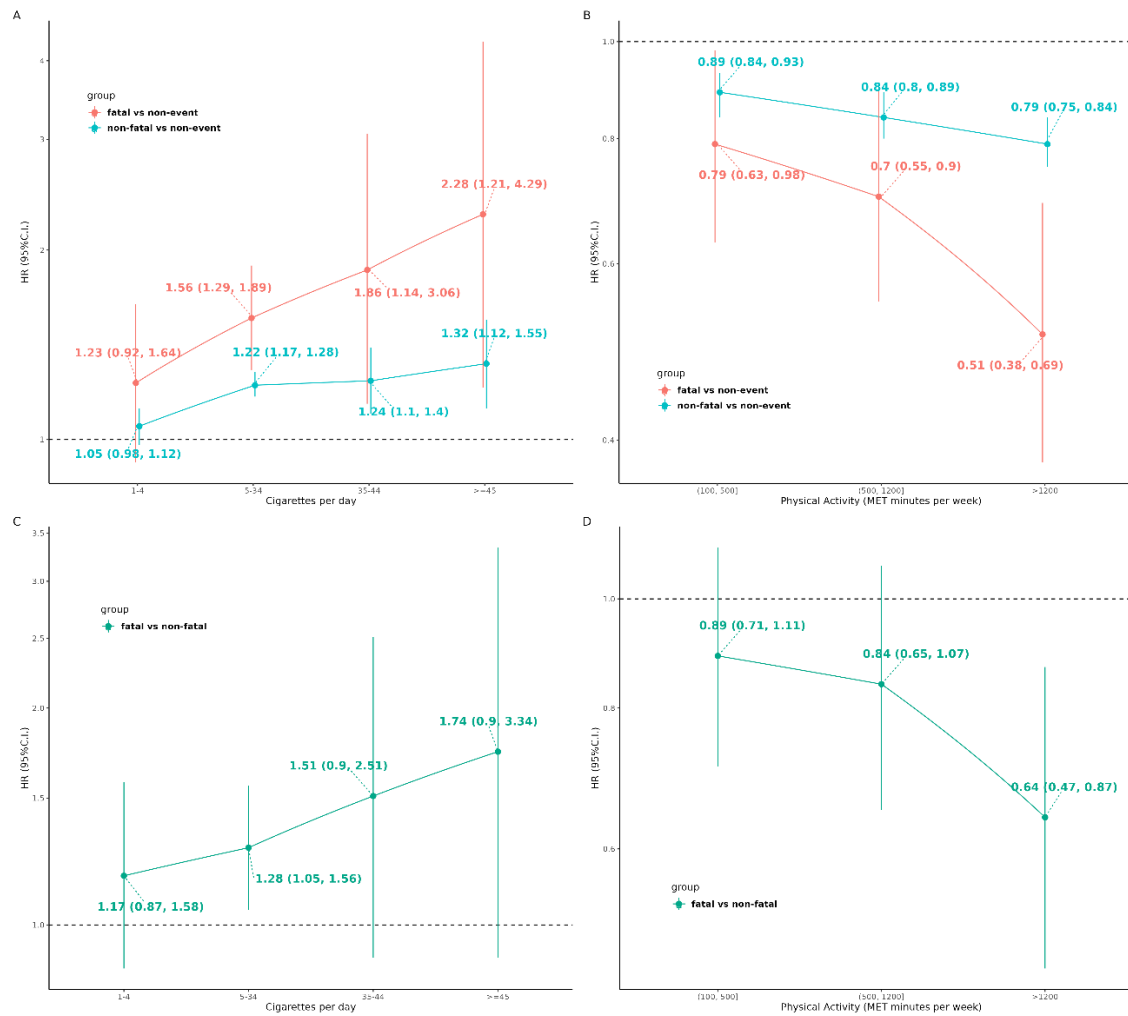
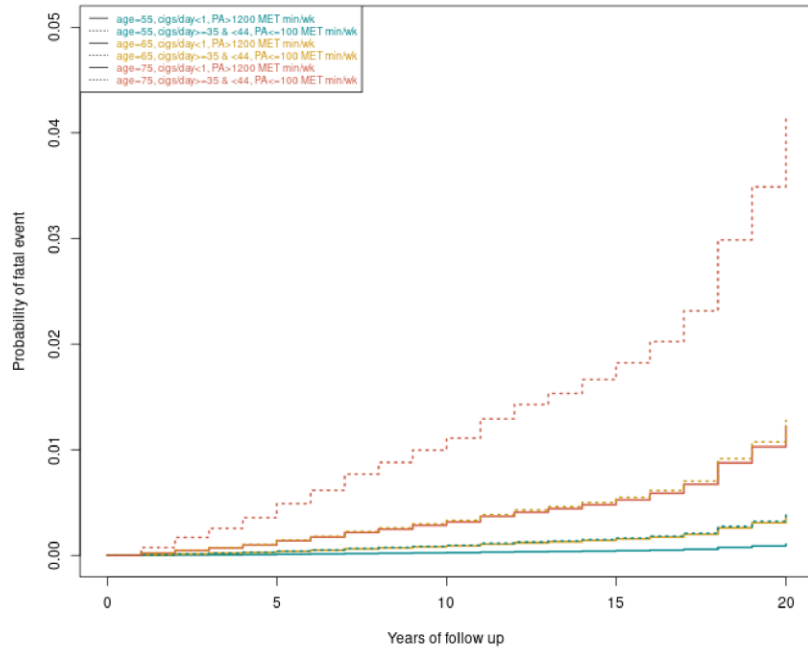


Figure 2. Hazard ratio of smoking (A and C) and physical activity (B and D) with each of the two subtypes of presentation of incident CHD, fatal (red curve), non-fatal (blue curve), and relative HR (green curve) using a joint multivariate Cox model. The level of physical activity was categorized into four groups: sedentary: ≤ 100 MET minutes/week (min/wk); low PA level: >100 and ≤ 500 MET min/wk; moderate PA: >500 and ≤ 1200 MET min/wk; high PA: >1200 MET min/wk. The level of smoking was categorized into five groups: <1 , 1-4, 5-34, 35-44, ≥ 45 cigarettes/day)

A.



B.

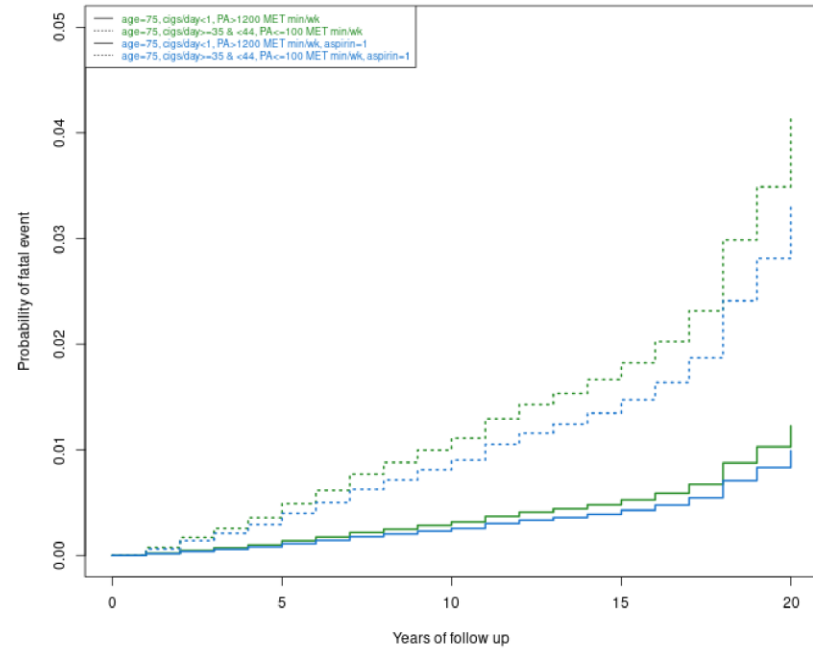


Figure 3. Estimated cumulative absolute risk of a fatal presentation of CAD over a 20 year follow up for subgroup of women using a joint multivariate Cox model. The cumulative probability of a fatal incident CHD event was modeled taking into consideration the competing risk of a non-fatal CHD event. Left graph compares the hazard function of women aged 55, 65, and 75 at baseline with and without healthy lifestyles as defined by no smoking and > 1200 MET min/week of PA vs. smoking 35 to 44 cigarettes/day and < 100 MET min/week of PA. Right graph compares women aged 75 at baseline with and without use of aspirin in addition to women with and without a healthy lifestyle.