

Title: Self-reported concussion history is not related to cortical volume in college athletes.

Authors: Douglas H. Schultz^{1,2}, Heather C. Bouchard^{1,2}, Michelle C. Barbot³, Julia M. Laing-Young^{1,2}, Amanda Chiao⁴, Kate L. Higgins⁵, Cary R. Savage^{1,2}, & Mital Neta^{1,2}

¹ Center for Brain, Biology and Behavior, University of Nebraska-Lincoln

² Department of Psychology, University of Nebraska-Lincoln

³ University of Nebraska Medical Center

⁴ Department of Surgery, Texas Tech University Health Sciences Center El Paso

⁵ Department of Athletics, University of Nebraska-Lincoln

Corresponding author: Douglas H. Schultz
Center for Brain, Biology and Behavior
University of Nebraska-Lincoln
C79 East Stadium, Lincoln, NE 68588
dhschultz@unl.edu
Phone: 402-472-0077
Fax: 402-472-7466

Abstract

The long-term consequences of concussion are still being uncovered but have been linked to disruptions in cognition and psychological well-being. Previous studies focusing on the association between concussion history and structural changes in the brain have reported inconsistent results. We sought to examine the effect of concussion history on cortical volume with a focus on functional networks. These networks are associated with many of the functions that can be disrupted in those with an extensive concussion history. Collegiate athletes (n=296) in the present study who self-reported concussion history did not report different baseline symptoms and did not exhibit consistent differences in cognitive performance relative to those who reported no concussion history. We found that concussion history was not related to cortical volume at the network or region level, even when we compared participants with two or more concussions to those with no concussion history. We did identify relationships between cortical volume in the visual network and dorsal attention network with cognitive performance. In addition to comparing cortical volume between individuals with and without reported concussion history, we also examined whether cortical volume changes could be observed within individuals from baseline to acutely following concussion. We found that network level cortical volume did not change within subjects from baseline measurement to acutely post-concussion. Together, these results suggest that both self-reported concussion history and acute concussion effects are not associated with changes in cortical volume in young adult athletes.

Keywords: Concussion, Concussion history, Brain morphology, Brain structure

Introduction

Each year, tens of thousands of adolescents and young adults experience a sport-related concussion, a form of mild traumatic brain injury (1). In most cases, clinical recovery from concussion symptoms occurs within 14 days (2). Distinct from recovery from acute concussion, concussion history refers to how many concussions a person has experienced in their life. People with a self-reported history of concussion may be at elevated risk for future injury (3,4), and prolonged recovery (5,6). Concussion history has also been associated with other adverse outcomes related to cognition and motor function (7), increased rates of depression (8), and increased risk of stroke (9). The possible long-term effects of concussion are of increasing interest and an open area of inquiry (10).

In conjunction with clinically relevant changes related to concussion history, research suggests that concussion history is associated with alterations in white matter microstructure (11–13), functional connectivity (11,14–16), and electrophysiological measures (17–19). While concussion history appears to be related to these measures of brain structure and function, it is currently unclear whether concussion history results in morphologic changes in gray matter. Gray matter morphologic measures change throughout development (20,21) and in neurodegenerative disorders like chronic traumatic encephalopathy (22), Alzheimer's disease (23) and Parkinson's disease (24). If cortical morphology is influenced by neurodegenerative disorders, the possible link between concussion history and these types of disorders later in life (25) may indicate that concussion history results in morphological changes in the brain and could serve as an objective, quantitative marker for cumulative concussion history.

Previous studies have examined the effect of concussion history on brain morphology; however, the literature on this topic is inconsistent. Some of these inconsistencies may be related to the heterogeneous nature of concussion, focusing on concussion history specifically in athletes, in military personnel, in the general population, and possible differences in the mechanism of injury. Early studies suggested that cortical thickness or volume is generally decreased in those with concussion history across the whole brain (26), and frequently within the frontal cortex (27–31). Other studies have identified increases in cortical thickness or volume with longer intervals between injury and assessment (32,33), and at more acute time points following injury (34,35). Recent studies with larger sample sizes have shown that concussion history is not associated with any significant differences in cortical thickness or volume (36–40) raising questions about the reliability of the earlier work with smaller sample sizes.

Many of the adverse outcomes related to concussion history can be viewed through the lens of network neuroscience. In fact, concussion is increasingly being considered as an injury characterized by disruptions to structural and functional brain connectivity (41–45). These network disruptions have been linked with many of the behavioral outcomes of concussion history including cognitive impairment (46–48), emotion disruptions including depression (49–51), and changes in motor function (52). Few previous studies have examined network-level brain morphology in the context of concussion history. The goal of the current project was to determine the effects of self-reported concussion history on brain morphology, specifically examining how network-level changes in cortical volume were related to concussion history in a large sample of collegiate athletes. This project will also adjudicate on the mixed findings in the literature relating concussion history and brain morphological outcomes.

Methods

Participants

Two hundred ninety-six (men's football $n = 263$; women's soccer $n = 33$) players from the University of Nebraska-Lincoln (UNL) participated in the study (mean age = 19.46 years old, SD = 1.65, range = 17-24). All study procedures were approved by the UNL Institutional Review Board. Clinical baseline assessments consisting of cognitive performance with the Immediate Post-Concussion Assessment and Cognitive Testing (ImPACT), which includes a baseline symptom scale (53), five cognitive composite scores based on task performance (verbal memory, visual memory, visual motor speed, reaction time, and impulse control), along with a self-report measure of the number of diagnosed concussions experienced prior to joining UNL Athletics (Figure 1). These measures were collected by members of the Department of Athletics concussion management team using a standardized protocol. Participants were divided into two groups based on their self-reported history of concussion. One group self-reported zero concussions prior to their baseline assessment at UNL ($n=194$), and the second group self-reported at least one concussion prior to their baseline assessment at UNL ($n=102$). The first year of the study (football, 2018; soccer, 2019) all student-athletes underwent a baseline MRI scan. Since that time, incoming student-athletes underwent a baseline scan prior to participating in their sport. A subset of participants ($n = 44$, 40 males, 4 females) received additional scans if they were diagnosed with a sports-related concussion while competing at UNL. One set of scans was collected within approximately 48 hours of a diagnosed concussion and a second was collected during their return to play protocol immediately prior to returning to contact.

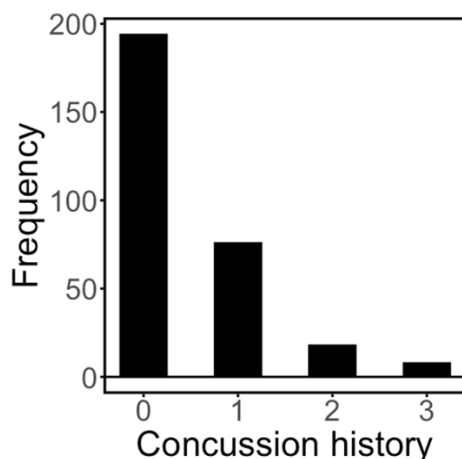


Figure 1. Histogram of self-reported concussion history upon baseline assessment.

MRI Acquisition

MRI data were collected on a 3T Siemens Skyra scanner located within the Center for Brain Biology and Behavior at UNL. As part of a larger project, T1-weighted (TR = 2530 ms, flip angle = 7°, FOV = 256 mm/100% phase, 176 slices, slice thickness = 1 mm), resting-state fMRI, and diffusion scans were collected. For this report, we focus on the T1-weighted data. MRI

acquisition collected post-concussion and during return to play were identical to those collected at baseline.

MRI Preprocessing

The FreeSurfer toolbox (Version 5.3; <https://surfer.nmr.mgh.harvard.edu/>) was used with the default settings for “recon-all” to process anatomical brain images (54–56). Structural image processing consisted of skull stripping, motion correction, affine transformation, correction for inhomogeneities, and parcellation of the cerebral cortex into gyral and sulcal regions (57), (Figure 2A). For region-level analyses, we calculated the mean cortical volume for each of the 74 regions in the Destrieux atlas across hemispheres for each participant. Cortical volume for each of the 74 regions was normalized by dividing the volume measure for each region by the estimated total intracranial volume, which is an index of the participants’ intracranial volume in native space as a function of the atlas scaling factor (58).

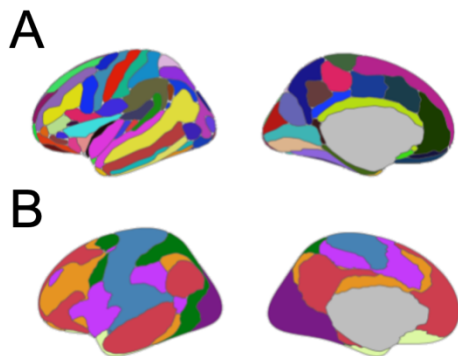


Figure 2. The atlases used for cortical volume comparisons. A. The Destrieux atlas (57) was used for regional comparisons of cortical volume. B. The 7 Network Yeo atlas was used for network-level comparisons of cortical volume (59). Visualizations were created in R Studio (60) using the ggseg package (61).

MRI Network Analysis

The cortex was parcellated into seven different networks (visual, somatomotor, dorsal attention, ventral attention, limbic, control, and default mode) (59) which were derived from a stable clustering algorithm applied to resting-state fMRI data from 1000 healthy control participants. The Yeo atlas was transformed to individual participant space using the `mri_surf2surf` program in FreeSurfer, (Figure 2B). Then cortical volume statistics for each network were calculated for each hemisphere for each participant using the `mri_anatomical_stats` program in FreeSurfer. The mean cortical volume measure across hemispheres was calculated for each participant. Finally, cortical volume measures were normalized by dividing the volume measure for each network by the estimated total intracranial volume.

Results

No differences on symptom report or cognitive measures as a function of concussion history

First, we examined whether there were differences in baseline symptoms or cognitive performance (as measured by ImPACT), between participants who reported a previous concussion and those who reported no previous concussion. The data on symptoms was not normally distributed so we used the nonparametric Mann-Whitney U-test and false discovery rate (FDR) (62) to correct for multiple comparisons across the ten measures. We observed a difference between groups on the reaction time cognitive composite from the ImPACT, $p = 0.04$. We did not observe differences between groups on total symptoms, any of the self-reported symptom clusters (cognitive, somatic, affective, and sleep) (63), or any other cognitive composite scores from the ImPACT (verbal memory, visual memory, visual-motor speed, and impulse control), FDR-corrected p s > 0.09 (Figure 3). In addition to null hypothesis significance testing, we also used a Bayesian Mann-Whitney U-test to examine the degree of evidence for the alternative and null hypothesis. The Bayesian statistics showed anecdotal evidence for a group difference on the visual memory, $BF_{10} = 2.664$, and reaction time, $BF_{10} = 1.081$ cognitive composites. There was anecdotal evidence for the null hypothesis on visual-motor speed, $BF_{10} = 0.451$, somatic symptoms, $BF_{10} = 0.339$, and affective symptoms, $BF_{10} = 0.346$. There was moderate evidence for the null hypothesis on verbal memory, $BF_{10} = 0.326$, impulse control, $BF_{10} = 0.136$, total symptoms, $BF_{10} = 0.142$, cognitive symptoms, $BF_{10} = 0.173$, and sleep symptoms, $BF_{10} = 0.137$. Despite differences in concussion history, we did not observe consistent evidence from the null hypothesis significance testing and Bayesian statistics approaches (with a moderate level of evidence cut-off) for any differences in self-reported symptoms or cognitive performance measures.

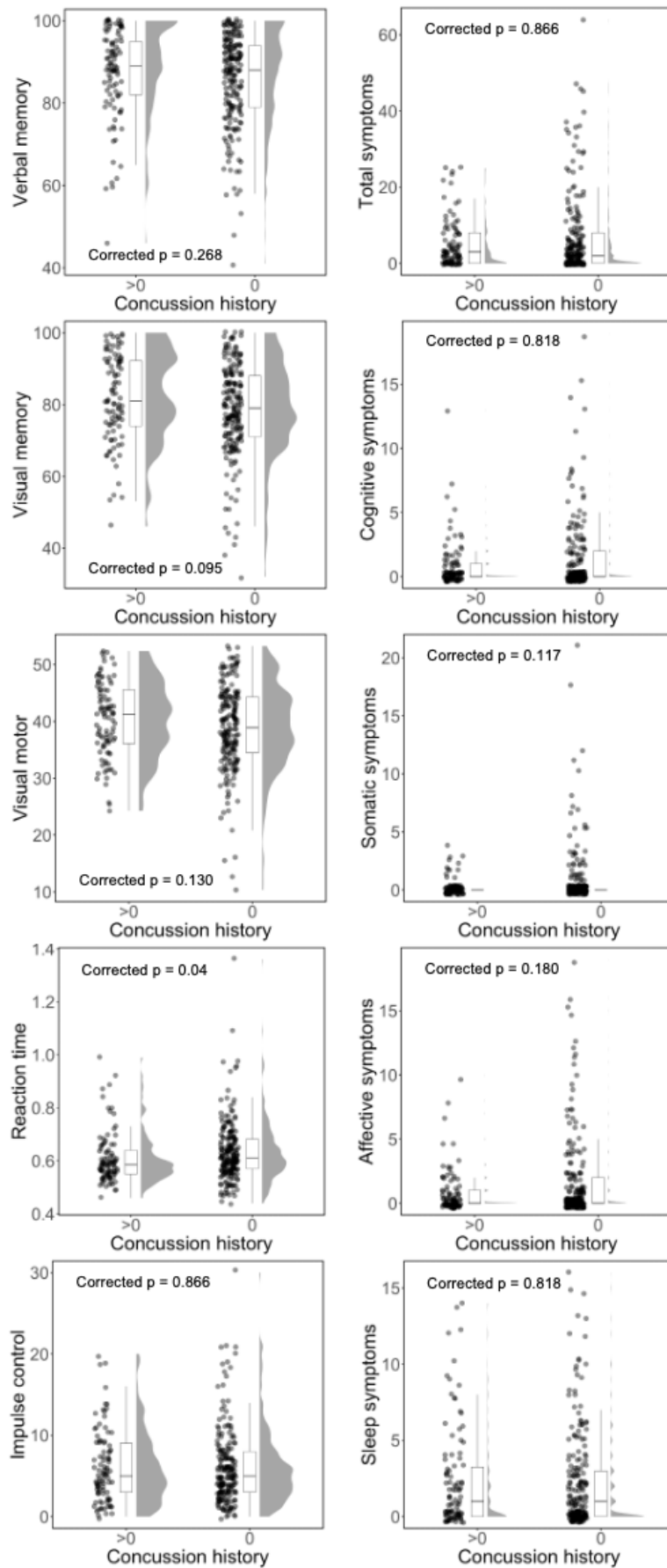


Figure 3. Participants who report concussion history do not endorse more symptoms or show differences in cognitive performance (with the possible exception of reaction time) from those who report no concussion history. Raincloud plots for five measures related to symptoms (total symptoms, cognitive, somatic, affective, and sleep symptoms) in the right panels, and five composite scores for the ImPACT (verbal memory, visual memory, visual motor speed, reaction time, and impulse control) in the left panels. For each raincloud plot the data for each participant is displayed on the left with a jitter. The middle portion is the boxplot for the data. The shape of the distribution of the data is plotted on the right. The FDR-corrected null hypothesis significance testing statistics are reported in each panel.

No differences in network cortical volume related to concussion history

We compared mean cortical volume in each of the seven networks between participants who reported concussion history and those who reported no history of concussion using a Mann-Whitney U-test. We did not observe any differences in cortical volume even with uncorrected p-values, smallest $p = 0.067$. In addition to null hypothesis significance testing, we also used a Bayesian Mann-Whitney U-test to examine the degree of evidence for the null hypothesis (that cortical volume was not different between those with and without self-reported concussion history). We found moderate evidence, BF10 values between 0.155 and 0.136 (64), for the null hypothesis in six networks (visual, somatomotor, dorsal attention, ventral attention, control, and default mode, Table 1). We found anecdotal evidence for the null hypothesis in the limbic network, BF10 = 0.483. Finally, we used a Spearman correlation to examine the relationship between cortical volume in each network and the number of concussions reported by each participant. There was not a significant relationship between concussion history and cortical volume in any of the seven networks, smallest uncorrected $p = 0.075$.

Table 1. Comparison of cortical volume in networks for participants reporting concussion history with those reporting no concussion history

Network	Mann-Whitney		BF10
	W	Uncorrected p	
Visual	9720	0.862	0.133*
Somatomotor	9359	0.727	0.136*
Dorsal Attention	10323	0.295	0.201*
Ventral Attention	9960	0.602	0.160*
Limbic	8731	0.208	0.243*
Control	10303	0.308	0.191*
Default Mode	9209	0.571	0.132*

*Moderate evidence for H_0

No difference in regional cortical volume related to concussion history

Although we did not find any differences in cortical volume at the network-level, it is possible that there are volume changes at a smaller spatial scale that are lost when looking at whole networks. Therefore, we ran the same comparisons for cortical volume in a larger number of spatially smaller, and anatomically defined regions from the Destrieux atlas. We compared the mean cortical volume in each of the 74 regions between participants who reported concussion history and those who reported no history of concussion using a Mann-Whitney U-test. There were no significant differences in cortical volume between groups after FDR correction (Table 2).

Table 2. Comparison of cortical volume in Destrieux atlas regions for participants reporting concussion history with those reporting no concussion history

Region label	Mann-Whitney		
	W	Uncorrected p	FDR-corrected p
G_and_S_frontomargin	9549	0.6225	0.8871
G_and_S_occipital_inf	9877	0.9812	0.9903
G_and_S_paracentral	10293	0.5691	0.8871
G_and_S_subcentral	9018	0.2109	0.6503
G_and_S_transv_frontopol	9693	0.7745	0.9097
G_and_S_cingul-Ant	10370	0.4968	0.8871
G_and_S_cingul-Mid-Ant	10788	0.2017	0.6503
G_and_S_cingul-Mid-Post	10796	0.1977	0.6503
G_cingul-Post-dorsal	10811	0.1903	0.6503
G_cingul-Post-ventral	11965	0.0031	0.2287
G_cuneus	10896	0.1524	0.6503
G_front_inf-Opercular	10965	0.1261	0.6503
G_front_inf-Orbital	9345	0.4332	0.8871
G_front_inf-Triangul	10016	0.8622	0.9522
G_front_middle	10980	0.1209	0.6503
G_front_sup	9217	0.3337	0.7717
G_ins_lg_and_S_cent_ins	9690	0.7712	0.9097
G_insular_short	10581	0.3266	0.7717
G_occipital_middle	10323	0.5403	0.8871
G_occipital_sup	9605	0.6802	0.8871
G_oc-temp_lat-fusifor	9177	0.3059	0.7717
G_oc-temp_med-Lingual	9494	0.5681	0.8871
G_oc-temp_med-Parahip	8251	0.0189	0.3582
G_orbital	8812	0.1223	0.6503
G_parietal_inf-Angular	9426	0.5041	0.8871
G_parietal_inf-Supramar	11156	0.0715	0.6503
G_parietal_sup	11158	0.0710	0.6503
G_postcentral	10076	0.7954	0.9196
G_precentral	10127	0.7397	0.9097
G_precuneus	10244	0.6175	0.8871
G_rectus	9869	0.9712	0.9903
G_subcallosal	9636	0.7129	0.8942
G_temp_sup-G_T_transv	9196	0.3189	0.7717
G_temp_sup-Lateral	9685	0.7658	0.9097
G_temp_sup-Plan_polar	9482	0.5565	0.8871
G_temp_sup-Plan_tempo	9432	0.5096	0.8871
G_temporal_inf	10413	0.4588	0.8871
G_temporal_middle	10636	0.2893	0.7717
Lat_Fis-ant-Horizont	9850	0.9504	0.9903
Lat_Fis-ant-Vertical	10770	0.2109	0.6503
Lat_Fis-post	9394	0.4754	0.8871
Pole_occipital	11616	0.0139	0.3582
Pole_temporal	8950	0.1776	0.6503
S_calcarine	10155	0.7097	0.8942
S_central	9336	0.4257	0.8871
S_cingul-Marginalis	10181	0.6823	0.8871
S_circular_insula_ant	9885	0.9903	0.9903
S_circular_insula_inf	9433	0.5105	0.8871
S_circular_insula_sup	9844	0.9436	0.9903
S_collat_transv_ant	8869	0.1432	0.6503
S_collat_transv_post	10180	0.6833	0.8871
S_front_inf	10947	0.1326	0.6503
S_front_middle	10044	0.8308	0.9459
S_front_sup	9804	0.8982	0.9775
S_interm_prim-Jensen	8996	0.1997	0.6503
S_intraparietal_and_P_trans	11371	0.0349	0.5161
S_oc_middle_and_Lunates	10274	0.5876	0.8871
S_oc_sup_and_transversal	10607	0.3086	0.7717
S_occipital_ant	8928	0.1677	0.6503
S_oc-temp_lat	9210	0.3287	0.7717
S_oc-temp_med_and_Lingual	8557	0.0562	0.6503
S_orbital_lateral	9340	0.4290	0.8871
S_orbital_med-olfact	9551	0.6246	0.8871
S_orbital-H_Shaped	9756	0.8442	0.9466
S_parieto_occipital	10339	0.5253	0.8871
S_pericallosal	10202	0.6604	0.8871
S_postcentral	10923	0.1417	0.6503
S_precentral-inf-part	9606	0.6812	0.8871
S_precentral-sup-part	9281	0.3815	0.8554
S_suborbital	9096	0.2545	0.7532
S_subparietal	10231	0.6306	0.8871
S_temporal_inf	9998	0.9232	0.9901
S_temporal_sup	8257	0.0194	0.3582
S_temporal_transverse	10908	0.1476	0.6503

Concussion history of two or more is not associated with differences in cortical volume

We did not observe any differences in cortical volume when comparing participants reporting any history of concussion (one or more concussions) to participants reporting no history of concussion. However, it is possible that we may have identified differences if we compared the no concussion history group to participants who report a greater number of prior concussions. We compared cortical volume for participants who reported having two or more concussions before completing their baseline MRI scan at UNL using a Mann-Whitney U-test. There were 26 participants who reported more than one concussion in their lifetime (2+ concussions), and 200 reporting no history of concussion. There was no difference in cortical volume in any of the seven networks for the participants with two or more concussions relative to the no concussion history group, smallest $p = 0.136$.

Cortical volume is related to cognitive measures

Although we did not identify any relationship between cortical volume and concussion history, we did find relationships between cortical volume and cognitive measures. Specifically, we examined the five cognitive composites from the ImPACT test (verbal memory, visual memory, visual motor speed, reaction time, and impulse control) using Spearman correlations because these were not all normally distributed. We used FDR to correct for multiple comparisons of cortical volume over the seven networks and five cognitive performance scores. We found that cortical volume in the visual network was positively correlated with verbal memory ($\rho = 0.1718$, FDR-corrected $p = 0.0265$), visual memory ($\rho = 0.2364$, FDR-corrected $p = 0.0014$), and visual motor speed ($\rho = 0.1662$, FDR-corrected $p = 0.0291$), and negatively correlated with reaction time ($\rho = -0.1876$, FDR-corrected $p = 0.0207$). Further, cortical volume in the dorsal attention network was positively correlated with visual memory ($\rho = 0.1792$, FDR-corrected $p = 0.023$) (Figure 4).

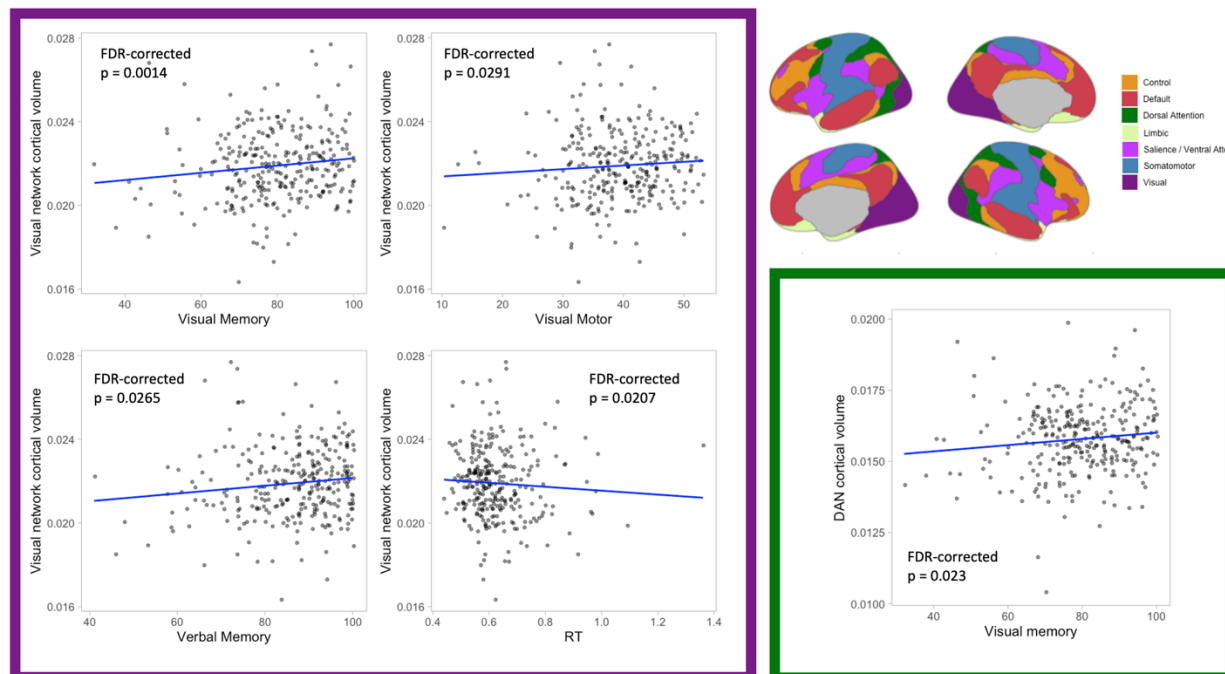


Figure 4. Cortical volume is related to cognitive performance in the visual and dorsal attention networks. Visual memory, verbal memory, verbal memory and reaction time composite scores for the ImpACT are correlated with cortical volume in the visual network (purple square). Visual memory performance is correlated with cortical volume in the dorsal attention network (green square).

No differences in cortical volume related to acute concussion

Next, we compared effects of self-reported concussion history to acute effects following a concussion. Indeed, although we did not observe a relationship between concussion history and cortical volume, it is possible that changes in cortical volume related to concussion are evident closer to the time of injury and that they had largely returned to normal when we collected baseline measures in our sample. To address this possibility, we examined cortical volume in a subset of our sample who were diagnosed with a concussion during their time playing sports at UNL. These 44 participants received baseline scans when they entered the program, within approximately 48 hours of being diagnosed with a concussion (i.e., acute period), and during their return to play protocol immediately prior to returning to contact. We did not identify any changes in cortical volume in any of the seven networks from baseline to the acute period with a paired *t*-test, smallest uncorrected-*p* = 0.1771. Additionally, we did not identify any changes in cortical volume in any of the seven networks from baseline to their scan immediately prior to returning to contact, smallest uncorrected-*p* = 0.1551 (Table 3).

Table 3. Comparison of cortical volume in networks from baseline to acutely post-concussion (48 hrs), and immediately prior to return to contact.

Network	Baseline to Post-concussion		Baseline to Return to Contact	
	<i>t</i>	Uncorrected <i>p</i>	<i>t</i>	Uncorrected <i>p</i>
Visual	-0.178	0.86	-1.45	0.155
Somatomotor	-0.035	0.972	-1.213	0.232
Dorsal Attention	1.372	0.177	0.889	0.379
Ventral Attention	0.194	0.848	0.247	0.806
Limbic	0.888	0.38	0.66	0.513
Control	0.803	0.426	0.181	0.857
Default Mode	-0.428	0.671	-0.573	0.57

We also compared cortical volume on the region level from baseline to acutely post-concussion and immediately prior to return to contact with paired *t*-tests. There were no differences for either analysis after multiple comparison correction with FDR (baseline to post-injury smallest FDR-corrected *p* = 0.632, baseline to return to contact smallest FDR-corrected *p* = 0.963).

Discussion

Self-reported concussion history was not associated with reliable differences in baseline symptom reporting or cognitive performance. We found that concussion history was not associated with differences in cortical volume in a large sample of collegiate athletes – either at the level of functional networks or individual regions. Furthermore, we found support for the null hypothesis that concussion history is not associated with cortical volume differences on the network level with Bayesian statistics. These results strongly suggest that there is not a meaningful difference in cortical volume between young adult athletes with and without self-reported concussion history. Despite a lack of difference in cortical volume related to concussion history, we did identify relationships between cortical volume and cognitive performance, with greater cortical volume in the visual network and dorsal attention network being associated with better memory and motor performance. Finally, we examined the possibility that measures of cortical morphology may change in the more acute period following concussion. We did not find any evidence that cortical volume changed on the network or region level between baseline and post-injury (approximately 48 hours following injury), or when participants were cleared to return to contact (largely within 2 weeks of injury).

Previous studies have suggested that concussion history is not related to differences in baseline neurocognitive assessment in college athletes (65–67) and in players participating in the National Football League Scouting Combine (68). Large meta-analytic studies have provided further support (69), but it should be noted that another meta-analysis did find weak evidence for concussion history being related to worse performance on an attention domain that overlaps with some ImpACT measure scores (70). We did not identify any differences in the majority of ImpACT composite scores or self-reported symptoms between collegiate athletes with and without concussion history after correcting for multiple comparisons. Reaction time was significantly faster in participants with self-reported concussion history after multiple comparison correction using null hypothesis significance testing. However, Bayesian statistics only suggested anecdotal evidence for this difference. The possible difference in reaction time between those with and without concussion history could be explained by several factors. It is

possible that concussion history has a small effect on reaction time. It is also possible that participants with concussion history have completed the ImPACT assessment more frequently (given it is part of clinical care), and the increase in speed for the concussion history group is a practice effect. There is also a possibility that faster reaction time conveys an advantage in sports and that people with faster reaction time get more playing time and are thus at greater risk for concussion. Together, the lack of reliable differences in cognition or symptoms prior to concussion history with increased symptoms or cognitive deficits in this sample of collegiate athletes.

We did not observe any differences in network or region-level cortical volume between participants with and without concussion history. Additionally, we did not observe a difference in network-level cortical volume between individuals reporting zero and those reporting 2 or more previous concussions. These results are consistent with recent, larger sample studies examining the effect of concussion history on cortical morphology on the region- or vertex-level (36,39,40). Other studies have reported associations between concussion history and morphology, but in many cases, the sample sizes of these studies were much smaller (27–31,71,72), injuries were more severe (26), or participants were experiencing persistent symptoms (73). We used Bayesian statistics and found moderate evidence for the null hypothesis that concussion history is not associated with differences in cortical volume on the network level. Together, these results add to growing evidence that cortical morphology is not different between those with and without concussion history. Our results are based on a sample of young adult collegiate athletes. It remains possible that the effects of concussion on brain morphology follow a longer temporal trajectory than we were able to measure as suggested by others (74,75), or that intelligence or educational attainment (63) or fitness level can mask more subtle effects (76).

We did find significant relationships between cortical volume in the visual and dorsal attention network and cognitive performance. Specifically, cortical volume in the visual network was positively correlated with visual and verbal memory, and visual motor performance composites from the ImPACT. Cortical volume in the visual network was negatively correlated with the reaction time composite. Finally, cortical volume in the dorsal attention network was positively correlated with visual memory. Other studies have identified relationships between cortical morphology in the visual network and attention (77), general intelligence (78), balance training (79), and visual cognitive task performance (80). Associations between cortical morphology in the dorsal attention network and cognition have received less attention in the literature, but cortical thickness in the dorsal attention network can be used to predict executive function and memory (81). Cortical thickness in the dorsal attention network has also been associated with sustained attention (77). Our results are consistent with this previous work describing relationships between cortical morphology and cognitive performance.

Although we did not observe any differences in cortical volume as a function of concussion history, we measured cortical volume when participants entered their sport at UNL. It is possible that the prior concussions that were reported had occurred years earlier, and that the effect of concussion on brain morphology is rather transient. A subset of our sample ($n = 44$) was diagnosed with a concussion while at UNL, so we explored effects as a function of acute concussion but did not observe any changes in cortical volume. Previous studies examining the effect of acute concussion on cortical morphology are mixed. Some studies report increases in

cortical volume or thickness in the period immediately following concussion (32,35), others report a mix of decreases and increases in cortical volume (34), and no changes have also been reported (37). Some of these inconsistencies may be related to differences in samples (e.g., military, collegiate athletes, community), time points evaluated (e.g., when neuroimaging data was collected relative to injury), and methodological differences (e.g., choice of control group, atlas used). While our acute concussion sample size is modest, our study was unique in its examination of volumetric changes from prior to concussion to acutely after concussion (within roughly 48 hours of injury) in the same participants. This within-subjects assessment decreases the probability that potential structural differences attributed to concussion could be explained by variability between independent concussion and non-concussion control groups. Together, not only is self-reported concussion history not related to cortical volume in collegiate-aged participants, but cortical volume does not appear to change in the more acute period surrounding injury.

Limitations

The current study has some limitations. First, our sample largely consisted of male football players (only a small subset of our sample comprised female soccer players). Future studies may want to increase sampling of female participants to ensure that results are generalizable, or to accurately describe potential differences in the relationship between concussion history and brain morphology between males and females. Second, our sample of participants with concussion history were not experiencing more symptoms or cognitive deficits at baseline. It is possible that changes in brain morphology may be related to persistent or untreated effects of concussion, and selectively targeting those experiencing persistent symptoms may reveal structural brain changes. Third, our measure of concussion history was collected as part of the Department of Athletics concussion management team's intake process. It was a self-report measure that did not specify if the concussions were related to sport participation, other factors, or when the concussion occurred. While reliability of self-report concussion history is relatively high (82), there is room for inconsistencies which could be random or systematic in nature. Additionally, these self-reported diagnoses were made by different practitioners who may be following different protocols. It is possible that the self-report measure is influenced by diagnoses which may not have been accurate. It is also possible that the mechanism of injury is an important factor to consider and that cannot be factored into the present results. Future studies should adapt well-validated approaches to collecting a detailed concussion history (83).

Conclusions

Together, our results suggest that concussion history in young adult collegiate athletes is not associated with changes in cortical volume. We found that participants with and without concussion history reported similar (minimal) levels of baseline symptoms and were characterized by similar levels of cognitive performance at baseline. We did not observe differences in cortical volume at the network- or region-level, even when we tested the more extreme comparison of participants reporting two or more concussions to those reporting no concussion history. We did find significant relationships between cortical volume and cognitive performance in the visual and dorsal attention networks, but this was independent of concussion

history. Finally, we did not observe any differences in cortical volume from baseline to either acutely following concussion or from baseline to return to contact. While it is challenging to interpret null findings, this pattern of results is consistent with clinical and other scientific evidence suggesting that concussion-related outcomes are associated with disruptions in brain function and connectivity as opposed to anatomical changes. Indeed, previous research has suggested that concussion history is associated with other changes in the brain (white matter, functional connectivity, electrophysiology, etc.). Our results suggest that future work to identify brain markers of concussion history may be better served by examining these measures rather than focusing on cortical morphology.

Funding

Funding for this study was provided by the Great Plains IdeA-CTR (MN) and the UNL Office for Research and Economic Development.

Acknowledgements

This collaborative work was made possible by the staff and facilities of the Center for Brain, Biology and Behavior. This work was completed using the Holland Computing Center of the University of Nebraska, which receives support from the Nebraska Research Initiative. We'd like to acknowledge the cooperation, collaboration, and contributions of UNL Athletics, which were critical to the project. In addition, we wish to acknowledge the contributions of Joanne Murray, Garrett Schwindt, Liv O'Claire, Ruby Basyouni, and Elliot Carlson related to collecting the MRI data.

References

1. Graham R, Rivara F, Ford M, Spicer C, editors. Sports-Related Concussions in Youth: Improving the Science, Changing the Culture [Internet]. Washington, DC: National Academies Press; 2015 [cited 2020 Sep 22]. Available from: <https://academic.oup.com/milmed/article/180/2/123-125/4160004>
2. Broglio SP, McAllister T, Katz BP, LaPradd M, Zhou W, McCrea MA, et al. The Natural History of Sport-Related Concussion in Collegiate Athletes: Findings from the NCAA-DoD CARE Consortium. *Sports Med.* 2022 Feb;52(2):403–15.
3. Guskiewicz KM, McCrea M, Marshall SW, Cantu RC, Randolph C, Barr W, et al. Cumulative Effects Associated With Recurrent Concussion in Collegiate Football Players: The NCAA Concussion Study. *JAMA.* 2003 Nov 19;290(19):2549.
4. Putukian M, Riegler K, Amalfe S, Bruce J, Echemendia R. Preinjury and Postinjury Factors That Predict Sports-Related Concussion and Clinical Recovery Time. *Clin J Sport Med* [Internet]. 2018 Dec 6 [cited 2023 Jan 25]; Publish Ahead of Print. Available from: <https://journals.lww.com/00042752-9000000000-99089>
5. Covassin T, Stearne D, Elbin III R. Concussion History and Postconcussion Neurocognitive Performance and Symptoms in Collegiate Athletes. *J Athl Train.* 2008;43(2):119–24.
6. Iverson GL, Gardner AJ, Terry DP, Ponsford JL, Sills AK, Broshek DK, et al. Predictors of clinical recovery from concussion: a systematic review. *Br J Sports Med.* 2017 Jun;51(12):941–8.
7. Martini DN, Broglio SP. Long-term effects of sport concussion on cognitive and motor performance: A review. *Int J Psychophysiol.* 2018 Oct;132:25–30.
8. Guskiewicz KM, Marshall SW, Bailes J, McCrea M, Harding HP, Matthews A, et al. Recurrent Concussion and Risk of Depression in Retired Professional Football Players. *Med Sci Sports Exerc.* 2007 Jun;39(6):903–9.
9. Brett BL, Kerr ZY, Aggarwal NT, Chandran A, Mannix R, Walton S, et al. Cumulative Concussion and Odds of Stroke in Former National Football League Players. *Stroke* [Internet]. 2022 Jan [cited 2023 Nov 3];53(1). Available from: <https://www.ahajournals.org/doi/10.1161/STROKEAHA.121.035607>
10. Patricios JS, Schneider KJ, Dvorak J, Ahmed OH, Blauwet C, Cantu RC, et al. Consensus statement on concussion in sport: the 6th International Conference on Concussion in Sport–Amsterdam, October 2022. *Br J Sports Med.* 2023 Jun;57(11):695–711.
11. Orr CA, Albaugh MD, Watts R, Garavan H, Andrews T, Nickerson JP, et al. Neuroimaging Biomarkers of a History of Concussion Observed in Asymptomatic Young Athletes. *J Neurotrauma.* 2016 May;33(9):803–10.
12. Wright DK, Gardner AJ, Wojtowicz M, Iverson GL, O'Brien TJ, Shultz SR, et al. White Matter Abnormalities in Retired Professional Rugby League Players with a History of Concussion. *J Neurotrauma.* 2021 Apr 15;38(8):983–8.

13. Churchill NW, Caverzasi E, Graham SJ, Hutchison MG, Schweizer TA. White matter microstructure in athletes with a history of concussion: Comparing diffusion tensor imaging (DTI) and neurite orientation dispersion and density imaging (NODDI). *Hum Brain Mapp.* 2017 Aug;38(8):4201–11.
14. Churchill N, Hutchison MG, Leung G, Graham S, Schweizer TA. Changes in functional connectivity of the brain associated with a history of sport concussion: A preliminary investigation. *Brain Inj.* 2017 Jan 2;31(1):39–48.
15. Meier TB, Lancaster MA, Mayer AR, Teague TK, Savitz J. Abnormalities in Functional Connectivity in Collegiate Football Athletes with and without a Concussion History: Implications and Role of Neuroactive Kynurenine Pathway Metabolites. *J Neurotrauma.* 2017 Feb 15;34(4):824–37.
16. Sihag S, Naze S, Taghdiri F, Tator C, Wennberg R, Mikulis D, et al. Multimodal Dynamic Brain Connectivity Analysis Based on Graph Signal Processing for Former Athletes With History of Multiple Concussions. *IEEE Trans Signal Inf Process Netw.* 2020;6:284–99.
17. Hudac CM, Cortesa CS, Ledwidge PS, Molfese DL. History of concussion impacts electrophysiological correlates of working memory. *Int J Psychophysiol.* 2018 Oct;132:135–44.
18. Tapper A, Staines WR, Niechwiej-Szwedo E. EEG reveals deficits in sensory gating and cognitive processing in asymptomatic adults with a history of concussion. *Brain Inj.* 2022 Sep 19;36(10–11):1266–79.
19. Olson RL, Brush CJ, Ehmann PJ, Buckman JF, Alderman BL. A history of sport-related concussion is associated with sustained deficits in conflict and error monitoring. *Int J Psychophysiol.* 2018 Oct;132:145–54.
20. Bethlehem RAI, Seidlitz J, White SR, Vogel JW, Anderson KM, Adamson C, et al. Brain charts for the human lifespan. *Nature.* 2022 Apr 21;604(7906):525–33.
21. MacDonald ME, Pike GB. MRI of healthy brain aging: A review. *NMR Biomed.* 2021 Sep;34(9):e4564.
22. Alosco ML, Mian AZ, Buch K, Farris CW, Uretsky M, Tripodis Y, et al. Structural MRI profiles and tau correlates of atrophy in autopsy-confirmed CTE. *Alzheimers Res Ther.* 2021 Dec;13(1):193.
23. Garg N, Choudhry MS, Bodade RM. A review on Alzheimer’s disease classification from normal controls and mild cognitive impairment using structural MR images. *J Neurosci Methods.* 2023 Jan;384:109745.
24. Sarasso E, Agosta F, Piramide N, Filippi M. Progression of grey and white matter brain damage in Parkinson’s disease: a critical review of structural MRI literature. *J Neurol.* 2021 Sep;268(9):3144–79.
25. Brett BL, Gardner RC, Godbout J, Dams-O’Connor K, Keene CD. Traumatic Brain Injury and Risk of Neurodegenerative Disorder. *Biol Psychiatry.* 2022 Mar;91(5):498–507.

26. Merkle TL, Bigler ED, Wilde EA, McCauley SR, Hunter JV, Levin HS. SHORT COMMUNICATION: Diffuse Changes in Cortical Thickness in Pediatric Moderate-to-Severe Traumatic Brain Injury. *J Neurotrauma*. 2008 Nov;25(11):1343–5.
27. Adler CM, DelBello MP, Weber W, Williams M, Duran LRP, Fleck D, et al. MRI Evidence of Neuropathic Changes in Former College Football Players. *Clin J Sport Med*. 2018 Mar;28(2):100–5.
28. Churchill N, Hutchison M, Richards D, Leung G, Graham S, Schweizer TA. Brain Structure and Function Associated with a History of Sport Concussion: A Multi-Modal Magnetic Resonance Imaging Study. *J Neurotrauma*. 2017 Feb 15;34(4):765–71.
29. Dean PJA, Sato JR, Vieira G, McNamara A, Sterr A. Long-term structural changes after mTBI and their relation to post-concussion symptoms. *Brain Inj*. 2015 Aug 24;29(10):1211–8.
30. Meier TB, Bellgowan PSF, Bergamino M, Ling JM, Mayer AR. Thinner Cortex in Collegiate Football Players With, but not Without, a Self-Reported History of Concussion. *J Neurotrauma*. 2016 Feb 15;33(4):330–8.
31. Sussman D, Da Costa L, Chakravarty MM, Pang EW, Taylor MJ, Dunkley BT. Concussion induces focal and widespread neuromorphological changes. *Neurosci Lett*. 2017 May;650:52–9.
32. Dall'Acqua P, Johannes S, Mica L, Simmen HP, Glaab R, Fandino J, et al. Prefrontal Cortical Thickening after Mild Traumatic Brain Injury: A One-Year Magnetic Resonance Imaging Study. *J Neurotrauma*. 2017 Dec;34(23):3270–9.
33. Mills BD, Goubran M, Parivash SN, Dennis EL, Rezaii P, Akers C, et al. Longitudinal alteration of cortical thickness and volume in high-impact sports. *NeuroImage*. 2020 Aug;217:116864.
34. Shao M, Cao J, Bai L, Huang W, Wang S, Sun C, et al. Preliminary Evidence of Sex Differences in Cortical Thickness Following Acute Mild Traumatic Brain Injury. *Front Neurol*. 2018 Oct 17;9:878.
35. Ware AL, Goodrich-Hunsaker NJ, Lebel C, Shukla A, Wilde EA, Abildskov TJ, et al. Post-Acute Cortical Thickness in Children with Mild Traumatic Brain Injury versus Orthopedic Injury. *J Neurotrauma*. 2020 Sep 1;37(17):1892–901.
36. Bigler ED, Finuf C, Abildskov TJ, Goodrich-Hunsaker NJ, Petrie JA, Wood DM, et al. Cortical thickness in pediatric mild traumatic brain injury including sports-related concussion. *Int J Psychophysiol*. 2018 Oct;132:99–104.
37. Bobholz SA, Brett BL, España LY, Huber DL, Mayer AR, Harezlak J, et al. Prospective study of the association between sport-related concussion and brain morphometry (3T-MRI) in collegiate athletes: study from the NCAA-DoD CARE Consortium. *Br J Sports Med*. 2021 Feb;55(3):169–74.
38. Brett BL, Bobholz SA, España LY, Huber DL, Mayer AR, Harezlak J, et al. Cumulative Effects of Prior Concussion and Primary Sport Participation on Brain Morphometry in

- Collegiate Athletes: A Study From the NCAA–DoD CARE Consortium. *Front Neurol*. 2020 Jul 28;11:673.
39. Meier TB, España LY, Kirk AJ, Nader AM, Powell JE, Nelson LD, et al. Association of Previous Concussion with Hippocampal Volume and Symptoms in Collegiate-Aged Athletes. *J Neurotrauma*. 2021 May 15;38(10):1358–67.
 40. Oliveira TG, Ifrah C, Fleysler R, Stockman M, Lipton ML. Soccer heading and concussion are not associated with reduced brain volume or cortical thickness. Bergsland N, editor. *PLOS ONE*. 2020 Aug 10;15(8):e0235609.
 41. Anderson ED, Talukdar T, Goodwin G, Di Pietro V, Yakoub KM, Zwilling CE, et al. Assessing blood oxygen level–dependent signal variability as a biomarker of brain injury in sport-related concussion. *Brain Commun*. 2023 Jul 1;5(4):fcad215.
 42. Bouchard HC, Higgins KL, Amadon GK, Laing JM, Maerlender A, Al-Momani S, et al. Concussion-related disruptions to hub connectivity in the default mode network are related to symptoms and cognition [Internet]. *Neuroscience*; 2023 Mar [cited 2023 May 9]. Available from: <http://biorxiv.org/lookup/doi/10.1101/2023.03.07.531551>
 43. Churchill NW, Hutchison MG, Graham SJ, Schweizer TA. Long-term changes in the small-world organization of brain networks after concussion. *Sci Rep*. 2021 Mar 25;11(1):6862.
 44. Meier TB, Bellgowan PSF, Mayer AR. Longitudinal assessment of local and global functional connectivity following sports-related concussion. *Brain Imaging Behav*. 2017 Feb;11(1):129–40.
 45. Moreira da Silva N, Cowie CJA, Blamire AM, Forsyth R, Taylor PN. Investigating Brain Network Changes and Their Association With Cognitive Recovery After Traumatic Brain Injury: A Longitudinal Analysis. *Front Neurol*. 2020 Jun 9;11:369.
 46. Li X, Wang F, Liu X, Cao D, Cai L, Jiang X, et al. Changes in Brain Function Networks in Patients With Amnesic Mild Cognitive Impairment: A Resting-State fMRI Study. *Front Neurol*. 2020 Sep 30;11:554032.
 47. Mill RD, Gordon BA, Balota DA, Cole MW. Predicting dysfunctional age-related task activations from resting-state network alterations. *NeuroImage*. 2020 Nov;221:117167.
 48. Sullivan MD, Anderson JAE, Turner GR, Spreng RN. Intrinsic neurocognitive network connectivity differences between normal aging and mild cognitive impairment are associated with cognitive status and age. *Neurobiol Aging*. 2019 Jan;73:219–28.
 49. Drysdale AT, Grosenick L, Downar J, Dunlop K, Mansouri F, Meng Y, et al. Resting-state connectivity biomarkers define neurophysiological subtypes of depression. *Nat Med*. 2016 Dec 5;23(1):28–38.
 50. Greicius MD, Flores BH, Menon V, Glover GH, Solvason HB, Kenna H, et al. Resting-state functional connectivity in major depression: abnormally increased contributions from subgenual cingulate cortex and thalamus. *Biol Psychiatry*. 2007;62(5):429–37.

51. Schultz DH, Ito T, Solomyak LI, Chen RH, Mill RD, Anticevic A, et al. Global connectivity of the fronto-parietal cognitive control network is related to depression symptoms in the general population. *Netw Neurosci*. 2019 Jan;3(1):107–23.
52. Newbold DJ, Laumann TO, Hoyt CR, Hampton JM, Montez DF, Raut RV, et al. Plasticity and Spontaneous Activity Pulses in Disused Human Brain Circuits. *Neuron*. 2020 Aug;107(3):580-589.e6.
53. Lovell MR, Iverson GL, Collins MW, Podell K, Johnston KM, Pardini D, et al. Measurement of Symptoms Following Sports-Related Concussion: Reliability and Normative Data for the Post-Concussion Scale. *Appl Neuropsychol*. 2006 Sep;13(3):166–74.
54. Dale AM, Fischl B, Sereno MI. Cortical Surface-Based Analysis. *NeuroImage*. 1999;(9):179–94.
55. Fischl B, Sereno MI, Dale AM. Cortical Surface-Based Analysis. *NeuroImage*. 1999;(9):195–207.
56. Fischl B, Salat DH, Busa E, Albert M, Dieterich M, Haselgrove C, et al. Whole brain segmentation: automated labeling of neuroanatomical structures in the human brain. *Neuron*. 2002;33(3):341–55.
57. Destrieux C, Fischl B, Dale A, Haglren E. Automatic parcellation of human cortical gyri and sulci using standard anatomical nomenclature. *NeuroImage*. 2010 Oct;53(1):1–15.
58. Buckner RL, Head D, Parker J, Fotenos AF, Marcus D, Morris JC, et al. A unified approach for morphometric and functional data analysis in young, old, and demented adults using automated atlas-based head size normalization: reliability and validation against manual measurement of total intracranial volume. *NeuroImage*. 2004 Oct;23(2):724–38.
59. Yeo BTT, Krienen FM, Sepulcre J, Sabuncu MR, Lashkari D, Hollinshead M, et al. The organization of the human cerebral cortex estimated by intrinsic functional connectivity. *J Neurophysiol*. 2011 Sep 1;106(3):1125–65.
60. Posit team. RStudio: Integrated Development Environment for R [Internet]. Boston, MA: Posit Software, PBC; 2023. Available from: <http://www.posit.co/>
61. Mowinckel AM, Vidal-Piñeiro D. Visualization of Brain Statistics With R Packages *ggseg* and *ggseg3d*. *Adv Methods Pract Psychol Sci*. 2020 Dec;3(4):466–83.
62. Benjamini Y, Hochberg Y. Controlling the false discovery rate: a practical and powerful approach to multiple testing. *J R Stat Soc Ser B Stat Methodol*. 1995;(57):289–300.
63. Merritt VC, Meyer JE, Arnett PA. A novel approach to classifying postconcussion symptoms: The application of a new framework to the Post-Concussion Symptom Scale. *J Clin Exp Neuropsychol*. 2015 Aug 9;37(7):764–75.
64. Keyzers C, Gazzola V, Wagenmakers EJ. Using Bayes factor hypothesis testing in neuroscience to establish evidence of absence. *Nat Neurosci*. 2020 Jul;23(7):788–99.

65. Broglio SP, Ferrara MS, Piland SG, Anderson RB. Concussion history is not a predictor of computerised neurocognitive performance. *Br J Sports Med*. 2006 Jul 6;40(9):802–5.
66. Houck Z, Asken B, Clugston J, Perlstein W, Bauer R. Socioeconomic Status and Race Outperform Concussion History and Sport Participation in Predicting Collegiate Athlete Baseline Neurocognitive Scores. *J Int Neuropsychol Soc*. 2018 Jan;24(1):1–10.
67. Kaye S, Sundman MH, Hall EE, Williams E, Patel K, Ketcham CJ. Baseline Neurocognitive Performance and Symptoms in Those With Attention Deficit Hyperactivity Disorders and History of Concussion With Previous Loss of Consciousness. *Front Neurol*. 2019 Apr 24;10:396.
68. Solomon GS, Kuhn A. Relationship Between Concussion History and Neurocognitive Test Performance in National Football League Draft Picks. *Am J Sports Med*. 2014 Apr;42(4):934–9.
69. Alsalaheen B, Stockdale K, Pechumer D, Giessing A, He X, Broglio SP. Cumulative Effects of Concussion History on Baseline Computerized Neurocognitive Test Scores: Systematic Review and Meta-analysis. *Sports Health Multidiscip Approach*. 2017 Jul;9(4):324–32.
70. Belanger HG, Spiegel E, Vanderploeg RD. Neuropsychological performance following a history of multiple self-reported concussions: A meta-analysis. *J Int Neuropsychol Soc*. 2010 Mar;16(2):262–7.
71. Koerte IK, Mayinger M, Muehlmann M, Kaufmann D, Lin AP, Steffinger D, et al. Cortical thinning in former professional soccer players. *Brain Imaging Behav*. 2016 Sep;10(3):792–8.
72. Major B, Symons GF, Sinclair B, O'Brien WT, Costello D, Wright DK, et al. White and Gray Matter Abnormalities in Australian Footballers With a History of Sports-Related Concussion: An MRI Study. *Cereb Cortex*. 2021 Oct 22;31(12):5331–8.
73. Patel JB, Wilson SH, Oakes TR, Santhanam P, Weaver LK. Structural and Volumetric Brain MRI Findings in Mild Traumatic Brain Injury. *Am J Neuroradiol*. 2020 Jan;41(1):92–9.
74. Monti JM, Voss MW, Pence A, McAuley E, Kramer AF, Cohen NJ. History of mild traumatic brain injury is associated with deficits in relational memory, reduced hippocampal volume, and less neural activity later in life. *Front Aging Neurosci* [Internet]. 2013 [cited 2023 Nov 7];5. Available from: <http://journal.frontiersin.org/article/10.3389/fnagi.2013.00041/abstract>
75. Broglio SP, Eckner JT, Paulson HL, Kutcher JS. Cognitive Decline and Aging: The Role of Concussive and Subconcussive Impacts. *Exerc Sport Sci Rev*. 2012 Jul;40(3):138–44.
76. Brett BL, Walton SR, Meier TB, Nencka AS, Powell JR, Giovanello KS, et al. Head Impact Exposure, Gray Matter Volume, and Moderating Effects of Estimated Intelligence Quotient and Educational Attainment in Former Athletes at Midlife. *J Neurotrauma*. 2022 Apr 1;39(7–8):497–507.
77. Mitko A, Rothlein D, Poole V, Robinson M, McGlinchey R, DeGutis J, et al. Individual differences in sustained attention are associated with cortical thickness. *Hum Brain Mapp*. 2019 Aug;40(11):3243–53.

78. Menary K, Collins PF, Porter JN, Muetzel R, Olson EA, Kumar V, et al. Associations between cortical thickness and general intelligence in children, adolescents and young adults. *Intelligence*. 2013 Sep;41(5):597–606.
79. Rogge AK, Röder B, Zech A, Hötting K. Exercise-induced neuroplasticity: Balance training increases cortical thickness in visual and vestibular cortical regions. *NeuroImage*. 2018 Oct;179:471–9.
80. Johnson EB, Rees EM, Labuschagne I, Durr A, Leavitt BR, Roos RAC, et al. The impact of occipital lobe cortical thickness on cognitive task performance: An investigation in Huntington’s Disease. *Neuropsychologia*. 2015 Dec;79:138–46.
81. Kranz MB, Voss MW, Cooke GE, Banducci SE, Burzynska AZ, Kramer AF. The cortical structure of functional networks associated with age-related cognitive abilities in older adults. Ginsberg SD, editor. *PLOS ONE*. 2018 Sep 21;13(9):e0204280.
82. Wojtowicz M, Iverson GL, Silverberg ND, Mannix R, Zafonte R, Maxwell B, et al. Consistency of Self-Reported Concussion History in Adolescent Athletes. *J Neurotrauma*. 2017 Jan 15;34(2):322–7.
83. Corrigan JD, Bogner J. Initial Reliability and Validity of the Ohio State University TBI Identification Method. *J Head Trauma Rehabil*. 2007 Nov;22(6):318–29.