

1 **Lower Risk of Incident Cataracts and Diabetic Retinopathy amongst Individuals Treated with Sodium Glucose**  
2 **Cotransporter-2 Inhibitor Compared to Dipeptidyl Peptidase-4 Inhibitor in Type 2 Diabetes Mellitus**

3 Li Yen Goh BMedSci BMBS FRCOphth \* <sup>1,2</sup>, Oscar Hou In Chou MSc \* <sup>2,8</sup>, Sharen Lee MBChB <sup>2</sup>, Teddy Tai Loy Lee  
4 BPharm <sup>2</sup>, Jeremy Man To Hui <sup>2</sup>, Hugo Pui Hok Him <sup>2</sup>, Wing Tak Wong PhD <sup>3</sup>, Carlin Chang MPhil MRCP <sup>4</sup>, Bernard Man  
5 Yung Cheung MB BChir FRCP <sup>8</sup>, Gary Tse MD PhD FRCP FFPH <sup>#2, 5, 6, 7</sup>, Jiandong Zhou PhD <sup>#9,10</sup>

6 <sup>1</sup> Department of Ophthalmology, King's College Hospital NHS Trust, London, United Kingdom

7 <sup>2</sup> Diabetes Research Unit, Cardiovascular Analytics Group, PowerHealth Research Institute, Hong Kong, China

8 <sup>3</sup> School of Life Sciences, Chinese University of Hong Kong, Hong Kong, China

9 <sup>4</sup> Department of Medicine, Queen Mary Hospital, Hong Kong, China

10 <sup>5</sup> Tianjin Key Laboratory of Ionic-Molecular Function of Cardiovascular Disease, Department of Cardiology, Tianjin  
11 Institute of Cardiology, Second Hospital of Tianjin Medical University, Tianjin 300211, China

12 <sup>6</sup> Kent and Medway Medical School, Canterbury, United Kingdom

13 <sup>7</sup> School of Nursing and Health Studies, Hong Kong Metropolitan University, Hong Kong, China

14 <sup>8</sup> Division of Clinical Pharmacology and Therapeutics, Department of Medicine, Li Ka Shing Faculty of Medicine, The  
15 University of Hong Kong, Hong Kong, China

16 <sup>9</sup> Department of Family Medicine and Primary Care, Li Ka Shing Faculty of Medicine, The University of Hong Kong,  
17 Hong Kong, China

18 <sup>10</sup> Division of Health Sciences, Warwick Medical School, University of Warwick, United Kingdom

19  
20 **\*Joint first author**

21 **# Correspondence to:** NOTE: This preprint reports new research that has not been certified by peer review and should not be used to guide clinical practice.

22 *Gary Tse MD, PhD, FRCP, FFPH*

23 Kent and Medway Medical School, Canterbury, United Kingdom

24 School of Nursing and Health Studies, Hong Kong Metropolitan University, Hong Kong, China

25 Tianjin Institute of Cardiology, The Second Hospital of Tianjin Medical University

26 Tianjin 300211, China

27 Email: [gary.tse@kmms.ac.uk](mailto:gary.tse@kmms.ac.uk)

28  
29 *Jiandong Zhou, PhD,*

30 Department of Family Medicine and Primary Care, Li Ka Shing Faculty of Medicine, The University of Hong Kong, Hong  
31 Kong, China

32 Division of Health Sciences, Warwick Medical School, University of Warwick, United Kingdom

33 Email: [jiandong.zhou@warwick.ac.uk](mailto:jiandong.zhou@warwick.ac.uk)

34 **Synopsis/Precis**

35 Sodium glucose cotransporter-2 inhibitor (SGLT2I) use was associated with lower rates of new onset diabetic  
36 retinopathy and cataracts compared to dipeptidyl peptidase-4 inhibitor (DPP4I) use in patients with type 2 diabetes  
37 mellitus (T2DM) from Hong Kong.

38

39 **What is already known on this topic**

40 Various glucose lowering medications may have additional beneficial or aggravating properties for/against diabetic  
41 retinopathy and cataract formation in diabetic populations beyond their glucose lowering capabilities.

42

43 **What this study adds**

44 This study showed that SGLT2I use was associated with significantly lower rates of new onset cataracts and diabetic  
45 retinopathy when compared to DPP4I use in a T2DM population in Hong Kong. Additionally, to the best of our  
46 knowledge, this is the first population-based study on the effects of SGLT2I and DPP4I use on the development of  
47 cataracts in individuals with T2DM.

48

49 **How this study might affect research, practice or policy**

50 This study provides preliminary data for further evaluation of SGLT2I and DPP4I use in preventing the incidence and  
51 progression of cataracts and diabetic retinopathy in a T2DM individuals. This study may also aid clinicians in deciding  
52 between SGLT2 and DPP4I if microvascular retinal complications and cataracts are a concern in individual cases.

53 **Abstract**

54 **Background/Aims:** Type 2 diabetes mellitus (T2DM) is an extremely prevalent disease with multisystem complications.  
55 We aim to compare the effects of two common glucose lowering medications; sodium glucose co-transporter 2  
56 inhibitors (SGLT2I) and dipeptidyl peptidase-4 inhibitors (DPP4I), on the incidence of diabetic retinopathy and cataracts  
57 in T2DM patients in Hong Kong.

58 **Methods:** Retrospective population-based cohort study of T2DM patients treated with SGLT2I or DPP4I between 1<sup>st</sup>  
59 January 2015 and 31<sup>st</sup> December 2020. Propensity score matching (1:1 ratio) between SGLT2I and DPP4I users was  
60 performed on demographics, past co-morbidities, number of prior hospitalizations, duration from T2DM diagnosis to  
61 initial drug exposure, non-SGLT2I/DPP4I medications (including other anti-diabetes drugs), abbreviated modification of  
62 diet in renal disease, HbA1c, fasting glucose, and their time-weighted means. Sensitivity analysis using a one-year lag  
63 time and competing risk analyses using cause-specific and sub-distribution hazard models were conducted.

64 **Results:** This study cohort included 26 165 SGLT2I and 42 796 DPP4I users (total: N=68 961 patients; 56.43% males,  
65 median age: 62.0 years old (standard deviation (SD): 12.8)). Over a median follow-up of 5.56 years (IQR: 5.24-5.80) and  
66 after propensity score matching (SGLT2I: N=26 165; DPP4I: N=26 165), SGLT2I users had lower incidences of cataract  
67 (4.54% vs. 6.64%, standardised mean difference [SMD]=0.09) and diabetic retinopathy (3.65 vs. 6.19, SMD=0.12)  
68 compared to DPP4I users. SGLT2I use was associated with lower risks of new onset cataract (HR: 0.67, 95% CI: [0.62–  
69 0.72] P<0.0001) and diabetic retinopathy (hazard ratio [HR]: 0.57, 95% confidence interval [CI]: [0.53–0.62], P<0.0001).  
70 These associations remained significant on multivariable Cox regression ;cataract: HR: 0.69, 95% CI: 0.64–0.75  
71 (P<0.0001); diabetic retinopathy: HR: 0.68, 95% CI: 0.63–0.75 (P<0.0001).

72 **Conclusions:** Amongst T2DM patients in Hong Kong, SGLT2I use was associated with lower risks of new onset cataract  
73 or diabetic retinopathy compared to DPP4I use.

74 **Keywords:** Sodium-glucose co-transporter 2 inhibitors; dipeptidyl peptidase-4 inhibitors; diabetes; cataract; diabetic  
75 retinopathy.

## 76 Introduction

77 Type 2 diabetes mellitus (T2DM) is a widespread disease with increasing prevalence globally. It is predicted that by  
78 2030, up to 439 million people worldwide will have T2DM (1). The potential multi-system morbidities and mortality  
79 associated with this disease are well documented. Cataracts and diabetic retinopathy are recognised complications,  
80 with sight threatening capabilities; both feature among the top five causes of global blindness (2). It is estimated that  
81 by 2030, 191 million individuals with T2DM will have diabetic retinopathy (2). There have been several historic  
82 landmark trials which have suggested that intensive blood glucose control (HbA1c <7%) achieved through medication  
83 is associated with lower risks of microvascular diabetic complications (3-6). Additionally, patients with T2DM are at  
84 higher risk of developing cataracts at an earlier age than the general population (7).

85 Metformin is the commonest first-line anti-diabetic agent, and if glycemic control is not optimally achieved, agents  
86 such as dipeptidyl-peptidase 4 inhibitors (DPP4I), pioglitazone and sulphonylureas or dual therapy with sodium-glucose  
87 transport protein 2 inhibitors (SGLT2I) can be prescribed. Additionally, the National Institute for Health and Care  
88 Excellence (NICE) guidance has recently advised that DPP4I or SGLT2I are among the recommended first-line  
89 treatments if metformin is contraindicated or not tolerated (8).

90

## 91 Aims

92 There have been arguments that various glucose lowering agents may have additional protective or aggravating  
93 properties towards ocular microvascular complications and cataract formation beyond their glucose lowering  
94 capabilities (7, 9, 10). This study aims to compare the outcomes of incident diabetic retinopathy and cataract  
95 development between SGLT2I and DPP4I users in a T2DM population in Hong Kong.

96

## 97 Objectives

- 98 1. To compare the outcomes of new-onset cataracts between SGLT2I and DPP4I users in a T2DM population in  
99 Hong Kong identified through the Clinical Data Analysis and Reporting System (CDARS), a city-wide database  
100 that centralises patient information and using the International Classification of Diseases, Ninth Revision,  
101 Clinical Modification (ICD-9) codes, National Centre of Health Statistics, Centers for Disease Control and  
102 Prevention (11)
- 103 2. To compare the outcomes of new-onset diabetic retinopathy between SGLT2I and DPP4I users in a T2DM  
104 population in Hong Kong identified through the CDARS, using ICD-9 codes, National Centre of Health Statistics,  
105 Centers for Disease Control and Prevention (11)

106

## 107 Materials and Methods

### 108 *Study design and population*

109 This study obtained ethics approval from The Joint Chinese University of Hong Kong–New Territories East Cluster  
110 Clinical Research Ethics Committee and The Institutional Review Board of the University of Hong Kong/Hospital  
111 Authority Hong Kong West Cluster. This was a retrospective, territory-wide cohort study of T2DM patients with SGLT2I  
112 or DPP4I use between approximately 1<sup>st</sup> January 2015 and 31<sup>st</sup> December 2020 in Hong Kong. The patients were  
113 identified via ICD-9 codes from the Clinical Data Analysis and Reporting System (CDARS), a city-wide database that  
114 centralises patient information from 43 public hospitals or their associated ambulatory or outpatient facilities managed  
115 by the Hong Kong Hospital Authority to establish comprehensive medical data, including clinical characteristics,  
116 laboratory results, drug treatments and disease diagnosis. CDARS has been previously utilised by our team and other  
117 teams in Hong Kong (12, 13). ICD-9 codes definitions were obtained from the Centers for Disease Prevention and

118 Control website (11).

119 Patients with SGLT2I or DPP4I use during the study period were identified (76 147). Excluded patients: without  
120 complete demographics (N=17), under 18 years old (N=108), with prior diagnoses of cataracts, glaucoma, congenital  
121 anomalies/dystrophies, rubeosis iridis, ocular trauma/inflammation, diabetic eyes disease, retinal vascular occlusion,  
122 age related macular degeneration, ocular malignancy, other proliferative retinopathy or severe eye events (N = 4693),  
123 with prior use of steroids in the eye (N = 1 302) and those who had previous procedure in the eyes for diabetic  
124 retinopathy diabetic macular oedema, anti-vascular endothelial growth factor injections (N = 1 066). Individuals who  
125 took medications which could cause retinopathy; anti-malarials/anti-rheumatics including, quinine,  
126 hydroxychloroquine, mefloquine; anti-psychotics including phenothiazines (fluphenazine, promazine, thioridazine,  
127 mesoridazine), prochlorperazine, chlorpromazine, perphenazine; non-steroidal anti-inflammatory drugs, including  
128 indomethacin, antibiotics including ethambutol; heavy metal antagonists, including desferrioxamine and anti-estrogen  
129 including tamoxifen were also excluded (.

130 Clinical and biochemical data were extracted for the present study. Patient demographics include sex and age at  
131 commencement of initial SGLT2I/DPP4I use. Outcomes of new-onset cataracts and diabetic retinopathy were extracted  
132 if the condition was documented in either one or both eyes, based on ICD-9 coding. Prior co-morbidities were also  
133 extracted, including diabetes with chronic complications, diabetes without chronic complications, gout, heart failure,  
134 hyperlipidaemia, hypertension, hypoglycemia and hyperglycaemia (using hospitalisations as a proxy measure),  
135 ischemic heart disease, liver diseases, acute myocardial infarction, peripheral vascular disease, renal diseases,  
136 stroke/transient ischemic attack, VT/VF/SCD (VT: ventricular tachycardia, VF: ventricular fibrillation, SCD: sudden  
137 cardiac death), anaemia, high Body Mass Index (BMI), and cancer, based on ICD-9 codes. Charlson's standard  
138 comorbidity index was also calculated. Mortality was recorded using the International Classification of Diseases Tenth  
139 Edition (ICD-10) coding (14).

140 Medication histories were also extracted, including the use of metformin, sulphonylurea, insulin, acarbose,  
141 thiazolidinedione, glucagon-like peptide-1 receptor agonists, statins and fibrates. Baseline laboratory data, including  
142 complete blood count, biochemical tests, glycemic and lipid profiles were extracted. In addition, the abbreviated  
143 modification of diet in renal disease (AMDRD) equation was calculated to assess the renal function of the included  
144 patients (15).

145

#### 146 *Outcomes and statistical analysis*

147 The study outcomes were new onset cataract and diabetic retinopathy. Mortality data were obtained from the  
148 Hong Kong Death Registry, a population-based official government registry with the registered death records of all  
149 Hong Kong citizens linked to CDARS. The follow-up period was 31<sup>st</sup> December 2020 or until death, whichever was earlier.

150 Descriptive statistics were used to summarise the baseline, clinical and biochemical characteristics of patients with  
151 SGLT2I and DPP4I treatments. For baseline clinical characteristics, continuous variables were presented as median (95%  
152 confidence interval [CI]/ interquartile range [IQR]) or mean (standard deviation [SD]) and categorical variables were  
153 presented as total number (percentage). Continuous variables were compared using the two-tailed Mann-Whitney U  
154 test, whilst the two-tailed Chi-square test with Yates' correction was used to test 2 × 2 contingency data.

155 Propensity score matching with 1:1 ratio between SGLT2I and DPP4I users based on demographics, prior co-  
156 morbidities and hospitalisations, AMDRD, HBA1c, fasting glucose, use of different medication classes (including other  
157 anti-diabetic drugs) and their time-weighted means, were performed using the nearest neighbor search strategy with  
158 the caliper as 0.1. Univariable and multivariable Cox regression models were used to identify significant risk  
159 predictors for the study outcomes. Competing risk analysis models (cause-specific and sub-distribution) were



160 considered with mortality outcomes. A standardised mean difference (SMD) of less than 0.2 between the treatment  
161 groups post-weighting was considered an adequate balance. The hazard ratio (HR), 95% CI and P-value were  
162 reported. Statistical significance is defined as P-value < 0.05. Statistical analyses were performed with RStudio  
163 software (Version: 1.1.456) and Python (Version: 3.6). Stata software (Version 13.0) was used for propensity score  
164 matching.

165

## 166 **Results**

### 167 *Basic characteristics of the study cohort*

168 This study cohort included 68 961 patients (56.43% males, median age: 62.0 years old (standard deviation (SD) 12.8)  
169 with 26 165 SGLT2I users and 42 796 DPP4I users (**Figure 1**). The baseline and clinical characteristics of SGLT2I and  
170 DPP4I users before and after 1:1 propensity score matching are shown in **Table 1**. After a median follow-up duration  
171 of 5.56 years (IQR: 5.24 - 5.8), in the propensity score-matched cohort (SGLT2I: N=26 165; DPP4I: N=26 165), 2 928  
172 patients (5.59%) developed new onset cataract and 2 577 (4.92%) developed diabetic retinopathy (**Table 2**). SGLT2I  
173 users had lower incidences of new onset cataract, 1 190 (4.54%) vs. 1 738 (6.64%), standardized mean difference  
174 [SMD]=0.09 and new onset diabetic retinopathy 956 (3.65%) vs. 1 621 (6.19%), SMD=0.12, compared to DPP4I users  
175 (**Table 2**). The time to new onset cataracts was similar for both groups (**Table 2**), the mean time in years for SGLT2I was  
176 5.4 years (SD: 0.8) and 5.2 years (SD: 1.1) with a SMD of 0.21. The time to new onset diabetic retinopathy was  
177 also similar for both groups (**Table 2**), the mean time in years for SGLT2I was 5.4 years (SD: 0.8) and 5.2 years (SD: 1.1)  
178 with a SMD of 0.23.

179

### 180 *Univariable, multivariable Cox regression models*

181 The detailed results of univariable Cox regression in the unmatched and matched cohorts are shown in **Table 3** and  
182 **4**. In the matched cohort, compared to DPP4I users, SGLT2I users showed lower risks of new onset cataract (HR: 0.67,  
183 95% CI: [0.62–0.72] P<0.0001) and new onset diabetic retinopathy (HR: 0.57, 95% CI: [0.53–0.62], P<0.0001) (**Table 3**).  
184 After adjustments for significant demographics, co-morbidities as listed above, length of T2 diabetes mellitus, duration  
185 of usage of SGLT2I or DPP4I use, non-SGLT2I/DPP4I diabetic medications, laboratory markers (lipid and glucose markers)  
186 and including sensitivity analyses for chronic kidney disease stage 4 and 5, peritoneal dialysis and haemodialysis, as  
187 well as previous use of insulin and glucagon-like peptide-1 receptor agonists (GLP1-RA). SGLT2I users had a statistically  
188 significantly lower association with new onset cataract (HR: 0.76, 95% CI: [0.67–0.87] P<0.0001) and new onset diabetic  
189 retinopathy (HR:0.51, 95% CI: [0.42 – 0.61, P <0.0001) (**Table 4**). This statistically significantly lower association with  
190 new cataracts was present for common SGLT2I medications including canagliflozin and ertugliflozin, but not  
191 dapagliflozin and empagliflozin. This statistically significantly lower association with new onset diabetic retinopathy was  
192 present for the common SGLT2I medication dapagliflozin but not canagliflozin, ertugliflozin and empagliflozin (**Table**  
193 **4**).

194

### 195 *Subgroup stratification analysis results*

196 As expected, both SGLT2I and DPP4I user above the age of 65 had higher associations with new onset cataracts,  
197 though in both the over 65 group and in the under 65 group, DPP4I users had a stronger association than their SGLT2I  
198 counterparts in developing cataracts (**Figure 2A**). DPP4I users under the age of 65 years the highest association of new  
199 onset diabetic retinopathy than SGLT2I users of all ages and DPP4I users over the age of 65 years, SGLT2I users over  
200 the age of 65 had the lowest association (**Figure 2B**).

201 When stratified by sex, both males and females using DPP4I had a higher association with new onset cataracts  
202 compared to SGLT2 users and within the respective DPP4I and SGLT2I groups, females tended to have a higher  
203 association with developing cataracts (**Figure 2C**). It was found that males and females using DPP4I had a higher risk of  
204 incident diabetic retinopathy than SGLT2I users, but within the DPP4I group, males had a higher association within  
205 developing new diabetic retinopathy, whereas in the SGLT2I group women had a slightly higher association with  
206 developing new diabetic retinopathy (**Figure 2D**).

207

## 208 Discussion

209 This present study found that amongst patients with T2DM, SGLT2I use was statistically significantly associated with  
210 lower incidences new onset cataracts and diabetic retinopathy compared to DPP4I use. The number needed to treat  
211 was 10.08 (abosolute risk reduction (ARR) 0.099); 10.08 type 2 diabetic patients needed to be treated with SGLT2I  
212 versus DPP4I to prevent to the onset of cataracts in one patient (**Supplementary Table 1**). 7.37 (ARR 0.14) type 2  
213 diabetic patients needed to be treated with SGLT2I versus DPP4I to prevent to the onset of diabetic retinopathy in one  
214 patient.

215 Energy derived from glucose maintains transparency in the intraocular lens. Glucose uptake is thought to be either  
216 facilitated through various glucose transporter (GLUT) channels or is sodium-dependent through members of the SGLT  
217 family (16). In animal studies, long-term hyperglycemia therefore causes an upregulation of GLUT and the development  
218 of advanced glycation end products (16). This in turn mediates NADPH oxidation activation, triggering overproduction  
219 of reactive oxygen species, which interrupts the normal functioning of lens fibres leading to opacification (16).  
220 However, it has been observed that the SGLT2I dapagliflozin inhibits these overproductions, therefore preventing  
221 cataract formation (16, 17). Correspondingly, this study found that SGLT2I users had a statistically significantly lower  
222 association with new onset cataract (HR: 0.76, 95% CI: [0.67–0.87 P<0.0001] (**Table 4**). This statistically significantly  
223 lower association with new onset diabetic retinopathy was present for the common SGLT2I medication dapagliflozin  
224 but not canagliflozin, ertugliflozin and empagliflozin (**Table 4**), suggesting that there may be individual SGLT2I molecule  
225 differences which provide factors protective agains cataract formation, though further randomized control trials will  
226 be needed to fully establish this.

227 SGLT2 is expressed on the renal epithelial cells lining the proximal convoluted tubule and serves to resorb glucose  
228 and sodium from the glomerular filtrate (18). SGLT2I represses this resorption and therefore, promotes increased  
229 glycosuria as well as increased sodium and water excretion, thereby reducing blood glucose (18). The benefits of SGLT2i  
230 on reducing blood glucose levels and improving cardiovascular outcomes are well-established (19, 20). However,  
231 SGLT2I may have a direct effect on diabetic retinopathy as SGLT2 receptors are also found on retinal pericytes (18).  
232 When extracellular glucose concentrations rise, SGLT2 receptors are activated, causing an influx of glucose and sodium  
233 (18). The overabundance of sodium causes cell swelling, contraction, and eventually pericyte loss, which is the initial  
234 step in diabetic retinopathy development (18). This mechanism is supported by a study which found that the SGLT2I,  
235 ipragliflozin reduces diabetic retinopathy progression in diabetic Torii fatty rats, in a dose-dependent manner (17). This  
236 study which found that SGLT2I users had a statistically significantly lower association new onset diabetic retinopathy  
237 (HR:0.51, 95% CI: [0.42 – 0.61, P <0.0001] (**Table 4**). In the post-hoc analysis of the Empagliflozin Cardiovascular  
238 Outcome Event Trial in Type 2 Diabetes Mellitus Patients (EMPA-REG OUTCOME) trial, there is no significant statistical  
239 difference in the incidence of diabetic retinopathy between empagliflozin and placebo users, which is in keeping with  
240 this study in that empagliflozin does not seem to be associated with a lower risk of diabetic retinopathy compared to  
241 DPP4I. Recent studies cross-sectional studies in Taiwan and South Korean had similar findings (21, 22). Specifically, Yen  
242 et al found that empagliflozin, dapagliflozin, and canagliflozin were associated with a significantly lower risk of sight-  
243 threatening retinopathy than DPP-4i. This study showed that statistically significantly lower association with new onset

244 diabetic retinopathy was present for the common SGLT2I medication dapagliflozin but not canagliflozin, ertugliflozin  
245 and empagliflozin (**Table 4**). The differences in findings could be explained by variations in the study protocols, but also  
246 largely due to the fact that Yen et al studies sight-threatening retinopathy and this study looks at new-onset diabetic  
247 retinopathy, therefore likely taking into account less severe forms of diabetic retinopathy as well. Dziuba et  
248 al estimated 20-year microvascular complications in patients with T2DM and found that the addition on dapagliflozin  
249 to current treatment was associated with a 9.8% decrease in incident diabetic retinopathy compared with standard  
250 care (23). Therefore, recent evidence may suggest that out of all the SGLT2I medications, dapagliflozin may be  
251 associated better diabetic retinopathy outcomes, though further work will be needed to establish if a true protective  
252 effect is indeed conferred by dapagliflozin. Furthermore, other SGLT2I medications may also be beneficial for other  
253 diabetic complications; an anecdotal report found marked regression of diabetic macular oedema after 16 weeks of  
254 ipragliflozin (24).

255 DPP4I is an enzyme which is ubiquitously expressed on the surface of a variety of cells (25). It is an exopeptidase  
256 which selectively cleaves N-terminal dipeptides from a variety of substrates, including cytokines, growth factors,  
257 neuropeptides, and incretin hormones, rendering them ineffective (25). DPP4I therefore function in diabetes by  
258 increasing the presence of incretin hormones including glucagon-like peptide-1 and glucose-dependent insulintropic  
259 polypeptide, which are major regulators of post-prandial insulin secretion, subsequently prolonging the presence of  
260 insulin after food intake and suppressing glucagon secretion (26). It has been postulated that DPP4I may activate the  
261 stromal cell derived factor-1 alpha Src family tyrosine kinase vascular endothelial cadherin signalling pathway which  
262 causes retina vascular leakage and therefore worsens diabetic retinopathy (9, 27). Additionally, the Trial Evaluating  
263 Cardiovascular Outcomes with Sitagliptin (TECOS) study found diabetic retinopathy events increased by 21.4% in the  
264 treatment group versus placebo, though this was not statistically significant (28). However, other studies suggest that  
265 DPP4I does not increase the risk of diabetic retinopathy and overall blindness (29, 30). On the other hand, there are  
266 other theories that DPP4I may be protective against diabetic retinopathy, supported by animal models (rats) that  
267 proposed that DPP4Is including sitagliptin, vildagliptin and may prevent breakdown of the blood retinal barrier,  
268 inhibit the overexpression of factors including vascular endothelial growth factor and prevent retinal pericyte loss, all  
269 of which contribute to the development and progression of diabetic retinopathy (31-33). Retrospective studies have  
270 shown that DPP4I significantly reduced the progression of diabetic retinopathy in T2DM patients when compared to  
271 other oral anti-diabetic medications including metformin and sulphonyureas (34, 35).

272 Currently, the effect of DPP4I on the lens beyond glycaemic control is poorly understood. To the best of our  
273 knowledge, this is the first population-based study on the effects of SGLT2I and DPP4I use on the development of  
274 cataract amongst patients with T2DM and our results indicate that SGLT2I is associated with lower incidence of  
275 cataracts when compared to DPP4I.

276  
277 Unsurprisingly, SGLT2I and DPP4I users in older age groups (>65 years) had a higher associations with incident  
278 cataracts (**Figure 2A**). Within each age group (over 65 years vs under 65 years) DPP4I users of all ages had a stronger  
279 association than their SGLT2I counterparts in developing cataracts (**Figure 2A**). DPP4I users under the age of 65 had a  
280 higher risk of new onset diabetic retinopathy. DPP4I users over the ages of 65 and SGLT2I user under the age of 65 had  
281 similar cumulative incidence curves with SGLT2I users under the age of 65 ultimately having a slightly higher cumulative  
282 risk from 4.5 years onwards (**Figure 2B**). Large cross sectional studies have determined that a younger age of onset of  
283 diabetes being an independent risk factor for the development of diabetic retinopathy in a Chinese T2DM population,  
284 with the age of 31-45 being the highest risk group, postulating that a that the level of vascular endothelial growth factor  
285 in diabetic patients is higher during an earlier age thereby promoting pathological retinal angiogenesis and  
286 fibrovascular proliferation during development of diabetic retinopathy (36-39).



287 When stratifying by sex, both males and females using DPP4I had a higher association with new onset cataracts  
288 compared to SGLT2 users and within the respective DPP4I and SGLT2I groups, females tended to have a higher  
289 association with developing cataracts (**Figure 2C**). This finding is consistent with evidence that cataracts are more  
290 common in women although the exact reason for this is uncertain (40, 41). It was also found that male and females  
291 using DPP4I had a higher risk of incident diabetic retinopathy than SGLT2I users, but within each drug group, males had  
292 a higher risk than females. Epidemiology studies have recognised that the male gender is an independent risk factor  
293 for developing diabetic retinopathy (42). It was also found that males and females using DPP4I had a higher risk of  
294 incident diabetic retinopathy than SGLT2I users, but within the DPP4I group, males had a higher association within  
295 developing new diabetic retinopathy, whereas in the SGLT2I group women had a slightly higher association with  
296 developing new diabetic retinopathy (**Figure 2F**). Epidemiology studies which found that male sex is an independent  
297 risk factor of the development of diabetic retinopathy (**Figure 2C**) (42). Potential reasons for this include alterations in  
298 ocular blood flow regulation mediated by sex hormones and inflammatory cytokine profiles variations due to sex, in  
299 particular oestrogen in women having a vasodilating effect and testosterone in men having a vasoconstrictive effect  
300 potentially worsening diabetic retinopathy (42, 43). Therefore it was interesting to note in the SGLT2I group that  
301 women had a higher association with new diabetic retinopathy, and possibly could be explained by a modulating effect  
302 of SGLT2I though much further and in depth work will need to be done to investigate this further.

303

#### 304 **Limitations**

305 Several limitations were present in this study. First, given its observational nature, there is an inherent information  
306 bias due to under-coding, coding errors and missing data. In particular Body Mass Index (BMI) was severely undercoded  
307 and therefore unable to be adjusted for in this study. To address this, extensive laboratory results and comorbidities  
308 related to cardiovascular disease and HCC were included to infer possible risk variables indirectly. In addition, patient  
309 drug compliance could only be assessed indirectly through prescription refills. Secondly, residual and post-baseline  
310 confounding may be present despite robust propensity-matching, especially with the unavailability of information on  
311 lifestyle factors. We did try to adjust for severe hypoglycaemia and hyperglycaemia using hospitalisations (for any  
312 reason) as a proxy measure for this but acknowledge that this is not ideal. Additionally, information on the stage of  
313 diabetic retinopathy, progression of diabetic retinopathy, presence or absence of diabetic macular oedema, type of  
314 cataract, and complications from both ocular diseases were not available. Furthermore, surgical data for cataract and  
315 diabetic retinopathy were not available. Data on visual acuity was also unavailable. Hong Kong does have a diabetic  
316 retinopathy screening programme executed by the risk assessment and management programme (RAMP) under the  
317 Hong Kong Hospital Authority, but not all patients joined this programme but those who did, would have the relevant  
318 ICD codes confirmed if diagnosed with cataract or retinopathy (44). It should be emphasized that our big data approach  
319 has limitations and is complementary to other research methods, such as retrospective registry review (45), cross-  
320 sectional recruitment from hospitals (46) or the community (47) or clinical trials (48), which have the advantages of  
321 obtaining specific data fields that are not routinely collected.

322

#### 323 **Conclusions**

324 Among T2DM patients in Hong Kong, SGLT2I use was associated with lower risks of incident cataract and new  
325 onset diabetic retinopathy compared to DPP4I use after multiple adjustment models. This study provides data for  
326 further evaluation of SGLT2I and DPP4I use in preventing the incidence and progression of cataracts and diabetic  
327 retinopathy in a T2DM individuals. This study may also aid clinicians in deciding between SGLT2 and DPP4I if  
328 microvascular complications and cataracts are a concern in individual cases.

329 **Author Declarations**

330 **Ethics approval and consent to participate**

331 This study was approved by the Institutional Review Board of the University of Hong Kong/Hospital Authority Hong  
332 Kong West Cluster (HKU/HA HKWC IRB) (UW-20-250) and complied with the Declaration of Helsinki.

333

334 **Consent for publication**

335 The authors consent to the publication of manuscript.

336

337 **Availability of data and materials**

338 The data that support the findings of this study were provided by the Hong Kong Hospital Authority, but restrictions  
339 apply to the availability of these data, which were used under license for the current study, and so are not publicly  
340 available. Data are however available from the authors upon reasonable request and with permission of Hong Kong  
341 Hospital Authority.

342

343 **Competing interests**

344 The authors declare no competing interest.

345

346 **Funding**

347 This research received no specific grant from any funding agency in the public, commercial, or not-for-profit sectors.

348

349 **Authors' contributions**

350 LYG, JZ: data analysis, data interpretation, statistical analysis, manuscript drafting, critical revision of manuscript

351 OH, TTLL, JMHH, YHAL, CTC, WTW, CC, QPZ, SL: manuscript drafting, critical revision of manuscript

352 GT: study conception, study supervision, project planning, data interpretation, statistical analysis, manuscript drafting,  
353 critical revision of manuscript

354

355 **Acknowledgements**

356 None.

357

358 **Guarantor Statement**

359 All authors approved the final version of the manuscript. GT is the guarantor of this work and, as such, had full access  
360 to all the data in the study and takes responsibility for the integrity of the data and the accuracy of the data analysis.

361

362 **References**

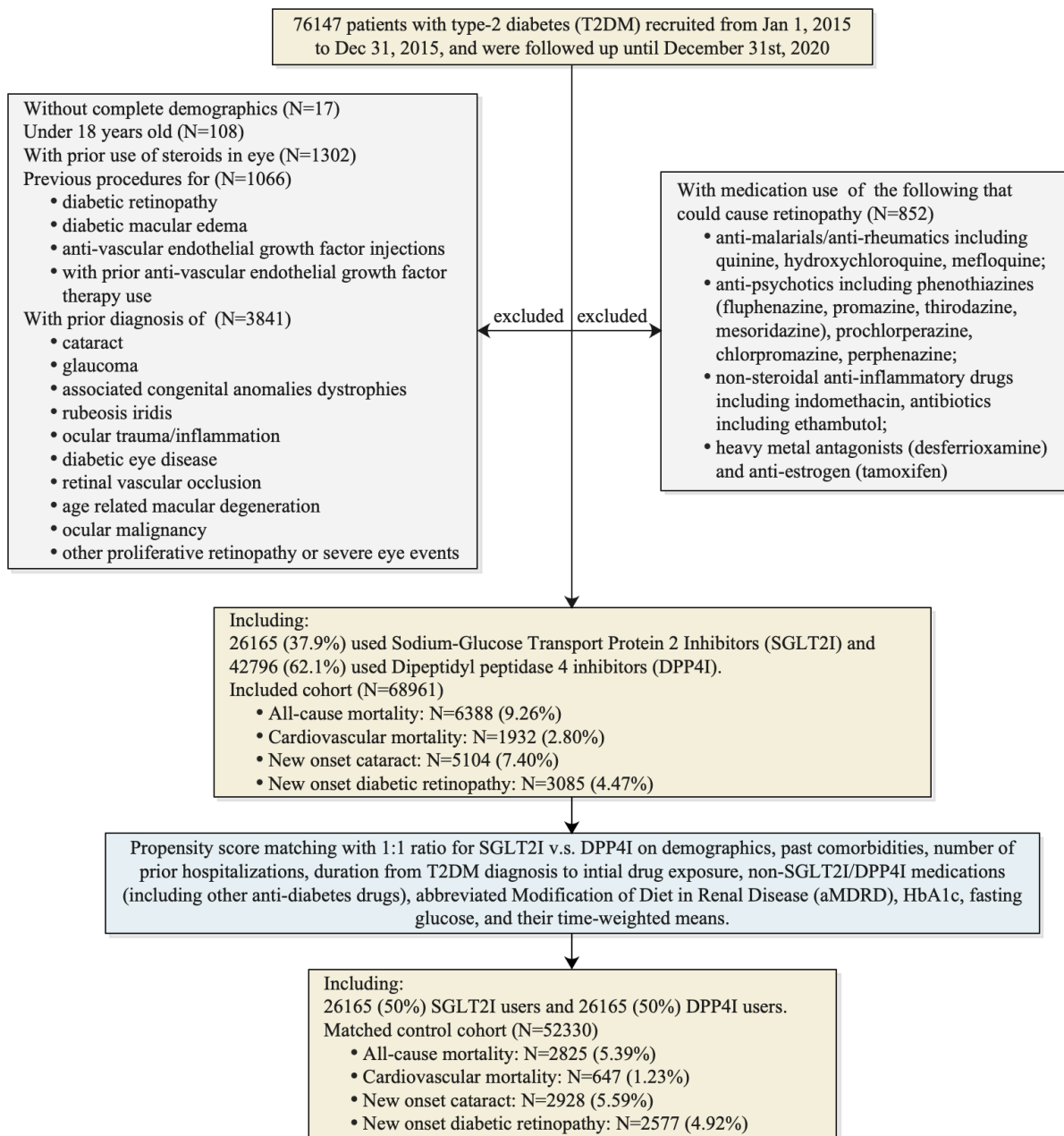
363 1. Khan MAB, Hashim MJ, King JK, Govender RD, Mustafa H, Al Kaabi J. Epidemiology of Type 2 Diabetes - Global  
364 Burden of Disease and Forecasted Trends. J Epidemiol Glob Health. 2020;10(1):107-11.

- 365 2. Collaborators GBaVI, Study VLEGotGBOD. Causes of blindness and vision impairment in 2020 and trends over 30  
366 years, and prevalence of avoidable blindness in relation to VISION 2020: the Right to Sight: an analysis for the Global  
367 Burden of Disease Study. *Lancet Glob Health*. 2021;9(2):e144-e60.
- 368 3. Intensive blood-glucose control with sulphonylureas or insulin compared with conventional treatment and risk of  
369 complications in patients with type 2 diabetes (UKPDS 33). UK Prospective Diabetes Study (UKPDS) Group. *Lancet*.  
370 1998;352(9131):837-53.
- 371 4. Progression of retinopathy with intensive versus conventional treatment in the Diabetes Control and  
372 Complications Trial. Diabetes Control and Complications Trial Research Group. *Ophthalmology*. 1995;102(4):647-61.
- 373 5. Chew EY, Ambrosius WT, Davis MD, Danis RP, Gangaputra S, Greven CM, et al. Effects of medical therapies on  
374 retinopathy progression in type 2 diabetes. *N Engl J Med*. 2010;363(3):233-44.
- 375 6. Patel A, MacMahon S, Chalmers J, Neal B, Billot L, Woodward M, et al. Intensive blood glucose control and  
376 vascular outcomes in patients with type 2 diabetes. *N Engl J Med*. 2008;358(24):2560-72.
- 377 7. Chen YY, Wu TT, Ho CY, Yeh TC, Sun GC, Kung YH, et al. Dapagliflozin Prevents NOX- and SGLT2-Dependent  
378 Oxidative Stress in Lens Cells Exposed to Fructose-Induced Diabetes Mellitus. *Int J Mol Sci*. 2019;20(18).
- 379 8. NICE. Type 2 diabetes in adults: choosing medicines 2022 [cited 2022 9 March]. Available from:  
380 [https://www.nice.org.uk/guidance/ng28/resources/visual-summary-full-version-choosing-medicines-for-firstline-](https://www.nice.org.uk/guidance/ng28/resources/visual-summary-full-version-choosing-medicines-for-firstline-and-further-treatment-pdf-10956472093)  
381 [and-further-treatment-pdf-10956472093](https://www.nice.org.uk/guidance/ng28/resources/visual-summary-full-version-choosing-medicines-for-firstline-and-further-treatment-pdf-10956472093).
- 382 9. Kim NH, Choi J, Choi KM, Baik SH, Lee J, Kim SG. Dipeptidyl peptidase-4 inhibitor use and risk of diabetic  
383 retinopathy: A population-based study. *Diabetes Metab*. 2018;44(4):361-7.
- 384 10. Lahoti S, Nashawi M, Sheikh O, Massop D, Mir M, Chilton R. Sodium-glucose co-transporter 2 inhibitors and  
385 diabetic retinopathy: insights into preservation of sight and looking beyond. *Cardiovasc Endocrinol Metab*.  
386 2021;10(1):3-13.
- 387 11. Prevention CfDca. The International Classification of Diseases, Ninth Revision, Clinical Modification (ICD-9-  
388 CM) <https://www.cdc.gov/nchs/icd/icd10.htm2021> [cited 2022 26 July]. 9th Edition:[Available from:  
389 <https://www.cdc.gov/nchs/icd/icd10.htm>.
- 390 12. Liu Y, Ling L, Wong SH, Wang MH, Fitzgerald JR, Zou X, et al. Outcomes of respiratory viral-bacterial co-infection in  
391 adult hospitalized patients. *EClinicalMedicine*. 2021;37:100955.
- 392 13. Zhou J, Wang X, Lee S, Wu WKK, Cheung BMY, Zhang Q, et al. Proton pump inhibitor or famotidine use and severe  
393 COVID-19 disease: a propensity score-matched territory-wide study. *Gut*. 2020.
- 394 14. Prevention CfDca. International Classification of Diseases,Tenth Revision (ICD-10) 2021 [cited 2022 26 July].  
395 Available from: <https://www.cdc.gov/nchs/icd/icd10.htm>.
- 396 15. Levey AS, Coresh J, Greene T, Stevens LA, Zhang YL, Hendriksen S, et al. Using standardized serum creatinine  
397 values in the modification of diet in renal disease study equation for estimating glomerular filtration rate. *Ann Intern*  
398 *Med*. 2006;145(4):247-54.
- 399 16. Zhang S, Chai FY, Yan H, Guo Y, Harding JJ. Effects of N-acetylcysteine and glutathione ethyl ester drops on  
400 streptozotocin-induced diabetic cataract in rats. *Mol Vis*. 2008;14:862-70.
- 401 17. Takakura S, Toyoshi T, Hayashizaki Y, Takasu T. Effect of ipragliflozin, an SGLT2 inhibitor, on progression of  
402 diabetic microvascular complications in spontaneously diabetic Torii fatty rats. *Life Sci*. 2016;147:125-31.
- 403 18. Wakisaka M, Kitazono T, Kato M, Nakamura U, Yoshioka M, Uchizono Y, et al. Sodium-coupled glucose transporter  
404 as a functional glucose sensor of retinal microvascular circulation. *Circ Res*. 2001;88(11):1183-8.
- 405 19. Sfairopoulos D, Zhang N, Wang Y, Chen Z, Letsas KP, Tse G, et al. Association between sodium-glucose  
406 cotransporter-2 inhibitors and risk of sudden cardiac death or ventricular arrhythmias: a meta-analysis of randomized  
407 controlled trials. *Europace*. 2022;24(1):20-30.

- 408 20. Zhang N, Wang Y, Tse G, Korantzopoulos P, Letsas KP, Zhang Q, et al. Effect of sodium-glucose cotransporter-2  
409 inhibitors on cardiac remodelling: a systematic review and meta-analysis. *Eur J Prev Cardiol.* 2022;28(17):1961-73.
- 410 21. Chung YR, Ha KH, Lee K, Kim DJ. Effects of sodium-glucose cotransporter-2 inhibitors and dipeptidyl peptidase-4  
411 inhibitors on diabetic retinopathy and its progression: A real-world Korean study. *PLoS One.* 2019;14(10):e0224549.
- 412 22. Yen FS, Wei JC, Yu TS, Hung YT, Hsu CC, Hwu CM. Sodium-Glucose Cotransporter 2 Inhibitors and Risk of  
413 Retinopathy in Patients With Type 2 Diabetes. *JAMA Netw Open.* 2023;6(12):e2348431.
- 414 23. Dziuba J, Alperin P, Racketa J, Illoeje U, Goswami D, Hardy E, et al. Modeling effects of SGLT-2 inhibitor  
415 dapagliflozin treatment versus standard diabetes therapy on cardiovascular and microvascular outcomes. *Diabetes  
416 Obes Metab.* 2014;16(7):628-35.
- 417 24. Yoshizumi H, Ejima T, Nagao T, Wakisaka M. Recovery from Diabetic Macular Edema in a Diabetic Patient After  
418 Minimal Dose of a Sodium Glucose Co-Transporter 2 Inhibitor. *Am J Case Rep.* 2018;19:462-6.
- 419 25. Röhrborn D, Wronkowitz N, Eckel J. DPP4 in Diabetes. *Front Immunol.* 2015;6:386.
- 420 26. Pratley RE, Salsali A. Inhibition of DPP-4: a new therapeutic approach for the treatment of type 2 diabetes. *Curr  
421 Med Res Opin.* 2007;23(4):919-31.
- 422 27. Lee JF, Zeng Q, Ozaki H, Wang L, Hand AR, Hla T, et al. Dual roles of tight junction-associated protein, zonula  
423 occludens-1, in sphingosine 1-phosphate-mediated endothelial chemotaxis and barrier integrity. *J Biol Chem.*  
424 2006;281(39):29190-200.
- 425 28. Green JB, Bethel MA, Armstrong PW, Buse JB, Engel SS, Garg J, et al. Effect of Sitagliptin on Cardiovascular  
426 Outcomes in Type 2 Diabetes. *N Engl J Med.* 2015;373(3):232-42.
- 427 29. Hernández C, Bogdanov P, Solà-Adell C, Sampedro J, Valeri M, Genís X, et al. Topical administration of DPP-IV  
428 inhibitors prevents retinal neurodegeneration in experimental diabetes. *Diabetologia.* 2017;60(11):2285-98.
- 429 30. Hippisley-Cox J, Coupland C. Diabetes treatments and risk of amputation, blindness, severe kidney failure,  
430 hyperglycaemia, and hypoglycaemia: open cohort study in primary care. *BMJ.* 2016;352:i1450.
- 431 31. Dietrich N, Kolibabka M, Busch S, Bugert P, Kaiser U, Lin J, et al. The DPP4 Inhibitor Linagliptin Protects from  
432 Experimental Diabetic Retinopathy. *PLoS One.* 2016;11(12):e0167853.
- 433 32. Maeda S, Yamagishi S, Matsui T, Nakashima S, Ojima A, Nishino Y, et al. Beneficial effects of vildagliptin on retinal  
434 injury in obese type 2 diabetic rats. *Ophthalmic Res.* 2013;50(4):221-6.
- 435 33. Gonçalves A, Marques C, Leal E, Ribeiro CF, Reis F, Ambrósio AF, et al. Dipeptidyl peptidase-IV inhibition prevents  
436 blood-retinal barrier breakdown, inflammation and neuronal cell death in the retina of type 1 diabetic rats.  
437 *Biochimica et Biophysica Acta (BBA) - Molecular Basis of Disease.* 2014;1842(9):1454-63.
- 438 34. Chung YR, Park SW, Kim JW, Kim JH, Lee K. PROTECTIVE EFFECTS OF DIPEPTIDYL PEPTIDASE-4 INHIBITORS ON  
439 PROGRESSION OF DIABETIC RETINOPATHY IN PATIENTS WITH TYPE 2 DIABETES. *Retina.* 2016;36(12):2357-63.
- 440 35. Kolaczynski WM, Hankins M, Ong SH, Richter H, Clemens A, Toussi M. Microvascular Outcomes in Patients with  
441 Type 2 Diabetes Treated with Vildagliptin vs. Sulfonylurea: A Retrospective Study Using German Electronic Medical  
442 Records. *Diabetes Ther.* 2016;7(3):483-96.
- 443 36. Zou W, Ni L, Lu Q, Zou C, Zhao M, Xu X, et al. Diabetes Onset at 31–45 Years of Age is Associated with an  
444 Increased Risk of Diabetic Retinopathy in Type 2 Diabetes. *Scientific Reports.* 2016;6(1):38113.
- 445 37. Wong J, Molyneaux L, Constantino M, Twigg SM, Yue DK. Timing is everything: age of onset influences long-term  
446 retinopathy risk in type 2 diabetes, independent of traditional risk factors. *Diabetes Care.* 2008;31(10):1985-90.
- 447 38. Croley AN, Zwetsloot KA, Westerkamp LM, Ryan NA, Pendergast AM, Hickner RC, et al. Lower capillarization, VEGF  
448 protein, and VEGF mRNA response to acute exercise in the vastus lateralis muscle of aged vs. young women. *J Appl  
449 Physiol (1985).* 2005;99(5):1872-9.

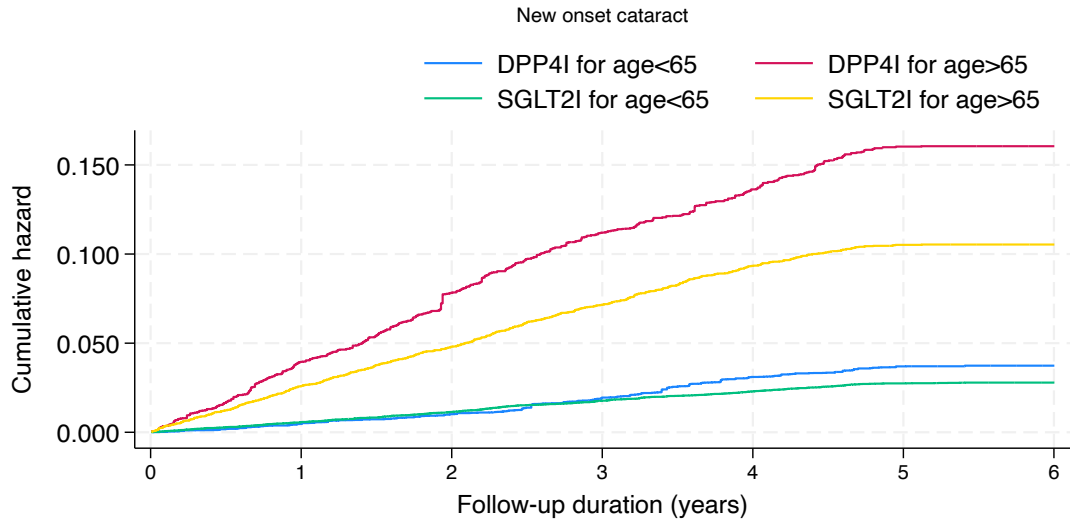


- 450 39. Chiarelli F, Spagnoli A, Basciani F, Tumini S, Mezzetti A, Cipollone F, et al. Vascular endothelial growth factor  
451 (VEGF) in children, adolescents and young adults with Type 1 diabetes mellitus: relation to glycaemic control and  
452 microvascular complications. *Diabet Med.* 2000;17(9):650-6.
- 453 40. Klein BE, Klein R, Linton KL. Prevalence of age-related lens opacities in a population. The Beaver Dam Eye Study.  
454 *Ophthalmology.* 1992;99(4):546-52.
- 455 41. Zhang JS, Xu L, Wang YX, You QS, Wang JD, Jonas JB. Five-year incidence of age-related cataract and cataract  
456 surgery in the adult population of greater Beijing: the Beijing Eye Study. *Ophthalmology.* 2011;118(4):711-8.
- 457 42. Cherchi S, Gigante A, Spanu M, Contini P, Meloni G, Fois M, et al. Sex-Gender Differences in Diabetic Retinopathy.  
458 *International Journal of Diabetology.* 2020;1:1-10.
- 459 43. Siddiqui MA, Khan MF, Carline TE. Gender differences in living with diabetes mellitus. *Mater Sociomed.*  
460 2013;25(2):140-2.
- 461 44. Lian JX, Gangwani RA, McGhee SM, Chan CK, Lam CL, Wong DS, et al. Systematic screening for diabetic  
462 retinopathy (DR) in Hong Kong: prevalence of DR and visual impairment among diabetic population. *Br J Ophthalmol.*  
463 2016;100(2):151-5.
- 464 45. Tse G, Zhou J, Woo SWD, Ko CH, Lai RWC, Liu T, et al. Multi-modality machine learning approach for risk  
465 stratification in heart failure with left ventricular ejection fraction  $\leq$  45. *ESC Heart Fail.* 2020.
- 466 46. Lui MM, Mak JC, Lai AY, Hui CK, Lam JC, Lam DC, et al. The Impact of Obstructive Sleep Apnea and Tobacco  
467 Smoking on Endothelial Function. *Respiration.* 2016;91(2):124-31.
- 468 47. Ip MS, Lam WK, Lai AY, Ko FW, Lau AC, Ling SO, et al. Reference values of diffusing capacity of non-smoking  
469 Chinese in Hong Kong. *Respirology.* 2007;12(4):599-606.
- 470 48. Lai AY, Fong DY, Lam JC, Weaver TE, Ip MS. Linguistic and psychometric validation of the Chinese version of the  
471 self-efficacy measures for sleep apnea questionnaire. *Sleep Med.* 2013;14(11):1192-8.



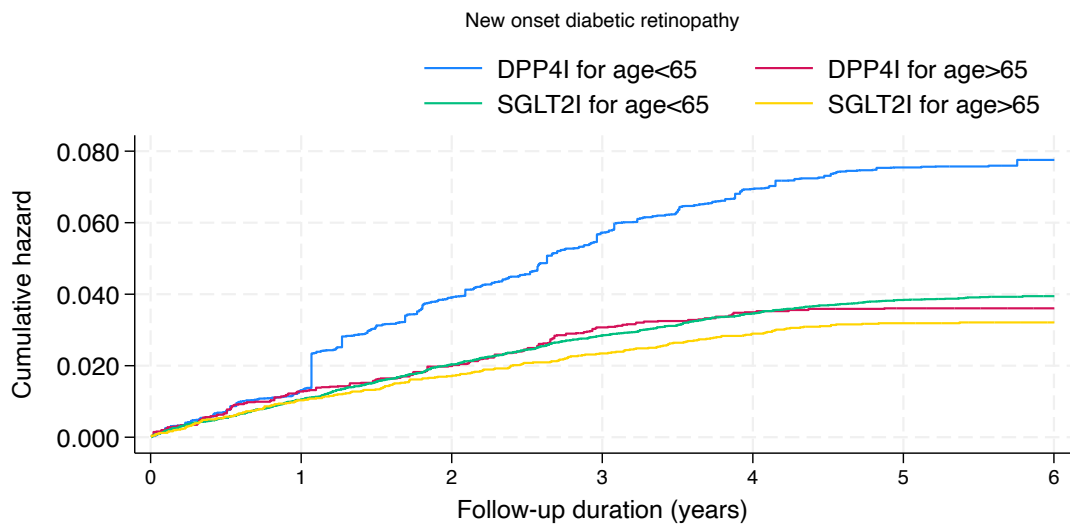
**Figure 1. Flowchart of data processing.**

SGLT2I: sodium glucose cotransporter-2 inhibitor; DPP4I: dipeptidyl peptidase-4 inhibitor.



Number at risk	0	1	2	3	4	5	6
DPP4I for age<65	18680	18588	18462	17997	17607	17213	120
DPP4I for age>65	7485	7177	6779	6301	5821	5437	31
SGLT2I for age<65	19549	19438	19319	19170	18997	18782	104
SGLT2I for age>65	6616	6447	6282	6085	5854	5624	38

Cumulative incidence curve by drug use after propensity score matching

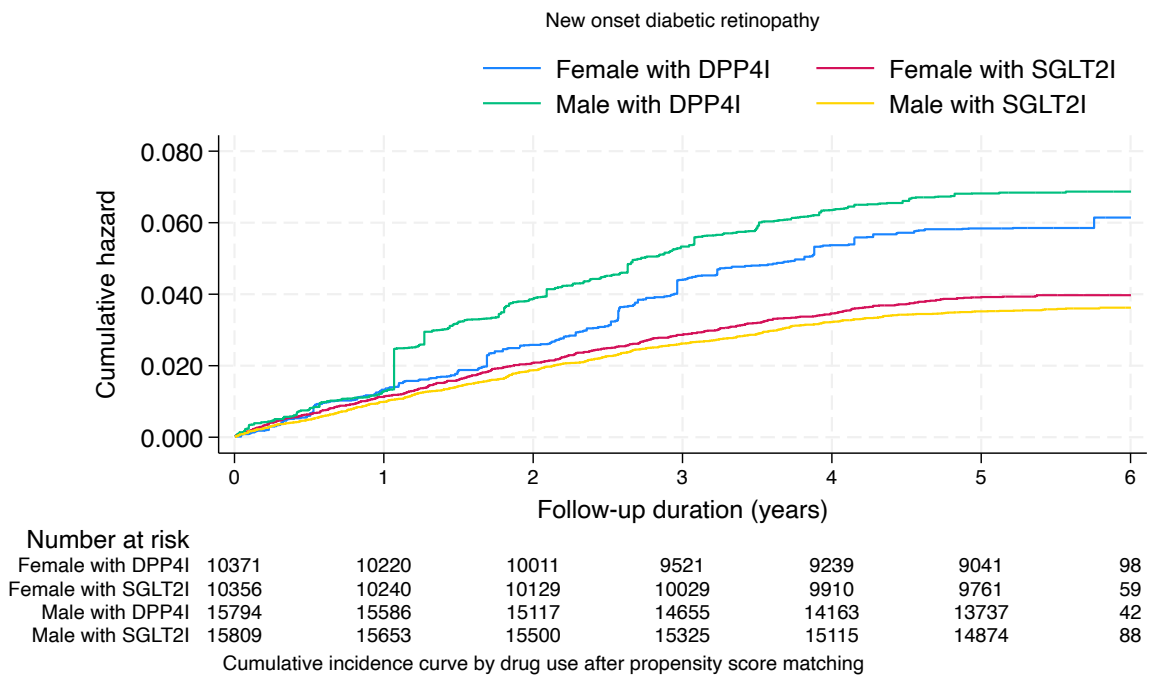
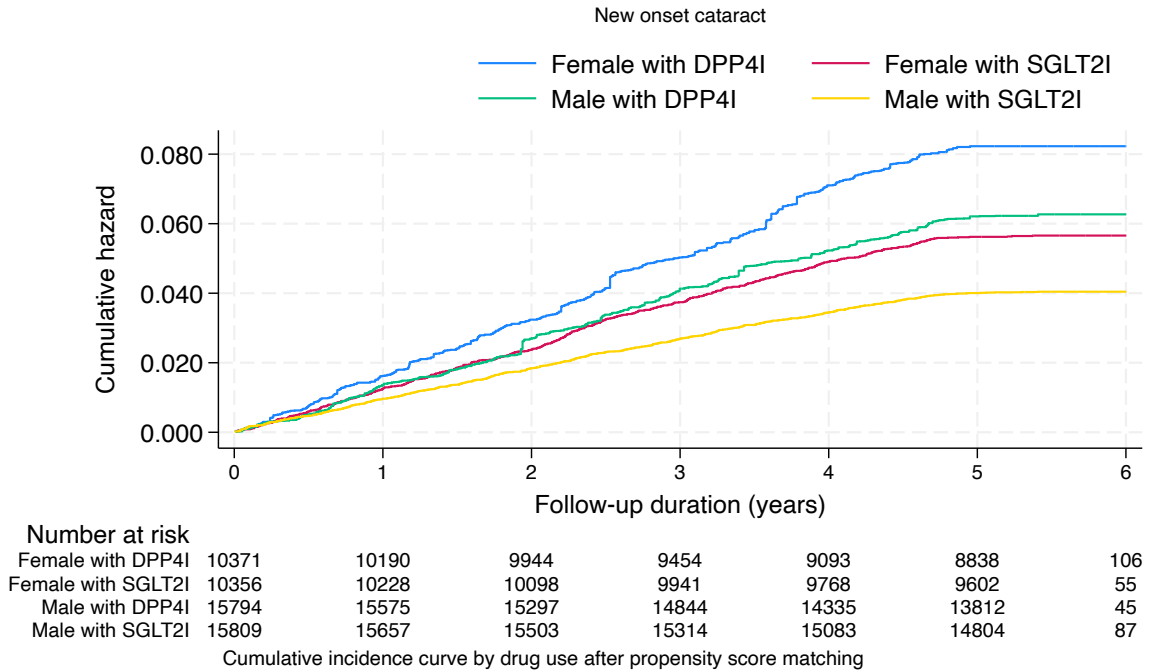


Number at risk	0	1	2	3	4	5	6
DPP4I for age<65	18680	18434	17938	17329	16946	16600	109
DPP4I for age>65	7485	7372	7190	6847	6456	6178	31
SGLT2I for age<65	19549	19345	19148	18967	18781	18587	104
SGLT2I for age>65	6616	6548	6481	6387	6244	6048	43

Cumulative incidence curve by drug use after propensity score matching

**Figure 2. Age-drug specific cumulative incidence curves of new onset cataract and new onset diabetic retinopathy in the matched cohort (1:1)**

SGLT2I: sodium glucose cotransporter-2 inhibitor; DPP4I: dipeptidyl peptidase-4 inhibitor.



**Figure 3. Sex-drug specific cumulative incidence curves of new onset cataract and new onset diabetic retinopathy in the matched cohort (1:1)**  
 SGLT2I: sodium glucose cotransporter-2 inhibitor; DPP4I: dipeptidyl peptidase-4 inhibitor.



**Table 1. Baseline and clinical characteristics of patients with SGLT2I v.s. DPP4I use before and after propensity score matching (1:1).**

\* for SMD $\geq$ 0.1; SGLT2I: sodium glucose cotransporter-2 inhibitor; DPP4I: dipeptidyl peptidase-4 inhibitor; SD: standard deviation; CV: Coefficient of variation; MDRD: modification of diet in renal disease; ACEI: angiotensin-converting enzyme inhibitors; ARB: angiotensin II receptor blockers.

Characteristics	Before matching				After matching			
	All (N=68961) Mean(SD);N or Count(%)	SGLT2I (N=26165) Mean(SD);N or Count(%)	DPP4I (N=42796) Mean(SD);N or Count(%)	SMD	All (N=52330) Mean(SD);N or Count(%)	SGLT2I (N=26165) Mean(SD);N or Count(%)	DPP4I (N=26165) Mean(SD);N or Count(%)	SMD
<b>Demographics</b>								
Male gender	38919(56.43%)	15809(60.42%)	23110(54.00%)	0.13	31603(60.39%)	15809(60.42%)	15794(60.36%)	<0.01
Female gender	30042(43.56%)	10356(39.57%)	19686(45.99%)	0.13	20727(39.60%)	10356(39.57%)	10371(39.63%)	<0.01
Baseline age, years	62.0(12.8)	57.6(11.4)	64.7(12.9)	0.58*	58.4(11.2);n=52330	57.6(11.4);n=26165	59.2(10.9);n=26165	0.15
18-50	10963(15.89%)	5856(22.38%)	5107(11.93%)	0.28*	10277(19.63%)	5856(22.38%)	4421(16.89%)	0.14
50-60	20149(29.21%)	9374(35.82%)	10775(25.17%)	0.23*	19142(36.57%)	9374(35.82%)	9768(37.33%)	0.03
60-70	19949(28.92%)	7628(29.15%)	12321(28.79%)	0.01	15743(30.08%)	7628(29.15%)	8115(31.01%)	0.04
70-80	11326(16.42%)	2656(10.15%)	8670(20.25%)	0.28*	5660(10.81%)	2656(10.15%)	3004(11.48%)	0.04
>80	6584(9.54%)	658(2.51%)	5926(13.84%)	0.42*	1515(2.89%)	658(2.51%)	857(3.27%)	0.05
Financial aid	2299(3.33%)	988(3.77%)	1311(3.06%)	0.04	1913(3.65%)	988(3.77%)	925(3.53%)	0.01
<b>Past comorbidities</b>								
Charlson's standard comorbidity index	2.0(1.5)	1.5(1.2)	2.2(1.5)	0.51*	1.6(1.2);n=52330	1.5(1.2);n=26165	1.6(1.2);n=26165	0.1
Duration from earliest diabetes mellitus diagnosis date to baseline date, day	6.5(5.0)	6.47(4.93)	6.47(5.05)	<0.01	6.4(4.8);n=52330	6.5(4.9);n=26165	6.2(4.6);n=26165	0.05
Number of hospitalizations	1.2(0.8)	1.3(1.1)	1.2(0.6)	0.17	1.3(0.9);n=52330	1.3(1.1);n=26165	1.2(0.8);n=26165	0.13

Diabetes with chronic complication	259(0.37%)	82(0.31%)	177(0.41%)	0.0 2	164(0.31%)	82(0.31%)	82(0.31%)	<0. 01
Diabetes without chronic complication	1154(1.67%)	507(1.93%)	647(1.51%)	0.0 3	1000(1.91%)	507(1.93%)	493(1.88%)	<0. 01
Hyperlipidaemia	49328(71.53%)	19558(74.74%)	29770(69.56%)	0.1 2	39243(74.99%)	19558(74.74%)	19685(75.23%)	0.0 1
Hypertension	40033(58.05%)	19111(73.04%)	20922(48.88%)	0.5 1*	36271(69.31%)	19111(73.04%)	17160(65.58%)	0.1 6
Hypoglycemia	434(0.62%)	73(0.27%)	361(0.84%)	0.0 8	146(0.27%)	73(0.27%)	73(0.27%)	<0. 01
Autoimmune disease tissue	695(1.00%)	257(0.98%)	438(1.02%)	<0. 01	512(0.97%)	257(0.98%)	255(0.97%)	<0. 01
Heart failure	2011(2.91%)	642(2.45%)	1369(3.19%)	0.0 4	1272(2.43%)	642(2.45%)	630(2.40%)	<0. 01
Acute myocardial infarction	1844(2.67%)	856(3.27%)	988(2.30%)	0.0 6	1693(3.23%)	856(3.27%)	837(3.19%)	<0. 01
Atrial fibrillation	1679(2.43%)	570(2.17%)	1109(2.59%)	0.0 3	1134(2.16%)	570(2.17%)	564(2.15%)	<0. 01
Stroke/transient ischemic attack	1931(2.80%)	608(2.32%)	1323(3.09%)	0.0 5	1208(2.30%)	608(2.32%)	600(2.29%)	<0. 01
Ischemic heart disease	6688(9.69%)	3174(12.13%)	3514(8.21%)	0.1 3	6022(11.50%)	3174(12.13%)	2848(10.88%)	0.0 4
Peripheral vascular disease	359(0.52%)	101(0.38%)	258(0.60%)	0.0 3	202(0.38%)	101(0.38%)	101(0.38%)	<0. 01
Anemia	2426(3.51%)	578(2.20%)	1848(4.31%)	0.1 2	1141(2.18%)	578(2.20%)	563(2.15%)	<0. 01
Liver diseases	2680(3.88%)	1206(4.60%)	1474(3.44%)	0.0 6	2330(4.45%)	1206(4.60%)	1124(4.29%)	0.0 2
Renal diseases	4324(6.27%)	1035(3.95%)	3289(7.68%)	0.1 6	2049(3.91%)	1035(3.95%)	1014(3.87%)	<0. 01
Gout	1870(2.71%)	585(2.23%)	1285(3.00%)	0.0 5	1162(2.22%)	585(2.23%)	577(2.20%)	<0. 01
Cancer	1755(2.54%)	515(1.96%)	1240(2.89%)	0.0 6	1028(1.96%)	515(1.96%)	513(1.96%)	<0. 01
Overweight, obesity and hyperalimentation	675(0.97%)	278(1.06%)	397(0.92%)	0.0 1	627(1.19%)	278(1.06%)	349(1.33%)	0.0 2

Drug abuse	1117(1.61%)	180(0.68%)	937(2.18%)	0.1 3	359(0.68%)	180(0.68%)	179(0.68%)	<0. 01
<b>Medications</b>								
SGLT2I v.s. DPP4I	26165(37.94%)	26165(100.00%)	0(0.00%)	inf*	26165(50.00%)	26165(100.00%)	0(0.00%)	inf*
SGLT2I frequency	-	7.1(9.4)	-	-	-	7.1(9.4)	-	-
DPP4I frequency	-	-	5.5(7.5)	-	-	-	5.8(7.0)	-
SGLT2I duration, days	-	501.4(624.4)	-	-	-	501.4(624.4)	-	-
DPP4I duration, days	-	-	521.8(301.3)	-	-	-	544.2(320.3)	-
Number of anti-diabetic drug classes	4.4(0.9)	4.5(1.0);	4.4(0.8)	0.1 7	4.5(0.9)	4.51(0.96)	4.54(0.9)	0.0 3
Metformin	62207(90.20%)	24372(93.14%)	37835(88.40%)	0.1 6	48821(93.29%)	24372(93.14%)	24449(93.44%)	0.0 1
Sulphonylurea	44457(64.46%)	19118(73.06%)	25339(59.20%)	0.3 0*	37909(72.44%)	19118(73.06%)	18791(71.81%)	0.0 3
Insulin	33417(48.45%)	12806(48.94%)	20611(48.16%)	0.0 2	25608(48.93%)	12806(48.94%)	12802(48.92%)	<0. 01
Acarbose	2141(3.10%)	961(3.67%)	1180(2.75%)	0.0 5	1887(3.60%)	961(3.67%)	926(3.53%)	0.0 1
Thiozolidinedone	13513(19.59%)	6889(26.32%)	6624(15.47%)	0.2 7*	12972(24.78%)	6889(26.32%)	6083(23.24%)	0.0 7
Glucagon-like peptide-1 receptor agonists	3234(4.68%)	1578(6.03%)	1656(3.86%)	0.1	2917(5.57%)	1578(6.03%)	1339(5.11%)	0.0 4
ACEI/ARB	24467(35.47%)	9417(35.99%)	15050(35.16%)	0.0 2	17904(34.21%)	9417(35.99%)	8487(32.43%)	0.0 7
Antibiotics	45870(66.51%)	16933(64.71%)	28937(67.61%)	0.0 6	34407(65.75%)	16933(64.71%)	17474(66.78%)	0.0 4
Aspirin	13916(20.17%)	5311(20.29%)	8605(20.10%)	<0. 01	10697(20.44%)	5311(20.29%)	5386(20.58%)	0.0 1
Anticoagulants	18640(27.02%)	7250(27.70%)	11390(26.61%)	0.0 2	14853(28.38%)	7250(27.70%)	7603(29.05%)	0.0 3
Antiplatelets	17222(24.97%)	6226(23.79%)	10996(25.69%)	0.0 4	11987(22.90%)	6226(23.79%)	5761(22.01%)	0.0 4
Lipid-lowering drugs	28876(41.87%)	11346(43.36%)	17530(40.96%)	0.0 5	23454(44.81%)	11346(43.36%)	12108(46.27%)	0.0 6
Statins and fibrates	37249(54.01%)	16484(63.00%)	20765(48.52%)	0.2 9*	31793(60.75%)	16484(63.00%)	15309(58.50%)	0.0 9

Diuretics	31618(45.84%)	10291(39.33%)	21327(49.83%)	0.2 1*	21064(40.25%)	10291(39.33%)	10773(41.17%)	0.0 4
Alpha-blockers	8162(11.83%)	2774(10.60%)	5388(12.58%)	0.0 6	5116(9.77%)	2774(10.60%)	2342(8.95%)	0.0 6
Beta-blockers	16127(23.38%)	6690(25.56%)	9437(22.05%)	0.0 8	11327(21.64%)	6690(25.56%)	4637(17.72%)	0.1 9
Calcium channel blockers	12538(18.18%)	5216(19.93%)	7322(17.10%)	0.0 7	9409(17.98%)	5216(19.93%)	4193(16.02%)	0.1
Anti-cancer drugs	2319(3.36%)	515(1.96%)	1804(4.21%)	0.1 3	1033(1.97%)	515(1.96%)	518(1.97%)	<0. 01
Antipsychotics	3290(4.77%)	1082(4.13%)	2208(5.15%)	0.0 5	2123(4.05%)	1082(4.13%)	1041(3.97%)	0.0 1
Non-steroidal anti-inflammatory drugs	14046(20.36%)	5637(21.54%)	8409(19.64%)	0.0 5	11072(21.15%)	5637(21.54%)	5435(20.77%)	0.0 2
Antimalarials/Anti-rheumatics	18(0.02%)	9(0.03%)	9(0.02%)	0.0 1	18(0.03%)	9(0.03%)	9(0.03%)	<0. 01
Antiestrogen	1092(1.58%)	395(1.50%)	697(1.62%)	0.0 1	788(1.50%)	395(1.50%)	393(1.50%)	<0. 01
<b>Calculated biomarkers</b>								
Abbreviated MDRD, mL/min/1.73m <sup>2</sup>	88.3(27.2);n=563 70	90.5(24.0);n=216 76	87.0(28.9);n=346 94	0.1 3	92.1(25.3);n=436 19	90.5(24.0);n=216 76	93.7(26.4);n=219 43	0.1 3
Kidney failure (<15)	90.0(0.13%)	14.0(0.05%)	76.0(0.17%)	0.0 4	24.0(0.04%)	14.0(0.05%)	10.0(0.03%)	0.0 1
Severe dysfunction (15-30)	644.0(0.93%)	66.0(0.25%)	578.0(1.35%)	0.1 2	138.0(0.26%)	66.0(0.25%)	72.0(0.27%)	<0. 01
Moderate dysfunction (30-60)	7722.0(11.19%)	1804.0(6.89%)	5918.0(13.82%)	0.2 3*	4149.0(7.92%)	1804.0(6.89%)	2345.0(8.96%)	0.0 8
Mild renal dysfunction (60-90)	20964.0(30.39%)	9245.0(35.33%)	11719.0(27.38%)	0.1 7	16444.0(31.42%)	9245.0(35.33%)	7199.0(27.51%)	0.1 7
Kidney damage with normal GFR (>90)	26950.0(39.08%)	10547.0(40.30%)	16403.0(38.32%)	0.0 4	22864.0(43.69%)	10547.0(40.30%)	12317.0(47.07%)	0.1 4
Neutrophil-to-lymphocyte ratio	3.5(4.6);n=28169	3.0(3.8);n=11569	3.8(5.1);n=16600	0.1 8	3.2(3.9);n=22245	3.0(3.8);n=11569	3.3(4.0);n=10676	0.0 9
Platelet-to-lymphocyte ratio	142.6(149.0);n=2 8168	132.7(153.9);n=1 1568	149.5(145.1);n=1 6600	0.1 1	135.2(138.5);n=2 2244	132.7(153.9);n=1 1568	137.9(119.5);n=1 0676	0.0 4



Triglyceride-glucose index	7.6(0.7);n=47474	7.7(0.7);n=18820	7.5(0.7);n=28654	0.1 6	7.6(0.7);n=37778	7.7(0.7);n=18820	7.6(0.7);n=18958	0.0 2
<b>Complete blood counts</b>								
Mean corpuscular volume, fL	87.2(7.5);n=3488 3	86.8(7.1);n=1459 5	87.5(7.7);n=2028 8	0.1	86.9(7.2);n=2753 8	86.8(7.1);n=1459 5	87.1(7.3);n=1294 3	0.0 5
Eosinophil, x10 <sup>9</sup> /L	0.2(0.2);n=28148 6	0.22(0.2);n=1156 6	0.22(0.27);n=165 82	<0. 01	0.2(0.2);n=22241 6	0.22(0.2);n=1156 6	0.21(0.21);n=106 75	<0. 01
Lymphocyte, x10 <sup>9</sup> /L	2.0(0.9);n=28173	2.2(0.9);n=11571	1.9(0.9);n=16602	0.2 5*	2.1(0.9);n=22248	2.2(0.9);n=11571	2.1(0.8);n=10677	0.0 9
Neutrophil, x10 <sup>9</sup> /L	5.3(2.8);n=28173	5.2(2.5);n=11571	5.4(3.0);n=16602	0.1	5.2(2.6);n=22248	5.2(2.5);n=11571	5.3(2.8);n=10677	0.0 7
White cell count, x10 <sup>9</sup> /L	8.0(3.0);n=34895	7.98(2.67);n=146 02	8.03(3.17);n=202 93	0.0 2	8.0(2.7);n=27546	8.0(2.7);n=14602	8.1(2.8);n=12944	0.0 3
Mean cell haemoglobin, pg	29.4(3.0);n=3488 3	29.2(2.9);n=1459 5	29.6(3.1);n=2028 8	0.1 1	29.3(2.9);n=2753 8	29.2(2.9);n=1459 5	29.4(2.9);n=1294 3	0.0 6
Platelet, x10 <sup>9</sup> /L	239.7(71.6);n=34 892	243.6(67.7);n=14 600	236.9(74.2);n=20 292	0.0 9	243.4(69.2);n=27 543	243.6(67.7);n=14 600	243.2(70.8);n=12 943	0.0 1
Red cell count, x10 <sup>12</sup> /L	4.6(0.7);n=34883	4.8(0.6);n=14595	4.4(0.7);n=20288	0.4 8*	4.7(0.6);n=27538	4.8(0.6);n=14595	4.6(0.6);n=12943	0.1 7
<b>Liver and renal functions</b>								
Potassium, mmol/L	4.3(0.5);n=56184	4.3(0.43);n=2162 5	4.35(0.49);n=345 59	0.1 2	4.3(0.5);n=43500	4.3(0.43);n=2162 5	4.32(0.47);n=218 75	0.0 4
Albumin, g/L	41.8(3.9);n=4356 1	42.6(3.3);n=1826 9	41.3(4.2);n=2529 2	0.3 3*	42.4(3.6);n=3511 3	42.6(3.3);n=1826 9	42.1(3.9);n=1684 4	0.1 2
Sodium, mmol/L	139.3(2.9);n=562 12	139.2(2.7);n=216 30	139.3(3.0);n=345 82	0.0 4	139.2(2.8);n=435 29	139.2(2.7);n=216 30	139.3(2.9);n=218 99	0.0 4
Urea, mmol/L	6.3(3.2);n=56205	5.7(2.0);n=21628	6.8(3.7);n=34577	0.3 7*	5.9(2.3);n=43533	5.7(2.0);n=21628	6.1(2.5);n=21905	0.1 7
Protein, g/L	74.0(5.4);n=4092 4	74.4(5.0);n=1721 4	73.6(5.7);n=2371 0	0.1 4	74.3(5.2);n=3292 7	74.4(5.0);n=1721 4	74.2(5.5);n=1571 3	0.0 5
Creatinine, umol/L	90.8(64.3);n=563 70	78.5(26.5);n=216 76	98.4(78.3);n=346 94	0.3 4*	82.8(37.3);n=436 19	78.5(26.5);n=216 76	87.0(45.1);n=219 43	0.2 3*
Alkaline phosphatase, U/L	76.9(31.8);n=436 84	74.4(26.1);n=182 77	78.8(35.1);n=254 07	0.1 4	76.0(30.1);n=352 14	74.4(26.1);n=182 77	77.8(33.7);n=169 37	0.1 1
Aspartate transaminase, U/L	28.5(38.9);n=172 28	29.0(29.2);n=731 5	28.2(44.7);n=991 3	0.0 2	29.3(32.0);n=141 47	29.0(29.2);n=731 5	29.6(34.8);n=683 2	0.0 2

Alanine transaminase, U/L	29.9(32.3);n=372 28	32.8(29.1);n=155 42	27.9(34.2);n=216 86	0.1 6	32.3(29.2);n=292 64	32.8(29.1);n=155 42	31.8(29.4);n=137 22	0.0 4
Bilirubin, umol/L	11.4(7.0);n=4348 4	11.5(6.2);n=1823 9	11.3(7.5);n=2524 5	0.0 3	11.5(6.8);n=3505 4	11.5(6.2);n=1823 9	11.4(7.5);n=1681 5	0.0 3
<b>Lipid profiles and variabilities</b>								
Triglyceride, mmol/L	1.8(1.6);n=52972	1.8(1.8);n=20733	1.7(1.5);n=32239	0.0 8	1.8(1.7);n=41681	1.84(1.84);n=207 33	1.82(1.6);n=2094 8	0.0 1
SD of triglyceride	0.5(1.1);n=27700	0.52(1.17);n=128 11	0.48(0.96);n=148 89	0.0 4	0.5(1.2);n=23798	0.52(1.17);n=128 11	0.54(1.15);n=109 87	0.0 2
Time weighted mean of triglyceride, mmol/L	1.8(1.0);n=34408	1.9(1.0);n=15475	1.8(1.0);n=18933	0.0 5	1.9(1.1);n=28874	1.87(1.01);n=154 75	1.91(1.17);n=133 99	0.0 4
Low-density lipoprotein, mmol/L	2.4(0.8);n=51979	2.4(0.8);n=20328	2.4(0.8);n=31651	<0. 01	2.4(0.8);n=40705	2.4(0.8);n=20328 77	2.42(0.81);n=203 77	0.0 3
SD of low-density lipoprotein	0.4(0.3);n=26815	0.3(0.3);n=12417	0.4(0.4);n=14398	0.1 1	0.4(0.3);n=22933	0.3(0.3);n=12417	0.4(0.3);n=10516	0.0 7
Time weighted mean of low-density lipoprotein, mmol/L	2.3(0.6);n=32155	2.31(0.57);n=144 00	2.34(0.59);n=177 55	0.0 7	2.3(0.6);n=27077	2.31(0.57);n=144 00	2.29(0.61);n=126 77	0.0 3
High-density lipoprotein, mmol/L	1.2(0.3);n=52888	1.16(0.31);n=206 95	1.21(0.34);n=321 93	0.1 4	1.2(0.3);n=41576	1.16(0.31);n=206 95	1.18(0.34);n=208 81	0.0 4
SD of high-density lipoprotein	0.1(0.1);n=26618	0.09(0.08);n=122 83	0.11(0.09);n=143 35	0.1 4	0.1(0.1);n=22821	0.09(0.08);n=122 83	0.1(0.09);n=1053 8	0.0 6
Time weighted mean of high-density lipoprotein, mmol/L	1.2(0.2);n=33930	1.16(0.19);n=153 52	1.18(0.21);n=185 78	0.0 8	1.2(0.2);n=28648	1.16(0.19);n=153 52	1.16(0.21);n=132 96	0.0 2
Total cholesterol, mmol/L	4.4(1.0);n=53023	4.4(1.0);n=20756	4.3(1.0);n=32267	<0. 01	4.4(1.0);n=41737	4.35(1.02);n=207 56	4.38(0.99);n=209 81	0.0 3
SD of total cholesterol	0.4(0.4);n=27725	0.4(0.4);n=12810	0.5(0.4);n=14915	0.0 9	0.4(0.5);n=23768	0.4(0.4);n=12810	0.5(0.5);n=10958	0.0 8
Time weighted mean of total cholesterol, mmol/L	4.3(0.6);n=34444	4.3(0.6);n=15502	4.4(0.6);n=18942	0.0 8	4.3(0.6);n=28918	4.31(0.61);n=155 02	4.34(0.66);n=134 16	0.0 5
<b>Glucose profiles and variabilities</b>								
Hemoglobin A1C, %	8.1(1.5);n=55189	8.2(1.6);n=21276	7.9(1.5);n=33913	0.2	8.2(1.6);n=42918	8.2(1.6);n=21276	8.1(1.6);n=21642	0.1
SD of hemoglobin A1C	0.6(0.7);n=39096	0.56(0.75);n=167 73	0.57(0.71);n=223 23	0.0 1	0.6(0.7);n=31986	0.56(0.75);n=167 73	0.57(0.68);n=152 13	0.0 1
Time weighted mean of HbA1C, %	7.8(1.4);n=40840	7.9(1.4);n=17586	7.8(1.4);n=23254	0.0 6	7.9(1.4);n=33286	7.9(1.4);n=17586	7.8(1.5);n=15700	0.0 3

Fasting glucose, mmol/L.1	9.0(3.8);n=50051	9.2(3.6);n=19579	8.8(3.9);n=30472	0.1	9.2(3.8);n=39423	9.2(3.6);n=19579	9.1(4.0);n=19844	0.0 1
SD of fasting glucose	1.9(2.2);n=31412	1.8(1.9);n=14172	2.1(2.4);n=17240	0.1 2	1.9(2.0);n=26258	1.8(1.9);n=14172	2.0(2.2);n=12086	0.0 8
Time weighted mean of fasting glucose, mmol/L	7.8(3.0);n=37620	7.9(2.9);n=16425	7.8(3.0);n=21195	0.0 3	7.9(3.0);n=31114	7.9(2.9);n=16425	8.0(3.0);n=14689	0.0 5

**Table 2. Outcome characteristics in patients by SGLT2I v.s. DPP4I use before and after propensity score matching (1:1).**

\* for SMD $\geq$ 0.1; SGLT2I: sodium glucose cotransporter-2 inhibitor; DPP4I: dipeptidyl peptidase-4 inhibitor.

Characteristics	Before matching				After matching			
	All (N=68961) Mean(SD); N or Count(%)	SGLT2I (N=26165) Mean(SD);N or Count(%)	DPP4I (N=42796) Mean(SD); N or Count(%)	SMD	All (N=52330) Mean(SD);N or Count(%)	SGLT2I (N=26165) Mean(SD); N or Count(%)	DPP4I (N=26165) Mean(SD); N or Count(%)	SMD
All-cause mortality	6388(9.26%)	727(2.77%)	5661(13.22%)	0.39*	2825(5.39%)	727(2.77%)	2098(8.01%)	0.23*
Time to mortality, years	5.4(0.7)	5.5(0.4)	5.3(0.9)	0.38*	5.5(0.6)	5.5(0.4)	5.4(0.7)	0.26*
Cardiovascular mortality	1932(2.80%)	148(0.56%)	1784(4.16%)	0.24*	647(1.23%)	148(0.56%)	499(1.90%)	0.12
Time to CAD mortality, years	5.4(0.7)	5.5(0.4)	5.3(0.9)	0.38*	5.5(0.6)	5.5(0.4)	5.4(0.7)	0.26*
New onset cataract	5104(7.40%)	1190(4.54%)	3914(9.14%)	0.18	2928 (5.59%)	1190 (4.54%)	1738 (6.64%)	0.09
Time to cataract, year	5.1(1.2)	5.4(0.8)	5.0(1.3)	0.36*	5.3(1.0)	5.4(0.8)	5.2(1.1)	0.21*
New onset diabetic retinopathy	3085(4.47%)	956(3.65%)	2129(4.97%)	0.07	2577(4.92%)	956(3.65%)	1621(6.19%)	0.12
Time to Diabetic retinopathy, year	5.2(1.0)	5.4(0.8)	5.1(1.1)	0.3*	5.3(1.0)	5.4(0.8)	5.2(1.1)	0.23*

**Table 3. Univariate Cox regression models in the match cohort.**

\* for  $SMD \geq 0.1$ ; HR: hazard ratio; CI: confidence interval; SGLT2I: sodium glucose cotransporter-2 inhibitor; DPP4I: dipeptidyl peptidase-4 inhibitor.

	<b>New onset cataract HR [95% CI];P value</b>	<b>New onset diabetic retinopathy HR [95% CI];P value</b>
SGLT2I v.s. DPP4I	0.67[0.62-0.72];<0.0001***	0.57[0.53-0.62];<0.0001***
Dapagliflozin v.s. DPP4I	0.77[0.71-0.84];<0.0001***	0.63[0.57-0.69];<0.0001***
Empagliflozin v.s. DPP4I	0.76[0.67-0.87];<0.0001***	0.73[0.64-0.84];<0.0001***
Canagliflozin v.s. DPP4I	0.68[0.60-0.78];<0.0001***	0.72[0.63-0.83];<0.0001***
Ertugliflozin v.s. DPP4I	0.68[0.56-0.82];<0.0001***	0.69[0.56-0.84];0.0002***

**Table 4. Cox univariate sensitivity analysis with exclusion of patient's chronic kidney disease stage 4 or 5 (eGFR <30), peritoneal dialysis or haemodialysis and patients who used insulin and/or GLP-1 RA in the matched cohort**

\* for  $p \leq 0.05$ , \*\* for  $p \leq 0.01$ , \*\*\* for  $p \leq 0.001$ ; HR: hazard ratio; CI: confidence interval; SGLT2I: sodium glucose cotransporter-2 inhibitor; DPP4I: dipeptidyl peptidase-4 inhibitor.

	<b>New onset cataract HR [95% CI]; P value</b>	<b>New onset diabetic retinopathy HR [95% CI]; P value</b>
SGLT2I v.s. DPP4I	0.76[0.67-0.87];<0.0001***	0.51[0.42-0.61];<0.0001***
Dapagliflozin v.s. DPP4I	0.95[0.82-1.10];0.4824	0.54[0.42-0.68];<0.0001***
Empagliflozin v.s. DPP4I	0.75[0.60-0.95];0.0149	0.65[0.47-0.91];0.0127*
Canagliflozin v.s. DPP4I	0.64[0.51-0.81];0.0002***	0.71[0.52-0.98];0.0372*
Ertugliflozin v.s. DPP4I	0.61[0.43-0.87];0.0060**	0.54[0.32-0.90];0.0192*