

1 **Comparing Cadence vs. Machine Learning based Physical Activity Intensity**
2 **Classifications: Variations in the Associations of Physical Activity with Mortality**

3

4 Le Wei^{1,2}, Matthew N. Ahmadi^{1,2}, Raaj Kishore Biswas^{1,2}, Stewart G. Trost^{3,4}, Emmanuel
5 Stamatakis^{1,2*}

6

7 **Author Details**

8 1. Mackenzie Wearables Research Hub, Charles Perkins Centre, The University of
9 Sydney, Sydney, Australia

10 2. School of Health Sciences, Faculty of Medicine and Health, The University of Sydney,
11 Sydney, Australia

12 3. School of Human Movement and Nutrition Sciences, The University of Queensland,
13 St Lucia, Queensland, Australia

14 4. Children's Health Queensland Hospital and Health Service. Centre for Children's
15 Health Research, South Brisbane, Queensland, Australia

16

17 Corresponding author

18 Professor Emmanuel Stamatakis

19 Address: Hub D17, Charles Perkins Centre L6 West, the University of Sydney, New South
20 Wales, Australia.

21 Email address: emmanuel.stamatakis@sydney.edu.au

22

23 **Word count:**

24 **Main text:** 4019 words

25 **Abstract:** 281 words

26

27 **Acknowledgements**

28 This research has been conducted using the UK Biobank Resource under Application
29 Number 25813. The authors would like to thank all the participants and professionals
30 contributing to the UK Biobank.

31 **Funding**

32 This study was funded by the National Health and Medical Research Council (NHMRC)
33 through a Leadership level 2 Fellowship to Emmanuel Stamatakis (APP1194510).

34 **Authors' contributions**

35 E.S., M.N.A, L.W., R.K.B, and S.G.T contributed to the study conception and design, and
36 interpretation of data. Data preparation was performed by M.N.A. The draft of the manuscript
37 and data analysis were performed by L.W. All authors revised it critically and gave final
38 approval and agreed to be accountable for all aspects of the work, ensuring integrity and
39 accuracy.

40 **Conflict of Interest Statement**

41 The authors declare that they have no conflict of interest.

42 **Ethics approval**

43 Our study utilized data from the UK Biobank, which has received ethical approval from the
44 National Research Ethics Service (Ref 11/NW/0382).

45 **Informed Consent**

46 Informed consent was obtained from all individual participants included in the study.

47 **Data Availability Statement**

48 This research has been conducted using the UK Biobank Resource under Application
49 Number 25813. Bona fide researchers can register and apply to use the UK Biobank dataset
50 at <http://ukbiobank.ac.uk/register-apply/>.

51

52

53

54

55 **Abstract**

56

57 *Background:* Step cadence-based and machine-learning (ML) methods have been used to
58 classify physical activity (PA) intensity in health-related research. This study examined the
59 association of intensity-specific PA daily duration with all-cause (ACM) and CVD mortality
60 varied among cadence-based and ML methods in 68,561 UK Biobank participants.

61 *Methods:* The two-stage-ML method categorized activity type and then intensity. The one-
62 level-cadence method (1LC) derived intensity duration using all detected steps and cadence
63 thresholds of ≥ 100 steps/min (moderate intensity) and ≥ 130 steps/min (vigorous intensity).
64 The two-level-cadence method (2LC) detected ambulatory activities and then steps with the
65 same cadence thresholds.

66 *Results:* The 2LC exhibited the most pronounced association at the lower end of the duration,
67 e.g., the 2LC showed the smallest minimum moderate-to-vigorous PA (MVPA) duration
68 (amount associated with 50% of optimal risk reduction) (2LC vs 1LC vs ML, 2.8 minutes/day
69 [95% CI: 2.6, 2.8] vs 11.1 [10.8, 11.4] vs 14.9 [14.6, 15.2]) while exhibiting similar
70 corresponding ACM hazard ratio (HR) among methods (HR: 0.83 [95% CI: 0.78, 0.88] vs
71 0.80 [0.76, 0.85] vs 0.82 [0.76, 0.87]). The ML elicited the greatest mortality risk reduction,
72 e.g., for VPA-ACM association, 2LC vs 1LC vs ML: median, 2.0 minutes/day [95% CI: 2.0,
73 2.0] vs 6.9 [6.9, 7.0] vs 3.2 [3.2, 3.2]; HR, 0.69 [0.61, 0.79] vs 0.68 [0.60, 0.77] vs 0.53 [0.44,
74 0.64]. After standardizing duration, the ML exhibited the most pronounced associations, e.g.,
75 for MPA-CVD mortality, 2LC vs 1LC vs ML, standardized minimum-duration: -0.77 vs -
76 0.85 vs -0.94; HR 0.82 [0.72, 0.92] vs 0.79 [0.69, 0.90] vs 0.77 [0.69, 0.85].

77 *Conclusion:* The 2LC exhibited the most pronounced association with mortality at the lower
78 end of the duration. The ML method provided the most pronounced association with
79 mortality after standardizing the durations.

80

81 **Key words:** all-cause mortality, CVD mortality, moderate-to-vigorous intensity, step
82 cadence, walking

83

84

85

86

87 1. Introduction

88

89 Current PA guidelines recommend weekly 150-300 moderate-to-vigorous intensity physical
90 activity (MVPA) mins, or 75-150 vigorous intensity PA (VPA) mins and emphasize health
91 benefits of all PA bouts regardless of their duration^{1,2}. However, most of these guidelines
92 were derived from self-reports which typically fail to recognize the health value of short PA
93 bout (e.g., < 10-minute bout)³, thus affecting the accuracy of the estimates of the health
94 impact of different PA intensities. Recent studies have shown that the short intermittent
95 activity bursts were beneficially associated with long term health risks (e.g., all-cause^{4,5},
96 CVD⁴ and cancer mortality risk⁴, and CVD⁵ and cancer⁶ incidence). The advancements in
97 wearables measurement technology and methods for processing and analyzing large volumes
98 of accelerometer data provide researchers with multiple options for classifying PA intensity
99 within the short bout. Besides the more recent machine learning (ML) classification models⁷,
100 other methods include cut-points or thresholds based on proprietary activity counts⁸ or
101 gravitational units⁹, or step cadence thresholds¹⁰.

102 The step cadence of ≥ 100 steps/min has been examined as a heuristic threshold for
103 moderate-to-vigorous intensity for adults in both treadmill and overground walking¹⁰⁻¹⁴.
104 Similarly, a cadence of ≥ 130 steps/min has been proposed as the heuristic threshold for
105 vigorous intensity among young and middle-aged adults^{10,11}. The step cadence methods are
106 feasible with any accelerometer providing researchers with a relatively simple method to
107 estimate the association of duration of PA across intensities with health outcomes in free-
108 living samples. Prior studies have applied cadence thresholds to examine the association of
109 PA intensities duration with various health outcomes¹⁵⁻²¹. For instance, a harmonized meta-
110 analysis including 15 international accelerometry cohorts (13 waist, 1 thigh, 1 wrist) found
111 that the association of the duration of moderate or higher intensity (defined as ≥ 100
112 steps/min) with mortality was attenuated after adjusting for total step counts, albeit remained
113 significant¹⁵. Moreover, step is the fundamental unit of the ambulatory PA, step cadence-
114 based thresholds may help people understand and monitor their required higher intensity PA
115 minutes (e.g., at least 150 MPA minutes per week)^{1,2,22} and support more people to be
116 sufficiently active²³.

117 ML methods have gained considerable attention in PA research recent years due to the
118 increasing application of accelerometers and accessibility to raw data (gravitational
119 acceleration)²⁴. By training a model with “features” of the accelerometer signal, such as time
120 and frequency domain, that are extracted from the raw data, ML models classify patterns in

121 the raw accelerometer signal corresponding to an activity type or intensity²⁴. ML algorithm
122 has the advantage of high accuracy in identifying different PAs and intensities in both lab and
123 free-living environments^{7,25,26}. Recent observational studies applying the ML method
124 showed that approximately daily 2-3 short bouts or 3-4 minutes of vigorous intermittent
125 lifestyle PA (VILPA) or 1-5 MV-ILPA minutes were associated with substantially reduced
126 mortality risk, and cancer and CVD incidence⁴⁻⁶, amounts that are considerably lower than
127 current major PA guidelines recommendations (at least 75 weekly VPA mins or 150 MPA
128 mins)^{1,2,22} primarily based on questionnaire-based data. Prior research indicated that the ML
129 method demonstrated significantly higher agreement with ground-truth PA intensity than cut-
130 point (counts) methods for preschool children in free-living environment²⁷.

131 A recent unpublished study of ours²⁸ indicated that the intensity-specific PA daily
132 duration estimates based on step cadence thresholds were substantially different to those
133 derived using the ML methods (mean absolute difference for MVPA: 24.2 mins/day). Such
134 differences prompt the question of whether the PA intensity-mortality associations differ by
135 intensity classification method in free-living conditions. To our knowledge, no previous study
136 has examined the extent to which association between the duration of the PA intensity and
137 mortality varies according to multiple methods derived by processing the accelerometer data
138 to estimate PA intensity. Such information is important for guiding analytic and resource
139 allocation decisions in observational research and for understanding the role of PA intensity
140 classification in health research. The purpose of this study was to compare the association of
141 intensity-specific daily PA duration with all-cause and CVD mortality, derived from two step
142 cadence-based and one ML method, in a large UK cohort with wrist-worn accelerometer data.
143

144 **2. Materials and Methods**

145

146 *2.1 Participants*

147 The UK Biobank is a large prospective cohort with 502,616 aged 40-69 years UK adults
148 recruited between 2006 and 2010²⁹. Participants completed baseline measurements and
149 provided written consent to use their data. The ethical approval was provided by the UK
150 National Health Service, National Research Ethics Service (Ref 11/NW/0382).

151 From 2013 to 2015, 103,684 UK biobank participants were sent and wore the Axivity
152 AX3 wrist-worn triaxial accelerometer (Newcastle upon Tyne, UK) on their dominant wrist
153 for 7 days continuously. The AX3 was initialized to capture triaxial acceleration data at a

154 sampling frequency of 100 Hz and a dynamic range of ± 8 g. A monitoring day was
155 considered valid if the wear time exceeded 16 hours. Participants returned the devices by
156 mail and the data were calibrated ³⁰ and non-wear periods were identified ³¹. Participants
157 needed at least four valid monitoring days including a minimum of one valid weekend day to
158 be included in our study. As previous study ⁷, we excluded participants with missing
159 covariate data, CVD and cancer history (ascertained through hospital admission records), and
160 outcome events occurring within one year after the PA assessment. In total, 68,561
161 participants were included in our study (**Supplementary figure 1**).

162

163 *2.2 Physical activity intensity classification methods*

164

165 *2.2.1 Machine learning method*

166 This two-stage classifier first applied a validated random forest (RF) classifier trained on 48
167 time and frequency domain features to categorize each 10-second window into one of the
168 four PA classes: sedentary (sitting still, reclined, etc.), standing utilitarian movements
169 (standing stationary/active standing: washing dishes, ironing a shirt, etc.), walking activities
170 (active commuting, ambulatory gardening, etc.), or running/energetic activity (chasing
171 around with children, etc.) ⁷. Time windows classified as walking were assigned to different
172 PA intensity bands using ambulatory acceleration thresholds and those classified as
173 running/energetic activities were classified as vigorous (≥ 6 METs). Time windows classified
174 as walking with normalized gravitational units < 100 milli g's were considered LPA (< 3
175 METs) and those classified as walking with normalized gravitation units ≥ 100 milli g and $<$
176 400 milli g were considered MPA (3-6 METs). The time windows classified as walking with
177 normalized gravitation units ≥ 400 milli g walking activities were considered vigorous PA
178 (VPA) (≥ 6 METs) ^{32,33}. Windows classified as sedentary behaviors were considered
179 sedentary (< 1.5 METs). We calculated the mean daily duration across intensities by
180 averaging over valid monitoring days.

181

182 *2.2.2 One-level cadence method*

183 We classified PA intensities using a validated one-level cadence method ¹⁰ (1LC). We
184 implemented an open-source Windowed Peak Detection algorithm on the raw acceleration
185 signal to detect steps ³⁴. This algorithm demonstrated high accuracy (Mean 89%, SD 12%)
186 during treadmill and outdoor walking ³⁴. We calculated the step counts within each 60-second
187 window and classified MPA, VPA and MVPA based on previously published step cadence

188 thresholds (10–14). MPA was defined as a cadence ≥ 100 and < 130 steps/min, VPA was
189 defined as ≥ 130 steps/min, MVPA was defined as ≥ 100 steps/min. We considered a cadence
190 of ≥ 20 and < 100 steps/min as light-PA (LPA). We used 20 steps/min as the lower cut-point
191 for LPA to avoid misclassifying shuffling or pottering steps that occur in the 60-second
192 window.

193

194 *2.2.3 Two-level cadence method*

195 Accurate step detection is challenging in free-living environments. A study showed that
196 routinely above 20% mean average percentage error (MAPE) existed in step counting
197 accuracy in wrist-worn accelerometer cohort studies³⁵, likely due to the random wrist and
198 upper limb movement (e.g., eating, brushing teeth, typing keyboard) misclassified as “steps”.
199 To improve step counting accuracy, a hybrid two-level cadence method was developed (2LC).
200 Firstly, we identified stepping activities (e.g., walking, running) by applying the RF classifier
201 used in the ML method. Secondly, we summed up the step counts in 10-second windows
202 classified as walking within each non-overlapping one minute interval, and classified that
203 minute as LPA, MPA and VPA based on the same cadence thresholds applied in 1LC¹⁰.
204 Then we added up the minutes corresponding to each intensity level, respectively, and
205 calculated the mean daily duration across intensities by averaging over valid monitoring days.

206

207 *2.3 Outcome ascertainment*

208 Participants were followed up until 30 November 2022. The deaths records were obtained
209 through linkage with the National Health Service (NHS) Digital of England and Wales or the
210 NHS Central Register and National Records of Scotland. Based on the ICD-10 (International
211 Classification of Diseases, 10th revision) from both primary and contributory death cause, we
212 defined CVD mortality as death from diseases of the circulatory system (ICD-10 codes: I0,
213 I11, I13, I20–I51, I60–I69), excluding hypertension and diseases of arteries and lymph.

214

215 *2.4 Covariates*

216 We adjusted for covariates that are typical in studies examining intensity-specific PA and
217 CVD risk based on previous peer-reviewed literature³⁶. We included age, sex, ethnicity,
218 accelerometer wear duration, LPA minutes, MPA minutes, VPA minutes, smoking status,

219 alcohol consumption, sleep duration, diet, screen time, education level, parental history of
220 CVD and cancer, and medication use of cholesterol, blood pressure, or diabetes.

221

222 *2.5 Statistical analysis*

223 To minimize the influence of the sparse data, we excluded the MVPA, MPA, and VPA
224 duration derived from the cadence-based and ML method above the 95th percentile^{4,6,7}. We
225 examined the time-to-event dose-response association (hazard ratios [HRs]) of duration
226 across intensities classified from all three methods with ACM and CVD mortality using the
227 Cox proportional hazards regression with the 5th percentile of the duration across intensities
228 as the reference and age as timescale. We demonstrated the dose-response association using
229 the restricted cubic spline with knots placed at the 6th, 34th, and 67th percentile to fit the
230 right-skewed distribution⁶. We assessed the proportional hazards assumptions using
231 Schoenfeld residuals and observed no violations. We presented overlapping plots to visually
232 show and compare the dose-response associations of daily duration at each PA intensity with
233 ACM and CVD mortality across the cadence-based and ML methods. To compare across
234 methods, we assessed the minimum dose^{4,6,7}, 25th and 75th percentile dose (indicated by the
235 ED50, ED25, ED75 in figures and tables, which estimate the daily duration associated with
236 50%, 25% and 75% of the optimal risk reduction, respectively), and the optimal dose (the
237 nadir of the dose-response curve, representing the optimal risk reduction) and median daily
238 duration and their corresponding HRs (95% CI). We used bootstrapping with replacement
239 (1000 iterations) to calculate the 95% confidence interval for above metrics. We also assessed
240 the dose-response association of the standardized MVPA/MPA/VPA duration as computed
241 by each method (defined as absolute duration divided by the corresponding standard
242 deviation [SD]) with the two mortality outcomes.

243 To assess the robustness of our results, we performed the sensitivity analysis on the 90th
244 percentile of dataset derived from each method to further minimise the influence of sparse
245 minutes, and on the participants based on the 95th percentile of the 1LC method.

246 We performed all analyses using *R* software (version 4.2.2) and fitted models using *rms*
247 package (version 6.3.0).

248

249 **3. Results**

250 *3.1. Description of the study sample*

251 **Supplementary Table 1** shows the characteristics of the sample derived by the 1LC method
252 in MVPA minutes, stratified by quartiles of daily MVPA minutes. The mean (SD) age was
253 61.8 (7.8), and 39,847 (58.1%) were women. Over a mean follow-up 8.0 (0.9) years, there
254 were 2134 deaths, of which 575 were due to CVD related causes. **Supplementary Fig. 1**
255 shows the complete sample deprivation process.

256

257 *3.2. Associations of daily MVPA with all-cause and CVD mortality*

258 **Fig. 1** shows that the L-shaped dose-response curve of MVPA duration with ACM derived
259 from the ML and 1LC method were similar, which the association decreased in a near-linear
260 fashion up to a similar nadir point (optimal duration: ML, 32.0 (30.3, 33.9), HR, 0.63 (0.53,
261 0.75); 1LC, 31.9 (30.0, 34.7), HR, 0.60 (0.53, 0.69)) and then increased in a near-linear
262 fashion with 95% CI largely overlapped. The L-shaped association derived from the 2LC
263 method exhibited a more pronounced ACM risk reduction than other methods till reaching its
264 nadir point. The median, minimum, 25th, 75th and the optimal doses in 2LC were substantially
265 smaller than those in the 1LC and ML method, with slightly higher corresponding ACM HRs,
266 e.g., the minimum dose (**Supplementary Table 2**): ML vs 1LC vs 2LC, 14.9 (95% CI: 14.6,
267 15.2) vs 11.1 (10.8, 11.4) vs 2.8 (2.6, 2.8), HR: 0.82 (95% CI: 0.76, 0.87) vs 0.80 (0.76, 0.85)
268 vs 0.83 (0.78, 0.88). **Fig. 2** shows that the association derived from the 2LC method exhibited
269 a more pronounced CVD risk reduction than other methods until its nadir point. ML method
270 provided the lowest CVD HR across all the metrics among the methods, e.g., the ED75 dose,
271 ML vs 2LC, 20.0 (19.0, 23.5) vs 5.6 (4.1, 9.9); HR: 0.60 (0.50, 0.71) vs 0.69 (0.58, 0.83)
272 (**Supplementary Table 3**). However, there was less evidence (wider 95% CI) for CVD
273 mortality than ACM due to fewer CVD mortality events.

274

275 *3.3. Associations of MPA duration with all-cause and CVD mortality*

276 **Fig. 3** shows that the L-shaped dose-response association of MPA mins between the ML and
277 1LC method with ACM were similar with 95% CI largely overlapped, and both methods
278 exhibited linear inverse association up to around the median duration (ML:32.2 [32.1, 32.3],
279 HR, 0.60 [0.51, 0.70]; 1LC: 19.9 [19.9, 20.0], HR, 0.65 [0.58, 0.73]) (**Supplementary Table**
280 **2**) where the curve flattened. Meanwhile, the 2LC method exhibited steeper risk reduction in
281 a near-linear fashion up to its median (5.3 [5.3, 5.4], HR, 0.68 [0.60, 0.77]) and continued to

282 show more risk reduction than other methods until 20 MPA minutes. The ML method
283 provided substantially larger minimum, 25th, and 75th percentile durations than the 1LC and
284 2LC methods, with more ACM risk reduction, e.g., the minimum dose (**Supplementary**
285 **Table 2**): ML vs 1LC vs 2LC, 14.9 (95% CI: 14.6, 15.2) vs 8.6 (8.3, 9.3) vs 2.3 (2.1, 2.8).
286 HR: 0.77 (0.70, 0.83) vs 0.81 (0.76, 0.86) vs 0.82 (0.77, 0.88). **Fig. 4** shows that L-shaped
287 beneficial association with CVD mortality across methods, respectively, was similar to that in
288 the MPA-ACM association in terms of the dose-response curve and other metrics
289 (**Supplementary Table 3**), except for the upward pattern of the 2LC method after the median
290 MPA mins (roughly 6 mins).

291

292 *3.4. Associations of VPA duration with all-cause and CVD mortality*

293 **Fig. 5** shows that the 1LC method provided the least pronounced dose-response association
294 of VPA mins with ACM, and the ML method provided the most pronounced one, e.g., the
295 median (**Supplementary Table 2**): ML, 3.2 (95% CI: 3.2, 3.2), HR, 0.53 (95% CI: 0.44,
296 0.64); 1LC, 6.9 (6.9, 7.0), 0.68 (0.60, 0.77); 2LC, 2.0 (2.0, 2.0), 0.69 (0.61, 0.79). The dose-
297 response association of the 2LC method was almost identical to that of the ML method up to
298 roughly 1.5 mins, with both methods showing steep risk reduction. The ML method further
299 exhibited steep ACM risk reduction up to around its median point and demonstrated
300 substantially lower ACM risk reduction than that of the 2LC method. **Fig. 6** shows that the
301 dose-response association of VPA minutes derived by the 2LC method with CVD mortality
302 exhibited more pronounced risk reduction compared to the ML method up to around 10
303 minutes where the curve flattened. The 2LC method provided smaller dose but higher
304 corresponding CVD HRs for most point estimates, e.g, the minimum point (**Supplementary**
305 **Table 3**): ML: 9.0 (7.4, 9.3), HR, 0.70 (0.60, 0.81); 2LC, 0.6 (0.4, 0.9), HR, 0.75 (0.67,
306 0.85). However, there was less evidence (wider 95% CI) for CVD mortality than ACM due to
307 fewer CVD mortality events.

308

309 *3.5. Associations of the standardised duration with all-cause and CVD mortality*

310 **Supplementary Fig 2-4** show that the dose-response associations of standardized duration
311 with ACM across intensities, respectively, was similar between the 1LC and 2LC method,

312 with 95% CI largely overlapped. The ML method provided the most pronounced association
313 of standardized duration with ACM across intensities, especially for the standardized VPA
314 minutes-ACM association (**Supplementary Fig 4**), e.g., for the median of the standardized
315 VPA minutes/day and the corresponding HR (ML: -0.31, HR, 0.53 (0.44, 0.64); 1LC: -0.35,
316 HR, 0.68 (0.60, 0.77); 2LC: -0.39, HR, 0.71, (0.63, 0.81)) (**Supplementary Table 4**).
317 **Supplementary Table 4** shows that almost all the metrics related to MPA and VPA between
318 the 2LC and the ML method were different. **Supplementary Fig 5 and 7** show that the 95%
319 CI of the L-shaped dose-response association of the standardized MVPA and VPA duration
320 with CVD mortality were largely overlapped. **Supplementary Fig 6** shows that the ML
321 method provided the most pronounced association of standardized MPA duration with CVD
322 mortality compared to other methods, e.g., for the median of the standardized MPA
323 minutes/day and the corresponding HR (ML: -0.20, HR, 0.54 (0.43,0.68); 1LC: -0.27, HR,
324 0.59 (0.43,0.81); 2LC: -0.35, HR, 0.64 (0.48, 0.86)) (**Supplementary Table 5**). We observed
325 less evidence (wider 95% CI) for association of standardized duration with CVD mortality
326 due to fewer CVD mortality events than ACM.

327

328 **4. Discussion**

329 To our knowledge, this is the first study to compare the dose-response associations of
330 different PA intensity classification methods (cadence-based methods and ML method) with
331 standard health outcomes used routinely in observational studies. The ML and 1LC methods
332 provided similar dose-response associations. The 2LC method exhibited the most pronounced
333 rate of decrease in the association with mortality across intensities at the lower end of the
334 duration. The ML elicited more risk reduction in mortality than cadence-based methods,
335 particularly for the VPA-ACM association. The ML method provided the most pronounced
336 dose-response associations of the standardized duration with mortality outcomes across
337 different intensity levels. Future research could focus on deriving the cadence-thresholds for
338 short windows, e.g., 10-second window for each PA intensity level, to inform the step-based
339 public health guideline and interventions, etc.

340 A potential explanation for the variation in dose-response associations is the different
341 window length applied in the 2LC and ML method. Our ML method classified PA intensity
342 using 10-second window, enabling the detection of finer pattern of MVPA derived by very
343 brief bouts, thus leading to different dose-response association relative to the 2LC method

344 which applied 60-second window. The shorter window is more likely to detect MVPA burst
345 ³⁷. Prior studies applying various window lengths (15 seconds, 30 seconds, 60 seconds)
346 demonstrated that shorter windows detect significantly more MVPA minutes ^{27,38}. Applying a
347 longer epoch such as 60-seconds window might result in a smoothing effect ³⁹, e.g., a 30-
348 second jogging to catch bus (MVPA burst) might be degraded to lower intensity using 2LC
349 method. A recently published large cohort study has indicated that the MVPA accumulated
350 through bouts that less than 1 min (with VPA being at least 15% proportion of the MVPA
351 time) would elicit beneficial change on ACM risk ⁵. Such smoothing effect cause higher
352 intensity PA to decrease to a lower level, potentially misleading researchers to unreliable
353 intensity time – morality association and therefore overlooked the health effect of the
354 valuable granularity of intensity time.

355 Another potential explanation is that the 2LC method, although be able to detect stepping
356 activities and thus counting steps accurately, might overlook the variation in step intensity
357 (e.g., steps involving upper-body movements). The ML method, in conjunction with the wrist
358 accelerometer, could detect steps associated with upper-body movements ⁴⁰ (e.g., ambulatory
359 gardening), thus capturing wider range of PAs and providing more representative duration of
360 PA intensities than 2LC method. Prior studies have indicated that PAs involving upper-body
361 movements such as occupational and household activities account for a large proportion of
362 MVPA time (e.g., the household PAs was the most prevalent domain for those who reported
363 under weekly 150 MVPA mins) ⁴¹.

364 The association of the VPA duration derived by the ML method with ACM was similar to
365 that of 2LC method at the lower end of distribution (up to 2 mins), suggesting that these VPA
366 duration might be the result of incidental brisk walking or running (e.g., quickly moving for
367 10 seconds). Prior study has shown that a large portion (92.3%) of VILPA bouts in non-
368 exercisers were less than a minute ⁴. The 2LC using 60-seconds window may overlook many
369 such bursts and thus unlikely to derive the dose-response association close to ML method in
370 free-living environment. The ML-derived VPA dose-response association appeared the
371 steepest HR reduction for ACM with the lowest HR associated in all point estimates,
372 suggesting that the VPA duration including granularity duration might demonstrate more
373 beneficial change on ACM than that of the VPA duration calculated based on step counts per
374 min. This enhanced the value of the short VPA burst for achieving beneficial health change.

375 After standardization of the MVPA/MPA/VPA minutes, the dose-response association
376 with mortality between the 2LC and the ML method showed variation in terms of the curve
377 and most point estimates. This was especially evident in the association of standardized VPA

378 duration with the ACM. This finding implied that the propensity of the estimation methods
379 not only provide different estimates of the duration, but also the additional duration of the
380 MVPA/MPA/VPA bursts detected by the ML method elicited higher degree of mortality risk
381 reduction than other methods. This enhanced the role of the short bout higher intensity PA in
382 potentially beneficial changes on health.

383 Wrist, as the most active part of body, produces many extraneous wrist movements (e.g.,
384 eating) which might be recorded as ambulatory by wrist-worn accelerometers (“error steps”)
385 ⁴². Although the 1LC method was based on the same cadence-thresholds as 2LC, it counted
386 steps without identifying the stepping activities first, which leads to substantial higher “error
387 steps” counts than the 2LC method. Therefore, the 1LC method inflated MVPA/MPA
388 durations and thus derived similar association to the ML method. A study comparing the step
389 detection accuracy of 13 wearables found that wrist-worn accelerometers detected roughly
390 450 more steps per day than waist-worn in free-living environment ⁴³. The inflated
391 MVPA/MPA duration might lead to associations with mortality close to that of ML method.
392 Nonetheless, the inherent randomness in wrist movements might introduce variations in error
393 steps count, influenced by factors such as the variation of wrist-movements, sample
394 characteristics or step-detection methods making 1LC-derived dose-response association with
395 mortality unstable.

396 To our knowledge, this is the first study comparing the PA intensity classification
397 methods (cadence-based and ML method) in terms of the association with standard health
398 outcomes used routinely in observational studies. Our study had large sample with long
399 follow-up years. The ML method could detect the micro-pattern of PA and upper-body
400 movements in free-living environment. The 2LC method used advanced step detection
401 algorithm and provide better accuracy. We have conducted multiple sensitivity analyses to
402 show robustness of our findings. Our study had several limitations. Our study categorized
403 confounders (e.g., sleep duration, LPA) to avoid statistical assumption violation. The ML
404 method is not the ground-truth PA intensity time estimation method, although showed high
405 accuracy for MPA (precision: 92.7) and VPA (94.6) comparing to the criterion data⁷. The
406 measurement error in the ML method for PA intensity time might affect the comparison of
407 the intensity time - mortality association among methods. The UK biobank has a low
408 response-rate (5.5%) and thus not representative of the population ⁴⁴, although a study has
409 demonstrated that poor representativeness in UK biobank didn’t materially affect the PA-
410 mortalities associations ⁴⁵.

411

412 **5. Perspective**

413 The ILC method produced similar dose-response MVPA/MPA-mortality associations to the
414 ML method. The 2LC method exhibited the most pronounced associations with mortality
415 across intensities than the ML method at lower end of the duration. The ML method elicited
416 more risk reduction in mortality than cadence-based methods, particularly for the VPA-ACM
417 association. After standardization of the duration, the ML method generally provided most
418 pronounced associations across intensities. These suggested that the MPA/VPA bursts
419 detected by the shorter detection window (10-second) in the ML method can capture the
420 associations between activities and health outcomes with greater granularity. The method that
421 based on the threshold of walking steps in a minute long window might underestimate both
422 the duration and potential health benefits of the MPA and VPA bouts under the free-living
423 conditions. Future studies could focus on the cadence-based thresholds for windows less than
424 a minute for detecting the MPA and VPA bursts.

425

426 **Acknowledgements**

427 This research has been conducted using the UK Biobank Resource under Application
428 Number 25813. The authors would like to thank all the participants and professionals
429 contributing to the UK Biobank.

430 **Funding**

431 This study was funded by the National Health and Medical Research Council (NHMRC)
432 through a Leadership level 2 Fellowship to Emmanuel Stamatakis (APP1194510).

433 **Authors' contributions**

434 E.S., M.N.A, L.W., R.K.B, and S.G.T contributed to the study conception and design, and
435 interpretation of data. Data preparation was performed by M.N.A. The draft of the manuscript
436 and data analysis were performed by L.W. All authors revised it critically and gave final
437 approval and agreed to be accountable for all aspects of the work, ensuring integrity and
438 accuracy.

439 **Conflict of Interest Statement**

440 The authors declare that they have no conflict of interest.

441 **Informed Consent**

442 Informed consent was obtained from all individual participants included in the study.

443

444

445

446 **References**

- 447 1. Bull FC, Al-Ansari SS, Biddle S, et al. World Health Organization 2020 guidelines on physical
448 activity and sedentary behaviour. *Br J Sports Med*. 2020;54(24):1451-1462.
449 doi:10.1136/bjsports-2020-102955
- 450 2. Piercy KL, Troiano RP, Ballard RM, et al. The physical activity guidelines for Americans. *JAMA -*
451 *Journal of the American Medical Association*. 2018;320(19):2020-2028.
452 doi:10.1001/jama.2018.14854
- 453 3. Sallis JF, Saelens BE. Assessment of physical activity by self-report: Status, limitations, and
454 future directions. *Res Q Exerc Sport*. 2000;71:1-14. doi:10.1080/02701367.2000.11082780
- 455 4. Stamatakis E, Ahmadi MN, Gill JMR, et al. Association of wearable device-measured vigorous
456 intermittent lifestyle physical activity with mortality. *Nat Med*. 2022;28(12):2521-2529.
457 doi:10.1038/s41591-022-02100-x
- 458 5. Ahmadi MN, Hamer M, Gill JMR, et al. Brief bouts of device-measured intermittent lifestyle
459 physical activity and its association with major adverse cardiovascular events and mortality in
460 people who do not exercise: a prospective cohort study. *Lancet Public Health*.
461 2023;8(10):e800-e810. doi:10.1016/S2468-2667(23)00183-4
- 462 6. Stamatakis E, Ahmadi MN, Friedenreich CM, et al. Vigorous Intermittent Lifestyle Physical
463 Activity and Cancer Incidence Among Nonexercising Adults: The UK Biobank Accelerometry
464 Study. *JAMA Oncol*. Published online July 27, 2023. doi:10.1001/jamaoncol.2023.1830
- 465 7. Ahmadi MN, Clare PJ, Katzmarzyk PT, del Pozo Cruz B, Lee IM, Stamatakis E. Vigorous physical
466 activity, incident heart disease, and cancer: how little is enough? *Eur Heart J*. Published online
467 December 7, 2022. doi:10.1093/eurheartj/ehac572
- 468 8. Trost SG, Mciver KL, Pate RR. Conducting accelerometer-based activity assessments in field-
469 based research. In: *Medicine and Science in Sports and Exercise*. Vol 37. ; 2005.
470 doi:10.1249/01.mss.0000185657.86065.98
- 471 9. Stemland I, Ingebrigtsen J, Christiansen CS, et al. Validity of the Acti4 method for detection of
472 physical activity types in free-living settings: comparison with video analysis. *Ergonomics*.
473 2015;58(6):953-965. doi:10.1080/00140139.2014.998724
- 474 10. Tudor-Locke C, Ducharme SW, Aguiar EJ, et al. Walking cadence (steps/min) and intensity in
475 41 to 60-year-old adults: the CADENCE-adults study. *International Journal of Behavioral*
476 *Nutrition and Physical Activity*. 2020;17(1). doi:10.1186/s12966-020-01045-z

- 477 11. Tudor-Locke C, Aguiar EJ, Han H, et al. Walking cadence (steps/min) and intensity in 21-40
478 year olds: CADENCE-adults. *International Journal of Behavioral Nutrition and Physical Activity*.
479 2019;16(1). doi:10.1186/s12966-019-0769-6
- 480 12. Tudor-Locke C, Mora-Gonzalez J, Ducharme SW, et al. Walking cadence (steps/min) and
481 intensity in 61–85-year-old adults: the CADENCE-Adults study. *International Journal of*
482 *Behavioral Nutrition and Physical Activity*. 2021;18(1). doi:10.1186/s12966-021-01199-4
- 483 13. Aguiar EJ, Mora-Gonzalez J, Ducharme SW, et al. Cadence-based classification of moderate-
484 intensity overground walking in 41- to 85-year-old adults. *Scand J Med Sci Sports*. Published
485 online 2022. doi:10.1111/SMS.14274
- 486 14. Aguiar EJ, Gould ZR, Ducharme SW, Moore CC, McCullough AK, Tudor-Locke C. Cadence-
487 based Classification of Minimally Moderate Intensity during Overground Walking in 21- To 40-
488 Year-Old Adults. *J Phys Act Health*. 2019;16(12):1092-1097. doi:10.1123/jpah.2019-0261
- 489 15. Paluch AE, Bajpai S, Bassett DR, et al. Daily steps and all-cause mortality: a meta-analysis of
490 15 international cohorts. *Lancet Public Health*. 2022;7(3):e219-e228. doi:10.1016/S2468-
491 2667(21)00302-9
- 492 16. Paluch AE, Bajpai S, Ballin M, et al. Prospective Association of Daily Steps With Cardiovascular
493 Disease: A Harmonized Meta-Analysis. *Circulation*. Published online December 20, 2022.
494 doi:10.1161/CIRCULATIONAHA.122.061288
- 495 17. Blodgett JM, Ahmadi MN, Atkin AJ, et al. Device-measured physical activity and
496 cardiometabolic health: the Prospective Physical Activity, Sitting, and Sleep (ProPASS)
497 consortium. *Eur Heart J*. Published online November 10, 2023.
498 doi:10.1093/eurheartj/ehad717
- 499 18. Senaratne N, Stubbs B, Werneck AO, Stamatakis E, Hamer M. Device-measured physical
500 activity and sedentary behaviour in relation to mental wellbeing: An analysis of the 1970
501 British cohort study. *Prev Med (Baltim)*. 2021;145. doi:10.1016/j.ypmed.2021.106434
- 502 19. Blodgett JM, Mitchell JJ, Stamatakis E, Chastin S, Hamer M. Associations between the
503 composition of daily time spent in physical activity, sedentary behaviour and sleep and risk of
504 depression: Compositional data analyses of the 1970 British cohort Study. *J Affect Disord*.
505 2023;320:616-620. doi:10.1016/j.jad.2022.09.110
- 506 20. Cooper R, Stamatakis E, Hamer M. Associations of sitting and physical activity with grip
507 strength and balance in mid-life: 1970 British Cohort Study. *Scand J Med Sci Sports*.
508 2020;30(12):2371-2381. doi:10.1111/sms.13793
- 509 21. Huang BH, Hamer M, Chastin S, Pearson N, Koster A, Stamatakis E. Cross-sectional
510 associations of device-measured sedentary behaviour and physical activity with cardio-
511 metabolic health in the 1970 British Cohort Study. *Diabetic Medicine*. 2021;38(2).
512 doi:10.1111/dme.14392
- 513 22. Ross R, Chaput JP, Giangregorio LM, et al. Canadian 24-Hour Movement Guidelines for Adults
514 aged 18-64 years and Adults aged 65 years or older: an integration of physical activity,
515 sedentary behaviour, and sleep. In: *Applied Physiology, Nutrition, and Metabolism =*
516 *Physiologie Appliquee, Nutrition et Metabolisme*. Vol 45. NLM (Medline); 2020:S57-S102.
517 doi:10.1139/apnm-2020-0467

- 518 23. Stamatakis E, Ahmadi M, Murphy MH, et al. Journey of a thousand miles: From ‘Manpo-Kei’
519 to the first steps-based physical activity recommendations. *Br J Sports Med*. Published online
520 2023. doi:10.1136/bjsports-2023-106869
- 521 24. Narayanan A, Desai F, Stewart T, Duncan S, MacKay L. Application of raw accelerometer data
522 and machine-learning techniques to characterize human movement behavior: A systematic
523 scoping review. *J Phys Act Health*. 2020;17(3):360-383. doi:10.1123/jpah.2019-0088
- 524 25. Willetts M, Hollowell S, Aslett L, Holmes C, Doherty A. Statistical machine learning of sleep
525 and physical activity phenotypes from sensor data in 96,220 UK Biobank participants. *Sci Rep*.
526 2018;8(1). doi:10.1038/s41598-018-26174-1
- 527 26. Pavey TG, Gilson ND, Gomersall SR, Clark B, Trost SG. Field evaluation of a random forest
528 activity classifier for wrist-worn accelerometer data. *J Sci Med Sport*. 2017;20(1):75-80.
529 doi:10.1016/j.jsams.2016.06.003
- 530 27. Ahmadi MN, Pavey TG, Trost SG. Machine learning models for classifying physical activity in
531 free-living preschool children. *Sensors (Switzerland)*. 2020;20(16):1-14.
532 doi:10.3390/s20164364
- 533 28. Le Wei, Matthew N. Ahmadi, Mark Hamer, et al. Comparing Cadence and ML based Estimates
534 for PA Intensities classification. Unpublished results
- 535 29. Sudlow C, Gallacher J, Allen N, et al. UK Biobank: An Open Access Resource for Identifying the
536 Causes of a Wide Range of Complex Diseases of Middle and Old Age. *PLoS Med*. 2015;12(3).
537 doi:10.1371/journal.pmed.1001779
- 538 30. Sipoš M, Pačes P, Roháč J, Nováček P. Analyses of Triaxial Accelerometer Calibration
539 Algorithms. *IEEE Sens J*. 2012;12(5). doi:10.1109/JSEN.2011.2167319
- 540 31. Ahmadi MN, Nathan N, Sutherland R, Wolfenden L, Trost SG. Non-wear or sleep? Evaluation
541 of five non-wear detection algorithms for raw accelerometer data. Published online 2019.
542 doi:10.1080/02640414.2019.1703301
- 543 32. Hildebrand M, Van Hees VT, Hansen BH, Ekelund U. Age group comparability of raw
544 accelerometer output from wrist-and hip-worn monitors. *Med Sci Sports Exerc*.
545 2014;46(9):1816-1824. doi:10.1249/MSS.0000000000000289
- 546 33. Ramakrishnan R, Doherty A, Smith-Byrne K, et al. Accelerometer measured physical activity
547 and the incidence of cardiovascular disease: Evidence from the UK Biobank Cohort study.
548 *PLoS Med*. 2021;18(1). doi:10.1371/journal.pmed.1003487
- 549 34. Brondin A, Nordström M, Olsson CM, Salvi D. Open source step counter algorithm for
550 wearable devices. In: *ACM International Conference Proceeding Series*. Association for
551 Computing Machinery; 2020. doi:10.1145/3423423.3423431
- 552 35. Toth LP, Park S, Springer CM, Feyerabend MD, Steeves JA, Bassett DR. Video-Recorded
553 Validation of Wearable Step Counters under Free-living Conditions. *Med Sci Sports Exerc*.
554 2018;50(6):1315-1322. doi:10.1249/MSS.0000000000001569
- 555 36. Ahmadi MN, Clare PJ, Katzmarzyk PT, del Pozo Cruz B, Lee IM, Stamatakis E. Vigorous physical
556 activity, incident heart disease, and cancer: how little is enough? *Eur Heart J*. Published online
557 October 27, 2022. doi:10.1093/eurheartj/ehac572

- 558 37. Arvidsson D, Fridolfsson J, Börjesson M. Measurement of physical activity in clinical practice
559 using accelerometers. *J Intern Med*. 2019;286(2):137-153. doi:10.1111/joim.12908
- 560 38. Banda JA, Haydel KF, Davila T, et al. Effects of varying epoch lengths, wear time algorithms,
561 and activity cut-points on estimates of child sedentary behavior and physical activity from
562 accelerometer data. *PLoS One*. 2016;11(3). doi:10.1371/journal.pone.0150534
- 563 39. Aadland E, Andersen LB, Anderssen SA, Resaland GK, Kvalheim OM. Associations of volumes
564 and patterns of physical activity with metabolic health in children: A multivariate pattern
565 analysis approach. *Prev Med (Baltim)*. 2018;115:12-18. doi:10.1016/j.ypmed.2018.08.001
- 566 40. Liu F, Wanigatunga AA, Schrack JA. Assessment of Physical Activity in Adults Using Wrist
567 Accelerometers. *Epidemiol Rev*. 2021;43(1):65-93. doi:10.1093/epirev/mxab004
- 568 41. Strain T, Fitzsimons C, Foster C, Mutrie N, Townsend N, Kelly P. Age-related comparisons by
569 sex in the domains of aerobic physical activity for adults in Scotland. *Prev Med Rep*.
570 2016;3:90-97. doi:10.1016/j.pmedr.2015.12.013
- 571 42. Bassett DR, Toth LP, LaMunion SR, Crouter SE. Step Counting: A Review of Measurement
572 Considerations and Health-Related Applications. *Sports Medicine*. 2017;47(7):1303-1315.
573 doi:10.1007/s40279-016-0663-1
- 574 43. Nakagata T, Murakami H, Kawakami R, et al. Step-count outcomes of 13 different activity
575 trackers: Results from laboratory and free-living experiments. *Gait Posture*. 2022;98:24-33.
576 doi:10.1016/j.gaitpost.2022.08.004
- 577 44. Fry A, Littlejohns TJ, Sudlow C, et al. Comparison of Sociodemographic and Health-Related
578 Characteristics of UK Biobank Participants with Those of the General Population. *Am J*
579 *Epidemiol*. 2017;186(9):1026-1034. doi:10.1093/aje/kwx246
- 580 45. Stamatakis E, Owen KB, Shepherd L, Drayton B, Hamer M, Bauman AE. Is Cohort
581 Representativeness Passé? Poststratified Associations of Lifestyle Risk Factors with Mortality
582 in the UK Biobank. *Epidemiology*. 2021;32(2):179-188. doi:10.1097/EDE.0000000000001316
- 583
- 584

All-cause mortality

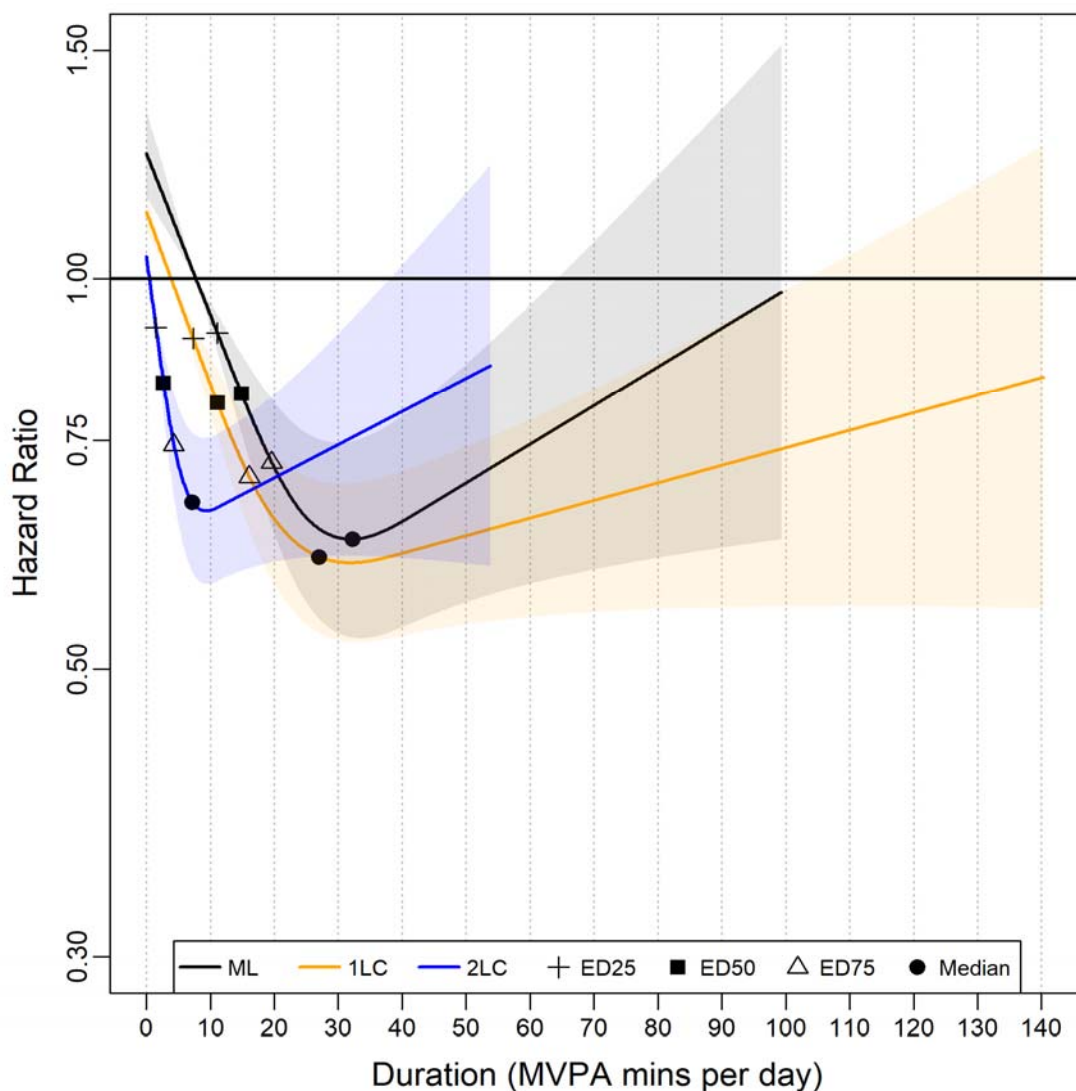


Fig. 1 Association of the MVPA minutes derived from the cadence-based methods (1LC and 2LC) and machine learning (ML) method with all-cause mortality. 1LC indicates the one-level cadence method. 2LC indicates the two-level cadence method. Cross, diamond, and triangle represent the daily MVPA minutes that associated with 25% (ED25), 50% (ED50), and 75% (ED75) of the optimal risk reduction, respectively, and circle represents the median daily MVPA minutes. Please see supplementary table 2 for the list of metrics (duration and corresponding HR). The association was adjusted for age, sex, wear time, light physical activity duration, smoking status, alcohol consumption, sleep duration, diet, screen-time, education, self-reported parental history of CVD and cancer, and self-reported medication use (cholesterol, blood pressure, and diabetes). The range was capped at the 95th percentile to minimize the influence of sparse data. All methods used their corresponding 5th percentile as the reference level to calculate each HR.

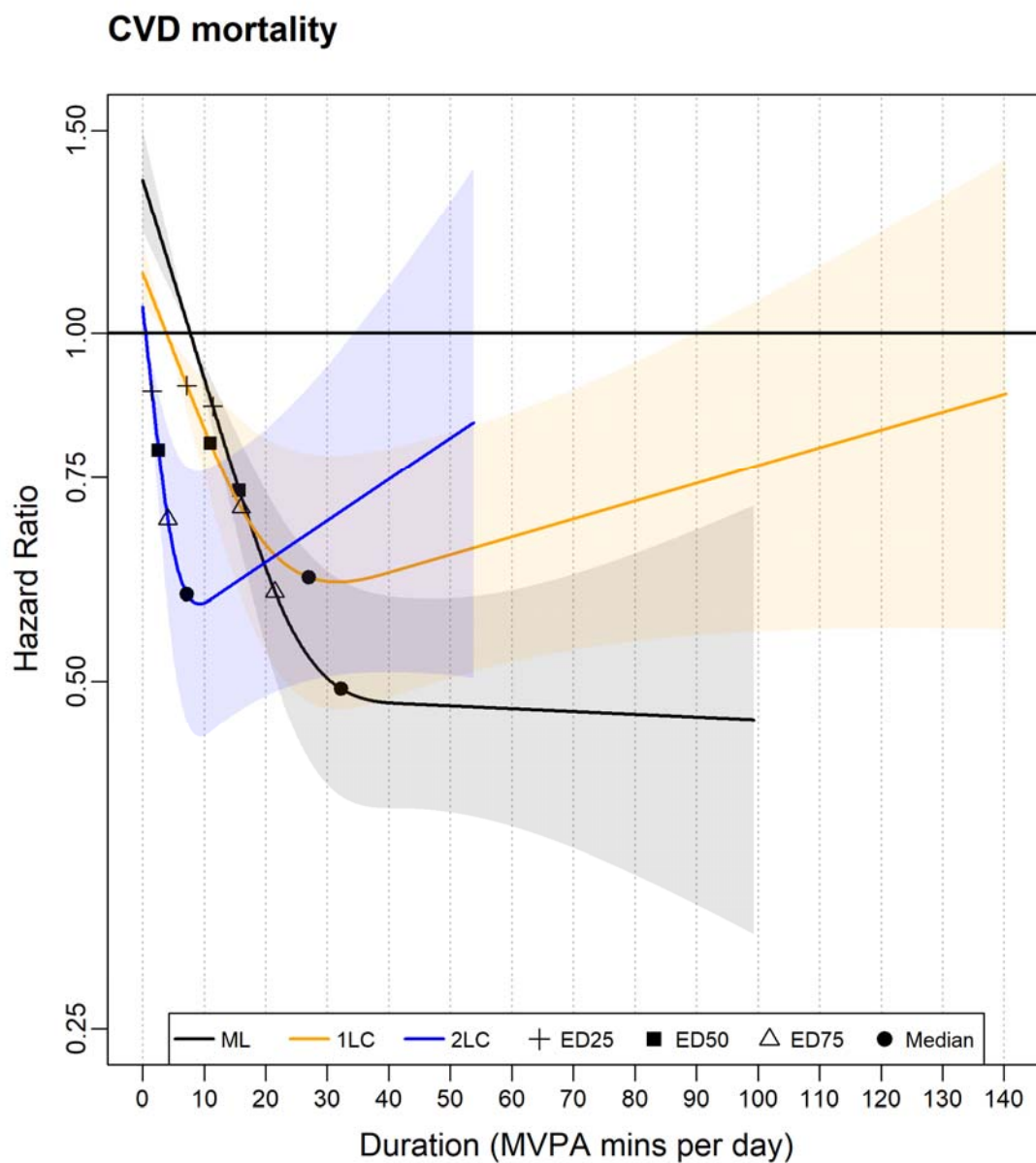


Fig 2 Association of the MVPA minutes derived from the cadence-based methods (1LC and 2LC) and machine learning (ML) method with CVD mortality. 1LC indicates the one-level cadence method. 2LC indicates the two-level cadence method. Cross, diamond, and triangle represent the daily MVPA minutes that associated with 25% (ED25), 50% (ED50), and 75% (ED75) of the optimal risk reduction, respectively, and circle represents the median daily MVPA minutes. Please see supplementary table 2 for the list of metrics (duration and corresponding HR). The association was adjusted for age, sex, wear time, Light PA, smoking status, alcohol consumption, sleep duration, diet, screen-time, education, self-reported parental history of CVD and cancer, and self-reported medication use (cholesterol, blood pressure, and diabetes). The range was capped at the 95th percentile to minimize the influence of sparse data. All methods used their corresponding 5th percentile as the reference level to calculate each HR.

All-cause mortality

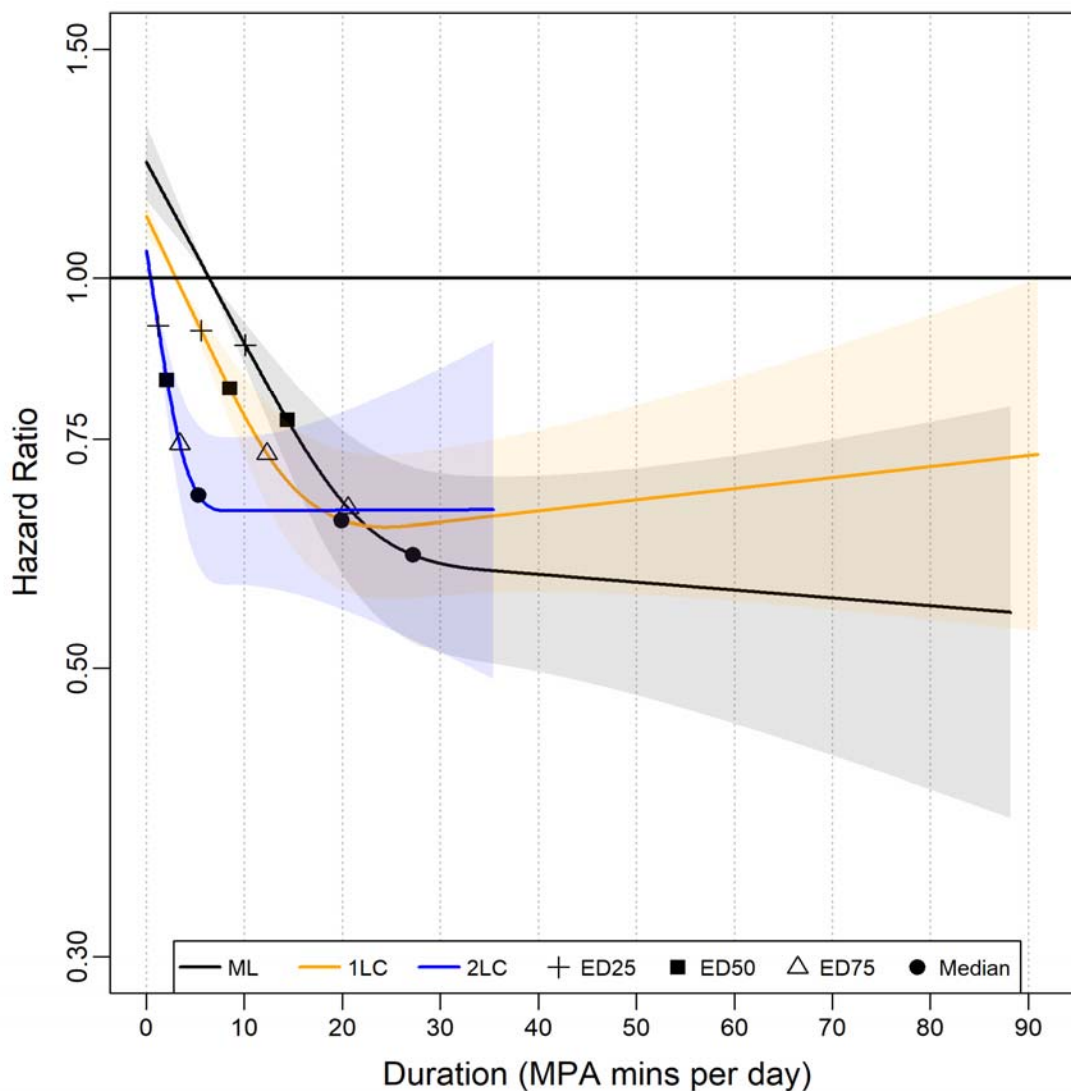


Fig. 3 Association of the MPA minutes derived from the cadence-based methods (1LC and 2LC) and machine learning (ML) method with all-cause mortality. 1LC indicates the one-level cadence method. 2LC indicates the two-level cadence method. Cross, diamond, and triangle represent the daily MVPA minutes that associated with 25% (ED25), 50% (ED50), and 75% (ED75) of the optimal risk reduction, respectively, and circle represents the median daily MVPA minutes. Please see supplementary table 2 for the list of metrics (duration and corresponding HR). The association was adjusted for age, sex, wear time, light PA, VPA, smoking status, alcohol consumption, sleep duration, diet, screen-time, education, self-reported parental history of CVD and cancer, and self-reported medication use (cholesterol, blood pressure, and diabetes). The range was capped at the 95th percentile to minimize the influence of sparse data. All methods used their corresponding 5th percentile as the reference level to calculate each HR.

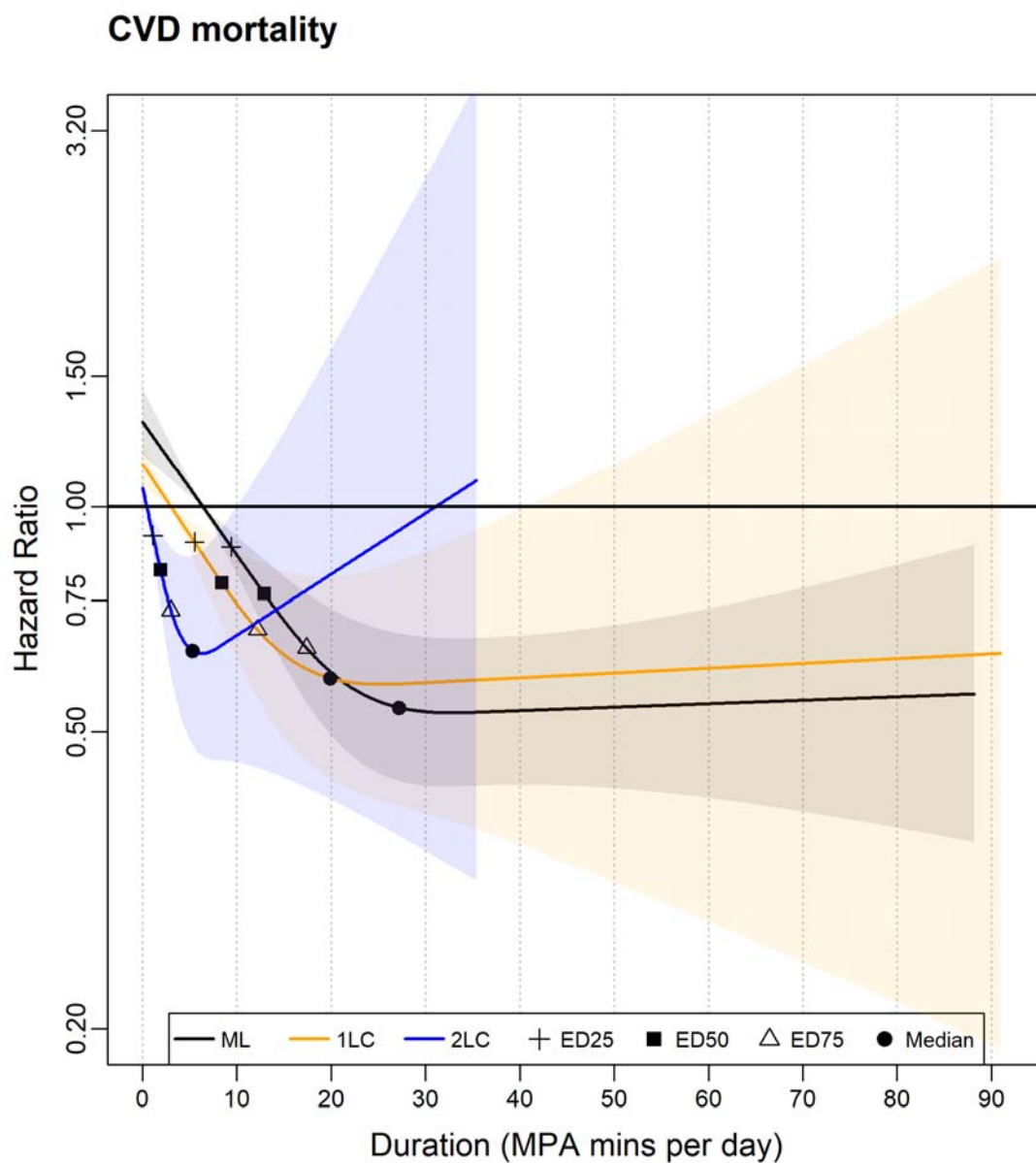


Fig 4 Association of the MPA minutes derived from the cadence-based methods (1LC and 2LC)* and machine learning (ML) method with CVD mortality. 1LC indicates the one-level cadence method. 2LC indicates the two-level cadence method. Cross, diamond, and triangle represent the daily MVPA minutes that associated with 25% (ED25), 50% (ED50), and 75% (ED75) of the optimal risk reduction, respectively, and circle represents the median daily MVPA minutes. Please see supplementary table 2 for the list of metrics (duration and corresponding HR). The association was adjusted for age, sex, wear time, light PA, VPA, smoking status, alcohol consumption, sleep duration, diet, screen-time, education, self-reported parental history of CVD and cancer, and self-reported medication use (cholesterol, blood pressure, and diabetes). The range was capped at the 95th percentile to minimize the influence of sparse data. All methods used their corresponding 5th percentile as the reference level to calculate each HR.

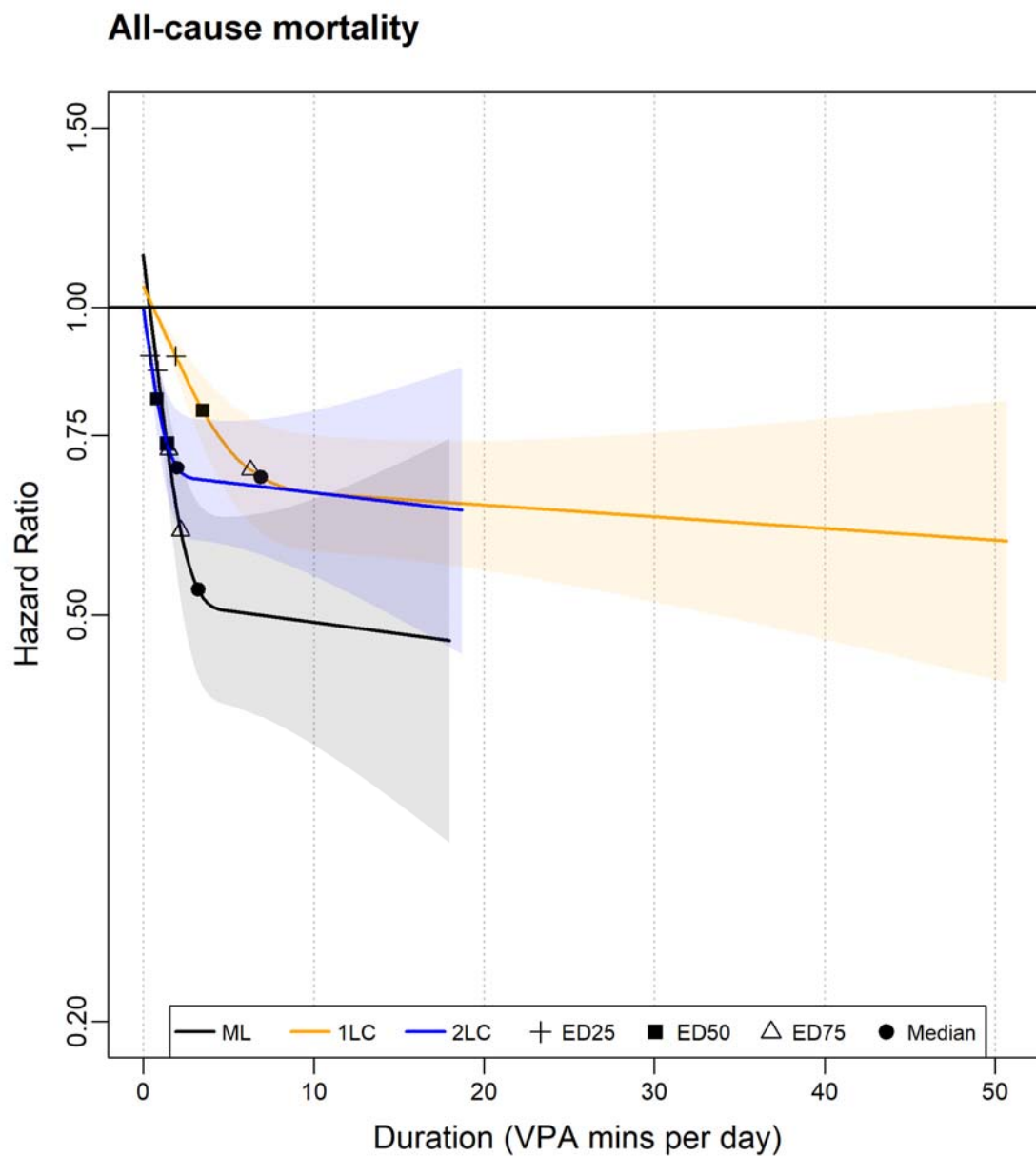


Fig. 5 Association of the VPA minutes derived from the cadence-based methods (1LC and 2LC) and machine learning (ML) method with all-cause mortality. 1LC indicates the one-level cadence method. 2LC indicates the two-level cadence method. Cross, diamond, and triangle represent the daily MVPA minutes that associated with 25%(ED25), 50% (ED50), and 75% (ED75) of the optimal risk reduction, respectively, and circle represents the median daily MVPA minutes. Please see supplementary table 2 for the list of metrics (duration and corresponding HR). Adjusted for age, sex, wear time, light PA, MPA, smoking status, alcohol consumption, sleep duration, diet, screen-time, education, self-reported parental history of CVD and cancer, and self-reported medication use (cholesterol, blood pressure, and diabetes). The range was capped at the 95th percentile to minimize the influence of sparse data. All methods used their corresponding 5th percentile as the reference level to calculate each HR.

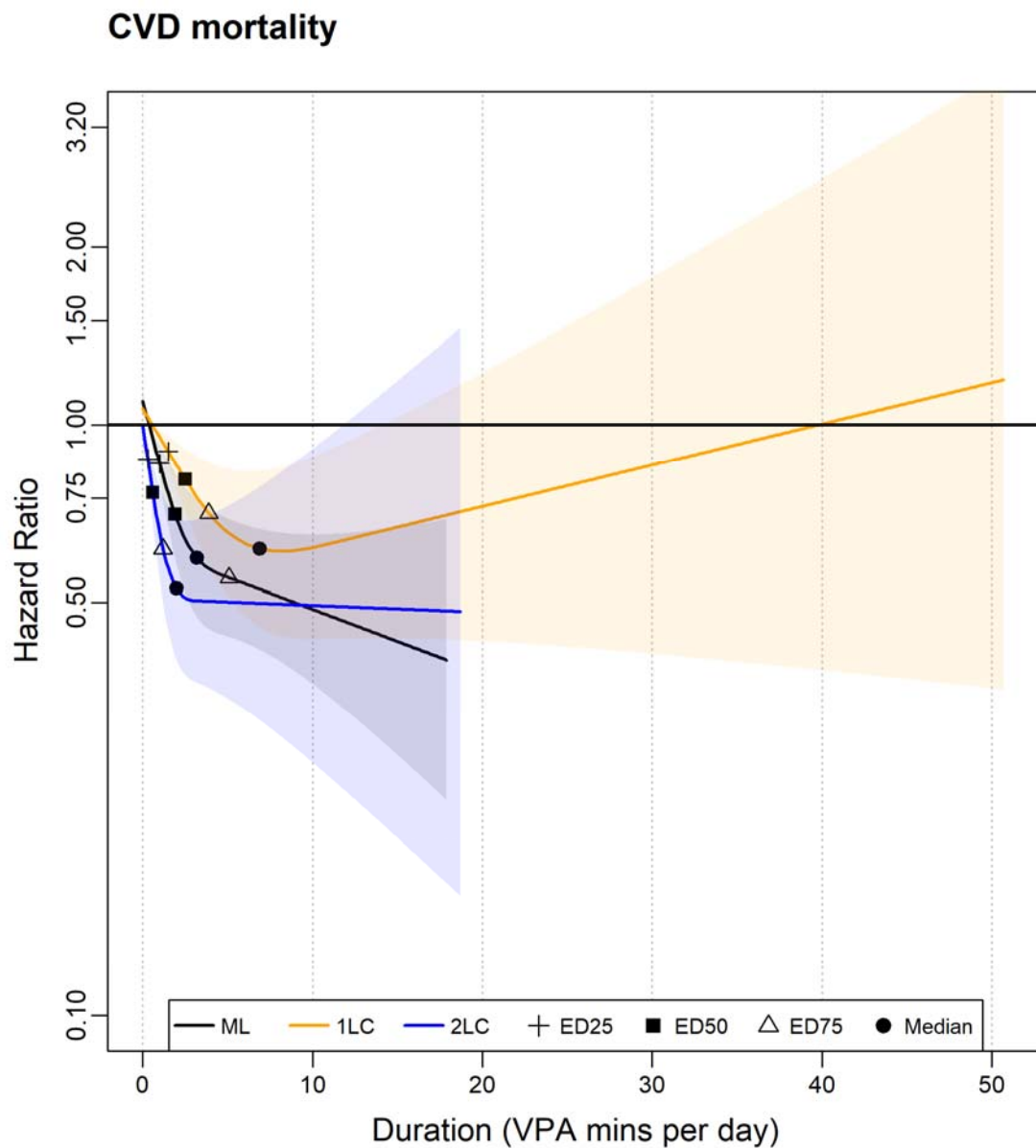
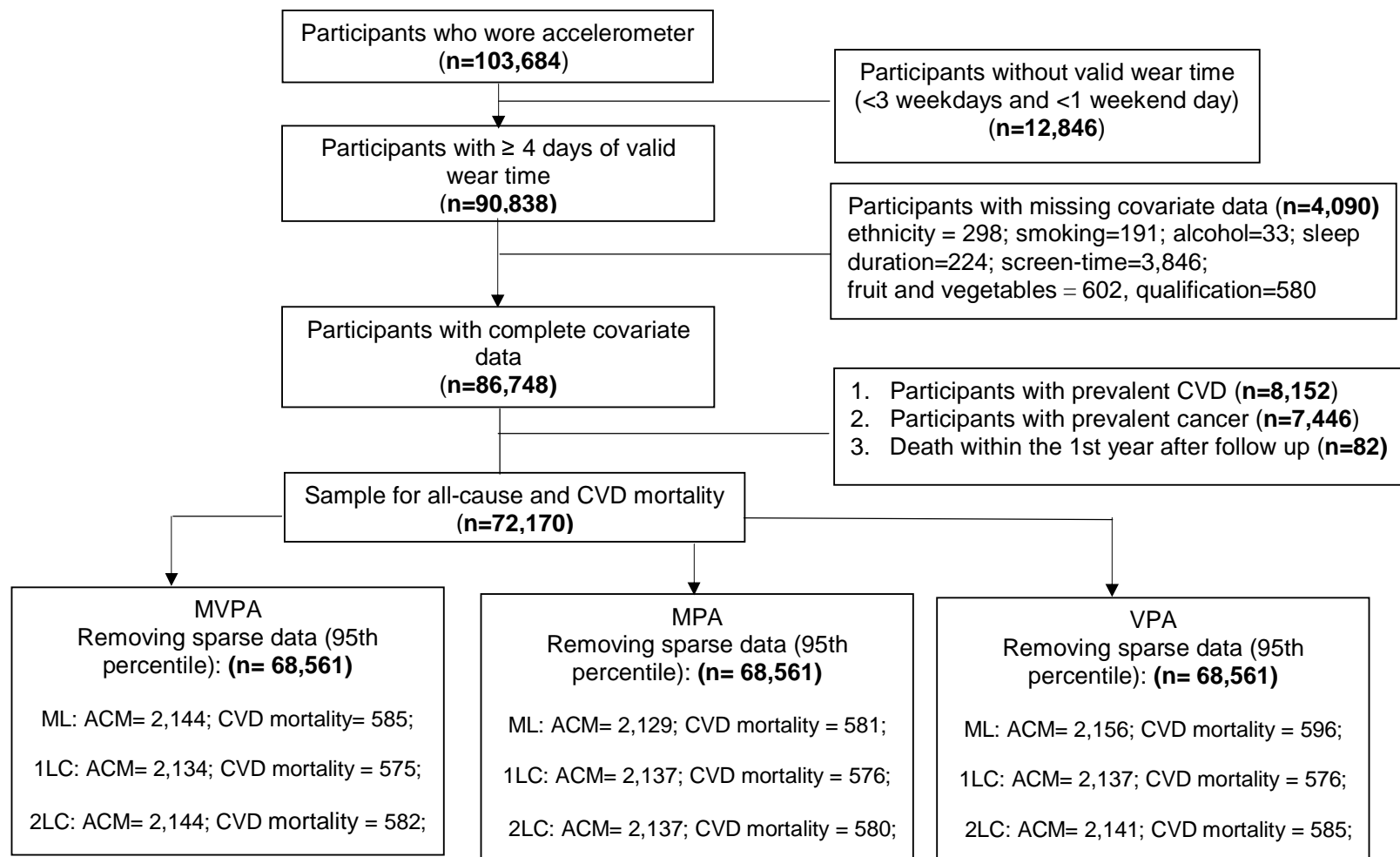
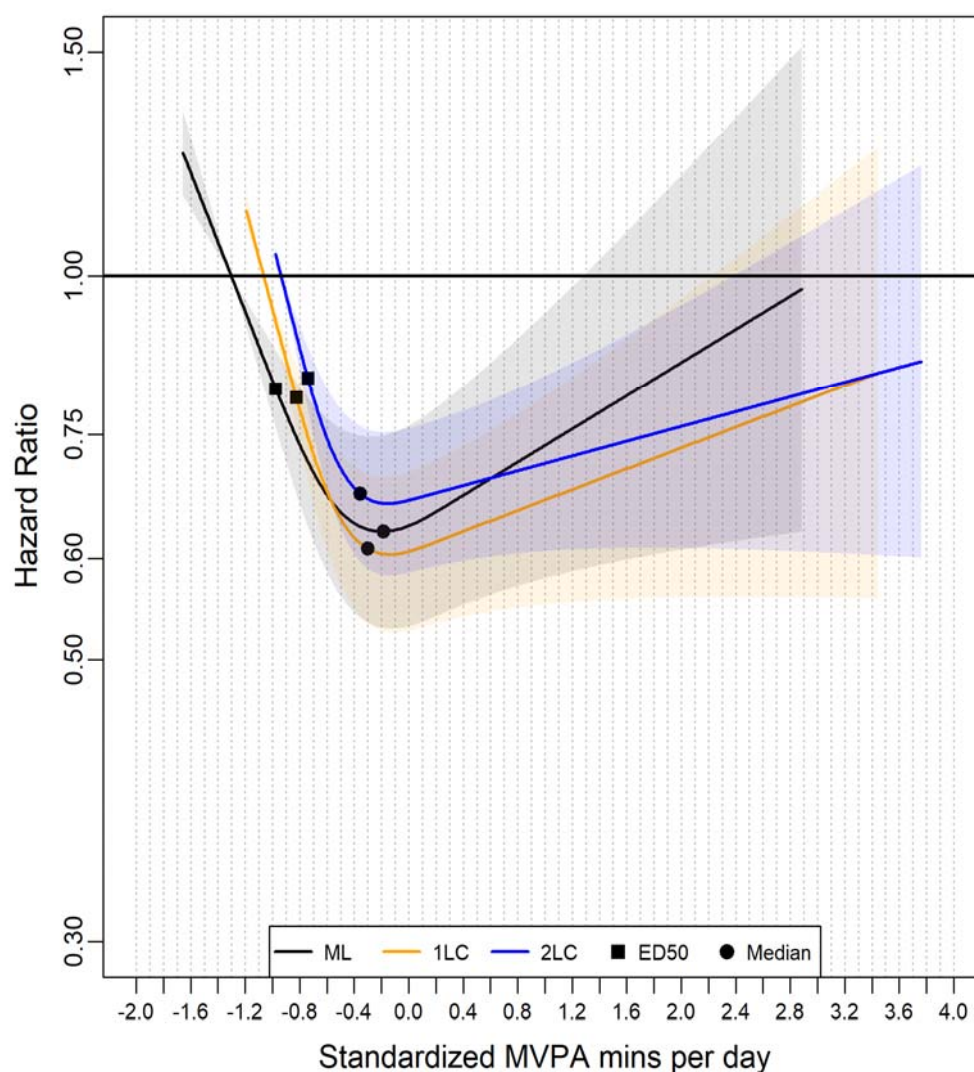


Fig 6 Association of the VPA minutes derived from the cadence-based methods (1LC and 2LC)* and machine learning (ML) method with CVD mortality. 1LC indicates the one-level cadence method. 2LC indicates the two-level cadence method. Cross, diamond, and triangle represent the daily MVPA minutes that associated with 25% (ED25), 50% (ED50), and 75% (ED75) of the optimal risk reduction, respectively, and circle represents the median daily MVPA minutes. Please see supplementary table 2 for the list of metrics (duration and corresponding HR). The association was adjusted for age, sex, wear time, light PA, MPA, smoking status, alcohol consumption, sleep duration, diet, screen-time, education, self-reported parental history of CVD and cancer, and self-reported medication use (cholesterol, blood pressure, and diabetes). The range was capped at the 95th percentile to minimize the influence of sparse data. All methods used their corresponding 5th percentile as the reference level to calculate each HR.



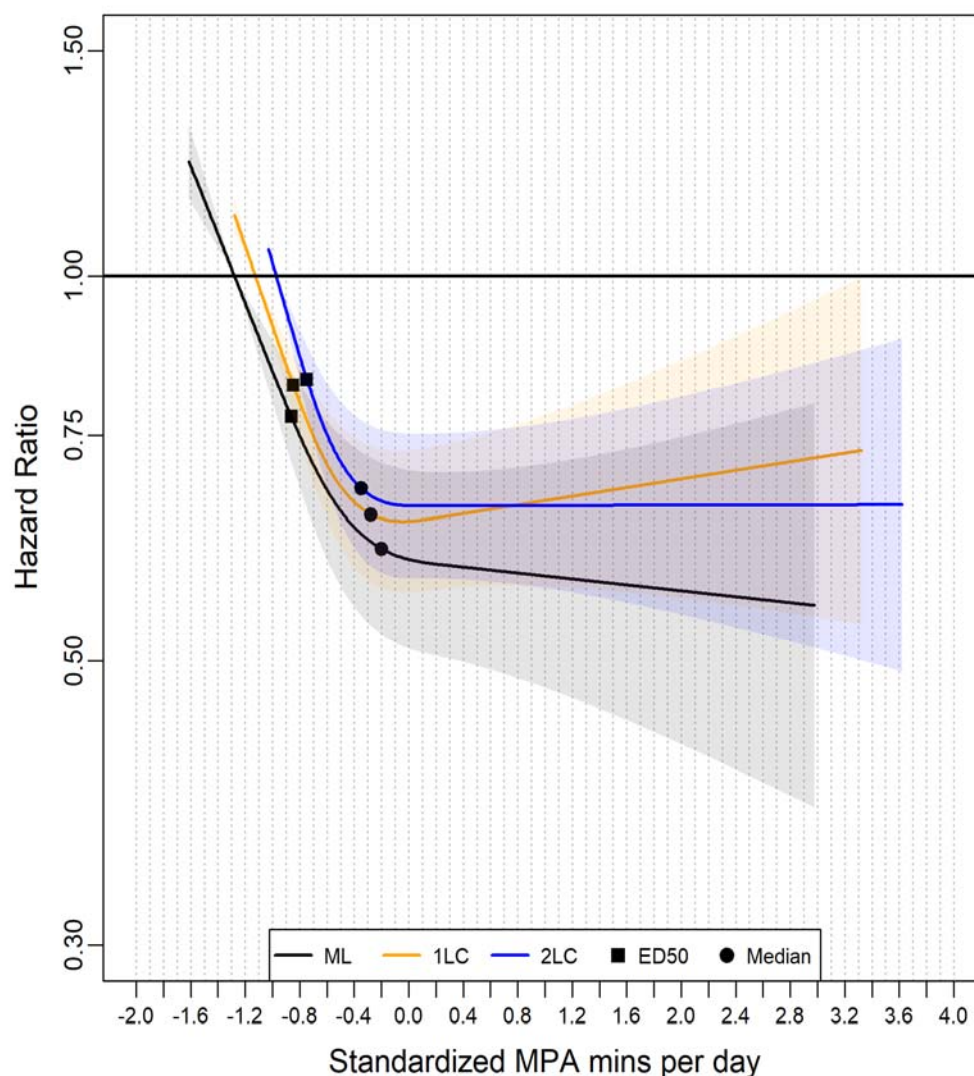
Supplemental fig 1 Flow diagram of participants

All-cause mortality



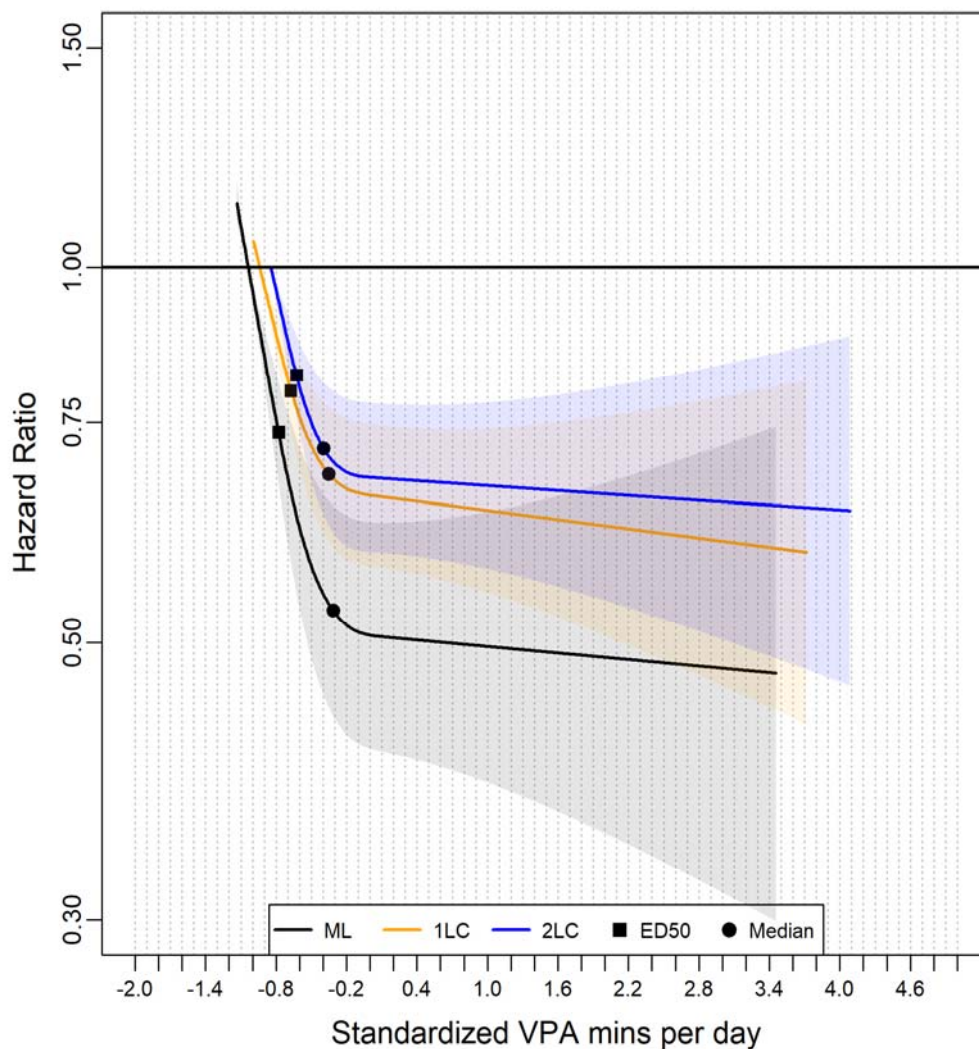
Supplementary fig 2 Association of the standardized MVPA minutes derived from the cadence-based methods (1LC and 2LC) and machine learning (ML) method with all-cause mortality. 1LC indicates the one-level cadence method. 2LC indicates the two-level cadence method. Diamond represents the minimum dose (ED50), which estimates the daily standardised MVPA minutes associated with 50% of optimal risk reduction across methods. Circle represents the standardised daily median MVPA minutes across methods. Please see supplementary table 3 for the list of metrics (duration and corresponding HR). The association was adjusted for age, sex, wear time, LPA, smoking status, alcohol consumption, sleep duration, diet, screen-time, education, self-reported parental history of CVD and cancer, and self-reported medication use (cholesterol, blood pressure, and diabetes). The range was capped at the 95th percentile to minimize the influence of sparse data. All methods used their corresponding 5th percentile as the reference level to calculate each HR.

All-cause mortality



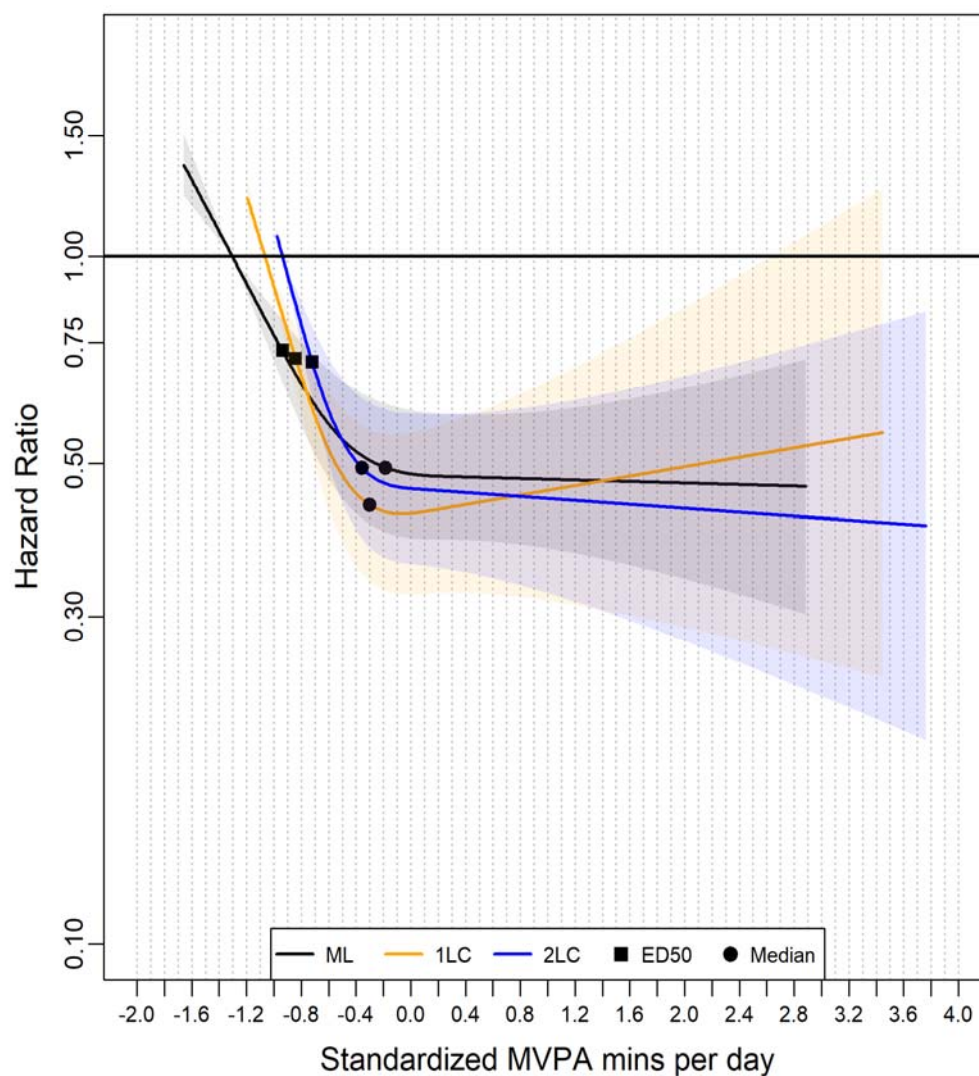
Supplementary fig 3 Association of the standardized MPA minutes derived from the cadence-based methods (1LC and 2LC)* and machine learning (ML) method with All-cause mortality. 1LC indicates the one-level cadence method. 2LC indicates the two-level cadence method. Diamond represents the minimum dose (ED50), which estimates the daily standardised MPA minutes associated with 50% of optimal risk reduction across methods. Circle represents the standardised median MPA minutes across methods. Please see supplementary table 3 for the list of metrics (duration and corresponding HR). The association was adjusted for age, sex, wear time, LPA, VPA, smoking status, alcohol consumption, sleep duration, diet, screen-time, education, self-reported parental history of CVD and cancer, and self-reported medication use (cholesterol, blood pressure, and diabetes). The range was capped at the 95th percentile to minimize the influence of sparse data. All methods used their corresponding 5th percentile as the reference level to calculate each HR.

All-cause mortality

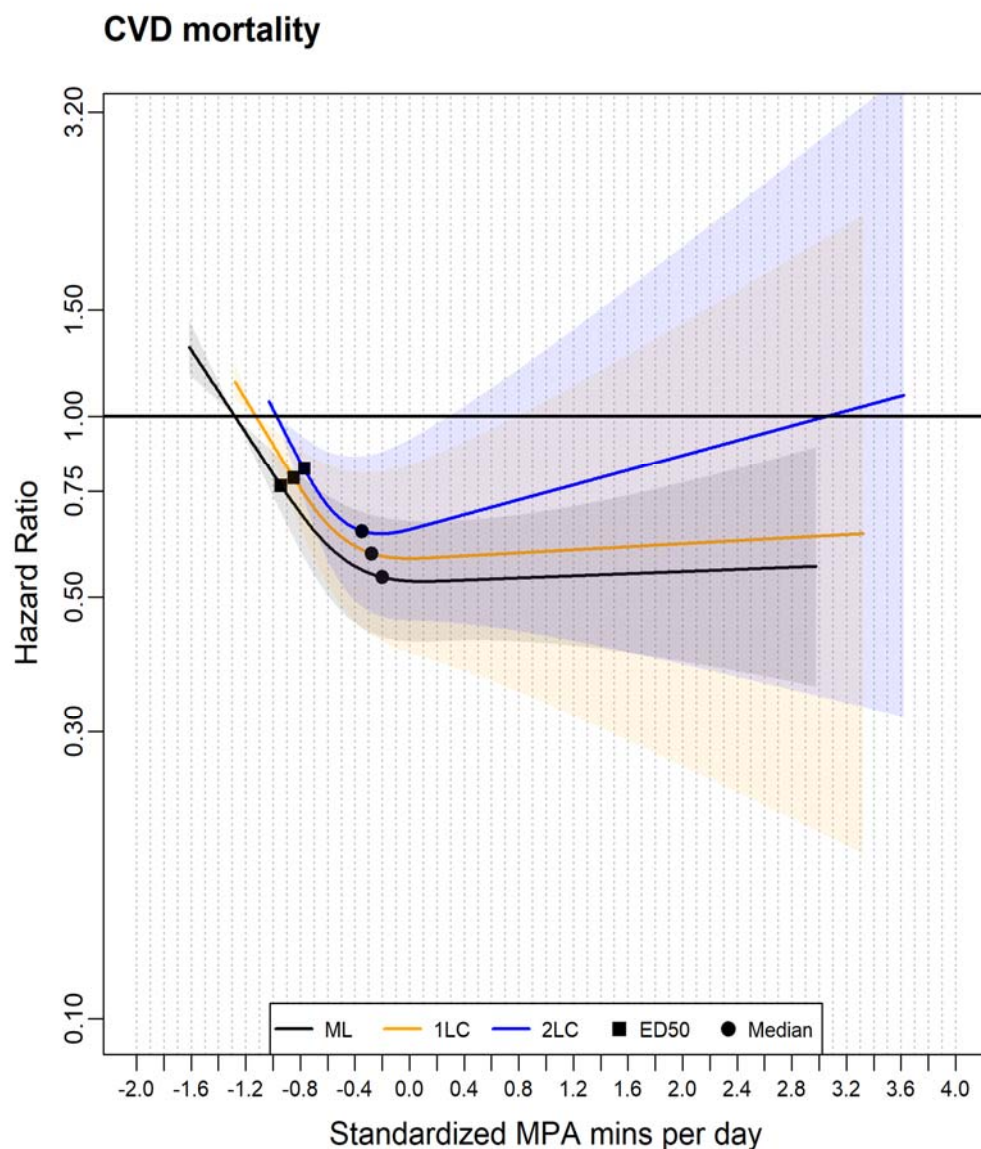


Supplementary fig 4 Association of the standardized VPA minutes derived from the cadence-based methods (1LC and 2LC) and machine learning (ML) method with all-cause mortality. 1LC indicates the one-level cadence method. 2LC indicates the two-level cadence method. Diamond represents the minimum dose (ED50), which estimates the daily standardised VPA minutes associated with 50% of optimal risk reduction across methods. Circle represents the standardised median VPA minutes across methods. Please see supplementary table 3 for the list of metrics (duration and corresponding HR). The association was adjusted for age, sex, wear time, LPA, MPA, smoking status, alcohol consumption, sleep duration, diet, screen-time, education, self-reported parental history of CVD and cancer, and self-reported medication use (cholesterol, blood pressure, and diabetes). The range was capped at the 95th percentile to minimize the influence of sparse data. All methods used their corresponding 5th percentile as the reference level to calculate each HR.

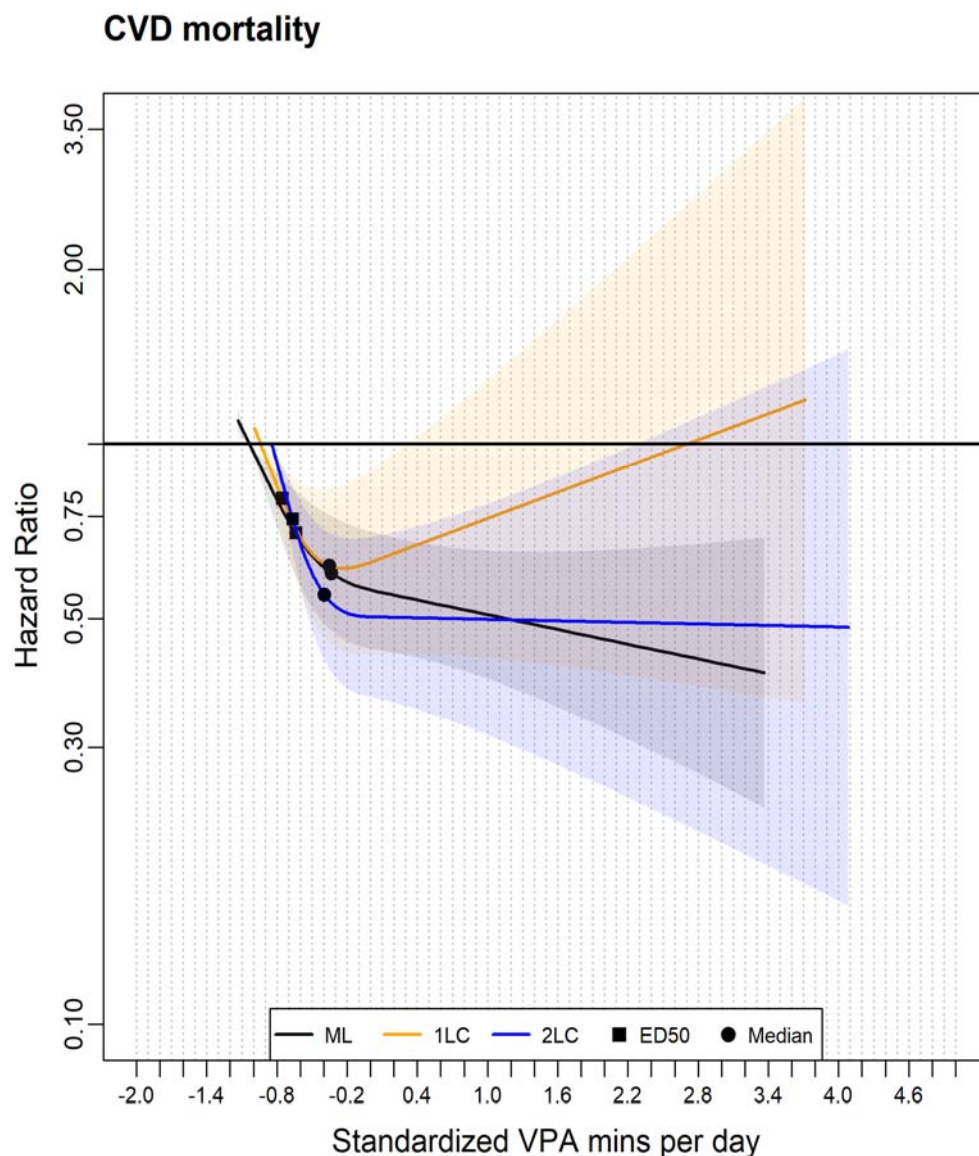
CVD mortality



Supplementary fig 5 Association of the standardized MVPA minutes derived from the cadence-based methods (1LC and 2LC) and machine learning (ML) method with CVD mortality. 1LC indicates the one-level cadence method. 2LC indicates the two-level cadence method. Diamond represents the minimum dose (ED50), which estimates the daily standardised MVPA minutes associated with 50% of optimal risk reduction across methods. Circle represents the standardised median MVPA minutes across methods. Please see supplementary table 4 for the list of metrics (duration and corresponding HR). The association was adjusted for age, sex, wear time, LPA, smoking status, alcohol consumption, sleep duration, diet, screen-time, education, self-reported parental history of CVD and cancer, and self-reported medication use (cholesterol, blood pressure, and diabetes). The range was capped at the 95th percentile to minimize the influence of sparse data. All methods used their corresponding 5th percentile as the reference level to calculate each HR.



Supplementary fig 6 Association of the standardized MPA minutes derived from the cadence-based methods (1LC and 2LC) and machine learning (ML) method with CVD mortality. 1LC indicates the one-level cadence method. 2LC indicates the two-level cadence method. Diamond represents the minimum dose (ED50), which estimates the daily standardised MPA minutes associated with 50% of optimal risk reduction across methods. Circle represents the standardised median MPA minutes across methods. Please see supplementary table 4 for the list of metrics (duration and corresponding HR). The association was adjusted for age, sex, wear time, LPA, VPA, smoking status, alcohol consumption, sleep duration, diet, screen-time, education, self-reported parental history of CVD and cancer, and self-reported medication use (cholesterol, blood pressure, and diabetes). The range was capped at the 95th percentile to minimize the influence of sparse data. All methods used their corresponding 5th percentile as the reference level to calculate each HR.



Supplementary fig 7 Association of the standardized VPA minutes derived from the cadence-based methods (1LC and 2LC) and machine learning (ML) method with CVD mortality. 1LC indicates the one-level cadence method. 2LC indicates the two-level cadence method. Diamond represents the minimum dose (ED50), which estimates the daily standardised VPA minutes associated with 50% of optimal risk reduction across methods. Circle represents the standardised median VPA minutes across methods. Please see supplementary table 4 for the list of metrics (duration and corresponding HR). The association was adjusted for age, sex, wear time, LPA, MPA, smoking status, alcohol consumption, sleep duration, diet, screen-time, education, self-reported parental history of CVD and cancer, and self-reported medication use (cholesterol, blood pressure, and diabetes). The range was capped at the 95th percentile to minimize the influence of sparse data. All methods used their corresponding 5th percentile as the reference level to calculate each HR.

Supplementary Table 1 Characteristics of Participants, by quartile a of one-level cadence method-derived MVPA minutes

		One-level cadence method derived daily MVPA minutes			
		Total	Quartile 1	Quartile 2	Quartile 3
Total participants, n	68561	17186	17097	17138	17140
Male, n (%)	28714 (41.9)	6406 (37.3)	7011 (41.0)	7409 (43.2)	7888 (46.0)
wear_days, mean (sd)	6.8 (0.4)	6.8 (0.4)	6.8 (0.34)	6.8 (0.4)	6.8 (0.3)
follow-up year, mean (SD)	8.0 (0.9)	7.9 (1.0)	8.0 (0.9)	8.0 (0.8)	8.0 (0.8)
age, mean (SD)	61.8 (7.8)	64.2 (7.4)	62.1 (7.7)	61.0 (7.8)	59.9 (7.7)
Education, n (%)					
<i>College or University degree</i>	30237 (44.1)	6681 (38.9)	7267 (42.5)	7848 (45.8)	8441 (49.2)
<i>A levels/AS levels or equivalent</i>	9162 (13.4)	2255 (13.1)	2316 (13.5)	2319 (13.5)	2272 (13.3)
<i>O levels/GCSEs or equivalent</i>	14001 (20.4)	3820 (22.2)	3616 (21.1)	3446 (20.1)	3119 (18.2)
<i>CSEs or equivalent</i>	2804 (4.1)	673 (3.9)	696 (4.1)	688 (4.0)	747 (4.4)
<i>NVQ or HND or HNC or equivalent</i>	3512 (5.1)	957 (5.6)	924 (5.4)	842 (4.9)	789 (4.6)
<i>Other professional qualifications e.g nursing, teaching</i>	3327 (4.9)	1018 (5.9)	846 (4.9)	792 (4.6)	671 (3.9)
White ethnicity, n (%)	66357 (96.8)	16668 (97.0)	16522 (96.6)	16574 (96.7)	16593 (96.8)
diet, mean (SD) ^b	7.9 (4.4)	7.8 (4.4)	7.8 (4.3)	7.9 (4.4)	8.1 (4.6)
Discretionary screen time, mean (SD) ^c	3.6 (2.1)	4.1 (2.3)	3.7 (2.1)	3.5 (2.1)	3.2 (2.0)
Medication, n (%)					
<i>Cholesterol, n (%)</i>	7927 (11.6)	2977 (17.3)	2055 (12.0)	1587 (9.3)	1308 (7.6)
<i>Blood Pressure, n (%)</i>	5792 (8.4)	2075 (12.1)	1498 (8.8)	1234 (7.2)	985 (5.7)
<i>Diabetes, n (%)</i>	83 (0.1)	21 (0.1)	20 (0.1)	21 (0.1)	21 (0.1)
sleep (hours per day), (mean (SD))	7.17 (0.98)	7.19 (1.06)	7.16 (0.98)	7.16 (0.94)	7.16 (0.92)

smokers, n (%)	28659 (41.8)	7744 (45.1)	7170 (41.9)	6964 (40.6)	6781 (39.6)
Family history of CVD, n (%)	37362 (54.5)	9881 (57.5)	9380 (54.9)	9128 (53.3)	8973 (52.4)
Family history of cancer n (%)	21207 (30.9)	5475 (31.9)	5339 (31.2)	5229 (30.5)	5164 (30.1)
All-cause mortality, n (%)	2134 (3.1)	839 (4.9)	505 (3.0)	442 (2.6)	348 (2.0)
CVD mortality, n (%)	575 (0.8)	265 (1.5)	117 (0.7)	110 (0.6)	83 (0.5)
Daily Durations across intensities and methods^d					
<i>ML_MVPA (mean (SD))</i>	38.3 (26.5)	20.3 (13.9)	31.8 (17.6)	42.3 (22.3)	58.7 (31.6)
<i>2LC_MVPA (mean (SD))</i>	12.2 (14.5)	2.3 (2.0)	6.4 (4.1)	12.6 (8.0)	27.3 (19.8)
<i>1LC_MVPA (mean (SD))</i>	36.0 (30.2)	7.2 (3.5)	19.6 (4.0)	37.3 (6.7)	79.9 (23.5)
<i>ML_MPA (mean (SD))</i>	33.0 (24.0)	18.1 (12.6)	27.6 (16.1)	36.1 (20.6)	50.2 (30.0)
<i>2LC_MPA (mean (SD))</i>	8.5 (9.4)	1.8 (1.5)	4.8 (3.0)	9.0 (5.4)	18.4 (12.4)
<i>1LC_MPA (mean (SD))</i>	25.3 (19.9)	5.7 (2.8)	14.8 (3.1)	26.9 (5.1)	53.8 (15.3)
<i>ML_VPA (mean (SD))</i>	5.3 (6.0)	2.2 (3.3)	4.2 (4.5)	6.1 (5.7)	8.6 (7.7)
<i>2LC_VPA (mean (SD))</i>	3.7 (5.4)	0.6 (0.6)	1.7 (1.4)	3.6 (3.0)	8.9 (8.2)
<i>1LC_VPA (mean (SD))</i>	10.7 (11.0)	1.6 (1.0)	4.8 (1.8)	10.4 (3.4)	26.2 (10.5)
<i>ML_LPA (mean (SD))</i>	119.4 (62.9)	108.9 (59.9)	118.9 (62.5)	123.4 (63.2)	126.3 (64.6)
<i>2LC_LPA (mean (SD))</i>	116.7 (63.4)	76.2 (43.0)	107.2 (51.6)	128.8 (58.7)	154.7 (69.2)
<i>1LC_LPA (mean (SD))</i>	254.3 (79.8)	199.8 (67.1)	250.3 (68.4)	274.9 (73.0)	292.4 (78.2)

^a Quartiles were categorized from low to high based on the one-level cadence method derived daily MVPA duration. This table was based on the 95th percentile of the one-level cadence derived MVPA sample.

^b fruit and vegetables servings per day

^c time spent watching TV and computer per day

Abbreviations: CVD, cardiovascular diseases; MVPA, moderate-to-vigorous intensity physical activity; MPA, moderate intensity physical activity; VPA, vigorous intensity physical activity; LPA, light intensity physical activity; machine learning method (ML), one-level cadence method (1LC), two-level cadence method (2LC); SD, standard deviation;

Supplementary table 2 The duration associated with the ED25, ED50, ED75, ED100 and the median of the intensities duration derived from cadence-based methods (1LC and 2LC)* and machine learning (ML) method with all-cause mortality

MVPA daily minutes	Dose (95% CI)			HR (95% CI)		
Methods	ML	1LC	2LC	ML	1LC	2LC
ED100 (optimal duration)	32.0 (30.3, 33.9)	31.9 (30.0, 34.7)	9.3 (8.8, 10.4)	0.63 (0.53, 0.75)	0.60 (0.53, 0.69)	0.66 (0.58, 0.75)
ED75	19.5 (19.1, 20.1)	16.1(15.7, 16.7)	4.3 (4.1, 4.5)	0.72 (0.65, 0.81)	0.70 (0.64, 0.77);	0.74 (0.68, 0.81)
ED50 (minimum duration)	14.9 (14.6, 15.2)	11.1 (10.8, 11.4)	2.8 (2.6, 2.8)	0.82 (0.76, 0.87)	0.80 (0.76, 0.85)	0.83 (0.78, 0.88)
ED25	11.1 (11.0, 11.3)	7.2 (7.1, 7.4)	1.5 (1.5, 1.6)	0.91 (0.88, 0.94)	0.90 (0.88, 0.93)	0.92 (0.89, 0.94)
Median	32.2 (32.1, 32.3)	27.0 (26.9, 27.1)	7.2 (7.1, 7.3)	0.63 (0.53, 0.75)	0.65 (0.60, 0.75)	0.67 (0.59, 0.76)
MPA daily minutes						
Methods	ML	1LC	2LC	ML	1LC	2LC
ED100 (optimal duration)	-	-	-	-	-	-
ED75	21.0 (17.6, 29.9)	12.4 (11.9, 14.1)	3.7 (3.2, 5.8)	0.67 (0.58, 0.75)	0.73 (0.67, 0.80)	0.73 (0.66, 0.81)
ED50	14.9 (14.6, 15.2)	8.6 (8.3, 8.9)	2.3 (2.1, 2.5)	0.77 (0.72, 0.82)	0.82 (0.77, 0.87)	0.82 (0.77, 0.87)

(minimum duration)	15.2)	9.3)	2.8)	(0.70, 0.83)	0.87)	0.88)
ED25	10.1 (9.5, 11.1)	5.6 (5.5, 5.9)	1.3 (1.2, 1.5)	0.89 (0.86, 0.92)	0.91 (0.89, 0.94)	0.91 (0.88, 0.94)
Median	32.2 (32.1, 32.3)	19.9 (19.9, 20.0)	5.3 (5.3, 5.4)	0.60 (0.51, 0.70)	0.65 (0.58, 0.73)	0.68 (0.60, 0.77)
VPA daily minutes						
Methods	ML	1LC	2LC	ML	1LC	2LC
ED100 (optimal duration)	-	-	-	-	-	-
ED75	2.3 (1.9, 3.3)	6.6 (4.4, 10.0)	1.8 (1.2, 5.0)	0.60 (0.52, 0.71)	0.69 (0.61, 0.78)	0.7 (0.62, 0.80)
ED50 (minimum duration)	1.4 (1.3, 1.7)	3.5 (2.8, 4.6)	0.8 (0.7, 1.2)	0.76 (0.69, 0.82)	0.79 (0.73, 0.86)	0.81 (0.75, 0.88)
ED25	0.9 (0.8, 1.0)	1.9 (1.6, 2.3)	0.4 (0.3, 0.5)	0.85 (0.81, 0.90)	0.90 (0.87, 0.93)	0.90 (0.86, 0.93)
Median	3.2 (3.2, 3.2)	6.9 (6.9, 7.0)	2.0 (2.0, 2.0)	0.53 (0.44, 0.64)	0.68 (0.60, 0.77)	0.69 (0.61, 0.79)

Note: If there was a nadir point in the dose-response curve, the optimal duration and the corresponding HRs would be presented; otherwise, a “-” would be presented, indicating no upper limit for the optimal dose.

Supplementary Table 3 The duration associated with the ED25, ED50, ED75, ED100 and the median of the intensities duration derived from cadence-based methods (1LC and 2LC)* and machine learning (ML) method with CVD mortality

MVPA daily minutes	Dose (95% CI)			HR (95% CI)		
	Methods	ML	1LC	2LC	ML	1LC
ED100 (optimal duration)	-	32.0 (30.0, 34.7)	18.0 (10.2, 19.9)	-	0.61 (0.47, 0.78)	0.58 (0.48, 0.76)
ED75	20.0 (19.0, 23.5)	15.9 (15.1, 18.7)	5.6 (4.1,9.9)	0.60 (0.50, 0.71)	0.71 (0.59, 0.84)	0.69 (0.58, 0.83)
ED50 (minimum duration)	15.0 (14.5, 16.6)	10.7 (10.3, 12.0)	3.0 (2.5, 3.9)	0.75 (0.68, 0.82)	0.81 (0.72, 0.90)	0.76 (0.66, 0.87)
ED25	11.1 (10.8, 11.8)	7.0 (6.7, 7.5)	1.6 (1.4, 1.9)	0.86 (0.82, 0.91)	0.90 (0.86, 0.95)	0.89 (0.84, 0.94)

Median	32.2 (32.1, 32.3)	27.0 (26.9, 27.1)	7.2 (7.1, 7.3)	0.49 (0.40, 0.61)	0.61 (0.48, 0.79)	0.59 (0.46, 0.77)
MPA daily minutes						
Methods	ML	1LC	2LC	ML	1LC	2LC
ED100 (optimal duration)	-	-	6.4 (5.4, 8.2)	-	-	0.64 (0.47, 0.87)
ED75	17.4 (16.8, 22.3)	13.6 (11.4, 19.9)	3.0 (2.8, 3.4)	0.65 (0.55, 0.77)	0.69 (0.56, 0.84)	0.73 (0.60, 0.88)
ED50 (minimum duration)	12.9 (12.5, 14.9)	9.1 (8.0, 12.6)	1.9 (1.8, 2.1)	0.77 (0.69, 0.85)	0.79 (0.70, 0.90)	0.82 (0.73, 0.92)
ED25	9.4 (9.2, 10.2)	5.5 (5.3, 7.0)	1.1(1.1, 1.2)	0.88 (0.84, 0.93)	0.90 (0.84, 0.95)	0.91 (0.87, 0.96)
Median	27.2 (27.1, 27.3)	19.9 (19.9, 20.0)	5.3 (5.3, 5.4)	0.54 (0.43, 0.68)	0.59 (0.43, 0.81)	0.64 (0.48, 0.86)
VPA daily minutes						
Methods	ML	1LC	2LC	ML	1LC	2LC
ED100 (optimal duration)	-	8.2 (7.1, 9.5)	-	-	0.61 (0.44, 0.85)	-
ED75	13.1 (4.1, 13.4)	3.9 (3.7, 4.2)	1.2 (0.4, 2.1)	0.55 (0.44, 0.69)	0.71 (0.58, 0.86)	0.60 (0.49, 0.75)
ED50 (minimum duration)	9.0 (7.4, 9.3)	2.5 (2.4, 2.7)	0.6 (0.4, 0.9)	0.70 (0.60, 0.83)	0.81 (0.72, 0.91)	0.75 (0.67, 0.85)
ED25	5.3 (3.8, 5.7)	1.5 (1.4, 1.6)	0.3 (0.1, 0.4)	0.86 (0.80, 0.92)	0.90 (0.85, 0.96)	0.86 (0.81, 0.92)
Median	3.2 (3.2, 3.2)	6.9(6.9, 7.0)	2 (1.9, 2.0)	0.59 (0.47, 0.75)	0.62 (0.45, 0.83)	0.52 (0.40, 0.69)

Note: If there was a nadir point in the dose-response curve, the optimal duration and the corresponding HRs would be presented; otherwise, a "-" would be presented, indicating no upper limit for the optimal dose.

Supplementary table 4 The standardized duration associated with ED25, ED50, ED75, ED 100 and the median of the intensities duration derived from cadence-based methods (1LC and 2LC)* and machine learning (ML) method with all-cause mortality

MVPA daily minutes	Standardized minutes			HR (95% CI)		
	ML	1LC	2LC	ML	1LC	2LC
ED25	-0.77	-0.66	-0.60	0.72 (0.65,	0.70 (0.64, 0.77)	0.75 (0.68, 0.82)

				0.81)		
ED50 (minimum duration)	-0.98	-0.82	-0.74	0.82 (0.76, 0.88)	0.80 (0.75, 0.85)	0.83 (0.78, 0.88)
ED75	-1.15	-0.95	-0.85	0.91 (0.88, 0.94)	0.90 (0.88, 0.93)	0.92 (0.89, 0.94)
ED100 (optimal duration)	-0.20	-0.14	-0.16	0.63 (0.53, 0.75)	0.60 (0.53, 0.69)	0.66 (0.58, 0.75)
Median	-0.19	-0.30	-0.36	0.63 (0.53, 0.75)	0.61 (0.53, 0.70)	0.67 (0.60, 0.76)
MPA daily minutes						
Methods	ML	1LC	2LC	ML	1LC	2LC
ED25	-0.54	-0.66	-0.59	0.66 (0.58, 0.76)	0.73 (0.67, 0.80)	0.75 (0.68, 0.82)
ED50 (minimum duration)	-0.86	-0.85	-0.75	0.78 (0.71, 0.84)	0.82 (0.78, 0.87)	0.83 (0.78, 0.88)
ED75	-1.08	-0.99	-0.87	0.89 (0.85, 0.92)	0.91 (0.89, 0.94)	0.92 (0.89, 0.94)
ED100 (optimal)	-	-0.04	0.06	-	0.64 (0.57, 0.73)	0.66 (0.58, 0.75)
Median	-0.20	-0.27	-0.35	0.61 (0.52, 0.71)	0.65 (0.58, 0.74)	0.68 (0.60, 0.77)
VPA daily minutes						
Methods	ML	1LC	2LC	ML	1LC	2LC
ED25	-0.57	-0.40	-0.44	0.61 (0.52, 0.71)	0.69 (0.61, 0.78)	0.73 (0.65, 0.82)
ED50 (minimum duration)	-0.77	-0.67	-0.62	0.73 (0.67, 0.81)	0.80 (0.74, 0.86)	0.82 (0.76, 0.88)
ED75	-0.91	-0.81	-0.74	0.86	0.89 (0.86, 0.92)	0.91 (0.88, 0.94)

				(0.82, 0.90)	0.93)	0.94)
ED100 (optimal duration)	-	-	-	-	-	-
Median	-0.31	-0.35	-0.39	0.53 (0.44, 0.64)	0.68 (0.60, 0.77)	0.71 (0.63, 0.81)

Note: If there was a nadir point in the dose-response curve, the optimal duration and the corresponding HRs would be presented; otherwise, a “-“ would be presented, indicating no upper limit for the optimal dose.

Supplementary table 5 The standardized duration associated with the ED25, ED50, ED75, ED 100 and the median of the intensities duration derived from cadence-based methods (1LC and 2LC)* and machine learning (ML) method with CVD mortality

MVPA daily minutes	Standardized minutes			HR (95% CI)		
	Methods	ML	1LC	2LC	ML	1LC
ED25	-0.68	-0.67	-0.53	0.60 (0.51, 0.71)	0.57 (0.48, 0.67)	0.55 (0.45, 0.68)
ED50 (minimum duration)	-0.94	-0.84	-0.72	0.73 (0.66, -0.81)	0.71 (0.64, 0.79)	0.70 (0.62, 0.79)
ED75	-1.14	-0.96	-0.83	0.87 (0.83, 0.91)	0.85 (0.82, 0.90)	0.85 (0.80, 0.90)
ED100 (optimal duration)	-	-0.06	-	-	0.42 (0.32, 0.55)	-
Median	-0.19	-0.30	-0.36	0.49 (0.40, 0.61)	0.44 (0.34, 0.56)	0.49 (0.39, 0.62)
MPA daily minutes						
Methods	ML	1LC	2LC	ML	1LC	2LC
ED25	-0.70	-0.66	-0.64	0.65 (0.55, 0.73)	0.68 (0.56, 0.73)	0.73 (0.60, 0.73)

				0.77)	0.84)	0.88)
ED50 (minimum duration)	-0.94	-0.85	-0.77	0.77 (0.69, 0.85)	0.79 (0.69, 0.90)	0.82 (0.72, 0.92)
ED75	-1.12	-1.0	-0.88	0.88 (0.84, 0.93)	0.90 (0.85, 0.95)	0.91 (0.86, 0.96)
ED100 (maximum duration)	0.09	0.002	-0.21	0.53 (0.42, -0.67)	0.58 (0.40, 0.83)	0.64 (0.47, 0.87)
Median	-0.20	-0.27	-0.35	0.54 (0.43, 0.68)	0.59 (0.43, 0.81)	0.64 (0.48, 0.86)
VPA daily minutes						
Methods	ML	1LC	2LC	ML	1LC	2LC
ED25	0.17	-0.63	-0.52	0.55 (0.44, 0.69)	0.71 (0.58, 0.86)	0.61 (0.50, 0.76)
ED50 (minimum duration)	-0.63	-0.75	-0.66	0.70 (0.59, 0.83)	0.80 (0.71, 0.91)	0.74 (0.65, 0.84)
ED75	-0.83	-0.85	-0.76	0.82 (0.75, 0.90)	0.90 (0.85, 0.96)	0.87 (0.82, 0.93)
ED100 (optimal duration)	-	-0.23	-	-	0.61 (0.44, 0.85)	-
Median	-0.32	-0.35	-0.35	0.60 (0.48, 0.75)	0.62 (0.46, 0.83)	0.62 (0.46, 0.83)

Note: If there was a nadir point in the dose-response curve, the optimal duration and the corresponding HRs would be presented; otherwise, a “-“ would be presented, indicating no upper limit for the optimal dose.