

1 **A Novel Intervention to Increase Postpartum Primary Care Engagement:**

2 *A Randomized Clinical Trial*

3

4 Mark A. Clapp, MD MPH<sup>1,2</sup>

5 Alaka Ray, MD<sup>1,2</sup>

6 Pichliya Liang, BS<sup>1</sup>

7 Kaitlyn E. James, PhD MPH<sup>1,2</sup>

8 Ishani Ganguli, MD MPH<sup>2,3</sup>

9 Jessica Cohen, PhD<sup>4</sup>

10

11 <sup>1</sup> Massachusetts General Hospital, Boston, MA

12 <sup>2</sup> Harvard Medical School, Boston, MA

13 <sup>3</sup> Brigham & Women's Hospital, Boston MA

14 <sup>4</sup> Harvard TH Chan School of Public Health, Boston, MA

15

16 Corresponding Author:

17 Mark A Clapp, MD MPH

18 Massachusetts General Hospital

19 [mark.clapp@mgh.harvard.edu](mailto:mark.clapp@mgh.harvard.edu)

20 617-724-4531

21

22 Word count

23 Abstract: 335

24 Main text: 3,171

25 **ABSTRACT**

26 Importance: Over 30% of pregnant people have at least one chronic medical condition, and  
27 nearly 20% develop gestational diabetes or pregnancy-related hypertension, increasing the risk  
28 of future chronic disease. While these individuals are often monitored closely during pregnancy,  
29 they face significant barriers when transitioning to primary care following delivery, due in part to  
30 a lack of health care support for this transition.

31 Objective: To evaluate the impact of an intervention designed to improve postpartum primary  
32 care engagement by reducing patient administrative burden and information gaps.

33 Design: Individual-level randomized controlled trial.

34 Setting: One hospital-based and five community-based outpatient obstetric clinics affiliated with  
35 a large academic medical center.

36 Participants: Participants included English- and Spanish-speaking pregnant or recently  
37 postpartum adults with obesity, anxiety, depression, diabetes mellitus, chronic hypertension,  
38 gestational diabetes, or pregnancy-related hypertension, and a primary care clinician (PCP)  
39 listed in their electronic health record (EHR).

40 Intervention: A behavioral economics-informed intervention bundle, including default scheduling  
41 of postpartum PCP appointments and patient messages and reminders with tailored language.

42 Main Outcome: Completion of a PCP visit for routine or chronic condition care within 4 months  
43 of delivery.

44 Results: 360 patients were randomized (Control: N=176, Intervention: N=184). PCP visit  
45 completion within 4 months occurred in 22.0% (95% confidence interval (CI) 16.4-28.8%) in the  
46 control group and 40.0% (95%CI 33.1-47.4%) in the intervention group. In regression models  
47 accounting for randomization strata, the intervention increased PCP visit completion by 18.7  
48 percentage points (95%CI 10.7-29.1). The intervention also significantly decreased postpartum  
49 readmissions, increased receipt of blood pressure, weight, and mood screenings, and increased  
50 PCP-documented plans for contraception and mental health.

51 Conclusions and Relevance: The current lack of support for postpartum transitions to primary  
52 care is a missed opportunity to improve recently pregnant individual's short- and long-term  
53 health. This study found that default PCP visit scheduling, tailored messages, and reminders  
54 can substantially improve postpartum primary care engagement for individuals with or at high  
55 risk for chronic disease. Efforts to reduce patient administrative burdens may be relatively low-  
56 resource, high-impact approaches to improving postpartum health and wellbeing.

57 Trial Registration: NCT05543265.

## 58 INTRODUCTION

59 Although the chronic disease burden in pregnancy is high and growing in the U.S., most  
60 people with chronic conditions do not effectively transition to primary care management  
61 following delivery.<sup>1-9</sup> Over 30% of pregnant people have diabetes, hypertension, or obesity, and  
62 11-22% have anxiety or depression.<sup>10-12</sup> Furthermore, common pregnancy-related conditions  
63 (e.g., gestational diabetes and pregnancy-related hypertension) confer an increased risk of  
64 developing chronic disease.<sup>13-18</sup> Strong evidence underpins the benefits of managing chronic  
65 conditions through primary care and of managing these conditions earlier in life.<sup>19-22</sup> However,  
66 while pregnant people with these conditions are often carefully monitored during pregnancy,  
67 many receive no routine care after their pregnancy, and nearly half of those with chronic  
68 conditions do not see their primary care clinician (PCP) at all in the postpartum year.<sup>23</sup> The  
69 abrupt drop off from high health system engagement and motivation during pregnancy to limited  
70 or no health care encounters postpartum has been termed a “postpartum cliff.”<sup>24</sup> Low rates of  
71 postpartum primary care engagement reflect a missed opportunity to improve the prevention  
72 and management of chronic disease.

73 Postpartum transitions from obstetric to primary care are encouraged by guidelines yet  
74 stymied by numerous barriers. Specifically, obstetric clinical guidelines recommend that  
75 obstetric care providers counsel patients on the importance of primary care follow-up. Yet, a  
76 range of systemic, financial, and behavioral barriers often prevent postpartum people from  
77 effectively transitioning to primary care.<sup>25-29</sup> Patient administrative burden (e.g., appointment  
78 scheduling, information seeking, insurance/billing issues) is increasingly recognized as a barrier  
79 to accessing care.<sup>30</sup> In a recent survey, 33% of patients reported that they delayed or did not  
80 seek health care because of the administrative burden, with women having greater odds of  
81 performing tasks and experiencing burdens.<sup>30</sup> The effects of this burden may be amplified in the  
82 postpartum period when new parents are sleep-deprived and face many competing demands,  
83 including caring for their newborn and family. This study aimed to increase patient engagement

84 in primary care after the immediate postpartum period for pregnant individuals with conditions  
85 that convey a long-term health risk by reducing administrative burden and motivating continued  
86 health activation through an intervention based on insights from behavioral economics.

87

## 88 **METHODS**

### 89 **Study Design**

90 This study was an individual-level, two-group, 1:1 stratified randomized controlled trial of  
91 the effectiveness of a behavioral economics-informed intervention to increase rate of  
92 postpartum primary care visit completion. The study was registered on ClinicalTrials.gov  
93 (NCT05543265) on September 6, 2022, and conducted from November 3, 2022, to October 11,  
94 2023. The Mass General Brigham Human Subjects Committee approved this study. The  
95 Consolidated Standards of Reporting Trials (CONSORT) guidelines were followed in reporting  
96 the study and its results.

97

### 98 **Patient Eligibility**

99 Patients who had obesity (pre-pregnancy body mass index ( $\geq 30$  kg/m<sup>2</sup>)), anxiety or  
100 depressive mood disorder, type 1 or 2 diabetes mellitus, chronic hypertension, gestational  
101 diabetes, or pregnancy-related hypertension listed in their medical record were eligible to  
102 participate. Patients at risk for hypertensive disorders of pregnancy, as determined by the US  
103 Preventative Services Task Force guidelines for prescribing low-dose aspirin, were also  
104 included. Patients with these conditions were prioritized for inclusion in the study as they were  
105 more likely to have ongoing care needs after pregnancy. Also, this study was limited to patients  
106 who had a PCP listed or identified in their medical record, as the barriers and solutions to post-  
107 delivery primary care re-engagement are different than establishing care with a new PCP; a  
108 preliminary analysis of patients receiving obstetric care at the study institution revealed that 90%  
109 had a PCP listed in the EHR. Other eligibility criteria included: 1) pregnant or postpartum within

110 two weeks of their estimated delivery date (EDD), 2) receipt of prenatal care at the study  
111 institution or its affiliated clinics, 3) enrolled and elected to receive messages in the study  
112 institution's EHR patient portal, 4) primary language of English or Spanish, 5) age  $\geq 18$  years at  
113 the time of enrollment, and 6) not actively undergoing a work-up for, or known to have, fetal  
114 demise at the time of enrollment.

115

## 116 **Enrollment and Randomization**

117 Eligible patients were approached in person and via telephone during the eligibility  
118 window (up to two weeks after their EDD). Those who consented to participate in the study were  
119 also asked to consent to receive text (SMS) messages separately. Individuals were randomized  
120 using a randomization table created by the statistician (KEJ) and uploaded directly into the  
121 REDCap randomization module, which was blinded to the primary investigators and study staff.  
122 The assignment sequence was stratified by two variables that were determined a priori to be  
123 important to ensure balance: 1) visit with a PCP within 3 years before the EDD and 2) site of  
124 prenatal care (hospital campus vs. community-based obstetric clinic). Patients were randomized  
125 after they consented and completed a baseline survey.

126

## 127 **Study Intervention**

128 The intervention was designed to increase the rate of postpartum primary care visit  
129 completion within 4 months after the patient's EDD. The bundle included a targeted introduction  
130 message about the importance of seeing their PCP after delivery and informed them that, to  
131 support them in this, a study staff member would be making an appointment on their behalf;  
132 they were allowed to opt-out or communicate about scheduling preferences. For those who did  
133 not opt-out, the study staff called the PCP office and requested that "health care maintenance"  
134 or "annual visit" be scheduled within the target 4-month window. If a patient had already seen  
135 their PCP for an annual visit within the year, they were scheduled for this visit when they were

136 next eligible, even if outside the 4-month study follow-up period. For those who had  
137 appointments scheduled, study-specific appointment reminders were sent approximately 1  
138 month after the EDD and 1 week before the scheduled appointment via the EHR patient portal  
139 and SMS, both used salient labeling to describe the visit; examples are shown in Appendix  
140 (eFigure 1). If the PCP worked in the same health system and an appointment was scheduled,  
141 an electronic message was sent to the PCP from the study staff about the appointment  
142 scheduled by the study staff. For those for whom an appointment could not be scheduled,  
143 similar reminders were sent on the importance of PCP follow-up and encouraged the patient to  
144 contact their PCP's office directly to schedule. Reminders included best practice wording from  
145 behavioral economic nudge “mega-studies,” including that the appointment had been “reserved  
146 for you.”<sup>31</sup> Using salient labeling, the appointment was described as the “Postpartum-to-Primary  
147 Care Transition Appointment.”

148 Patients in the control group received 1 message within 2 weeks of the EDD with a  
149 generic recommendation for PCP follow-up after delivery.

150

## 151 **Study Measures**

152 The primary outcome was completing a primary care visit for routine or chronic condition  
153 care within 4 months of the patient's EDD. Specifically, we considered the outcome to have  
154 occurred if the patient attended a “health care maintenance” (i.e., “annual exam”) visit or a  
155 “problem-based visit” in which obesity, anxiety/depression, diabetes, or hypertension were  
156 addressed with a primary care provider within 4 months after their EDD. This definition was  
157 chosen to include visits most likely to reflect primary care re-engagement after delivery instead  
158 of a visit for an acute illness or issue. This time frame was selected for two reasons: 1) to  
159 capitalize on the increased health activation and motivation that has been noted during  
160 pregnancy and 2) because these patients were more likely to have conditions that required

161 ongoing and active management outside of the traditional postpartum period (up to 12 weeks  
162 after delivery).

163 Alternate specifications for the primary outcome were compared in sensitivity analyses:  
164 1) self-reported PCP visits within 4 months after the EDD, obtained from a survey sent  
165 approximately 5 months after the EDD; 2) primary outcome restricted to visits with the patient's  
166 designated PCP; 3) primary outcome restricted to patients whose PCP was affiliated with the  
167 study institution's health system, 4) primary outcome expanded to include any PCP visit (not  
168 only routine or chronic condition care) within 4 months after a patient's EDD, and 5) primary  
169 outcome expanded to include any completed or scheduled PCP visit within 1 year of a patient's  
170 EDD.

171 We examined secondary outcomes measuring unscheduled care: obstetric triage visit,  
172 emergency room or urgent care use, and readmission within 4 months after the delivery.  
173 Secondary outcomes also included measures of the content of care that occurred at any PCP  
174 visit within 4 months: weight screening, blood pressure screening, mood screening, plan for  
175 diabetes screening, plan for mental health care, and contraception planning. Content of care  
176 outcomes were also compared within population subgroups related to the eligibility health  
177 condition. All outcomes are defined in detail in Appendix (eTable 1).

178 The primary and most secondary outcomes were ascertained directly by reviewing the  
179 patient's medical record approximately 5 months after their EDD. Study staff that performed the  
180 chart review were blinded to the group assignment. Secondary self-reported outcomes were  
181 obtained by an electronic survey sent to patients approximately 5 months after their EDD.

182

### 183 **Sample Size Calculation**

184 Based on a historical cohort, we estimated that 33% of the targeted study population  
185 would have a PCP visit within 4 months of delivery. We estimated the intervention would  
186 increase the rate of PCP visit attendance by at least 15 percentage points, a conservative



187 estimate based on a prior study that examined the impact of default scheduling of postpartum  
188 obstetric care appointments (24 percentage point increase).<sup>32</sup> Assuming an alpha of 0.05 and  
189 power of 80% and using a two-sided z-test, 334 patients were needed to detect a 15-  
190 percentage point difference. To account for individuals who may be lost to follow-up or withdraw,  
191 we planned to randomize 360 patients.

192

### 193 **Statistical Analysis**

194 Patients were analyzed by intention-to-treat. Patients who were lost to follow-up (i.e.,  
195 transferred obstetric care before delivery) or withdrew before the outcome assessment were  
196 excluded. Baseline patient characteristics and the percentage of patients who accessed the  
197 study messages in the EHR patient portal were reported. Primary and secondary outcomes  
198 were compared using chi-squared, t-tests, and Fisher's exact test, where appropriate. The  
199 percentage point difference in outcomes between the two groups was estimated using a linear  
200 probability regression model that included two indicator terms for the randomization strata,  
201 which were defined *a priori*.

202 A heterogeneity analysis was performed to understand the potential impact of the  
203 intervention among patient factors known or hypothesized to be disproportionately affected by  
204 administrative burdens. The primary outcome was compared among subgroups based on site of  
205 prenatal care (hospital- vs. community-based clinic), chronic conditions (anxiety/depression,  
206 diabetes, hypertension, obesity, and multi-morbidity, defined as >1 of the listed conditions), race  
207 (self-described Asian, Black, White, Other or multiple races), ethnicity (self-described Hispanic  
208 or non-Hispanic), individual earnings/income (<\$30,000, \$30-75,000, or >\$75,000), primary  
209 payer for delivery hospitalization (Medicaid or Private/Other), and self-reported physical and  
210 mental health status at time of enrollment.<sup>30,33</sup>

211 Stata 16.1 (StataCorp, College Station, TX) was used for the analysis. P-values <0.05  
212 were considered statistically significant.

213

## 214 RESULTS

215 Initially, 574 patients were identified as likely to be eligible based on pre-defined eligibility  
216 filters within the EHR (Figure 1). Upon chart review, 35 were determined ineligible. Of those  
217 confirmed eligible, 77 could not be contacted and 102 declined. 360 patients were randomized:  
218 176 to the control group and 184 to the intervention group. Six patients were excluded from the  
219 final analysis because they transferred their care to another institution before delivery (3 in each  
220 group). One patient in the intervention group withdrew from the study before the end of the  
221 follow-up period. The final number of patients analyzed in each group was 173 in the control  
222 group and 180 in the intervention group. Among study participants, 345/353 (97.7%) accessed  
223 study-related messages in the online patient portal. The proportion of patients in the intervention  
224 group who received each component of the intervention bundle is included in the Appendix  
225 (eTable 2); the study staff scheduled appointments for 137 participants (76.1%), of whom only 6  
226 (4.4%) did not present for or cancel their appointment. Of all participants, 61.8% completed the  
227 online electronic survey 5 months after the EDD.

228 The intervention and control groups were balanced in all baseline patient characteristics  
229 (Table 1). Of the eligibility conditions, which were not mutually exclusive, 75.8% of all  
230 participants had anxiety or depression, 15.9% had a chronic or pregnancy-related hypertensive  
231 disorder, 19.8% had pre-existing or gestational diabetes, and 40.4% had a pre-pregnancy BMI  
232  $\geq 30$  kg/m<sup>2</sup>. Medicaid was the primary payer for the delivery encounter for 21.9% of patients.  
233 When surveyed, 11.6% reported their physical health and 19.6% reported their mental health as  
234 “fair” or “poor” condition. At enrollment, 34.3% had not seen any PCP within the prior 3 years,  
235 and 29.2% were receiving obstetric care at one of the hospital’s satellite or affiliated health  
236 center clinics.

237 Table 2 shows the effects of the intervention on completion of a primary care visit for  
238 routine or chronic condition care within 4 months of the patient’s EDD. This primary outcome

239 occurred in 40.0% (95% confidence interval (CI) 33.1-47.4%) of the intervention group and  
240 22.0% (95%CI 6.4-28.8%) of the control group ( $p<0.001$ ). When adjusting for pre-specified  
241 randomization strata, the intervention increased the primary outcome by 18.7 percentage points  
242 (pp) (95%CI 9.1-28.2 pp). The effects on the primary outcome were similar in the sensitivity  
243 analyses (Table 3). For other measures of care utilization, there were no statistically significant  
244 effects on obstetric triage visits (16.2 vs 15.6%,  $p=0.87$ ) or emergency or urgent care use (11.1  
245 vs. 13.3% ( $p=0.53$ )). However, the intervention group had fewer postpartum readmissions: 1.7%  
246 vs. 5.8% ( $p=0.04$ ).

247 Figure 2 compares the secondary outcomes related to the content or provision of care  
248 between the two groups. Among all patients, the intervention increased the number of  
249 individuals who had a weight (42.8 vs. 38.3%,  $p=0.005$ ), blood pressure (42.8 vs. 27.7%,  
250  $p=0.003$ ), or mood (32.8 vs. 16.8%,  $p<0.001$ ) screening performed at a PCP visit. The  
251 intervention also increased the number of individuals who had a plan documented about their  
252 mental health (37.2 vs. 23.1%,  $p<0.001$ ) and for contraception (18.2 vs 9.5%,  $p=0.02$ ) at a PCP  
253 visit. There was no difference in a documented plan for diabetes screening between the two  
254 groups. Comparisons of the secondary outcomes related to the content of care among  
255 subgroups of health conditions are shown in eTable 3 in the Appendix, though many were  
256 limited by small sample sizes.

257 eTable 4 in the Appendix shows treatment effect heterogeneity across health conditions,  
258 demographic characteristics, and baseline self-reported physical and mental health. While the  
259 study was not designed to detect outcomes within subgroups, the intervention led to significant  
260 increases in PCP visits among nearly all subgroups examined.

261

## 262 **DISCUSSION**

263 Among pregnant people with common comorbidities, a behavioral economics-informed  
264 intervention bundle, including opt-out appointment scheduling, tailored messaging, and nudge

265 reminders, increased PCP visit completion within 4 months postpartum by approximately 20  
266 percentage points, a nearly 2-fold increase. The primary finding was robust to multiple  
267 definitions or variations of the primary outcome, including self-reported PCP visit attendance.  
268 The effects on the primary outcome appeared largely consistent among population subgroups,  
269 though small sample sizes limited power in these comparisons. Not only did the intervention  
270 increase PCP visit completion, but it also resulted in more individuals receiving important  
271 screening tests and services; however, larger studies are needed to examine many condition-  
272 specific measures of the content of primary care. There were no observed changes in emergent  
273 or urgent care visits between the two groups; however, any potential effects of facilitated  
274 primary care engagement on emergent care use are more likely to occur later in the postpartum  
275 year or beyond, and we intend to measure longer-term care utilization and outcomes in future  
276 studies. Interestingly, the banded intervention did decrease postpartum readmissions.

277 Our results suggest that behavioral economic-informed interventions that reduce patient  
278 administrative burden have the potential to be relatively low-resource, high-impact approaches  
279 to increasing primary care use, a critical priority in the context of declining and inequitable  
280 primary care engagement in the U.S.<sup>34,35</sup> Behavioral economics research examines how people  
281 make predictable decision errors and tests interventions that leverage these insights to remove  
282 behavioral barriers (“nudges”).<sup>36–46</sup> These interventions often try to make it easier for people to  
283 make choices they already want to undertake but are not. In-kind, the underlying hypothesis of  
284 the present study was that many postpartum individuals with or at high risk for chronic  
285 conditions who have a PCP assigned want to be under the care of their PCP but face multiple  
286 barriers to primary care engagement in the postpartum period, including identifying who their  
287 PCP is and scheduling with them. Our study design was built to address two common  
288 behavioral barriers, namely, inattention and status-quo bias, and demonstrated how default  
289 primary care appointment scheduling, a salient label for the appointment, and tailored SMS  
290 messages and appointment reminders can increase postpartum primary care engagement.

291 Similar approaches have effectively motivated other health behaviors, including in obstetric and  
292 postpartum care.<sup>46–50</sup>

293 This study builds on prior efforts to improve postpartum health and wellbeing.<sup>51–58</sup> Our  
294 study is most closely aligned with the intervention research on postpartum care navigation, in  
295 which patient navigators identify and holistically address patient-level barriers to care and assist  
296 with care coordination.<sup>51,59</sup> Although obstetric care navigators hold great promise for improving  
297 postpartum health care use, that level of intervention intensity and cost may not be necessary  
298 for most postpartum people needing primary care. Results from this study suggest that reducing  
299 some patient administrative barriers may be a relatively resource-conscious but highly effective  
300 approach to encouraging postpartum primary care transitions. Specifically, we demonstrated  
301 this intervention could be delivered consistently, with the successful scheduling of an “annual  
302 visit” appointment for 76% of participants and a low “no-show” appointment rate of only 4%.

303 The strengths of this study are its robust randomized controlled trial design and the  
304 augmentation of observed outcomes within the EHR with self-reported outcomes. The study had  
305 several limitations. We observed health care encounters within a single health system, though  
306 the health system is large (>1,300 PCPs). We could not observe PCP visits for clinicians who do  
307 not use or are not affiliated with the health system’s common EHR (Epic); as an alternate  
308 measure, we did examine self-reports of PCP visits. This study focused on individuals who had  
309 an identified PCP at enrollment; given the limited availability of PCPs in certain areas, the effect  
310 of the intervention may be lessened for individuals seeking to establish care with a new PCP.  
311 Last, the study was not powered to detect differences in many secondary outcomes related to  
312 the content of primary care within health conditions, and larger studies are needed to ascertain  
313 the impact of the intervention on the quality of primary care for specific conditions.

314 In conclusion, a behavioral economics-informed intervention to improve postpartum  
315 transitions to primary care substantially increased postpartum primary care visit completion for  
316 patients with or at risk for common comorbidities. Targeting a vulnerable population at a critical

317 time, this intervention represents a potentially scalable approach to increasing primary care  
318 engagement and ongoing health condition management in the postpartum months and beyond.  
319 Ongoing follow-up related to this study seeks to analyze the intervention's impact on condition-  
320 specific management (i.e., the content and quality of care provided in the postpartum period)  
321 and its long-term impact on health outcomes.

322 Disclosures: Dr. Clapp is a scientific medical advisor and has private equity for Delfina Care,  
323 which is not related and was not involved in this study. Dr. Ganguli received consulting fees from  
324 F-Prime for advising unrelated to this work.

325  
326 Presentations: Initial results from this study were presented at the University of Pennsylvania  
327 Center for Health Incentives and Behavioral Economics Research Conference (October 30,  
328 2023; Philadelphia, PA), the 2023 Association for Public Policy Analysis and Management  
329 (APPAM) Fall Research Conference (November 9-11, 2023; Atlanta, GA) and the American  
330 Economic Association Annual Meeting (January 5-7, 2024; San Antonio, TX). The study has  
331 been submitted for presentation at the 2024 American Society for Health Economists  
332 conference (June 16-19, 2024; San Diego, CA).

333  
334 Previous Publication: A version of this manuscript was posted on the preprint server medrxiv.org  
335 (<https://doi.org/10.1101/2024.01.21.24301585>) so that it could be referenced in a recent grant  
336 proposal.

337  
338 Funding: This study was funded by the National Institute on Aging via the MIT Roybal Center for  
339 Translational Research to Improve Health Care for the Aging (P30AG064190) and the NBER  
340 Roybal Center for Behavior Change in Health (P30AG034532). Dr. Ganguli was supported by  
341 K23AG068240 from the National Institute on Aging. Additional support was provided by the  
342 National Academy of Medicine's Health Catalyst Award. The funders had no role in the oversight  
343 or conduct of this trial.

344  
345 Acknowledgments: The authors would like to thank Hasan Quadri and Fowsia Warsame for their  
346 assistance in conducting this trial.

347 **REFERENCES**

348

- 349 1. Admon LK, Winkelman TNA, Moniz MH, Davis MM, Heisler M, Dalton VK. Disparities in  
350 Chronic Conditions Among Women Hospitalized for Delivery in the United States, 2005-  
351 2014. *Obstet Gynecol.* 2017;130(6):1319-1326. doi:10.1097/AOG.0000000000002357
- 352 2. Bateman BT, Bansil P, Hernandez-Diaz S, Mhyre JM, Callaghan WM, Kuklina EV.  
353 Prevalence, trends, and outcomes of chronic hypertension: a nationwide sample of delivery  
354 admissions. *Am J Obstet Gynecol.* 2012;206(2):134.e1-8. doi:10.1016/j.ajog.2011.10.878
- 355 3. Bardenheier BH, Imperatore G, Gilboa SM, et al. Trends in Gestational Diabetes Among  
356 Hospital Deliveries in 19 U.S. States, 2000-2010. *Am J Prev Med.* 2015;49(1):12-19.  
357 doi:10.1016/j.amepre.2015.01.026
- 358 4. Flegal KM, Carroll MD, Kit BK, Ogden CL. Prevalence of Obesity and Trends in the  
359 Distribution of Body Mass Index Among US Adults, 1999-2010. *JAMA.* 2012;307(5):491-  
360 497. doi:10.1001/jama.2012.39
- 361 5. Li M, Gong W, Wang S, Li Z. Trends in body mass index, overweight and obesity among  
362 adults in the USA, the NHANES from 2003 to 2018: a repeat cross-sectional survey. *BMJ*  
363 *Open.* 2022;12(12):e065425. doi:10.1136/bmjopen-2022-065425
- 364 6. Fisher SC, Kim SY, Sharma AJ, Rochat R, Morrow B. Is obesity still increasing among  
365 pregnant women? Prepregnancy obesity trends in 20 states, 2003–2009. *Prev Med.*  
366 2013;56(6):372-378. doi:10.1016/j.ypmed.2013.02.015
- 367 7. Thomas DT, Benson G, Gan A, Schwager S, Okeson B, Baechler CJ. Fourth Trimester:  
368 Assessing Women’s Health Equity and Long-Term Cardiovascular Outcomes in a Large  
369 Midwestern Health System in 2021. *Circulation: Cardiovascular Quality and Outcomes.*  
370 2024;17(1):e010157. doi:10.1161/CIRCOUTCOMES.123.010157
- 371 8. Lewey J, Levine LD, Yang L, Triebwasser JE, Groeneveld PW. Patterns of Postpartum  
372 Ambulatory Care Follow-up Care Among Women With Hypertensive Disorders of  
373 Pregnancy. *Journal of the American Heart Association.* 2020;9(17):e016357.  
374 doi:10.1161/JAHA.120.016357
- 375 9. D’Amico R, Dalmacy D, Akinduro JA, et al. Patterns of Postpartum Primary Care Follow-up  
376 and Diabetes-Related Care After Diagnosis of Gestational Diabetes. *JAMA Network Open.*  
377 2023;6(2):e2254765. doi:10.1001/jamanetworkopen.2022.54765
- 378 10. NVSS - Birth Data. Published April 10, 2023. Accessed May 1, 2023.  
379 <https://www.cdc.gov/nchs/nvss/births.htm>
- 380 11. Bauman BL. Vital Signs: Postpartum Depressive Symptoms and Provider Discussions  
381 About Perinatal Depression — United States, 2018. *MMWR Morb Mortal Wkly Rep.*  
382 2020;69. doi:10.15585/mmwr.mm6919a2
- 383 12. Rokicki S, Steenland MW, Geiger CK, et al. Trends in postpartum mental health care before  
384 and during COVID-19. *Health Serv Res.* 2022;57(6):1342-1347. doi:10.1111/1475-  
385 6773.14051



- 386 13. Gestational Hypertension and Preeclampsia: ACOG Practice Bulletin, Number 222. *Obstet*  
387 *Gynecol.* 2020;135(6):e237-e260. doi:10.1097/AOG.0000000000003891
- 388 14. Vounzoulaki E, Khunti K, Abner SC, Tan BK, Davies MJ, Gillies CL. Progression to type 2  
389 diabetes in women with a known history of gestational diabetes: systematic review and  
390 meta-analysis. *BMJ.* 2020;369:m1361. doi:10.1136/bmj.m1361
- 391 15. Diaz-Santana MV, O'Brien KM, Park YMM, Sandler DP, Weinberg CR. Persistence of Risk  
392 for Type 2 Diabetes After Gestational Diabetes Mellitus. *Diabetes Care.* 2022;45(4):864-870.  
393 doi:10.2337/dc21-1430
- 394 16. Wang YX, Arvizu M, Rich-Edwards JW, et al. Hypertensive Disorders of Pregnancy and  
395 Subsequent Risk of Premature Mortality. *J Am Coll Cardiol.* 2021;77(10):1302-1312.  
396 doi:10.1016/j.jacc.2021.01.018
- 397 17. Wu P, Haththotuwa R, Kwok CS, et al. Preeclampsia and Future Cardiovascular Health: A  
398 Systematic Review and Meta-Analysis. *Circ Cardiovasc Qual Outcomes.*  
399 2017;10(2):e003497. doi:10.1161/CIRCOUTCOMES.116.003497
- 400 18. ACOG Practice Bulletin No. 190: Gestational Diabetes Mellitus. *Obstet Gynecol.*  
401 2018;131(2):e49-e64. doi:10.1097/AOG.0000000000002501
- 402 19. Ashburner JM, Horn DM, O'Keefe SM, et al. Chronic disease outcomes from primary care  
403 population health program implementation. *Am J Manag Care.* 2017;23(12):728-735.
- 404 20. Sung NJ, Markuns JF, Park KH, Kim K, Lee H, Lee JH. Higher quality primary care is  
405 associated with good self-rated health status. *Fam Pract.* 2013;30(5):568-575.  
406 doi:10.1093/fampra/cmt021
- 407 21. Starfield B, Shi L, Macinko J. Contribution of primary care to health systems and health.  
408 *Milbank Q.* 2005;83(3):457-502. doi:10.1111/j.1468-0009.2005.00409.x
- 409 22. Hughes LS, Cohen DJ, Phillips RL Jr. Strengthening Primary Care to Improve Health  
410 Outcomes in the US—Creating Oversight to Address Invisibility. *JAMA Health Forum.*  
411 2022;3(9):e222903. doi:10.1001/jamahealthforum.2022.2903
- 412 23. Bennett WL, Chang HY, Levine DM, et al. Utilization of primary and obstetric care after  
413 medically complicated pregnancies: an analysis of medical claims data. *J Gen Intern Med.*  
414 2014;29(4):636-645. doi:10.1007/s11606-013-2744-2
- 415 24. Cohen JL, Daw JR. Postpartum Cliffs—Missed Opportunities to Promote Maternal Health in  
416 the United States. *JAMA Health Forum.* 2021;2(12):e214164.  
417 doi:10.1001/jamahealthforum.2021.4164
- 418 25. Bellerose M, Rodriguez M, Vivier PM. A systematic review of the qualitative literature on  
419 barriers to high-quality prenatal and postpartum care among low-income women. *Health*  
420 *Services Research.* 2022;57(4):775-785. doi:10.1111/1475-6773.14008
- 421 26. Ruderman RS, Dahl EC, Williams BR, et al. Provider Perspectives on Barriers and  
422 Facilitators to Postpartum Care for Low-Income Individuals. *Womens Health Rep (New*  
423 *Rochelle).* 2021;2(1):254-262. doi:10.1089/whr.2021.0009

- 424 27. Admon LK, Daw JR, Interrante JD, Ibrahim BB, Millette MJ, Kozhimannil KB. Rural and  
425 Urban Differences in Insurance Coverage at Prepregnancy, Birth, and Postpartum.  
426 *Obstetrics & Gynecology*. 2023;141(3):570. doi:10.1097/AOG.0000000000005081
- 427 28. Johnston EM, McMorrow S, Alvarez Caraveo C, Dubay L. Post-ACA, More Than One-Third  
428 Of Women With Prenatal Medicaid Remained Uninsured Before Or After Pregnancy. *Health*  
429 *Affairs*. 2021;40(4):571-578. doi:10.1377/hlthaff.2020.01678
- 430 29. Saldanha IJ, Adam GP, Kanaan G, et al. Health Insurance Coverage and Postpartum  
431 Outcomes in the US: A Systematic Review. *JAMA Network Open*. 2023;6(6):e2316536.  
432 doi:10.1001/jamanetworkopen.2023.16536
- 433 30. Kyle MA, Frakt AB. Patient administrative burden in the US health care system. *Health Serv*  
434 *Res*. 2021;56(5):755-765. doi:10.1111/1475-6773.13861
- 435 31. Milkman KL, Patel MS, Gandhi L, et al. A megastudy of text-based nudges encouraging  
436 patients to get vaccinated at an upcoming doctor's appointment. *Proceedings of the*  
437 *National Academy of Sciences*. 2021;118(20):e2101165118. doi:10.1073/pnas.2101165118
- 438 32. Polk S, Edwardson J, Lawson S, et al. Bridging the Postpartum Gap: A Randomized  
439 Controlled Trial to Improve Postpartum Visit Attendance Among Low-Income Women with  
440 Limited English Proficiency. *Women's Health Reports*. 2021;2(1):381-388.  
441 doi:10.1089/whr.2020.0123
- 442 33. Sav A, Whitty JA, McMillan SS, et al. Treatment Burden and Chronic Illness: Who is at Most  
443 Risk? *Patient*. 2016;9(6):559-569. doi:10.1007/s40271-016-0175-y
- 444 34. Ganguli I, Lee TH, Mehrotra A. Evidence and Implications Behind a National Decline in  
445 Primary Care Visits. *J GEN INTERN MED*. 2019;34(10):2260-2263. doi:10.1007/s11606-  
446 019-05104-5
- 447 35. Rao A, Shi Z, Ray KN, Mehrotra A, Ganguli I. National Trends in Primary Care Visit Use and  
448 Practice Capabilities, 2008-2015. *The Annals of Family Medicine*. 2019;17(6):538-544.  
449 doi:10.1370/afm.2474
- 450 36. Rice T. The Behavioral Economics of Health and Health Care. *Annual Review of Public*  
451 *Health*. 2013;34(1):431-447. doi:10.1146/annurev-publhealth-031912-114353
- 452 37. Jenssen BP, Buttenheim AM, Fiks AG. Using Behavioral Economics to Encourage Parent  
453 Behavior Change: Opportunities to Improve Clinical Effectiveness. *Acad Pediatr*.  
454 2019;19(1):4-10. doi:10.1016/j.acap.2018.08.010
- 455 38. Matjasko JL, Cawley JH, Baker-Goering MM, Yokum DV. Applying Behavioral Economics to  
456 Public Health Policy. *Am J Prev Med*. 2016;50(5 Suppl 1):S13-S19.  
457 doi:10.1016/j.amepre.2016.02.007
- 458 39. Milkman KL, Gromet D, Ho H, et al. Megastudies improve the impact of applied behavioural  
459 science. *Nature*. 2021;600(7889):478-483. doi:10.1038/s41586-021-04128-4
- 460 40. Chapman GB, Li M, Colby H, Yoon H. Opting in vs opting out of influenza vaccination.  
461 *JAMA*. 2010;304(1):43-44. doi:10.1001/jama.2010.892

- 462 41. Waddell KJ, Mehta SJ. Designing Effective and Appropriate Opt-Out Approaches for Patient  
463 Outreach. *JAMA Intern Med.* 2023;183(11):1194-1195.  
464 doi:10.1001/jamainternmed.2023.4628
- 465 42. Mehta SJ, Khan T, Guerra C, et al. A Randomized Controlled Trial of Opt-in Versus Opt-Out  
466 Colorectal Cancer Screening Outreach. *Am J Gastroenterol.* 2018;113(12):1848-1854.  
467 doi:10.1038/s41395-018-0151-3
- 468 43. National Academies of Sciences, Engineering, and Medicine; Division of Behavioral and  
469 Social Sciences and Education; Board on Behavioral, Cognitive, and Sensory Sciences;  
470 Committee on Future Directions for Applying Behavioral Economics to Policy. *Behavioral*  
471 *Economics: Policy Impact and Future Directions.* (Beatty A, Moffitt R, Buttenheim A, eds.).  
472 National Academies Press (US); 2023. Accessed February 16, 2024.  
473 <http://www.ncbi.nlm.nih.gov/books/NBK591019/>
- 474 44. Gelfand SD. The Meta-Nudge - A Response to the Claim That the Use of Nudges During the  
475 Informed Consent Process is Unavoidable. *Bioethics.* 2016;30(8):601-608.  
476 doi:10.1111/bioe.12266
- 477 45. Ghebreyesus TA. Using behavioural science for better health. *Bull World Health Organ.*  
478 2021;99(11):755. doi:10.2471/BLT.21.287387
- 479 46. Sabety A, Gruber J, Bae JY, Sood R. Reducing Frictions in Health Care Access: The  
480 ActionHealthNYC Experiment for Undocumented Immigrants. *American Economic Review:*  
481 *Insights.* 2023;5(3):327-346. doi:10.1257/aeri.20220126
- 482 47. Bogale B, Mørkrid K, O'Donnell B, et al. Development of a targeted client communication  
483 intervention for pregnant and post-partum women: a descriptive study. *Lancet.* 2021;398  
484 Suppl 1:S18. doi:10.1016/S0140-6736(21)01504-X
- 485 48. South EC, Lee K, Oyekanmi K, et al. Nurtured in Nature: a Pilot Randomized Controlled  
486 Trial to Increase Time in Greenspace among Urban-Dwelling Postpartum Women. *J Urban*  
487 *Health.* 2021;98(6):822-831. doi:10.1007/s11524-021-00544-z
- 488 49. McConnell M, Rothschild CW, Ettenger A, Muigai F, Cohen J. Free contraception and  
489 behavioural nudges in the postpartum period: evidence from a randomised control trial in  
490 Nairobi, Kenya. *BMJ Glob Health.* 2018;3(5):e000888. doi:10.1136/bmjgh-2018-000888
- 491 50. Triebwasser JE, Lewey J, Walheim L, Sehdev HM, Srinivas SK. Electronic Reminder to  
492 Transition Care After Hypertensive Disorders of Pregnancy: A Randomized Controlled Trial.  
493 *Obstet Gynecol.* 2023;142(1):91-98. doi:10.1097/AOG.0000000000005237
- 494 51. Yee LM, Martinez NG, Nguyen AT, Hajjar N, Chen MJ, Simon MA. Using a Patient Navigator  
495 to Improve Postpartum Care in an Urban Women's Health Clinic. *Obstet Gynecol.*  
496 2017;129(5):925-933. doi:10.1097/AOG.0000000000001977
- 497 52. Himes KP, Donovan H, Wang S, Weaver C, Grove JR, Facco FL. Healthy Beyond  
498 Pregnancy, a Web-Based Intervention to Improve Adherence to Postpartum Care:  
499 Randomized Controlled Feasibility Trial. *JMIR Human Factors.* 2017;4(4):e7964.  
500 doi:10.2196/humanfactors.7964

- 501 53. Kabakian-Khasholian T, Campbell OMR. A simple way to increase service use: triggers of  
502 women's uptake of postpartum services. *BJOG: An International Journal of Obstetrics &*  
503 *Gynaecology*. 2005;112(9):1315-1321. doi:10.1111/j.1471-0528.2004.00507.x
- 504 54. Polk S, Edwardson J, Lawson S, et al. Bridging the Postpartum Gap: A Randomized  
505 Controlled Trial to Improve Postpartum Visit Attendance Among Low-Income Women with  
506 Limited English Proficiency. *Women's Health Reports*. 2021;2(1):381-388.  
507 doi:10.1089/whr.2020.0123
- 508 55. Attanasio LB, Ranchoff BL, Cooper MI, Geissler KH. Postpartum Visit Attendance in the  
509 United States: A Systematic Review. *Women's Health Issues*. 2022;32(4):369-375.  
510 doi:10.1016/j.whi.2022.02.002
- 511 56. Wilcox A, Levi EE, Garrett JM. Predictors of Non-Attendance to the Postpartum Follow-up  
512 Visit. *Matern Child Health J*. 2016;20(1):22-27. doi:10.1007/s10995-016-2184-9
- 513 57. Masho SW, Cha S, Karjane N, et al. Correlates of Postpartum Visits Among Medicaid  
514 Recipients: An Analysis Using Claims Data from a Managed Care Organization. *Journal of*  
515 *Women's Health*. 2018;27(6):836-843. doi:10.1089/jwh.2016.6137
- 516 58. Soffer MD, Rekawek P, Pan S, Overbey J, Stone J. Improving Postpartum Attendance  
517 among Women with Gestational Diabetes Using the Medical Home Model of Care. *Am J*  
518 *Perinatol*. 2023;40(3):313-318. doi:10.1055/s-0041-1727216
- 519 59. McKenney KM, Martinez NG, Yee LM. Patient navigation across the spectrum of women's  
520 health care in the United States. *Am J Obstet Gynecol*. 2018;218(3):280-286.  
521 doi:10.1016/j.ajog.2017.08.009
- 522  
523

524 **TABLES**

525

526 **Table 1.** Baseline Characteristics of the Analytical Sample

527

<b>Characteristic</b>	<b>Control Group (n=173)</b>	<b>Intervention Group (n=180)</b>
Patient Age at Estimated Due Date, Mean (SD), Years	34.0 (5.0)	34.2 (4.8)
Enrollment Relative to Delivery		
During Pregnancy	170 (98.3)	173 (96.1)
Postpartum	8 (1.7)	7 (3.9)
Gestational Age at Enrollment, Mean (SD), Days	254 (20)	255 (20)
Primary Site of Prenatal Care		
Hospital-based Clinic	121 (69.9)	129 (71.7)
Community-based Clinic	52 (30.1)	51 (28.3)
PCP Visit within 3 Years Prior to Enrollment	121 (69.9)	111 (61.7)
Health Condition		
Anxiety or Depression	128 (74.0)	138 (76.7)
Chronic or Gestational Hypertensive Disorder	26 (15.0)	31 (17.2)
Chronic or Gestational Diabetes Mellitus	38 (22.0)	31 (17.2)
Obesity (Pre-pregnancy BMI $\geq$ 30 kg/m <sup>2</sup> )	75 (43.4)	69 (38.3)
Race <sup>1</sup>		
Asian	13 (7.5)	11 (6.1)
Black	12 (6.9)	14 (7.8)
Multiple Races or "Other" <sup>2</sup>	28 (16.2)	25 (13.9)
White	115 (66.5)	127 (70.6)
Declined / Not reported	5 (2.9)	3 (1.7)
Ethnicity <sup>1</sup>		
Hispanic	41 (23.7)	37 (20.6)
Non-Hispanic	127 (73.4)	139 (77.2)
Not reported	5 (2.9)	4 (2.2)
Preferred Language <sup>1</sup>		
English	161 (93.1)	167 (92.8)
Spanish	12 (6.9)	13 (7.2)
Marital Status <sup>1</sup>		
Married	125 (72.3)	137 (76.1)
Not married	48 (27.7)	43 (23.8)
Education <sup>1</sup>		
High School Graduate or Some High School	30 (17.3)	22 (12.2)
Some College	11 (6.4)	22 (12.2)
Bachelor's or Associate Degree	69 (39.9)	71 (39.4)
Graduate School Degree	63 (36.4)	65 (36.1)
Individual Annual Earnings <sup>1</sup>		
<\$30,000	32 (18.5)	36 (20.0)
\$30,000 - \$74,999	37 (21.4)	55 (30.6)
$\geq$ \$75,000	82 (47.4)	76 (42.2)
Not reported	22 (12.7)	13 (7.2)
Primary Payer for Delivery Hospitalization		
Medicaid	40 (23.1)	35 (19.4)
Private / Other	130 (75.1)	138 (76.7)
Unknown	3 (1.7)	7 (3.9)
Physical Health Status at Time of Enrollment <sup>1</sup>		
"Good", "Very Good," or "Excellent"	151 (87.3)	161 (89.4)
"Fair" or "Poor"	22 (12.7)	19 (10.6)

Mental Health Status at Time of Enrollment <sup>1</sup>		
"Good", "Very Good," or "Excellent"	136 (78.6)	148 (82.2)
"Fair" or "Poor"	37 (21.4)	32 (17.8)

528  
529 <sup>1</sup> Self-reported.  
530 <sup>2</sup> Patients could select "Other" as a race option if they did not self-identify with the other options: American  
531 Indian or Alaskan Native, Asian, Black, Native Hawaiian or Other Pacific Islander, White.  
532 Abbreviation: PCP, Primary Care Clinician  
533

534 **Table 2. Effects on Care Utilization**

535

<b>Outcomes</b>	<b>Control Group n (%)</b>	<b>Intervention Group n (%)</b>	<b>p-value</b>	<b>Adjusted Between-group difference, percentage point (95% CI)<sup>1</sup></b>
<b>Primary Outcome</b>				
Completion of a primary care visit for routine or chronic condition care within 4 months of EDD	38 (22.0%)	72/180 (40.0)	<b>&lt;0.001</b>	18.7 (9.0 to 28.2)
<b>Secondary Outcomes of Unscheduled Care Use</b>				
Obstetric triage visit	28 (16.2%)	28 (15.6%)	0.87	-0.1 (-8.2 to 7.2)
Emergency department or urgent care visit	23 (13.3%)	20 (11.1%)	0.53	-1.8 (-8.6 to 5.0)
Postpartum readmission	10 (5.8)	3 (1.7%)	<b>0.04</b>	-3.9 (-7.8 to -0.1)

536

537 Abbreviation: CI, confidence interval; EDD, estimated date of delivery; PCP, Primary Care Clinician.  
538 More descriptive definitions for all outcomes are included in the Appendix (eTable 2).

539

540 <sup>1</sup> To account for randomization strata, regressions include indicator variables for whether or not the  
541 participant had any PCP visit in the 3 years before randomization and whether the participant received  
542 prenatal care from a hospital or health center.

543

544

545 **Table 3. Sensitivity Analyses for the Primary Outcome**

546

<b>Sensitivity Analysis</b>	<b>Control Group n (%)</b>	<b>Intervention Group n (%)</b>	<b>p-value</b>	<b>Adjusted Between-group difference, percentage point (95 CI)<sup>†</sup></b>
Self-reported PCP visit completion within 4 months of delivery	46/113 (40.7)	65/105 (61.9)	<b>0.002</b>	20.1 (7.0 to 33.3)
Primary outcome restricted to visits with the patient's designated PCP	23/173 (13.3)	50/180 (27.8)	<b>0.001</b>	15.1 (6.7 to 23.5)
Primary outcome restricted to patients whose PCP in the same health system	30/123 (24.4)	58/118 (49.2)	<b>&lt;0.001</b>	24.6 (12.5 to 36.6)
Any primary care visit within 4 months of EDD	54/173 (31.1)	82/180 (25.6)	<b>0.006</b>	15.1 (5.0 to 25.3)
Any primary care visit or scheduled within 1 year of EDD	75/173 (43.4)	117/180 (65.0)	<b>&lt;0.001</b>	24.0 (14.2 to 33.8)

547

548

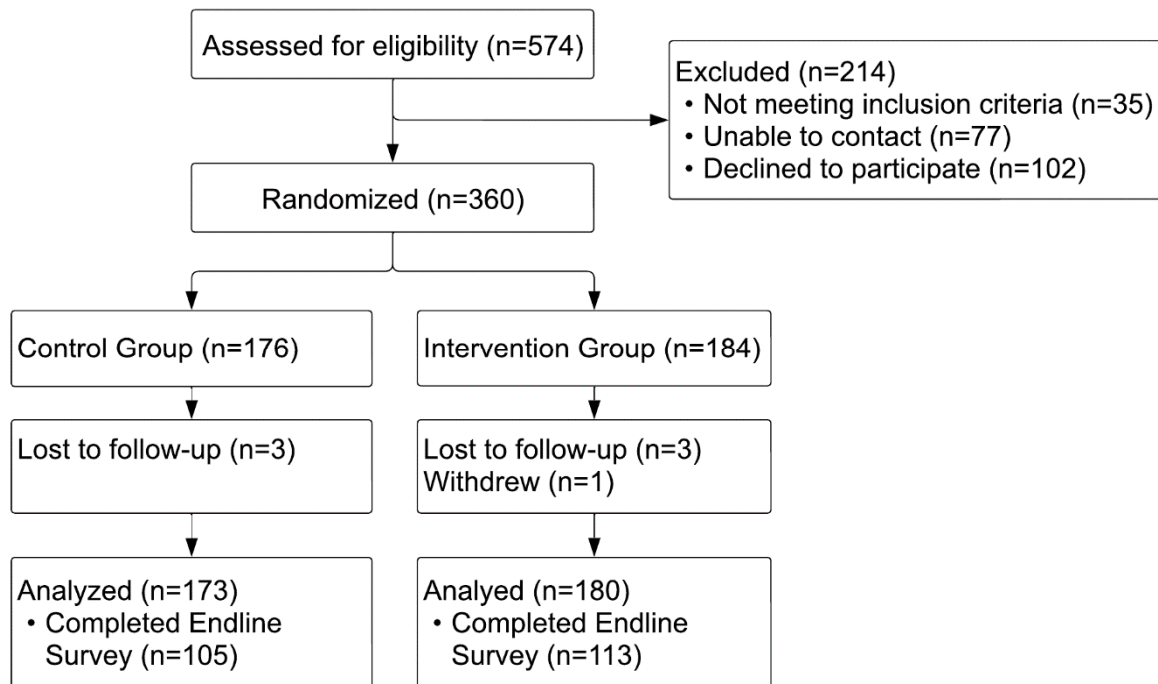


549 **FIGURES**

550

551 **Figure 1. Consort Diagram**

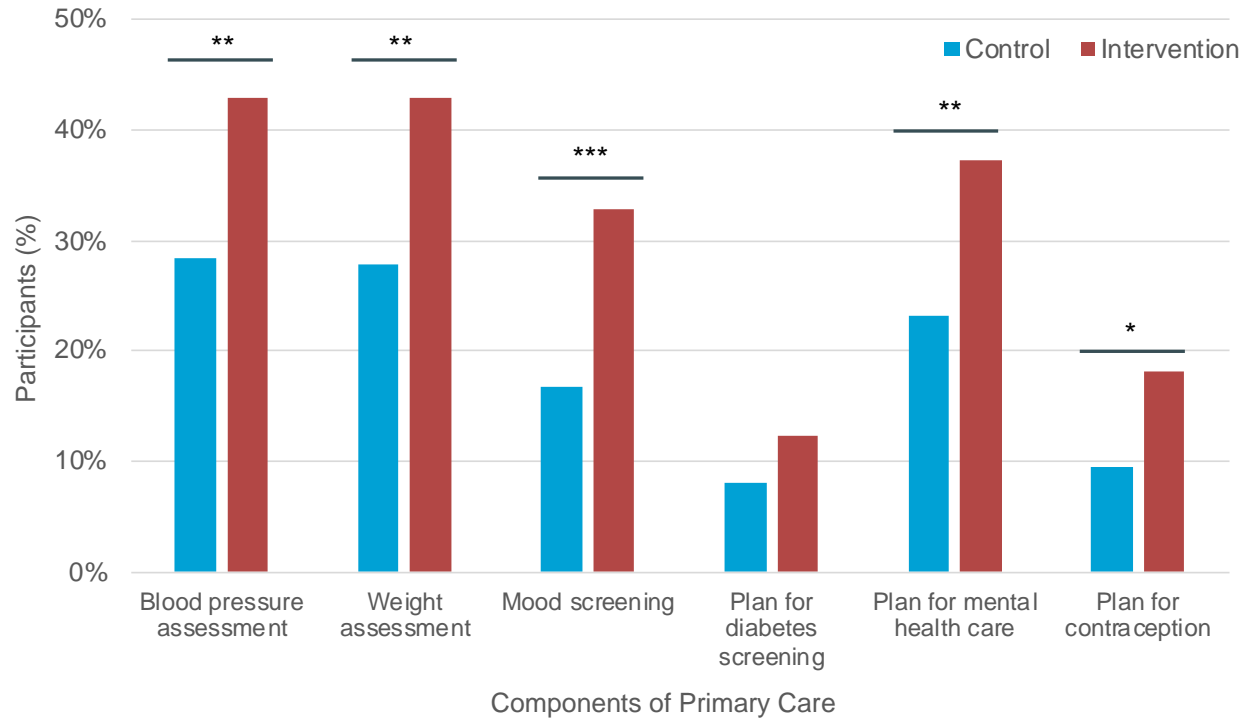
552



553

554

555 **Figure 2. Effects on Content of Care Received at any Primary Care Clinician Visit**  
556



557  
558  
559 Abbreviation: PCP, Primary Care Clinician.  
560 Levels of significance (p-value): \* <0.05, \*\* <0.001, \*\*\* <0.001.