

## Monitoring Report: GLP-1 RA Prescribing Trends - March 2024 Data

Samuel Gratzl, PhD\*

Patricia J Rodriguez, PhD, MPH\*

Brianna M Goodwin Cartwright, MS

Charlotte Baker, DrPH, MPH, CPH

Duy Do, PhD

Nicholas L Stucky, MD, PhD

\*Denotes co-first author

Affiliations: All authors are affiliated with Truveta, Inc.

Corresponding author:

Dr Nicholas Stucky

Truveta, Inc

1745 114th Ave SE, Bellevue, WA 98004

Email: [nicholass@truveta.com](mailto:nicholass@truveta.com)

## Abstract

**Background:** Limited recent data exist on prescribing patterns and patient characteristics for glucagon-like peptide 1 receptor agonists (GLP-1 RAs), an important drug class used as anti-diabetic medication (ADM) for patients with type 2 diabetes mellitus (T2D) and/or anti-obesity medication (AOM) in patients with overweight or obesity.

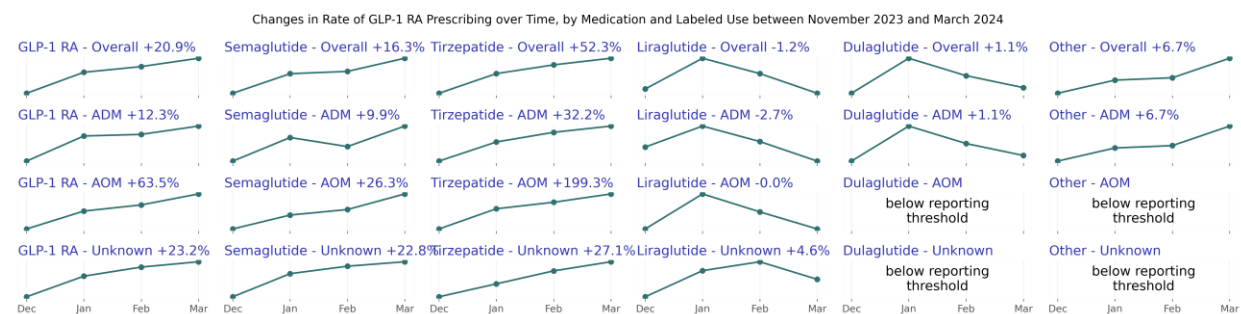
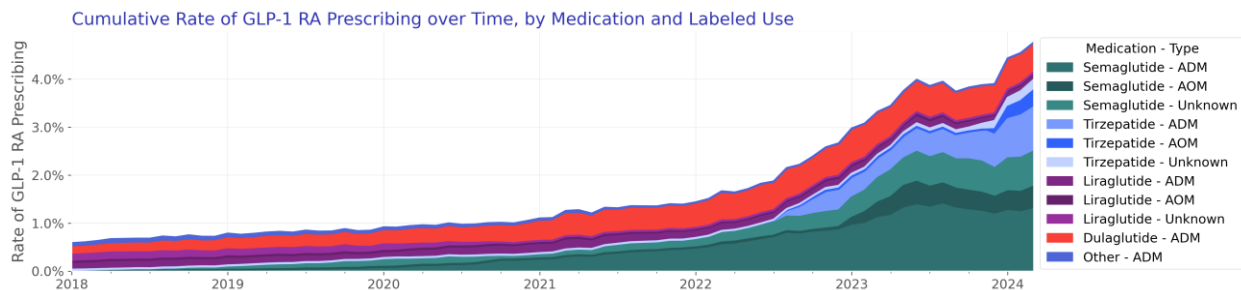
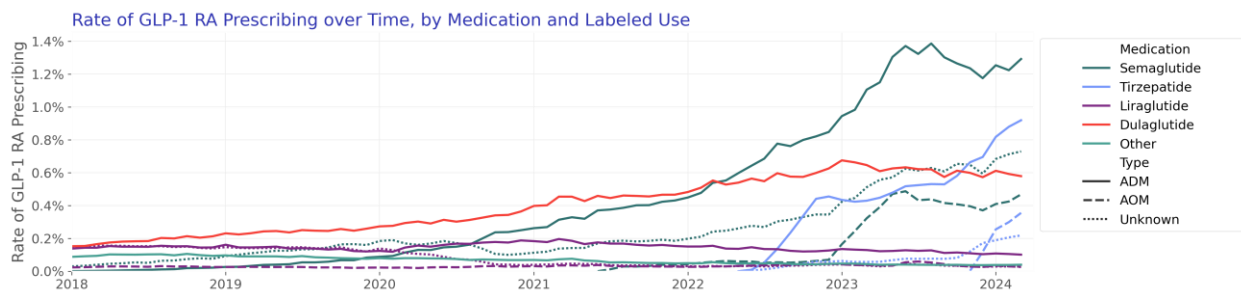
For brevity, we use the term GLP-1 RA to refer to both GLP-1 RA and dual GLP-1 RA/GIP medications.

**Objective:** To describe recent trends in prescribing and dispensing of GLP-1-based medications in the US.

**Methods:** Using a subset of real-world electronic health record (EHR) data from Truveta, a growing collective of health systems that provide more than 18% of all daily clinical care in the US, we identified patients who were prescribed a GLP-1-based medication between January 01, 2018 and March 31, 2024. We describe prescribing volumes and patient characteristics over time, by medication, and by FDA-labeled use. Among the subset of patients for whom post-prescription dispensing data are available, we describe the proportion and characteristics of patients who were and were not dispensed a GLP-1 RA following their prescription.

**Results:** 1,055,900 patients were prescribed a GLP-1 RA between January 2018 and March 2024, with 4,161,731 total prescriptions during this period. Among first-time prescriptions for which labeled use could be established, ADMs accounted for 85.0% and AOMs accounted for 15.0%. The most common first-time medication was semaglutide (n = 569,413). Among those with available data, 70.4% of first-time ADM prescriptions overall and 74.1% in December 2023 had a fill within 60 days. By comparison, 43.3% of first-time AOM prescriptions overall and 34.9% in December 2023 had a fill within 60 days.

## Trends in Prescribing

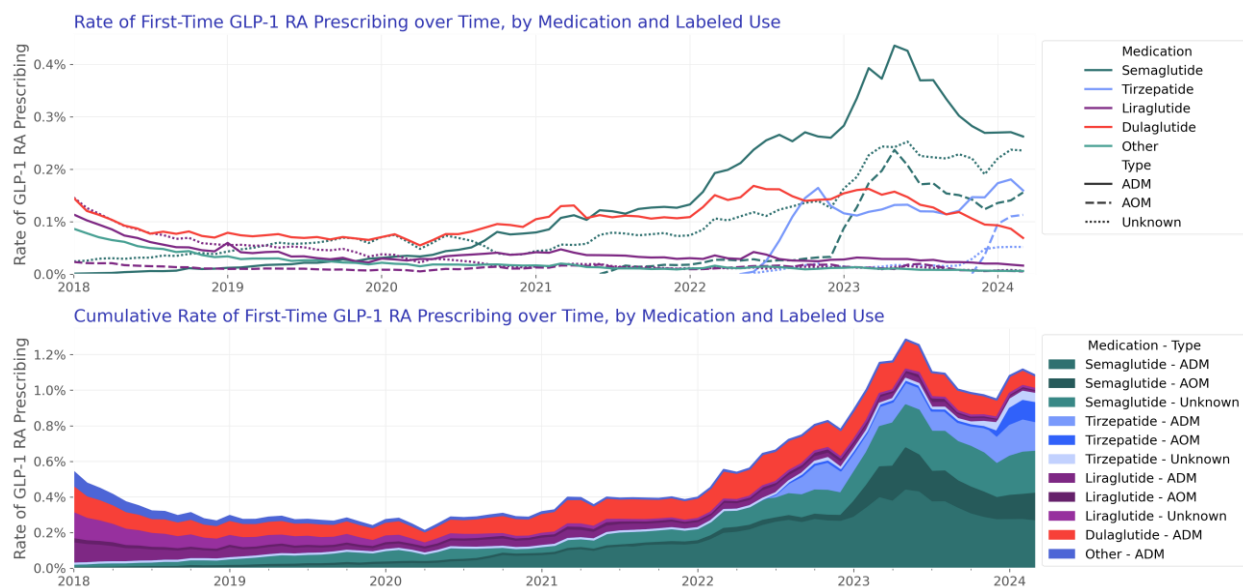


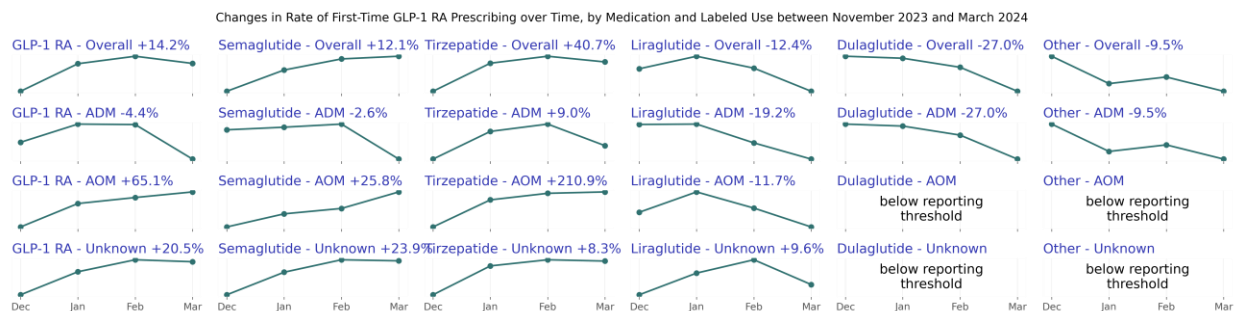
	GLP-1 RA	Semaglutide	Tirzepatide	Liraglutide	Dulaglutide	Other
<b>Overall</b>						
December 2023	3.65%	2.07%	0.94%	0.15%	0.57%	0.04%
March 2024	4.41%	2.41%	1.43%	0.15%	0.58%	0.04%
Change (percentage)	+20.93%	+16.28%	+52.34%	-1.24%	+1.09%	+6.71%
Difference (percentage points)	+0.76%	+0.34%	+0.49%	-0.00%	+0.01%	+0.00%
<b>ADM</b>						
December 2023	2.54%	1.18%	0.70%	0.10%	0.57%	0.04%
March 2024	2.85%	1.29%	0.92%	0.10%	0.58%	0.04%
Change (percentage)	+12.29%	+9.95%	+32.20%	-2.70%	+1.09%	+6.71%
Difference (percentage points)	+0.31%	+0.12%	+0.22%	-0.00%	+0.01%	+0.00%
<b>AOM</b>						
December 2023	0.50%	0.37%	0.12%	0.03%	n/a	n/a
March 2024	0.82%	0.47%	0.36%	0.03%	n/a	n/a
Change (percentage)	+63.53%	+26.30%	+199.33%	-0.02%		
Difference (percentage points)	+0.32%	+0.10%	+0.24%	-0.00%		

Unknown						
December 2023	0.79%	0.59%	0.17%	0.03%	n/a	n/a
March 2024	0.97%	0.73%	0.22%	0.03%	n/a	n/a
Change (percentage)	+23.20%	+22.79%	+27.06%	+4.57%		
Difference (percentage points)	+0.18%	+0.14%	+0.05%	+0.00%		

- Overall prescribing rates (GLP-1 RA prescriptions per total prescriptions) increased throughout the first quarter of 2024 (+20.9% increase in March 2024 compared to December 2023).
- The ADM prescribing rates increased slightly in March 2024 compared to December 2023 (+12.3%). Among ADMs, semaglutide was the most prescribed medication. ADM tirzepatide prescribing, which surpassed dulaglutide prescribing in late 2023, continued to increase, while dulaglutide prescribing was relatively flat.
- The AOM prescribing rates increased during the first quarter of 2024 (+63.5% in March 2024 compared to December 2023). Semaglutide was the most commonly prescribed AOM, followed by tirzepatide. Overall prescribing of tirzepatide, which began in December 2023, increased approximately 200% in the first quarter of 2024.

## Trends in First-Time Prescribing

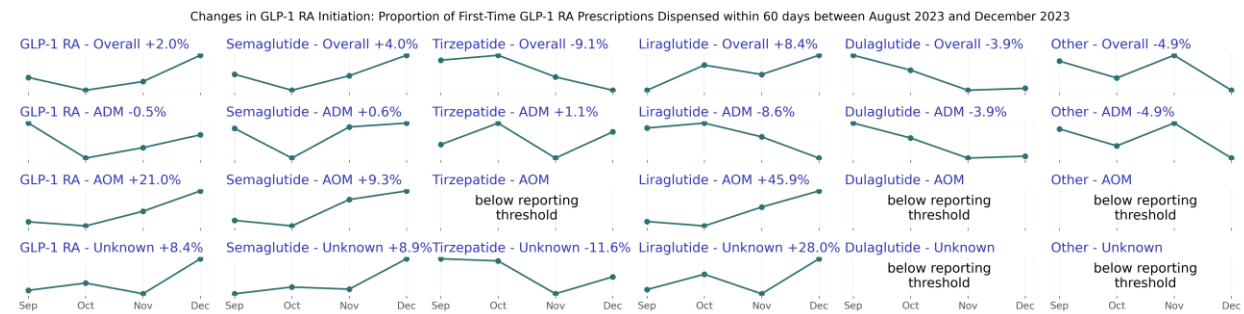
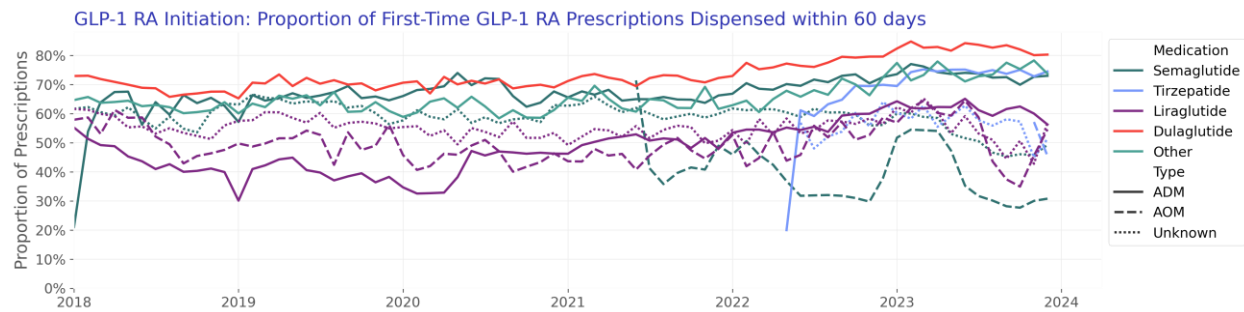




	GLP-1 RA	Semaglutide	Tirzepatide	Liraglutide	Dulaglutide	Other
<b>Overall</b>						
December 2023	0.95%	0.58%	0.23%	0.03%	0.09%	0.01%
March 2024	1.08%	0.65%	0.32%	0.03%	0.07%	0.01%
Change (percentage)	+14.16%	+12.08%	+40.66%	-12.39%	-27.01%	-9.45%
Difference (percentage points)	+0.13%	+0.07%	+0.09%	-0.00%	-0.03%	-0.00%
<b>ADM</b>						
December 2023	0.54%	0.27%	0.15%	0.02%	0.09%	0.01%
March 2024	0.51%	0.26%	0.16%	0.02%	0.07%	0.01%
Change (percentage)	-4.43%	-2.56%	+8.96%	-19.15%	-27.01%	-9.45%
Difference (percentage points)	-0.02%	-0.01%	+0.01%	-0.00%	-0.03%	-0.00%
<b>AOM</b>						
December 2023	0.17%	0.12%	0.04%	0.01%	n/a	n/a
March 2024	0.27%	0.16%	0.11%	0.01%	n/a	n/a
Change (percentage)	+65.06%	+25.83%	+210.85%	-11.66%		
Difference (percentage points)	+0.11%	+0.03%	+0.08%	-0.00%		
<b>Unknown</b>						
December 2023	0.24%	0.19%	0.05%	0.01%	n/a	n/a
March 2024	0.29%	0.24%	0.05%	0.01%	n/a	n/a
Change (percentage)	+20.46%	+23.85%	+8.33%	+9.58%		
Difference (percentage points)	+0.05%	+0.05%	+0.00%	+0.00%		

- First-time prescribing rates (first-time GLP-1 RA prescriptions per total prescriptions) increased slightly throughout the first quarter of 2024 (+14.2% increase in March 2024 compared to December 2023).
- Similar to overall prescribing, semaglutide was the most commonly first-prescribed GLP-1 RA.
- The first-time prescribing rates of ADM decreased (-4.4%) while the rates of AOM increased (+65.1%).
- First-time prescribing rates for AOM tirzepatide, which began in December 2023, contributed the biggest increase in AOM first-time prescription with +210.9% in March 2024 compared to December 2024.

## Trends in Dispensing



	GLP-1 RA	Semaglutide	Tirzepatide	Liraglutide	Dulaglutide	Other
<b>Overall</b>						
September 2023	60.03%	54.42%	71.92%	51.78%	83.52%	77.52%
December 2023	61.25%	56.58%	65.35%	56.10%	80.29%	73.72%
Change (percentage)	+2.04%	+3.96%	-9.12%	+8.36%	-3.86%	-4.91%
Difference (percentage points)	+1.22%	+2.16%	-6.56%	+4.33%	-3.23%	-3.80%
<b>ADM</b>						
September 2023	74.48%	72.55%	73.69%	61.60%	83.52%	77.52%
December 2023	74.09%	73.02%	74.51%	56.27%	80.29%	73.72%
Change (percentage)	-0.53%	+0.64%	+1.11%	-8.64%	-3.86%	-4.91%
Difference (percentage points)	-0.39%	+0.47%	+0.82%	-5.32%	-3.23%	-3.80%
<b>AOM</b>						
September 2023	28.83%	28.18%	n/a	37.42%	n/a	n/a
December 2023	34.90%	30.80%	45.46%	54.61%	n/a	n/a
Change (percentage)	+21.05%	+9.27%		+45.92%		
Difference (percentage points)	+6.07%	+2.61%		+17.19%		
<b>Unknown</b>						
September 2023	46.05%	45.28%	58.10%	44.50%	n/a	n/a
December 2023	49.89%	49.31%	51.34%	56.94%	n/a	n/a
Change (percentage)	+8.35%	+8.90%	-11.63%	+27.98%		
Difference (percentage points)	+3.85%	+4.03%	-6.76%	+12.45%		

- In December 2023, 61.25% of GLP-1 RA prescriptions had a dispense within 60 days of their prescription.

- 60-day initiation rates were higher for ADMs compared to AOMs. 74.1% in December 2023 filled a GLP-1 within 60 days, compared to 34.9% in the December 2023.
- 60-day initiation of AOMs increased by 21.1% between September and December 2023, while 60-day initiation of ADMs remained similar (<1% change) between September and December 2023.

## About this report

This report provides recent trends in the prescribing and dispensing of glucagon-like peptide-1 receptor agonist (GLP-1 RAs)-based medications, including dual GLP-1 RA/gastric inhibitory polypeptide (GIP) over time, by medication, and by FDA-labeled use. We used near real-time, aggregated electronic health record (EHR) data from a collective of US healthcare systems to describe prescribing and dispensing of GLP-1 RA medications from January 2018 to March 2024.

## Introduction

Obesity and type 2 diabetes mellitus (T2D) are interconnected epidemics with a high prevalence and individual and combined negative impacts on health (CDC, 2020, Hales, 2020). Glucagon-like peptide-1 receptor agonist (GLP-1 RAs) -based medications, including dual GLP-1 RA/gastric inhibitory polypeptide (GIP), have been shown to improve glycemic control in patients with T2D and reduce weight in patients with and without T2D (Davies, 2015, Davies, 2021, Garvey, 2023, Jastreboff, 2022, Wilding, 2023, Yeh, 2023). GLP-1 RA have also demonstrated cardiovascular benefit in patients with and without T2D (Lincoff, 2023, Ussher, 2023).

Interest in these medications has recently accelerated, largely for their weight-loss effects; however, limited empiric data exist on prescribing, dispensing, and patient characteristics. Access to and use of GLP-1 RA may be impacted by high cost, limited insurance coverage for patients without T2D and medication shortages.

## Methods

### Data

We evaluated prescribing and dispensing of GLP-1 RAs between January 2018 and March 2024 using a subset of Truveta Data. Truveta provides access to continuously updated, linked, and de-identified electronic health record (EHR) from a collective of US



health care systems that provide 18% of all daily clinical care in the US, including structured information on demographics, encounters, diagnoses, vital signs (e.g., weight, BMI, blood pressure), medication requests (prescriptions), medication administration, laboratory and diagnostic tests and results (e.g., HbA1c tests and values), and procedures. Updated EHR data are provided daily to Truveta by member health care systems. In addition to EHR data for care delivered within Truveta member health care systems, medication dispensing and social drivers of health (SDOH) information are made available through linked third-party data. Medication dispense (via e-prescribing data) includes fills for prescriptions written both within and outside Truveta member health care systems, providing greater observability into patients' medication history. Medication dispense histories are updated at the time of the encounter, and include fill dates, NDC or RxNorm codes, quantity dispensed, and days of medication supplied. SDOH data include individual-level factors, including income and education.

## Population

We identified GLP-1 RA prescriptions (medication requests) and dispenses among adults using RxNorm and NDC codes for dulaglutide, exenatide, liraglutide, lixisenatide, semaglutide, and tirzepatide. Exenatide and lixisenatide were grouped as 'other' given small relative sizes. Brands were identified when possible using RxNorm and NDC codes. Brands labeled for treatment of T2D were classified as ADMs and brands labeled for treatment of overweight and obesity were classified as AOMs. When brand could not be established, the labeled use was classified as unknown.

## Prescribing Analysis

Characteristics of patients ever prescribed a GLP-1 RA were summarized, including demographics, social drivers of health (SDOH), and presence of T2D and/or overweight or obesity. Characteristics are provided by medication and by year of first prescription.

Overall and first-time prescribing rates of GLP-1 RA were summarized over time by medication and labeled use. The prescribing rate was calculated monthly as the number of patients with a GLP-1 RA prescription divided by the number of patients with any prescription in the month. Absolute differences and percentage changes in the rate of GLP-1 RA prescribing over the most recent 3-month period were summarized overall and by medication and labeled use.

## Dispensing Analysis

We describe the proportion of GLP-1 RA prescriptions (overall and first-time) with a dispense occurring within 60 days. Dispensing analyses were restricted to



prescriptions for which complete 60-day dispensing outcomes could be observed. Dispensing outcomes were considered observable if (1) a dispense was recorded in the 60 days following the prescription, and/or (2) an encounter took place after the 60-day period ended (at which time any dispenses would be observed). To allow sufficient follow-up, we report dispensing with a 90-day delay. Given shortages and expected substitutions at the pharmacy, we considered the dispense of any GLP-1 RA, which could differ from the prescribed GLP-1 RA.

We plot the proportion of prescriptions (overall and first-time) dispensed within 60 days over time, by medication and use. Differences in dispensing were expected between ADMs and AOMs given ADMs are typically covered by insurance, whereas insurance coverage for AOMs is limited. As such, we provide dispensing rates stratified by FDA labeled use. Further, we stratify dispensing by age 65+ vs. 18-64 as a proxy for Medicare coverage. Medicare never provides coverage for AOMs, whereas commercial insurers may.

## Results

### Overall population

The demographics of patients by first-prescribed medication are as follows:

*Table 1: Patient Characteristics by First-Prescribed GLP-1 RA Medication.*

	Semaglutide	Tirzepatide	Liraglutide	Dulaglutide	Other	Overall	
N	569,413 (100.00%)	105,976 (100.00%)	142,721 (100.00%)	201,428 (100.00%)	36,362 (100.00%)	1,055,900 (100.00%)	
Age Group							
18-44	142,843 (25.09%)	33,251 (31.38%)	32,859 (23.02%)	27,366 (13.59%)	4,204 (11.56%)	240,523 (22.78%)	
45-64	285,429 (50.13%)	55,694 (52.55%)	69,814 (48.92%)	102,425 (50.85%)	18,086 (49.74%)	531,448 (50.33%)	
65+	141,141 (24.79%)	17,031 (16.07%)	40,048 (28.06%)	71,637 (35.56%)	14,072 (38.70%)	283,929 (26.89%)	
Sex							
Female	365,646 (64.21%)	73,009 (68.89%)	89,743 (62.88%)	108,269 (53.75%)	19,243 (52.92%)	655,910 (62.12%)	
Male	203,744 (35.78%)	32,961 (31.10%)	52,976 (37.12%)	93,157 (46.25%)	17,117 (47.07%)	399,955 (37.88%)	
Other	23 (0.00%)	6 (0.01%)	2 (0.00%)	2 (0.00%)	2 (0.01%)	35 (0.00%)	
Race							
White		413,491 (72.62%)	77,625 (73.25%)	105,882 (74.19%)	140,243 (69.62%)	27,211 (74.83%)	764,452 (72.40%)

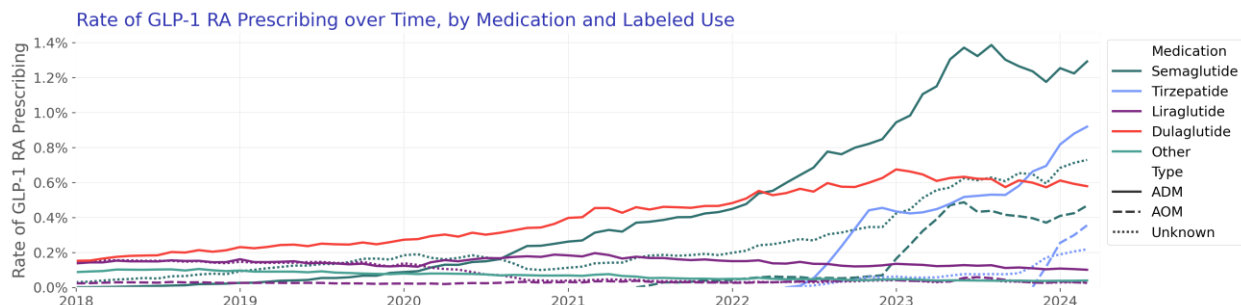
Black or African American	71,851 (12.62%)	11,716 (11.06%)	18,274 (12.80%)	26,969 (13.39%)	4,245 (11.67%)	133,055 (12.60%)
Asian	13,763 (2.42%)	1,906 (1.80%)	2,526 (1.77%)	4,988 (2.48%)	771 (2.12%)	23,954 (2.27%)
Unknown	29,943 (5.26%)	7,354 (6.94%)	6,690 (4.69%)	12,623 (6.27%)	1,805 (4.96%)	58,415 (5.53%)
Native Hawaiian or Other Pacific Islander	1,792 (0.31%)	200 (0.19%)	499 (0.35%)	690 (0.34%)	130 (0.36%)	3,311 (0.31%)
American Indian or Alaska Native	3,835 (0.67%)	570 (0.54%)	1,265 (0.89%)	1,202 (0.60%)	324 (0.89%)	7,196 (0.68%)
Other Race	28,148 (4.94%)	5,328 (5.03%)	6,479 (4.54%)	12,476 (6.19%)	1,557 (4.28%)	53,988 (5.11%)
Declined to answer	6,590 (1.16%)	1,277 (1.20%)	1,106 (0.77%)	2,237 (1.11%)	319 (0.88%)	11,529 (1.09%)
<b>Ethnicity</b>						
Hispanic or Latino	67,961 (11.94%)	13,051 (12.32%)	15,197 (10.65%)	24,875 (12.35%)	3,790 (10.42%)	124,874 (11.83%)
Not Hispanic or Latino	461,741 (81.09%)	85,172 (80.37%)	117,716 (82.48%)	159,735 (79.30%)	29,747 (81.81%)	854,111 (80.89%)
Unknown	32,377 (5.69%)	6,205 (5.86%)	8,546 (5.99%)	14,317 (7.11%)	2,487 (6.84%)	63,932 (6.05%)
Declined to answer	7,334 (1.29%)	1,548 (1.46%)	1,262 (0.88%)	2,501 (1.24%)	338 (0.93%)	12,983 (1.23%)
<b>Characteristics</b>						
Type II Diabetes	278,611 (48.93%)	42,309 (39.92%)	86,250 (60.43%)	141,219 (70.11%)	27,925 (76.80%)	576,314 (54.58%)
Overweight or Obesity	374,231 (65.72%)	72,862 (68.75%)	86,714 (60.76%)	97,515 (48.41%)	17,488 (48.09%)	648,810 (61.45%)
<b>Labeled Use</b>						
ADM	285,646 (50.16%)	81,270 (76.69%)	66,974 (46.93%)	201,428 (100.00%)	36,362 (100.00%)	671,680 (63.61%)
AOM	85,104 (14.95%)	10,573 (9.98%)	22,796 (15.97%)	n/a	n/a	118,473 (11.22%)
Unknown	198,663 (34.89%)	14,133 (13.34%)	52,951 (37.10%)	n/a	n/a	265,747 (25.17%)
<b>Year</b>						
2018	8,722 (1.53%)	n/a	40,154 (28.13%)	21,292 (10.57%)	12,657 (34.81%)	82,825 (7.84%)
2019	20,086 (3.53%)	n/a	24,178 (16.94%)	18,263 (9.07%)	6,759 (18.59%)	69,286 (6.56%)
2020	28,385 (4.98%)	n/a	17,833 (12.50%)	20,458 (10.16%)	4,759 (13.09%)	71,435 (6.77%)
2021	55,560 (9.76%)	n/a	19,356 (13.56%)	33,209 (16.49%)	3,893 (10.71%)	112,018 (10.61%)
2022	126,539 (22.22%)	21,576 (20.36%)	19,698 (13.80%)	50,024 (24.83%)	4,185 (11.51%)	222,022 (21.03%)
2023	272,749 (47.90%)	55,001 (51.90%)	18,677 (13.09%)	50,739 (25.19%)	3,559 (9.79%)	400,725 (37.95%)
2024	57,372 (10.08%)	29,399 (27.74%)	2,825 (1.98%)	7,443 (3.70%)	550 (1.51%)	97,589 (9.24%)

Comorbidity						
Asthma	75,793 (13.31%)	14,290 (13.48%)	19,447 (13.63%)	22,171 (11.01%)	4,107 (11.29%)	135,808 (12.86%)
CKD	75,426 (13.25%)	9,424 (8.89%)	26,323 (18.44%)	37,018 (18.38%)	7,070 (19.44%)	155,261 (14.70%)
COPD	27,082 (4.76%)	3,734 (3.52%)	9,974 (6.99%)	14,012 (6.96%)	2,775 (7.63%)	57,577 (5.45%)
Hyperlipidemia	306,055 (53.75%)	51,250 (48.36%)	77,828 (54.53%)	109,511 (54.37%)	21,991 (60.48%)	566,635 (53.66%)
Hypertension	314,189 (55.18%)	52,289 (49.34%)	84,442 (59.17%)	118,115 (58.64%)	23,442 (64.47%)	592,477 (56.11%)
Major Depression	78,798 (13.84%)	13,917 (13.13%)	21,415 (15.00%)	20,954 (10.40%)	4,082 (11.23%)	139,166 (13.18%)
College Past Present						
Attended but not currently	237,519 (41.71%)	51,617 (48.71%)	51,630 (36.18%)	55,803 (27.70%)	9,166 (25.21%)	405,735 (38.43%)
Currently attending	8,222 (1.44%)	1,983 (1.87%)	1,582 (1.11%)	1,122 (0.56%)	200 (0.55%)	13,109 (1.24%)
No college on record	256,047 (44.97%)	36,311 (34.26%)	76,559 (53.64%)	119,134 (59.14%)	22,724 (62.49%)	510,775 (48.37%)
Unknown	67,625 (11.88%)	16,065 (15.16%)	12,950 (9.07%)	25,369 (12.59%)	4,272 (11.75%)	126,281 (11.96%)
Estimated Individual Income						
0 - 25,000	13,917 (2.44%)	2,321 (2.19%)	5,254 (3.68%)	6,492 (3.22%)	1,057 (2.91%)	29,041 (2.75%)
25,001 - 30,000	21,950 (3.85%)	3,481 (3.28%)	7,661 (5.37%)	9,866 (4.90%)	1,578 (4.34%)	44,536 (4.22%)
30,001 - 35,000	33,643 (5.91%)	5,207 (4.91%)	11,672 (8.18%)	15,500 (7.70%)	2,802 (7.71%)	68,824 (6.52%)
35,001 - 40,000	46,163 (8.11%)	7,229 (6.82%)	15,052 (10.55%)	20,188 (10.02%)	3,863 (10.62%)	92,495 (8.76%)
40,001 - 50,000	104,984 (18.44%)	17,667 (16.67%)	30,308 (21.24%)	40,392 (20.05%)	7,658 (21.06%)	201,009 (19.04%)
50,001 - 60,000	89,998 (15.81%)	16,081 (15.17%)	22,337 (15.65%)	30,419 (15.10%)	5,797 (15.94%)	164,632 (15.59%)
60,001 - 80,000	105,847 (18.59%)	20,022 (18.89%)	23,052 (16.15%)	31,819 (15.80%)	5,822 (16.01%)	186,562 (17.67%)
80,001 - 100,000	47,092 (8.27%)	9,522 (8.99%)	8,445 (5.92%)	12,778 (6.34%)	2,146 (5.90%)	79,983 (7.57%)
100,001 - 120,000	22,269 (3.91%)	4,650 (4.39%)	3,706 (2.60%)	5,404 (2.68%)	910 (2.50%)	36,939 (3.50%)
120,001 - 150,000	12,920 (2.27%)	2,954 (2.79%)	1,900 (1.33%)	2,673 (1.33%)	381 (1.05%)	20,828 (1.97%)
More than 150K	3,020 (0.53%)	780 (0.74%)	388 (0.27%)	535 (0.27%)	77 (0.21%)	4,800 (0.45%)
Unknown	67,610 (11.87%)	16,062 (15.16%)	12,946 (9.07%)	25,362 (12.59%)	4,271 (11.75%)	126,251 (11.96%)

## Prescribing over time

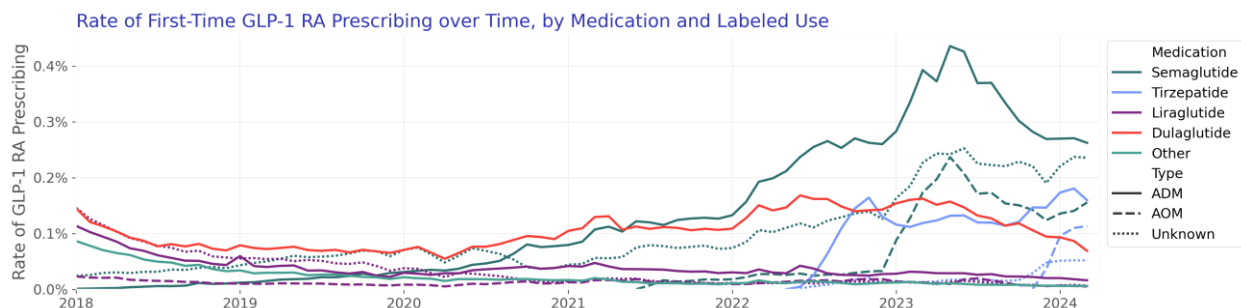
### Overall

We describe the monthly rate of prescriptions by medication and FDA labeled use over time:



### First-time

We describe the monthly rate of first-time prescriptions by medication and FDA labeled use over time.



Characteristics of patients by year of first GLP-1 RA use are as follows:

Table 2: Patient Characteristics by Year of First GLP-1 RA Prescription.

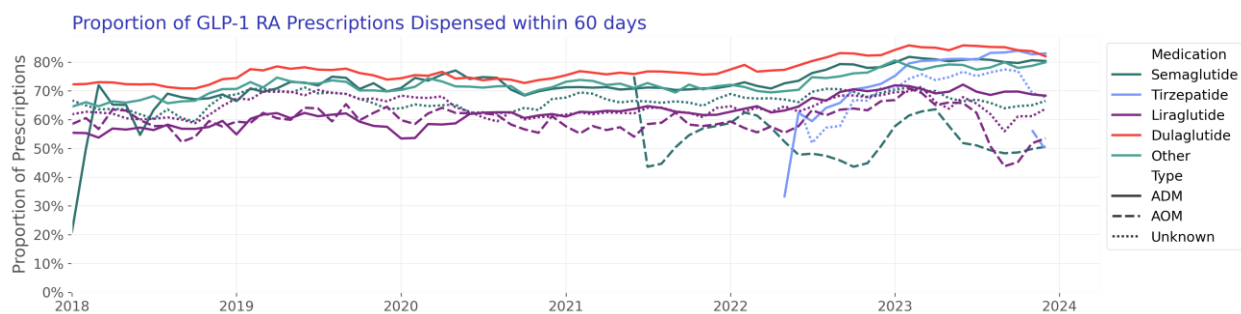
	2018	2019	2020	2021	2022	2023
N	82,825 (100.00%)	69,286 (100.00%)	71,435 (100.00%)	112,018 (100.00%)	222,022 (100.00%)	400,725 (100.00%)
Age Group						
18-44	12,133 (14.65%)	11,306 (16.32%)	12,262 (17.17%)	21,522 (19.21%)	52,578 (23.68%)	104,638 (26.11%)
45-64	45,776 (55.27%)	36,372 (52.50%)	36,875 (51.62%)	56,370 (50.32%)	110,698 (49.86%)	198,049 (49.42%)
65+	24,916 (30.08%)	21,608 (31.19%)	22,298 (31.21%)	34,126 (30.46%)	58,746 (26.46%)	98,038 (24.47%)
Sex						
Female	45,741 (55.23%)	38,028 (54.89%)	39,176 (54.84%)	65,107 (58.12%)	140,044 (63.08%)	264,166 (65.92%)
Male	37,083 (44.77%)	31,256 (45.11%)	32,259 (45.16%)	46,909 (41.88%)	81,972 (36.92%)	136,541 (34.07%)
Other	1 (0.00%)	2 (0.00%)	n/a	2 (0.00%)	6 (0.00%)	18 (0.00%)

Race						
White	64,153 (77.46%)	52,601 (75.92%)	53,138 (74.39%)	82,529 (73.67%)	161,593 (72.78%)	283,744 (70.81%)
Black or African American	9,979 (12.05%)	8,006 (11.56%)	8,552 (11.97%)	13,367 (11.93%)	27,904 (12.57%)	53,315 (13.30%)
Asian	1,493 (1.80%)	1,514 (2.19%)	1,788 (2.50%)	3,215 (2.87%)	5,323 (2.40%)	8,611 (2.15%)
Unknown	3,352 (4.05%)	3,054 (4.41%)	3,055 (4.28%)	4,497 (4.01%)	9,847 (4.44%)	24,795 (6.19%)
Native Hawaiian or Other Pacific Islander	220 (0.27%)	229 (0.33%)	277 (0.39%)	439 (0.39%)	756 (0.34%)	1,117 (0.28%)
American Indian or Alaska Native	568 (0.69%)	533 (0.77%)	520 (0.73%)	932 (0.83%)	1,609 (0.72%)	2,465 (0.62%)
Other Race	2,546 (3.07%)	2,862 (4.13%)	3,475 (4.86%)	5,866 (5.24%)	12,353 (5.56%)	21,747 (5.43%)
Declined to answer	514 (0.62%)	487 (0.70%)	630 (0.88%)	1,173 (1.05%)	2,637 (1.19%)	4,931 (1.23%)
Ethnicity						
Hispanic or Latino	7,389 (8.92%)	7,167 (10.34%)	8,213 (11.50%)	13,739 (12.26%)	28,532 (12.85%)	47,993 (11.98%)
Not Hispanic or Latino	69,936 (84.44%)	57,389 (82.83%)	58,529 (81.93%)	90,967 (81.21%)	177,235 (79.83%)	321,602 (80.26%)
Unknown	4,915 (5.93%)	4,189 (6.05%)	4,075 (5.70%)	6,170 (5.51%)	13,538 (6.10%)	25,327 (6.32%)
Declined to answer	585 (0.71%)	541 (0.78%)	618 (0.87%)	1,142 (1.02%)	2,717 (1.22%)	5,803 (1.45%)
Characteristics						
Type II Diabetes	68,540 (82.75%)	53,370 (77.03%)	52,215 (73.09%)	71,980 (64.26%)	112,983 (50.89%)	175,849 (43.88%)
Overweight or Obesity	52,300 (63.15%)	39,541 (57.07%)	38,573 (54.00%)	63,025 (56.26%)	131,022 (59.01%)	256,407 (63.99%)
Medication						
Semaglutide	8,722 (10.53%)	20,086 (28.99%)	28,385 (39.74%)	55,560 (49.60%)	126,539 (56.99%)	272,749 (68.06%)
Tirzepatide	n/a	n/a	n/a	n/a	21,576 (9.72%)	55,001 (13.73%)
Liraglutide	40,154 (48.48%)	24,178 (34.90%)	17,833 (24.96%)	19,356 (17.28%)	19,698 (8.87%)	18,677 (4.66%)
Dulaglutide	21,292 (25.71%)	18,263 (26.36%)	20,458 (28.64%)	33,209 (29.65%)	50,024 (22.53%)	50,739 (12.66%)
Other	12,657 (15.28%)	6,759 (9.76%)	4,759 (6.66%)	3,893 (3.48%)	4,185 (1.88%)	3,559 (0.89%)
Labeled Use						
ADM	51,275 (61.91%)	39,457 (56.95%)	47,432 (66.40%)	81,505 (72.76%)	161,874 (72.91%)	241,273 (60.21%)
AOM	3,744 (4.52%)	2,423 (3.50%)	2,564 (3.59%)	6,245 (5.57%)	14,228 (6.41%)	66,438 (16.58%)
Unknown	27,806 (33.57%)	27,406 (39.55%)	21,439 (30.01%)	24,268 (21.66%)	45,920 (20.68%)	93,014 (23.21%)
Comorbidity						
Asthma	10,618 (12.82%)	8,592 (12.40%)	8,581 (12.01%)	13,738 (12.26%)	27,161 (12.23%)	53,358 (13.32%)
CKD	16,980 (20.50%)	13,579 (19.60%)	14,329 (20.06%)	20,969 (18.72%)	31,305 (14.10%)	46,855 (11.69%)
COPD	6,131 (7.40%)	5,067 (7.31%)	4,993 (6.99%)	6,810 (6.08%)	10,910 (4.91%)	18,953 (4.73%)

Hyperlipidemia	58,304 (70.39%)	43,747 (63.14%)	42,401 (59.36%)	61,784 (55.16%)	110,690 (49.86%)	198,210 (49.46%)
Hypertension	59,584 (71.94%)	46,351 (66.90%)	44,966 (62.95%)	65,621 (58.58%)	116,455 (52.45%)	206,726 (51.59%)
Major Depression	11,943 (14.42%)	9,622 (13.89%)	9,355 (13.10%)	15,316 (13.67%)	28,353 (12.77%)	51,345 (12.81%)
College Past Present						
Attended but not currently	24,863 (30.02%)	22,175 (32.01%)	23,895 (33.45%)	40,934 (36.54%)	87,520 (39.42%)	164,207 (40.98%)
Currently attending	694 (0.84%)	551 (0.80%)	708 (0.99%)	1,243 (1.11%)	2,914 (1.31%)	5,552 (1.39%)
No college on record	50,352 (60.79%)	41,299 (59.61%)	42,223 (59.11%)	63,135 (56.36%)	104,716 (47.16%)	168,043 (41.93%)
Unknown	6,916 (8.35%)	5,261 (7.59%)	4,609 (6.45%)	6,706 (5.99%)	26,872 (12.10%)	62,923 (15.70%)
Estimated Individual Income						
0 - 25,000	1,843 (2.23%)	1,789 (2.58%)	2,065 (2.89%)	3,316 (2.96%)	6,165 (2.78%)	11,125 (2.78%)
25,001 - 30,000	3,245 (3.92%)	3,025 (4.37%)	3,245 (4.54%)	5,230 (4.67%)	9,358 (4.21%)	16,355 (4.08%)
30,001 - 35,000	6,048 (7.30%)	5,299 (7.65%)	5,438 (7.61%)	8,152 (7.28%)	14,538 (6.55%)	23,704 (5.92%)
35,001 - 40,000	8,343 (10.07%)	7,285 (10.51%)	7,325 (10.25%)	11,174 (9.98%)	19,296 (8.69%)	31,501 (7.86%)
40,001 - 50,000	18,051 (21.79%)	15,346 (22.15%)	15,682 (21.95%)	23,909 (21.34%)	42,087 (18.96%)	69,185 (17.26%)
50,001 - 60,000	14,380 (17.36%)	11,722 (16.92%)	12,212 (17.10%)	18,711 (16.70%)	34,249 (15.43%)	58,820 (14.68%)
60,001 - 80,000	15,134 (18.27%)	12,089 (17.45%)	12,560 (17.58%)	20,145 (17.98%)	38,959 (17.55%)	69,908 (17.45%)
80,001 - 100,000	5,394 (6.51%)	4,454 (6.43%)	4,841 (6.78%)	8,420 (7.52%)	17,044 (7.68%)	31,409 (7.84%)
100,001 - 120,000	2,210 (2.67%)	1,874 (2.70%)	2,102 (2.94%)	3,714 (3.32%)	7,957 (3.58%)	14,915 (3.72%)
120,001 - 150,000	1,065 (1.29%)	961 (1.39%)	1,121 (1.57%)	2,063 (1.84%)	4,489 (2.02%)	8,778 (2.19%)
More than 150K	198 (0.24%)	183 (0.26%)	235 (0.33%)	479 (0.43%)	1,010 (0.45%)	2,121 (0.53%)
Unknown	6,914 (8.35%)	5,259 (7.59%)	4,609 (6.45%)	6,705 (5.99%)	26,870 (12.10%)	62,904 (15.70%)

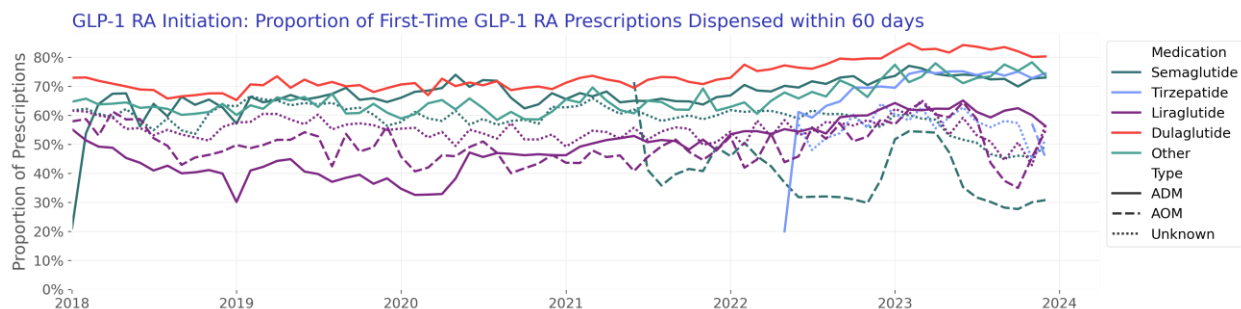
## 60-day dispensing over time

We describe the proportion of patients with any GLP-1 RA prescriptions (first-time and repeat) in a given month who filled any GLP-1 RA in the 60 days following their prescription.



## 60-day initiation over time

We describe the proportion of patients first-prescribed a GLP-1 RA who filled any GLP-1 RA in the subsequent 60 days over time.



Patient characteristics are given in Table 3:

*Table 3: Patient Characteristics by Dispense Status. Dispense status refers to presence of any GLP-1 RA dispense within 60 days of first GLP-1 RA prescription. Table contains the subset of patients with observable 60-day dispense outcomes.*

	Dispensed in 60 Days	Not Dispensed in 60 Days	Overall
N	627,605 (100.00%)	351,027 (100.00%)	978,632 (100.00%)
Age Group			
18-44	127,269 (20.28%)	91,348 (26.02%)	218,617 (22.34%)
45-64	325,457 (51.86%)	169,720 (48.35%)	495,177 (50.60%)
65+	174,879 (27.86%)	89,959 (25.63%)	264,838 (27.06%)
Sex			
Female	380,898 (60.69%)	225,250 (64.17%)	606,148 (61.94%)
Male	246,684 (39.31%)	125,769 (35.83%)	372,453 (38.06%)
Other	23 (0.00%)	8 (0.00%)	31 (0.00%)
Race			
White	453,740 (72.30%)	257,759 (73.43%)	711,499 (72.70%)
Black or African American	77,055 (12.28%)	45,640 (13.00%)	122,695 (12.54%)
Asian	15,284 (2.44%)	7,384 (2.10%)	22,668 (2.32%)
Unknown	34,199 (5.45%)	16,629 (4.74%)	50,828 (5.19%)
Native Hawaiian or Other Pacific Islander	2,045 (0.33%)	1,067 (0.30%)	3,112 (0.32%)
American Indian or Alaska Native	4,351 (0.69%)	2,381 (0.68%)	6,732 (0.69%)
Other Race	33,714 (5.37%)	16,635 (4.74%)	50,349 (5.14%)
Declined to answer	7,217 (1.15%)	3,532 (1.01%)	10,749 (1.10%)

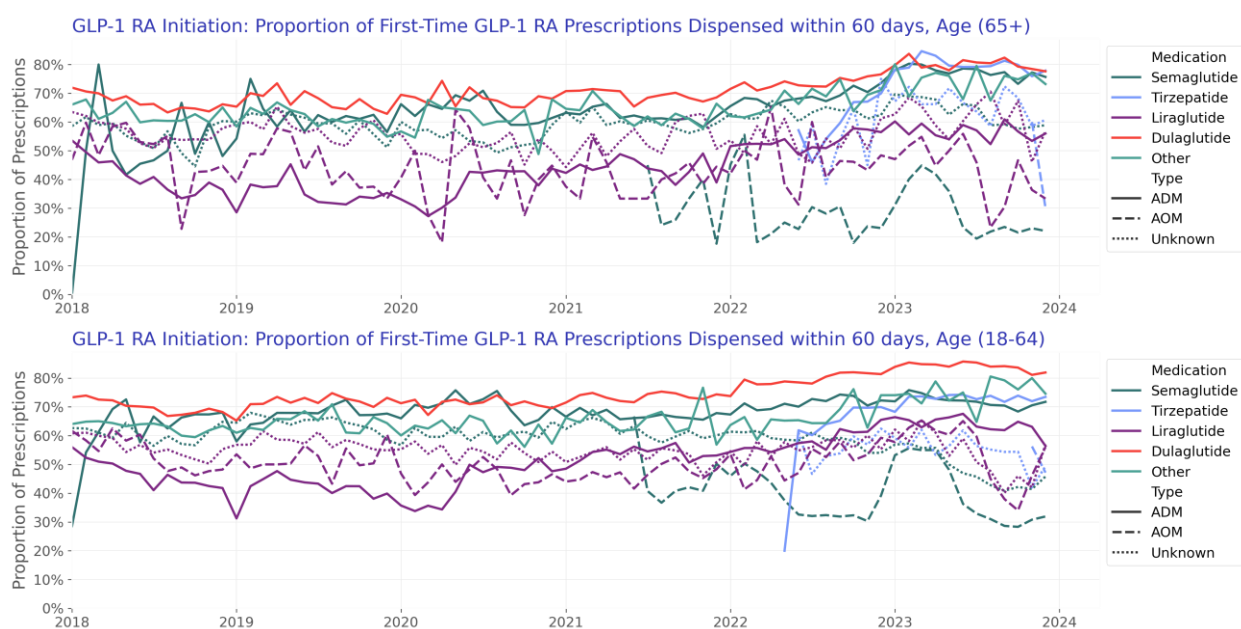


Ethnicity			
Hispanic or Latino	73,256 (11.67%)	43,311 (12.34%)	116,567 (11.91%)
Not Hispanic or Latino	507,715 (80.90%)	284,946 (81.17%)	792,661 (81.00%)
Unknown	38,497 (6.13%)	18,959 (5.40%)	57,456 (5.87%)
Declined to answer	8,137 (1.30%)	3,811 (1.09%)	11,948 (1.22%)
Characteristics			
Type II Diabetes	380,064 (60.56%)	167,902 (47.83%)	547,966 (55.99%)
Overweight or Obesity	369,229 (58.83%)	238,531 (67.95%)	607,760 (62.10%)
Medication			
Semaglutide	325,245 (51.82%)	199,674 (56.88%)	524,919 (53.64%)
Tirzepatide	64,017 (10.20%)	27,349 (7.79%)	91,366 (9.34%)
Liraglutide	71,301 (11.36%)	65,454 (18.65%)	136,755 (13.97%)
Dulaglutide	144,407 (23.01%)	46,259 (13.18%)	190,666 (19.48%)
Other	22,635 (3.61%)	12,291 (3.50%)	34,926 (3.57%)
Labeled Use			
ADM	444,093 (70.76%)	186,802 (53.22%)	630,895 (64.47%)
AOM	44,544 (7.10%)	58,429 (16.65%)	102,973 (10.52%)
Unknown	138,968 (22.14%)	105,796 (30.14%)	244,764 (25.01%)
Year			
2018	48,501 (7.73%)	33,294 (9.48%)	81,795 (8.36%)
2019	41,129 (6.55%)	26,789 (7.63%)	67,918 (6.94%)
2020	42,470 (6.77%)	27,346 (7.79%)	69,816 (7.13%)
2021	69,457 (11.07%)	40,032 (11.40%)	109,489 (11.19%)
2022	143,242 (22.82%)	70,768 (20.16%)	214,010 (21.87%)
2023	243,108 (38.74%)	134,769 (38.39%)	377,877 (38.61%)
2024	39,698 (6.33%)	18,029 (5.14%)	57,727 (5.90%)
Comorbidity			
Asthma	80,725 (12.86%)	47,007 (13.39%)	127,732 (13.05%)
CKD	96,212 (15.33%)	52,596 (14.98%)	148,808 (15.21%)
COPD	35,594 (5.67%)	18,911 (5.39%)	54,505 (5.57%)
Hyperlipidemia	343,068 (54.66%)	191,986 (54.69%)	535,054 (54.67%)
Hypertension	354,393 (56.47%)	201,783 (57.48%)	556,176 (56.83%)
Major Depression	79,990 (12.75%)	52,501 (14.96%)	132,491 (13.54%)
College Past Present			
Attended but not currently	228,591 (36.42%)	144,724 (41.23%)	373,315 (38.15%)
Currently attending	6,521 (1.04%)	5,415 (1.54%)	11,936 (1.22%)
No college on record	315,129 (50.21%)	164,264 (46.80%)	479,393 (48.99%)
Unknown	77,364 (12.33%)	36,624 (10.43%)	113,988 (11.65%)
Estimated Individual Income			
0 - 25,000	16,568 (2.64%)	10,152 (2.89%)	26,720 (2.73%)
25,001 - 30,000	25,689 (4.09%)	15,541 (4.43%)	41,230 (4.21%)
30,001 - 35,000	40,900 (6.52%)	23,157 (6.60%)	64,057 (6.55%)
35,001 - 40,000	55,057 (8.77%)	31,282 (8.91%)	86,339 (8.82%)

40,001 - 50,000	120,466 (19.19%)	67,386 (19.20%)	187,852 (19.20%)
50,001 - 60,000	97,627 (15.56%)	55,897 (15.92%)	153,524 (15.69%)
60,001 - 80,000	110,249 (17.57%)	63,161 (17.99%)	173,410 (17.72%)
80,001 - 100,000	47,370 (7.55%)	26,625 (7.58%)	73,995 (7.56%)
100,001 - 120,000	21,496 (3.43%)	12,489 (3.56%)	33,985 (3.47%)
120,001 - 150,000	12,092 (1.93%)	7,085 (2.02%)	19,177 (1.96%)
More than 150K	2,743 (0.44%)	1,639 (0.47%)	4,382 (0.45%)
Unknown	77,348 (12.32%)	36,613 (10.43%)	113,961 (11.64%)

## By Age

As a proxy for Medicare insurance, we segment initiation rate by populations 65+ versus 18-64.



Patient characteristics for patients aged 65+ are given in Table 4:

*Table 4: Patient Characteristics by Dispense Status, Age 65+. Dispense status refers to presence of any GLP-1 RA dispense within 60 days of first GLP-1 RA prescription. Table contains the subset of patients with observable 60-day dispense outcomes.*

	Dispensed in 60 Days	Not Dispensed in 60 Days	Overall
N	174,879 (100.00%)	89,959 (100.00%)	264,838 (100.00%)
<b>Age Group</b>			
65+	174,879 (100.00%)	89,959 (100.00%)	264,838 (100.00%)
<b>Sex</b>			
Female	95,492 (54.60%)	47,983 (53.34%)	143,475 (54.17%)
Male	79,387 (45.40%)	41,975 (46.66%)	121,362 (45.82%)

Other	n/a	1 (0.00%)	1 (0.00%)
Race			
White	137,666 (78.72%)	72,246 (80.31%)	209,912 (79.26%)
Black or African American	14,476 (8.28%)	7,935 (8.82%)	22,411 (8.46%)
Asian	3,742 (2.14%)	1,693 (1.88%)	5,435 (2.05%)
Unknown	9,145 (5.23%)	4,180 (4.65%)	13,325 (5.03%)
Native Hawaiian or Other Pacific Islander	293 (0.17%)	128 (0.14%)	421 (0.16%)
American Indian or Alaska Native	948 (0.54%)	414 (0.46%)	1,362 (0.51%)
Other Race	6,915 (3.95%)	2,721 (3.02%)	9,636 (3.64%)
Declined to answer	1,694 (0.97%)	642 (0.71%)	2,336 (0.88%)
Ethnicity			
Hispanic or Latino	13,114 (7.50%)	6,593 (7.33%)	19,707 (7.44%)
Not Hispanic or Latino	148,213 (84.75%)	76,975 (85.57%)	225,188 (85.03%)
Unknown	11,188 (6.40%)	5,383 (5.98%)	16,571 (6.26%)
Declined to answer	2,364 (1.35%)	1,008 (1.12%)	3,372 (1.27%)
Characteristics			
Type II Diabetes	123,583 (70.67%)	61,945 (68.86%)	185,528 (70.05%)
Overweight or Obesity	96,933 (55.43%)	52,664 (58.54%)	149,597 (56.49%)
Medication			
Semaglutide	87,293 (49.92%)	44,065 (48.98%)	131,358 (49.60%)
Tirzepatide	11,259 (6.44%)	3,743 (4.16%)	15,002 (5.66%)
Liraglutide	18,557 (10.61%)	19,432 (21.60%)	37,989 (14.34%)
Dulaglutide	49,074 (28.06%)	18,041 (20.05%)	67,115 (25.34%)
Other	8,696 (4.97%)	4,678 (5.20%)	13,374 (5.05%)
Labeled Use			
ADM	132,547 (75.79%)	58,603 (65.14%)	191,150 (72.18%)
AOM	3,213 (1.84%)	6,227 (6.92%)	9,440 (3.56%)
Unknown	39,119 (22.37%)	25,129 (27.93%)	64,248 (24.26%)
Year			
2018	13,975 (7.99%)	10,562 (11.74%)	24,537 (9.26%)
2019	12,163 (6.96%)	8,900 (9.89%)	21,063 (7.95%)
2020	12,607 (7.21%)	9,038 (10.05%)	21,645 (8.17%)
2021	20,460 (11.70%)	12,697 (14.11%)	33,157 (12.52%)
2022	37,554 (21.47%)	18,261 (20.30%)	55,815 (21.08%)
2023	66,354 (37.94%)	26,204 (29.13%)	92,558 (34.95%)
2024	11,766 (6.73%)	4,297 (4.78%)	16,063 (6.07%)
Comorbidity			
Asthma	19,988 (11.43%)	10,094 (11.22%)	30,082 (11.36%)
CKD	54,311 (31.06%)	30,553 (33.96%)	84,864 (32.04%)
COPD	17,263 (9.87%)	9,807 (10.90%)	27,070 (10.22%)
Hyperlipidemia	116,772 (66.77%)	64,652 (71.87%)	181,424 (68.50%)
Hypertension	122,413 (70.00%)	68,747 (76.42%)	191,160 (72.18%)
Major Depression	21,303 (12.18%)	11,463 (12.74%)	32,766 (12.37%)

College Past Present			
Attended but not currently	11,806 (6.75%)	6,600 (7.34%)	18,406 (6.95%)
Currently attending	510 (0.29%)	303 (0.34%)	813 (0.31%)
No college on record	139,274 (79.64%)	72,834 (80.96%)	212,108 (80.09%)
Unknown	23,289 (13.32%)	10,222 (11.36%)	33,511 (12.65%)
Estimated Individual Income			
0 - 25,000	3,386 (1.94%)	1,482 (1.65%)	4,868 (1.84%)
25,001 - 30,000	6,972 (3.99%)	3,563 (3.96%)	10,535 (3.98%)
30,001 - 35,000	14,100 (8.06%)	7,223 (8.03%)	21,323 (8.05%)
35,001 - 40,000	16,122 (9.22%)	8,783 (9.76%)	24,905 (9.40%)
40,001 - 50,000	31,787 (18.18%)	17,313 (19.25%)	49,100 (18.54%)
50,001 - 60,000	26,543 (15.18%)	14,391 (16.00%)	40,934 (15.46%)
60,001 - 80,000	29,084 (16.63%)	15,469 (17.20%)	44,553 (16.82%)
80,001 - 100,000	13,367 (7.64%)	6,570 (7.30%)	19,937 (7.53%)
100,001 - 120,000	6,279 (3.59%)	3,091 (3.44%)	9,370 (3.54%)
120,001 - 150,000	3,351 (1.92%)	1,587 (1.76%)	4,938 (1.86%)
More than 150K	600 (0.34%)	269 (0.30%)	869 (0.33%)
Unknown	23,288 (13.32%)	10,218 (11.36%)	33,506 (12.65%)

Patient characteristics for patients aged 18-65 are given in Table 5:

*Table 5: Patient Characteristics by Dispense Status, Age 18-64. Dispense status refers to presence of any GLP-1 RA dispense within 60 days of first GLP-1 RA prescription. Table contains the subset of patients with observable 60-day dispense outcomes.*

	Dispensed in 60 Days	Not Dispensed in 60 Days	Overall
N	452,726 (100.00%)	261,068 (100.00%)	713,794 (100.00%)
Age Group			
18-44	127,269 (28.11%)	91,348 (34.99%)	218,617 (30.63%)
45-64	325,457 (71.89%)	169,720 (65.01%)	495,177 (69.37%)
Sex			
Female	285,406 (63.04%)	177,267 (67.90%)	462,673 (64.82%)
Male	167,297 (36.95%)	83,794 (32.10%)	251,091 (35.18%)
Other	23 (0.01%)	7 (0.00%)	30 (0.00%)
Race			
White	316,074 (69.82%)	185,513 (71.06%)	501,587 (70.27%)
Black or African American	62,579 (13.82%)	37,705 (14.44%)	100,284 (14.05%)
Asian	11,542 (2.55%)	5,691 (2.18%)	17,233 (2.41%)
Unknown	25,054 (5.53%)	12,449 (4.77%)	37,503 (5.25%)
Native Hawaiian or Other Pacific Islander	1,752 (0.39%)	939 (0.36%)	2,691 (0.38%)
American Indian or Alaska Native	3,403 (0.75%)	1,967 (0.75%)	5,370 (0.75%)
Other Race	26,799 (5.92%)	13,914 (5.33%)	40,713 (5.70%)
Declined to answer	5,523 (1.22%)	2,890 (1.11%)	8,413 (1.18%)

Ethnicity			
Hispanic or Latino	60,142 (13.28%)	36,718 (14.06%)	96,860 (13.57%)
Not Hispanic or Latino	359,502 (79.41%)	207,971 (79.66%)	567,473 (79.50%)
Unknown	27,309 (6.03%)	13,576 (5.20%)	40,885 (5.73%)
Declined to answer	5,773 (1.28%)	2,803 (1.07%)	8,576 (1.20%)
Characteristics			
Type II Diabetes	256,481 (56.65%)	105,957 (40.59%)	362,438 (50.78%)
Overweight or Obesity	272,296 (60.15%)	185,867 (71.19%)	458,163 (64.19%)
Medication			
Semaglutide	237,952 (52.56%)	155,609 (59.60%)	393,561 (55.14%)
Tirzepatide	52,758 (11.65%)	23,606 (9.04%)	76,364 (10.70%)
Liraglutide	52,744 (11.65%)	46,022 (17.63%)	98,766 (13.84%)
Dulaglutide	95,333 (21.06%)	28,218 (10.81%)	123,551 (17.31%)
Other	13,939 (3.08%)	7,613 (2.92%)	21,552 (3.02%)
Labeled Use			
ADM	311,546 (68.82%)	128,199 (49.11%)	439,745 (61.61%)
AOM	41,331 (9.13%)	52,202 (20.00%)	93,533 (13.10%)
Unknown	99,849 (22.06%)	80,667 (30.90%)	180,516 (25.29%)
Year			
2018	34,526 (7.63%)	22,732 (8.71%)	57,258 (8.02%)
2019	28,966 (6.40%)	17,889 (6.85%)	46,855 (6.56%)
2020	29,863 (6.60%)	18,308 (7.01%)	48,171 (6.75%)
2021	48,997 (10.82%)	27,335 (10.47%)	76,332 (10.69%)
2022	105,688 (23.34%)	52,507 (20.11%)	158,195 (22.16%)
2023	176,754 (39.04%)	108,565 (41.58%)	285,319 (39.97%)
2024	27,932 (6.17%)	13,732 (5.26%)	41,664 (5.84%)
Comorbidity			
Asthma	60,737 (13.42%)	36,913 (14.14%)	97,650 (13.68%)
CKD	41,901 (9.26%)	22,043 (8.44%)	63,944 (8.96%)
COPD	18,331 (4.05%)	9,104 (3.49%)	27,435 (3.84%)
Hyperlipidemia	226,296 (49.99%)	127,334 (48.77%)	353,630 (49.54%)
Hypertension	231,980 (51.24%)	133,036 (50.96%)	365,016 (51.14%)
Major Depression	58,687 (12.96%)	41,038 (15.72%)	99,725 (13.97%)
College Past Present			
Attended but not currently	216,785 (47.88%)	138,124 (52.91%)	354,909 (49.72%)
Currently attending	6,011 (1.33%)	5,112 (1.96%)	11,123 (1.56%)
No college on record	175,855 (38.84%)	91,430 (35.02%)	267,285 (37.45%)
Unknown	54,075 (11.94%)	26,402 (10.11%)	80,477 (11.27%)
Estimated Individual Income			
0 - 25,000	13,182 (2.91%)	8,670 (3.32%)	21,852 (3.06%)
25,001 - 30,000	18,717 (4.13%)	11,978 (4.59%)	30,695 (4.30%)
30,001 - 35,000	26,800 (5.92%)	15,934 (6.10%)	42,734 (5.99%)
35,001 - 40,000	38,935 (8.60%)	22,499 (8.62%)	61,434 (8.61%)

40,001 - 50,000	88,679 (19.59%)	50,073 (19.18%)	138,752 (19.44%)
50,001 - 60,000	71,084 (15.70%)	41,506 (15.90%)	112,590 (15.77%)
60,001 - 80,000	81,165 (17.93%)	47,692 (18.27%)	128,857 (18.05%)
80,001 - 100,000	34,003 (7.51%)	20,055 (7.68%)	54,058 (7.57%)
100,001 - 120,000	15,217 (3.36%)	9,398 (3.60%)	24,615 (3.45%)
120,001 - 150,000	8,741 (1.93%)	5,498 (2.11%)	14,239 (1.99%)
More than 150K	2,143 (0.47%)	1,370 (0.52%)	3,513 (0.49%)
Unknown	54,060 (11.94%)	26,395 (10.11%)	80,455 (11.27%)

## Discussion and Conclusion

This analysis summarized GLP-1 RA prescribing trends and patient characteristics from January 2018 to March 2024. During this period 1,055,900 patients were prescribed a total of 4,161,731 total prescriptions. ADMs accounted for 89.0% of prescriptions, and AOMs accounted for 11.0%, among prescriptions where use was known. A larger proportion of ADMs, compared to AOMs, were dispensed within 60 days: 70.4% of first-time ADM prescriptions and 43.3% of first-time AOM prescriptions had a fill within 60 days.

Several limitations of our analysis should be noted. All data are preliminary and may change as additional data are obtained. These findings are consistent with data accessed April 15, 2024. Data presented in this analysis represent raw counts and/or rates, and post-stratification methods have not been conducted. In addition, cohorts with small counts may be suppressed during the de-identification process leading to the appearance of zero patients for a given time period. Given relatively large numbers of patients prescribed and dispensed GLP-1 RA, we do not expect substantial suppression in the most recent periods. The unknowns in this report either indicate the value was not included in the individual's electronic health record or that it was excluded from the data to protect an individual's identity as a part of Truveta's commitment to privacy (Truveta, 2024). Finally, this report is a description of prescribing trends and patient characteristics only. Results should not be interpreted as causal.

## References

Truveta. (2024). Truveta's Approach to Patient Privacy.

<https://resources.truveta.com/patient-privacy>

Centers for disease control and prevention. "National diabetes statistics report". 2020.

<https://www.cdc.gov/diabetes/data/statistics-report/index.html>.

Davies, Melanie J., et al. "Efficacy of liraglutide for weight loss among patients with type 2 diabetes: the SCALE diabetes randomized clinical trial." *JAMA* 314.7 (2015): 687-699.

Davies, Melanie, et al. "Semaglutide 2· 4 mg once a week in adults with overweight or obesity, and type 2 diabetes (STEP 2): a randomised, double-blind, double-dummy, placebo-controlled, phase 3 trial." *The Lancet* 397.10278 (2021): 971-984.

Hales, Craig M., et al. "Prevalence of obesity and severe obesity among adults: United States, 2017–2018. NCHS Data Brief, no 360." National Center for Health Statistics 360 (2020): 1-7.

Han, Sabrina H., et al. "Public interest in the off-label use of glucagon-like peptide 1 agonists (Ozempic) for cosmetic weight loss: a google trends analysis." *Aesthetic Surgery Journal* 44.1 (2024): 60-67.

Garvey, W. Timothy, et al. "Tirzepatide once weekly for the treatment of obesity in people with type 2 diabetes (SURMOUNT-2): a double-blind, randomised, multicentre, placebo-controlled, phase 3 trial." *The Lancet* (2023).

Jastreboff, Ania M., et al. "Tirzepatide once weekly for the treatment of obesity." *New England Journal of Medicine* 387.3 (2022): 205-216.

Lincoff, A. Michael, et al. "Semaglutide and cardiovascular outcomes in obesity without diabetes." *New England Journal of Medicine* 389.24 (2023): 2221-2232.

Ussher, John R., and Daniel J. Drucker. "Glucagon-like peptide 1 receptor agonists: cardiovascular benefits and mechanisms of action." *Nature Reviews Cardiology* 20.7 (2023): 463-474.

Wilding, John PH, et al. "Once-weekly semaglutide in adults with overweight or obesity." *New England Journal of Medicine* 384.11 (2021): 989-1002.

Whitley, Heather P., Jennifer M. Trujillo, and Joshua J. Neumiller. "Potential Strategies for Addressing GLP-1 and Dual GLP-1/GIP Receptor Agonist Shortages." *Clinical Diabetes* (2023): cd230023.

Yeh, Tzu-Lin, et al. "Effect of glucagon-like peptide-1 receptor agonists on glycemic control, and weight reduction in adults: A multivariate meta-analysis." *PLOS One* 18.1 (2023): e0278685.



## Acknowledgements

The authors thank Dr. Ty Gluckman for his contributions and feedback on describing GLP-1 RA prescribing trends.