

1 **Disease-specific variant interpretation highlighted the genetic findings in**
2 **2325 Japanese patients with retinitis pigmentosa and allied diseases**

3
4 Kensuke Goto,^{#1} Yoshito Koyanagi,^{#1,2,3} Masato Akiyama,^{2,4} Yusuke Murakami,² Masatoshi
5 Fukushima,² Kohta Fujiwara,² Hanae Iijima,⁵ Mitsuyo Yamaguchi,⁵ Mikiko Endo,⁵ Kazuki
6 Hashimoto,⁶ Masataka Ishizu,⁷ Toshiaki Hirakata,⁸ Kei Mizobuchi,⁹ Masakazu Takayama,¹⁰
7 Junya Ota,¹ Ai Fujita Sajiki,¹ Taro Kominami,¹ Hiroaki Ushida,¹ Kosuke Fujita,¹ Hiroki
8 Kaneko,¹ Shinji Ueno,^{1,11} Takaaki Hayashi,⁹ Chikashi Terao,³ Yoshihiro Hotta,¹⁰ Akira
9 Murakami,⁸ Kazuki Kuniyoshi,¹² Shunji Kusaka,¹² Yuko Wada,¹³ Toshiaki Abe,¹⁴ Toru
10 Nakazawa,⁶ Yasuhiro Ikeda,⁷ Yukihide Momozawa,⁵ Koh-Hei Sonoda,^{†2} Koji M.
11 Nishiguchi^{†1}

12 # These authors contributed equally to this manuscript.

13 †Correspondence to Koh-Hei Sonoda & Koji M. Nishiguchi

14

15 1. Department of Ophthalmology, Nagoya University Graduate School of Medicine,
16 Nagoya, Japan

17 2. Department of Ophthalmology, Graduate School of Medical Sciences, Kyushu
18 University, Fukuoka, Japan

19 3. Laboratory for Statistical and Translational Genetics, RIKEN Center for Integrative
20 Medical Sciences, Kanagawa, Japan

21 4. Department of Ocular Pathology and Imaging Science, Graduate School of Medical
22 Sciences, Kyushu University, Fukuoka, Japan

23 5. Laboratory for Genotyping Development, RIKEN Center for Integrative Medical
24 Sciences, Kanagawa, Japan

25 6. Department of Ophthalmology, Tohoku University Graduate School of Medicine, Sendai,
26 Japan

27 7. Department of Ophthalmology, Faculty of Medicine, University of Miyazaki, Miyazaki,
28 Japan

29 8. Department of Ophthalmology, Juntendo University Graduate School of Medicine,
30 Tokyo, Japan

31 9. Department of Ophthalmology, The Jikei University School of Medicine, Tokyo, Japan

32 10. Department of Ophthalmology, Hamamatsu University School of Medicine, Shizuoka,
33 Japan

- 34 11. Department of Ophthalmology, Hirosaki University Graduate School of Medicine,
35 Hisoraki, Japan
- 36 12. Department of Ophthalmology, Kindai University Faculty of Medicine, Osaka-sayama,
37 Japan
- 38 13. Yuko Wada Eye Clinic, Sendai, Japan
- 39 14. Division of Clinical Cell Therapy, United Centers for Advanced Research and
40 Translational Medicine, Tohoku University Graduate School of Medicine, Sendai, Japan
41
- 42 *Correspondence:
43 Koji M. Nishiguchi
44 Department of Ophthalmology
45 Nagoya University Graduate School of Medicine
46 65 Tsurumai-cho, Showa-ku, Nagoya, Aichi, 466-8560, Japan
47 Tel: 81-52-744-2275; Fax: 81-52-744-2278
48 Email: kmn@med.nagoya-u.ac.jp
49
- 50 Koh-Hei Sonoda
51 Department of Ophthalmology
52 Graduate School of Medical Sciences, Kyushu University
53 3-1-1 Maidashi, Higashi-ku, Fukuoka, 812-8582, Japan
54 Tel: 81-92-642-5648; Fax: 81-92-642-5663
55 E-mail: k.sonoda.a74@m.kyushu-u.ac.jp

56 **Abstract**

57 **Background:** As gene-specific therapy for inherited retinal dystrophy (IRD) advances,
58 unified variant interpretation across institutes is becoming increasingly important. This
59 study aims to update the genetic findings of 86 retinitis pigmentosa (RP)–related genes in a
60 large number of Japanese RP patients by applying the standardized variant interpretation
61 guidelines for Japanese IRD patients (J-IRD-VI guidelines) built upon ACMG/AMP rules
62 and assess the contribution of these genes in RP-allied diseases.

63

64 **Methods:** We assessed 2325 probands with RP (n=2155, including n=1204 sequenced
65 previously with the same sequencing panel) and allied diseases (n=170, all newly
66 analyzed), including Usher syndrome, Leber congenital amaurosis, and cone-rod dystrophy
67 (CRD). Target sequencing using a panel of 86 genes was performed. The variants were
68 interpreted according to the J-IRD-VI guidelines.

69

70 **Results:** A total of 3564 variants were detected, of which 524 variants were interpreted as
71 pathogenic or likely pathogenic. Among these 524 variants, 280 (53.4%) had been either
72 undetected or interpreted as variants of unknown significance or benign variants in our
73 earlier study of 1204 RP patients. This led to a genetic diagnostic rate in 38.6% of RP
74 patients, with *EYS* accounting for 46.7% of the genetically solved patients, showing a 9%
75 increase in diagnostic rate from our earlier study. The genetic diagnostic rate for CRD
76 patients was 28.2%, with RP-related genes significantly contributing over other allied
77 diseases.

78

79 **Conclusion:** A large-scale genetic analysis using the J-IRD-VI guidelines highlighted the
80 unique genetic findings for Japanese IRD patients; these findings serve as a foundation for
81 the clinical application of gene-specific therapies.

82 **Introduction**

83 Inherited retinal dystrophy (IRD) is a disorder characterized by the degeneration of
84 photoreceptors and the retinal pigment epithelium, leading to symptoms such as night
85 blindness and visual impairment.¹⁻³ Retinitis pigmentosa (RP, OMIM 268000) is the most
86 common form of IRD, with a prevalence of approximately 1 in 3000–4000 people; thus, an
87 estimated 2.5 million people worldwide have RP.^{1,4} Although effective treatments for IRD
88 have been limited in the past, recent advancements in gene/variant-specific therapies
89 suggest that IRD might now be amenable to interventions.⁵ Given the progress of genomic
90 medicine, there is a growing interest in the standardized interpretation of variants that can
91 be reproduced by different institutes.

92 Genetic screening studies for RP have reported variable diagnosis rates, in the range of
93 37.4% to 66.6% in Western countries⁶⁻⁹ and 29.6% to 72.1% in Asia.¹⁰⁻¹³ The rate may be
94 lower in Japan, ranging from 29.6% to 47.9%,^{10,14-16} depending on the report. The variation
95 in these figures could arise from whether the American College of Medical Genetics and
96 Genomics and the Association for Molecular Pathology (ACMG/AMP) guidelines¹⁷ were
97 applied for variant interpretation or how they were applied, as these guidelines require
98 specification of multiple items that take into account the unique biological and
99 epidemiological characteristics of each inherited disease.¹⁸ Without predefined guidelines,
100 variant interpretation can differ substantially between institutes, which may contribute to
101 the variability in genetic interpretation of a given variant.¹⁹ Japan has a different genetic
102 architecture of IRD compared to Western countries and even neighboring countries,^{14,20,21}
103 leading the Japanese Retina and Vitreous Society to publish a modified set of guidelines,
104 the Japanese inherited retinal dystrophy variant interpretation (J-IRD-VI) guidelines. These
105 guidelines are built upon predefined ACMG/AMP rules based on a thorough discussion
106 among the expert members of key genetic laboratories and allow a uniform interpretation of
107 variants tailored specifically for Japanese patients.²²

108 In our previous collaborative genetic study using a next generation sequencing (NGS) panel
109 of 86 genes associated with RP, the rate of genetically solved cases (diagnosis rate) in 1204
110 RP patients was 29.6%.¹⁰ Unfortunately, the ACMG/AMP guidelines was not applied for
111 variant interpretation and a unique criteria was adopted, which relied heavily on the
112 interpretation of previous reports, without taking into consideration the quality of the
113 evidence provided in the literature. In addition, only typical RP phenotype was included in
114 the study, leaving out the genetic background of allied diseases, which are sometimes

115 difficult to differentiate from RP.
116 The purpose of this study was to update the genetic findings using the J-IRD-VI guidelines
117 and expand our assessment to include a larger number of patients, especially those with a
118 phenotype that overlapped with RP. This study may serve as a foundation for future gene-
119 variant-specific therapies for IRD in Japan.

120 **Materials and methods**

121 **Ethic statement and study subjects**

122 This study was conducted in accordance with the principles of the Helsinki Declaration and
123 was approved by the ethical boards of each institute. All participants provided written
124 informed consent at their respective recruiting institute. An overview of the study is shown
125 in figure 1. We collected DNA samples from 2662 patients with IRD from nine Japanese
126 facilities in the Japan Retinitis Pigmentosa Registry Project (2002–2021), namely Nagoya
127 University Hospital (n=790), Kyushu University Hospital (n=706), Tohoku University
128 Hospital (n=336), Yuko Wada Eye Clinic (n=327), Kindai University Hospital (n=203),
129 University of Miyazaki Hospital and Miyata Eye Hospital (n=112), Juntendo University
130 Hospital (n=87), The Jikei University Hospital (n=63), and Hamamatsu University Hospital
131 (n=38). When collecting DNA samples, each sample was assigned an anonymized number
132 by each institute to ensure that the individual subjects cannot be identified by members
133 outside of each institute.

134

135 **Patient selection**

136 From a total of 2662 patients, we selected for analysis patients with RP and patients with
137 allied diseases with clinical findings that overlap with RP, including Usher syndrome,
138 Leber congenital amaurosis (LCA), cone-rod dystrophy (CRD), choroideremia, and Bietti
139 crystalline dystrophy (BCD). Clinical diagnoses were made by well-trained
140 ophthalmologists based on symptoms such as visual acuity loss, visual field loss,
141 photophobia and night blindness, fundus examination, electroretinogram, fundus
142 autofluorescence images, and optical coherence tomography images. We excluded patients
143 (n=258) with IRD with substantially different phenotypes from RP, including macular
144 dystrophy, Best disease, and Stargardt disease. We also excluded related patients (n=80) so
145 that a single patient represented each family. As a result, we enrolled 2325 probands with
146 non-syndromic RP (n=2155, including n=1204 we had previously sequenced with the same
147 sequencing panel¹⁰) or allied diseases (n=170), such as Usher syndrome (n=32), LCA
148 (n=15), CRD (n=78), choroideremia (n=11), or BCD (n=34).

149

150 **Target sequencing for 86 genes**

151 We used a previously established panel of 86 genes associated with RP and allied
152 diseases.¹⁰ These genes include 83 genes associated with RP that were registered in the

153 Retinal Information Network (RetNet) as of September 19, 2017, as well as three additional
154 genes (*CHM*, *CEP290*, and *IMPG1*) that are major causative genes for other IRDs. Our
155 study was designed to capture the coding regions of the transcripts as well as 2 bp into each
156 exon-adjacent intron and also include a deep intronic variant, c.2991+1655 A>G, in
157 *CEP290*. Multiplex polymerase chain reaction (PCR)–based target sequencing was
158 performed as described previously.²³ Briefly, multiplex PCR was performed by designing
159 primers covering all coding regions of the 86 genes. Next, a second PCR test was
160 performed to add dual barcodes to the first PCR product. Finally, the second PCR product
161 was sequenced using a HiSeq 2500 instrument (Illumina, San Diego, CA) to obtain 2×151
162 bp paired end reads with dual 8 bp barcode sequences.

163

164 **Analysis of sequencing data**

165 Analysis of sequence data was performed as previous reported.¹⁰ Sequencing reads were
166 demultiplexed using bcl2fastq2 V.2.20 (Illumina), followed by alignment to the human
167 reference genome (hg19) using Burrows-Wheeler Aligner (V.0.7.17). Post-alignment
168 processing, including indel realignment, was performed with the Genome Analysis Toolkit
169 (GATK) (V.3.7), leading to variant calling via HaplotypeCaller and UnifiedGenotyper, and
170 subsequent integration of variants. Alternative allele frequencies (AF) were calculated
171 using SAMtools (V.1.6) and genotype variants were selected based on frequency
172 histograms and quality filtering. The final set of identified variants was annotated using
173 ANNOVAR (V.3.4) and SnpEff (V.4.3), with the transcripts registered in CCDS Release 24
174 and refGene. We defined the covered region as a region with bases having ≥ 20 sequencing
175 reads in the target region. The coverage per base was calculated as the number of covered
176 samples divided by the number of all samples. The cover rate per gene (%) was defined as
177 the average coverage per base of the target region. We successfully sequenced $\geq 98.0\%$ of
178 the targeted regions of the 86 genes in all 2325 samples and used all samples for further
179 analysis. The average read depth (\pm SD) was 1410 (\pm 359) per sample. We called variants in
180 the regions with ≥ 20 read depth, which included 99.65% of the targeted regions (online
181 supplementary table S1). We confirmed the presence of pathogenic variants through visual
182 inspection using the integrative genomics viewer (IGV), making manual corrections for
183 annotations when multiple alternative alleles or single-nucleotide variants with deletions
184 were identified at the same site. This led to the reassignment of annotations for 10 variants
185 across four genes (see online supplementary figure S1 and table S2).

186

187 **Genotyping of the founder variants in *RPI* and *CYP4V2***

188 In addition to NGS panel of 86 genes, we analyzed each of two variants associated with
189 IRDs²⁴⁻²⁶ in a different way, with *Alu* insertion in *RPI* and c.802-8_810del17insGC in
190 *CYP4V2*; these genes are not detectable with our NGS panel. To screen *Alu* insertion in
191 exon 4 in *RPI* in all patients, we searched for *Alu* sequences in FASTQ files obtained by
192 NGS using a grep search program, as previously reported.²⁷ We selected patients for whom
193 we had either detected *Alu* sequences in at least one read or who were heterozygous for
194 pathogenic variants in *RPI* as the subjects for genotyping. Genotyping was performed
195 using an optimized PCR-based method for the selected patients as previously described.²⁴
196 Among the subjects, 23 patients whose genotyping of *Alu* insertion was previously reported
197 by us²⁴ were referenced for those results. To screen c.802-8_810del17insGC in *CYP4V2* in
198 all patients, we developed a grep search program for FASTQ format files. We searched for
199 a unique 20-base sequence containing c.802-8_810del17insGC in *CYP4V2* using the grep
200 command in Linux (online supplementary table S3), and the AF is calculated as (alternative
201 allele read count) / {(alternative allele read count) + (reference allele read count)} in all
202 patients. Allele frequencies ranging from 0.25 to 0.75 were defined as heterozygotes, while
203 frequencies ranging from 0.85 to 1.0 were defined as homozygotes.

204

205 **Variant interpretation**

206 Among the 86 genes in our NGS panel, two genes that had previously been reported as
207 associated with RP but whose pathogenicity has been questioned by recent studies²⁸⁻³⁰ were
208 excluded from our analysis, resulting in a final set of 84 genes for interpretation of
209 pathogenicity. We interpreted the variants according to the J-IRD-VI guidelines²² published
210 by the Japanese Retina and Vitreous Society. A detailed description of the evaluation
211 procedures is provided below. The automated application AutoPVS1
212 (<http://autopvs1.genetics.bgi.com/>)³¹ (accessed on 16 August 2022) was used to evaluate
213 the PVS1 criteria for null variants. As defined in the ACMG guideline criteria for hearing
214 loss³¹, we defined exons containing null variants with an AF exceeding 0.3% in
215 the Genome Aggregation Database (gnomAD)³² as lacking functional significance. For 23
216 null variants that output errors (as not “null variants”) due to differences in the definition of
217 the coding region in AutoPVS1, the PVS1 criteria were evaluated manually. To assess the
218 frequency of variants in general populations (BA1, BS1, PM2), we used the gnomAD total

219 population, the gnomAD population max, the Human Genetic Variation Database (HGVD),
220 and Tohoku Medical Megabank Organization (ToMMo) 8.3KJPN. If the highest AF in any
221 of the four databases met the cut-off value, the respective criteria were applied to variants.
222 BA1 was not applied based on an expert opinion for variants previously reported as being
223 pathogenic by multiple groups but meeting the BA1 cut-off value (online supplementary
224 table S4).³³⁻³⁸ To calculate odds ratios for minor alleles in the PS4 criteria, ToMMo 38KJPN
225 for autosome and 14KJPN for chromosome X were used as ancestry-matched controls. To
226 evaluate PM3, we counted the number of probands with heterozygous pathogenic variants
227 and those with homozygotes from both our subject patients and the prior literature listed in
228 the Human Genome Mutation Database Professional (HGMD Professional, 2022.2). The
229 strength of PM3 was assessed by summing the counts of these two sets of probands. In the
230 computational evidence category (PP3, BP4, BP7), we employed predictive tools:
231 REVEL³⁹ for predicting the pathogenicity of missense variants and Splicing AI⁴⁰ for
232 predicting splice site changes. The PP5 criteria were evaluated based on ClinVar (accessed
233 on 20 August 2022). The BP2 criteria were applied to variants founded in cases with
234 homozygous pathogenic variants within the same gene.

235

236 **Criteria for genetic diagnosis**

237 We performed a genetic diagnosis using the variants regarded as “pathogenic” or “likely
238 pathogenic” by the J-IRD-VI guidelines, as well as the two founder variants, *Alu* insertion
239 in *RPI* and c.802-8_810del17insGC in *CYP4V2*. We applied the genetic inheritance forms
240 defined in RetNet for each gene, following the classical Mendelian inheritance pattern and
241 attempted to determine the causative variant and make a genetic diagnosis in each case as
242 previously reported.¹⁰ If a gene was registered on RetNet in multiple inheritance forms, we
243 determined the genetic inheritance form of each variant based on the prior literature.

244 Furthermore, when a patient had pathogenic variants in multiple genes leading to a genetic
245 diagnosis, all the genes were listed as potential causative genes, rather than selecting just
246 one. Finally, we regarded patients whose causative genes were determined as “solved” and
247 patients whose causative genes could not be determined as “unsolved”.

248 **Results**

249 **Results of variants interpretations of 86 genes in 2325 patients**

250 The clinical characteristics of the patients are summarized in table 1. In the RP patients, the
251 modes of inheritance as obtained from clinical records were as follows: AD in 284 (13.2%),
252 AR in 410 (19.0%), XL in 34 (1.6%) and sporadic in 1182 (54.8%) (table 1). A
253 comprehensive list of variant interpretation using J-IRD-VI guidelines is shown in online
254 supplementary table S5. We identified a total of 3564 variants, including 2143 missense
255 variants, 169 nonsense variants, 168 frameshift indels, 40 non-frameshift indels, 53
256 canonical splice site variants, and 973 synonymous variants.

257 The detected variants were interpreted according to the J-IRD-VI guidelines using an in-
258 house program. As a result, 211 variants were interpreted as pathogenic, 313 variants as
259 likely pathogenic, 1880 variants as variants of unknown significance (VUS), 516 variants
260 as likely benign, and 644 variants as benign. Among the 524 variants interpreted as
261 pathogenic or likely pathogenic, 209 (39.9%), 249 (47.5%), and 290 (55.3%) had not
262 previously been reported in our earlier study of 1204 patients with typical RP, HGMD, or
263 ClinVar, yielding 107 new disease-associated variants. This included 71 variants considered
264 VUS or benign variants in the previous study. At the same time, 118 variants considered
265 pathogenic or likely pathogenic were reassigned to the VUS or benign categories. Thus,
266 only 245 out of 363 pathogenic or likely pathogenic variants (67.5%) in the previous study
267 maintained the same interpretation in the current study.

268

269 **Genotyping results of *Alu* insertion in *RPI* and c.802-8_810del17insGC in *CYP4V2***

270 Two frequent variants in *RPI* and *CYP4V2* are known to be associated with RP and allied
271 diseases and are missed by the standard analysis pipeline; thus, we analyzed them in a
272 different way. To look for the known common 328bp *Alu* insertion [c.4052_4053ins328,
273 p.(Tyr1352Alafs)] in *RPI*,^{24,26} we conducted screening of FASTQ files using a grep search
274 program²⁷ in all patients. *Alu* sequences were detected in at least one read for 24 patients.
275 Then, we selected a total of 138 patients for whom we either detected *Alu* sequences in at
276 least one read or who were heterozygous for pathogenic variants in *RPI* as the subjects for
277 genotyping. These samples were further analyzed with a PCR-based method. We found that
278 24 patients were heterozygous for the *Alu* insertion and 10 were homozygous. Among the
279 24 patients who were heterozygous carriers of *Alu* insertions, 18 were found to have
280 another pathogenic variant in *RPI*. As for the splice site variant c.802-8_810del17insGC in

281 *CYP4V2*, which is associated with BCD²⁵, we screened all patients by the searching for a
282 20-base sequence encompassing the variant region in FASTQ files using software. This
283 revealed that 22 patients, including 16 with RP and 5 with BCD, were heterozygous and 16,
284 including 13 with BCD, were homozygous for this change (online supplementary table S6).
285 Among the 22 patients who were heterozygous, 5 with BCD and 1 with RP were found to
286 have another pathogenic variant in *CYP4V2*.

287

288 **High-frequency pathogenic variants in solved and unsolved patients with RP**

289 Figure 2 summarizes the proportion of causative variants detected in the solved patients
290 with RP (n=831) and pathogenic or likely pathogenic variants detected in unsolved patients
291 with RP (n=1324) (figure 2B). In particular, [p.(Ser1653fs), p.(Gly843Glu), and
292 p.(Tyr2935*) in *EYS*] and *Alu* insertion [p.(Tyr1352Alafs)] in *RPI* were found in 27.2%
293 (226/831), 20.1% (167/831), 11.9% (99/831), and 2.9% (24/831) of solved patients,
294 accounting for 18.2%, 13.2%, 8.1%, and 2.3% of the total alleles of causative variants,
295 respectively (figure 2A). Among unsolved patients, 37.0% (490/1324) were found to carry
296 pathogenic or likely pathogenic variants. Specifically, [p.(Gly843Glu), p.(Ser1653fs), and
297 p.(Tyr2935*) in *EYS*] were detected in 7.3% (96/1324), 5.0% (66/1324), and 3.0%
298 (40/1324) of unsolved patients, accounting for 16.4%, 11.2%, and 6.8% of the total alleles
299 of pathogenic or likely pathogenic variants carried in unsolved patients, respectively (figure
300 2B).

301

302 **Genetic diagnosis with the detected pathogenic variants**

303 The overall genetic diagnosis rate was 38.4% (892/2325) for RP and allied diseases (figure
304 3). The figure was 38.6% (831/2155) for RP, 25.0% (8/32) for Usher syndrome, 6.7%
305 (1/15) for LCA, 28.2% (22/78) for CRD, 63.6% (7/11) for choroideremia, and 67.6%
306 (23/34) for BCD. The results for causative genes and variants for a total of 2325 patients
307 are summarized in online supplementary table S7. Of note, we detected 15 patients with
308 pathogenic or likely pathogenic variants in two genes, including 14 patients with RP and
309 one patient with choroideremia (online supplementary table S8).

310 Among the typical RP patients, 831 were genetically diagnosed with 320 pathogenic or
311 likely pathogenic variants in 49 genes (figure 4A). Pathogenic variants in *EYS*, which has
312 previously been reported to be the major gene responsible for RP in the Japanese
313 population, explained RP in nearly half (388/831, 46.7%) of solved patients, followed by

314 *USH2A* (67/831, 8.1%), *RHO* with dominant inheritance (41/831, 4.9%), *RPI* with
315 recessive inheritance (36/831, 4.3%), and *RPGR* (34/831, 4.1%). The breakdown of solved
316 cases by inheritance pattern based on clinical information was 47.2%, 43.9%, 33.6%, and
317 41.2% for AD, AR, sporadic, and XL, respectively. When separately analyzed by
318 inheritance pattern of each gene reported in RetNet, *EYS* (388/605, 64.1%) and *USH2A*
319 (67/605, 11.1%) accounted for 75.2% of patients diagnosed with ARRP (figure 4B).
320 Meanwhile, three genes (*RHO*, *RPI*, and *PRPH2*) explained more than half of solved cases
321 with ADRP (91/164, 55.5%). In X-linked RP (XLRP), pathogenic variants in *RPGR* were
322 found in the large majority of solved patients (n=34/50, 68.0%).
323 In Usher syndrome, a total of eight of 32 patients (25.0%) were genetically diagnosed. Six
324 patients had pathogenic variants in *USH2A* and two patients had pathogenic variants in
325 *CLRN1*. In LCA, only one of 15 patients was genetically diagnosed, while no pathogenic
326 variant was detected in the remaining 14 (93.3%) patients, consistent with a previous report
327 indicating little overlap between genes linked to RP and LCA in Japan.^{15 41} In CRD,
328 variants in *CRX*, *PRPH2*, and *RPI* were the most commonly linked to the disease, each
329 accounting for 7.7%, 5.1%, and 5.1% of the disease, respectively. Of the 11 patients
330 diagnosed with choroideremia, pathogenic variants in *CHM* were detected in six patients
331 (54.5%). Variants in the *CYP4V2* gene explained 67.6% (23/34) of patients with BCD, and
332 c.802-8_810del17insGC was detected in 5 compound heterozygotes and 14 homozygotes.

333 **Discussion**

334 In this study, we performed target sequencing in 2155 patients with RP and an additional
335 170 patients with allied diseases. This is nearly double the number of RP patients as in our
336 previous study, although 1204 patients from the previous study were also included in the
337 present one.¹⁰ We interpreted the detected variants according to the J-IRD-VI guidelines
338 which is based upon specified ACMG/AMP rules and tailored explicitly for IRD in the
339 Japanese population.²² Our results showed that the genetic diagnosis rate was 38.6% in the
340 RP patients, which is higher than the corresponding rate of 29.6% in our previous work,¹⁰
341 which adopted a different variant interpretation pipeline. Our findings are supported by the
342 diagnostic contribution of 107 newly assigned variants not reported in ClinVar, HGMD, or
343 our previous work, which comprised 20.4% of all pathogenic or likely pathogenic variants
344 detected in this study. In addition, extra genotyping of common *Alu* insertion in *RPI* and a
345 splice site variant in *CYP4V2*, both missed by our automated NGS analysis, contributed to
346 the increased diagnosis rate.

347 Although 1204 patients examined in our previous work were also included in this study,
348 only 67.5% of pathogenic or likely pathogenic variants had the same interpretation in the
349 earlier work and this one. This could largely be attributed to the difference in interpretation
350 criteria; the previous study adopted variant interpretation posted in ClinVar and HGMD. As
351 a result, the rate of contribution of the most prevalent disease genes changed considerably.
352 In particular, the proportion of *EYS* jumped from 30.9% to 46.7% in the current study,
353 which may be explained in part by the recent establishment of a very frequent variant
354 [p.(Gly843Glu) in *EYS*] as pathogenic.³⁶ Additionally, through a stringent application of J-
355 IRD-VI guidelines, nearly all variants in *RPILI*, which was previously the fifth most
356 prevalent RP-related gene in Japan and accounted for 4.8% of all solved RP cases, were
357 excluded in this study due to the high AF in the general population as defined in the J-IRD-
358 VI guidelines. Consequently, the current study has greatly enhanced the understanding of
359 the genetic architecture of Japanese RP patients.

360 This study also found that 37.0% of the unsolved RP patients carried pathogenic or likely
361 pathogenic recessive variants in one of the 86 RP-related genes. The AF of many of these
362 variants was higher than would be expected in the general population. For example, the AF
363 of p.(Ser1653fs) was 2.49% in unsolved RP patients and is 0.43% in the general population.
364 This may indicate that some of these heterozygous variants play a role in the disease in
365 unsolved cases and that there is a yet-unidentified pathogenic recessive variant *in trans* that

366 escaped the NGS panel sequence and standard analysis pipeline. Indeed, in an earlier
367 analysis, we carried out a genome-wide association study of RP, which showed a peak in
368 the *EYS* locus that surpassed genome-wide significance ($P = 3.79 \times 10^{-10}$) and for which no
369 corresponding exonic variant in *EYS* was linked,³⁶ indicating that there may be at least one
370 more undiscovered high-frequency variant in this gene. Furthermore, through long read
371 sequencing of 15 heterozygous carriers of an *EYS* pathogenic variant, we identified a large
372 structural variant encompassing multiple exons in *EYS* in 2 cases (13.3%),⁴² suggesting the
373 presence of undiscovered structural variants. Nevertheless, a more complex non-Mendelian
374 inheritance factor may also complicate genetic diagnosis,⁴³⁻⁴⁵ although the degree of its
375 importance in the context of overall genetic diagnosis remains largely unknown.

376 This study reports genetic analysis results of IRD cases with phenotypic overlap with RP in
377 a somewhat limited number of patients. We found a significant contribution of RP-related
378 genes in the genetic diagnosis rate of CRD (22 of 78 patients, 28.2%), although the figure
379 was smaller than for RP (38.6%). Unlike RP, variants in *CRX* were the most frequent causes
380 of CRD and *EYS* variants accounted for the disease in only 3.8% of cases. This was in
381 contrast to patients with BCD or choroideremia, both rarely diagnosed as RP, in which
382 variants in *CYP4V2* and *CHM*, respectively, explained most patients. Meanwhile, we
383 reached genetic diagnosis in only one of 15 patients with LCA, consistent with previous
384 reports indicating that genes causing RP and LCA are largely different in the Japanese
385 population.^{15 41} Nevertheless, these findings are important in the era of genomic medicine
386 because many emerging treatments for IRD are developed for each disease gene with less
387 emphasis on the clinical diagnosis itself; thus, understanding the phenotypic spectrum of
388 each disease gene is critical for the clinical application of these treatments.

389 There several limitations to this study. First, the J-IRD-VI guidelines used for variant
390 interpretation are customized for and validated in only Japanese IRD patients. For example,
391 mainly Japanese databases were designed to assess the rarity or enrichment of a variant in
392 question. This means that the same analysis pipeline may not be applicable to countries
393 outside Japan, even neighboring Asian countries. Nevertheless, since Japan consists of
394 islands geographically isolated from elsewhere, it is unavoidable that there will be unique
395 criteria for a sensitive and specific genetic diagnosis. Second, the RP-related genes
396 analyzed in the current study were selected based on those reported as causing non-
397 syndromic RP in RetNet as of 2017. They are not updated, nor do they comprehensively
398 cover genes reported for phenotypically related diseases such as CRD or LCA;

399 nevertheless, important novel RP-associated genes have not been reported in Japanese since
400 2017. It is likely that adopting whole exome sequencing or whole genome sequencing
401 would lead to an increased diagnostic rate, particularly in non-RP cases. Lastly, the number
402 of non-RP cases analyzed was too small to reach any conclusions. Nevertheless, the data
403 are sufficient to determine that there is a significant overlap between genes in RP and CRD
404 and that observing this is rare in some genes but more frequent in other genes, such as *CRX*,
405 *PRPH2*, or *RPI*.

406 In conclusion, our study stringently applied IRD-specific ACMG/AMP rules intended to
407 unify the genetic diagnosis of the disease within Japan in a large number of patients with
408 RP and allied diseases. This allowed us to substantially update the genetic background of
409 Japanese RP patients by detecting many new disease-associated variants. The results may
410 serve as an important foundation for developing future gene- or variant-specific treatments.

411 **Declarations**

412 **Ethics approval**

413 This study was approved by the ethics committees of all the collaborating hospitals and was
414 conducted in accordance with the tenets of the Declaration of Helsinki on biomedical
415 research involving human subjects. Written informed consent was obtained from all
416 subjects prior to participation in the study.

417

418 **Patient consent for publication**

419 Not required.

420

421 **Availability of data and materials**

422 All data relevant to the study are included in the article or uploaded as supplementary
423 information.

424

425 **Competing interests**

426 KMN reports grants from JCR Pharmaceuticals Co., Ltd., Sysmex Inc., and Novartis
427 Pharma Co., Ltd., consulting fees from Sysmex Inc. and Novartis Pharma Co., Ltd., and
428 Lecture fees from Sysmex Inc., Novartis Pharma Co., Ltd. and Janssen Co., Ltd.. KMN has
429 patents related to gene therapy for retinitis pigmentosa. In addition, KMN is an advisory
430 board member of Sysmex Inc. and Novartis Pharma Co., Ltd..

431

432 **Authors' contributions**

433 KG, YK, MA, YI, K-HS, and KMN designed the study. KG, YK, MA, YMu, MF, KFujiw,
434 KH, MI, THi, KM, MT, JO, AFS, TK, HU, HK, SU, THa, YH, AM, KK, SK, YW, TA, TN,
435 YI, K-HS, and KMN collected the samples and clinical data. KG, YK, HI, MY, ME, KFujit,
436 CT, and YMo performed the experiments and analyzed the data. KG, YK, MA, YMo, K-
437 HS, and KMN contributed to the manuscript preparation and editing. All authors
438 contributed to study conception and design, data interpretation, and approved the final
439 manuscript.

440

441 **Acknowledgements**

442 The study was supported by the Japan Retinitis Pigmentosa Registry Project and grants
443 from Japan Agency for Medical Research and Development (23ek0109632 to YI,

444 23ym0126071h0002 and 23ek0109660h0001 to KMN), Japan Society for the Promotion of
445 Science (20K23005 and 22K16969 to YK, 22K09831 to SU, 21K09756 to THa, 22K09825
446 to KK, and 23H03059 to KMN), Japanese Retinitis Pigmentosa Society (JRPS) Research
447 Grant to YK, and Takayanagi Retina Research Award to YK. We acknowledge the
448 Laboratory for Genotyping Development in RIKEN and the RIKEN-IMS Genome
449 Platform.

450

451 **References**

- 452 1. Hartong DT, Berson EL, Dryja TP. Retinitis pigmentosa. *Lancet* 2006;368(9549):1795-
453 809.
- 454 2. Campochiaro PA, Mir TA. The mechanism of cone cell death in Retinitis Pigmentosa. *Prog*
455 *Retin Eye Res* 2018;62:24-37.
- 456 3. Sancho-Pelluz J, Arango-Gonzalez B, Kustermann S, Romero FJ, van Veen T, Zrenner E,
457 Ekström P, Paquet-Durand F. Photoreceptor cell death mechanisms in inherited retinal
458 degeneration. *Mol Neurobiol* 2008;38(3):253-69.
- 459 4. Dias MF, Joo K, Kemp JA, Fialho SL, da Silva Cunha A, Jr., Woo SJ, Kwon YJ. Molecular
460 genetics and emerging therapies for retinitis pigmentosa: Basic research and clinical
461 perspectives. *Prog Retin Eye Res* 2018;63:107-31.
- 462 5. Russell S, Bennett J, Wellman JA, Chung DC, Yu ZF, Tillman A, Wittes J, Pappas J, Elci
463 O, McCague S, Cross D, Marshall KA, Walshire J, Kehoe TL, Reichert H, Davis M,
464 Raffini L, George LA, Hudson FP, Dingfield L, Zhu X, Haller JA, Sohn EH, Mahajan
465 VB, Pfeifer W, Weckmann M, Johnson C, Gewaily D, Drack A, Stone E, Wachtel K,
466 Simonelli F, Leroy BP, Wright JF, High KA, Maguire AM. Efficacy and safety of
467 voretigene neparvovec (AAV2-hRPE65v2) in patients with RPE65-mediated
468 inherited retinal dystrophy: a randomised, controlled, open-label, phase 3 trial. *Lancet*
469 2017;390(10097):849-60.
- 470 6. Stone EM, Andorf JL, Whitmore SS, DeLuca AP, Giacalone JC, Streb LM, Braun TA,
471 Mullins RF, Scheetz TE, Sheffield VC, Tucker BA. Clinically Focused Molecular
472 Investigation of 1000 Consecutive Families with Inherited Retinal Disease.
473 *Ophthalmology* 2017;124(9):1314-31.
- 474 7. Colombo L, Maltese PE, Castori M, El Shamieh S, Zeitz C, Audo I, Zulian A, Marinelli
475 C, Benedetti S, Costantini A, Bressan S, Percio M, Ferri P, Abeshi A, Bertelli M,
476 Rossetti L. Molecular Epidemiology in 591 Italian Proband With Nonsyndromic
477 Retinitis Pigmentosa and Usher Syndrome. *Invest Ophthalmol Vis Sci* 2021;62(2):13.
- 478 8. Goetz KE, Reeves MJ, Gagadam S, Blain D, Bender C, Lwin C, Naik A, Tumminia SJ,
479 Hufnagel RB. Genetic testing for inherited eye conditions in over 6,000 individuals
480 through the eyeGENE network. *Am J Med Genet C Semin Med Genet*
481 2020;184(3):828-37.
- 482 9. Weisschuh N, Obermaier CD, Battke F, Bernd A, Kuehlewein L, Nasser F, Zobor D,

- 483 Zrenner E, Weber E, Wissinger B, Biskup S, Stingl K, Kohl S. Genetic architecture
484 of inherited retinal degeneration in Germany: A large cohort study from a single
485 diagnostic center over a 9-year period. *Hum Mutat* 2020;41(9):1514-27.
- 486 10. Koyanagi Y, Akiyama M, Nishiguchi KM, Momozawa Y, Kamatani Y, Takata S, Inai C,
487 Iwasaki Y, Kumano M, Murakami Y, Omodaka K, Abe T, Komori S, Gao D, Hirakata
488 T, Kurata K, Hosono K, Ueno S, Hotta Y, Murakami A, Terasaki H, Wada Y,
489 Nakazawa T, Ishibashi T, Ikeda Y, Kubo M, Sonoda KH. Genetic characteristics of
490 retinitis pigmentosa in 1204 Japanese patients. *J Med Genet* 2019;56(10):662-70.
- 491 11. Gao FJ, Li JK, Chen H, Hu FY, Zhang SH, Qi YH, Xu P, Wang DD, Wang LS, Chang Q,
492 Zhang YJ, Liu W, Li W, Wang M, Chen F, Xu GZ, Wu JH. Genetic and Clinical
493 Findings in a Large Cohort of Chinese Patients with Suspected Retinitis Pigmentosa.
494 *Ophthalmology* 2019;126(11):1549-56.
- 495 12. Kim YJ, Kim YN, Yoon YH, Seo EJ, Seo GH, Keum C, Lee BH, Lee JY. Diverse Genetic
496 Landscape of Suspected Retinitis Pigmentosa in a Large Korean Cohort. *Genes*
497 *(Basel)* 2021;12(5)
- 498 13. Chen TC, Huang DS, Lin CW, Yang CH, Yang CM, Wang VY, Lin JW, Luo AC, Hu FR,
499 Chen PL. Genetic characteristics and epidemiology of inherited retinal degeneration
500 in Taiwan. *NPJ Genom Med* 2021;6(1):16.
- 501 14. Numa S, Oishi A, Higasa K, Oishi M, Miyata M, Hasegawa T, Ikeda HO, Otsuka Y,
502 Matsuda F, Tsujikawa A. EYS is a major gene involved in retinitis pigmentosa in
503 Japan: genetic landscapes revealed by stepwise genetic screening. *Sci Rep*
504 2020;10(1):20770.
- 505 15. Suga A, Yoshitake K, Minematsu N, Tsunoda K, Fujinami K, Miyake Y, Kuniyoshi K,
506 Hayashi T, Mizobuchi K, Ueno S, Terasaki H, Kominami T, Nao IN, Mawatari G,
507 Mizota A, Shinoda K, Kondo M, Kato K, Sekiryu T, Nakamura M, Kusuhara S,
508 Yamamoto H, Yamamoto S, Mochizuki K, Kondo H, Matsushita I, Kameya S,
509 Fukuchi T, Hatase T, Horiguchi M, Shimada Y, Tanikawa A, Yamamoto S, Miura G,
510 Ito N, Murakami A, Fujimaki T, Hotta Y, Tanaka K, Iwata T. Genetic characterization
511 of 1210 Japanese pedigrees with inherited retinal diseases by whole-exome
512 sequencing. *Hum Mutat* 2022;43(12):2251-64.
- 513 16. Maeda A, Yoshida A, Kawai K, Arai Y, Akiba R, Inaba A, Takagi S, Fujiki R, Hiramami Y,
514 Kurimoto Y, Ohara O, Takahashi M. Development of a molecular diagnostic test for
515 Retinitis Pigmentosa in the Japanese population. *Jpn J Ophthalmol* 2018;62(4):451-

- 516 57.
- 517 17. Richards S, Aziz N, Bale S, Bick D, Das S, Gastier-Foster J, Grody WW, Hegde M, Lyon
518 E, Spector E, Voelkerding K, Rehm HL. Standards and guidelines for the
519 interpretation of sequence variants: a joint consensus recommendation of the
520 American College of Medical Genetics and Genomics and the Association for
521 Molecular Pathology. *Genet Med* 2015;17(5):405-24.
- 522 18. Oza AM, DiStefano MT, Hemphill SE, Cushman BJ, Grant AR, Siegert RK, Shen J,
523 Chapin A, Boczek NJ, Schimmenti LA, Murry JB, Hasadsri L, Nara K, Kenna M,
524 Booth KT, Azaiez H, Griffith A, Avraham KB, Kremer H, Rehm HL, Amr SS, Abou
525 Tayoun AN. Expert specification of the ACMG/AMP variant interpretation
526 guidelines for genetic hearing loss. *Hum Mutat* 2018;39(11):1593-613.
- 527 19. Britten-Jones AC, Gocuk SA, Goh KL, Huq A, Edwards TL, Ayton LN. The Diagnostic
528 Yield of Next Generation Sequencing in Inherited Retinal Diseases: A Systematic
529 Review and Meta-analysis. *Am J Ophthalmol* 2023;249:57-73.
- 530 20. Hosono K, Ishigami C, Takahashi M, Park DH, Hiramami Y, Nakanishi H, Ueno S, Yokoi
531 T, Hikoya A, Fujita T, Zhao Y, Nishina S, Shin JP, Kim IT, Yamamoto S, Azuma N,
532 Terasaki H, Sato M, Kondo M, Minoshima S, Hotta Y. Two novel mutations in the
533 EYS gene are possible major causes of autosomal recessive retinitis pigmentosa in
534 the Japanese population. *PLoS One* 2012;7(2):e31036.
- 535 21. Iwanami M, Oshikawa M, Nishida T, Nakadomari S, Kato S. High prevalence of
536 mutations in the EYS gene in Japanese patients with autosomal recessive retinitis
537 pigmentosa. *Invest Ophthalmol Vis Sci* 2012;53(2):1033-40.
- 538 22. Fujinami KN, K. M.; Oishi, A.; Akiyama, M.; Ikeda, Y. Specification of Variant
539 Interpretation Guidelines for Inherited Retinal Dystrophy in Japan. *Jxiv* 2023
- 540 23. Momozawa Y, Akiyama M, Kamatani Y, Arakawa S, Yasuda M, Yoshida S, Oshima Y,
541 Mori R, Tanaka K, Mori K, Inoue S, Terasaki H, Yasuma T, Honda S, Miki A, Inoue
542 M, Fujisawa K, Takahashi K, Yasukawa T, Yanagi Y, Kadonosono K, Sonoda KH,
543 Ishibashi T, Takahashi A, Kubo M. Low-frequency coding variants in CETP and CFB
544 are associated with susceptibility of exudative age-related macular degeneration in
545 the Japanese population. *Hum Mol Genet* 2016;25(22):5027-34.
- 546 24. Nishiguchi KM, Fujita K, Ikeda Y, Kunikata H, Koyanagi Y, Akiyama M, Abe T, Wada
547 Y, Sonoda KH, Nakazawa T. A founder Alu insertion in RP1 gene in Japanese patients
548 with retinitis pigmentosa. *Jpn J Ophthalmol* 2020;64(4):346-50.

- 549 25. Wada Y, Itabashi T, Sato H, Kawamura M, Tada A, Tamai M. Screening for mutations in
550 CYP4V2 gene in Japanese patients with Bietti's crystalline corneoretinal dystrophy.
551 *Am J Ophthalmol* 2005;139(5):894-9.
- 552 26. Nikopoulos K, Cisarova K, Quinodoz M, Koskiniemi-Kuendig H, Miyake N, Farinelli P,
553 Rehman AU, Khan MI, Prunotto A, Akiyama M, Kamatani Y, Terao C, Miya F, Ikeda
554 Y, Ueno S, Fuse N, Murakami A, Wada Y, Terasaki H, Sonoda KH, Ishibashi T, Kubo
555 M, Cremers FPM, Kutalik Z, Matsumoto N, Nishiguchi KM, Nakazawa T, Rivolta C.
556 A frequent variant in the Japanese population determines quasi-Mendelian
557 inheritance of rare retinal ciliopathy. *Nat Commun* 2019;10(1):2884.
- 558 27. Won D, Hwang JY, Shim Y, Byeon SH, Lee J, Lee CS, Kim M, Lim HT, Choi JR, Lee
559 ST, Han J. In Silico identification of a common mobile element insertion in exon 4 of
560 RP1. *Sci Rep* 2021;11(1):13381.
- 561 28. de Bruijn SE, Fiorentino A, Ottaviani D, Fanucchi S, Melo US, Corral-Serrano JC,
562 Mulders T, Georgiou M, Rivolta C, Pontikos N, Arno G, Roberts L, Greenberg J,
563 Albert S, Gilissen C, Aben M, Rebello G, Mead S, Raymond FL, Corominas J, Smith
564 CEL, Kremer H, Downes S, Black GC, Webster AR, Inglehearn CF, van den Born LI,
565 Koenekoop RK, Michaelides M, Ramesar RS, Hoyng CB, Mundlos S, Mhlanga MM,
566 Cremers FPM, Cheetham ME, Roosing S, Hardcastle AJ. Structural Variants Create
567 New Topological-Associated Domains and Ectopic Retinal Enhancer-Gene Contact
568 in Dominant Retinitis Pigmentosa. *Am J Hum Genet* 2020;107(5):802-14.
- 569 29. Jin ZB, Mandai M, Homma K, Ishigami C, Hiramami Y, Nao IN, Takahashi M. Allelic copy
570 number variation in FSCN2 detected using allele-specific genotyping and multiplex
571 real-time PCRs. *Invest Ophthalmol Vis Sci* 2008;49(9):3799-805.
- 572 30. Zhang Q, Li S, Xiao X, Jia X, Guo X. The 208delG mutation in FSCN2 does not associate
573 with retinal degeneration in Chinese individuals. *Invest Ophthalmol Vis Sci*
574 2007;48(2):530-3.
- 575 31. Xiang J, Peng J, Baxter S, Peng Z. AutoPVS1: An automatic classification tool for PVS1
576 interpretation of null variants. *Hum Mutat* 2020;41(9):1488-98.
- 577 32. Lek M, Karczewski KJ, Minikel EV, Samocha KE, Banks E, Fennell T, O'Donnell-Luria
578 AH, Ware JS, Hill AJ, Cummings BB, Tukiainen T, Birnbaum DP, Kosmicki JA,
579 Duncan LE, Estrada K, Zhao F, Zou J, Pierce-Hoffman E, Berghout J, Cooper DN,
580 Deflaux N, DePristo M, Do R, Flannick J, Fromer M, Gauthier L, Goldstein J, Gupta
581 N, Howrigan D, Kiezun A, Kurki MI, Moonshine AL, Natarajan P, Orozco L, Peloso

- 582 GM, Poplin R, Rivas MA, Ruano-Rubio V, Rose SA, Ruderfer DM, Shakir K,
583 Stenson PD, Stevens C, Thomas BP, Tiao G, Tusie-Luna MT, Weisburd B, Won HH,
584 Yu D, Altshuler DM, Ardissino D, Boehnke M, Danesh J, Donnelly S, Elosua R,
585 Florez JC, Gabriel SB, Getz G, Glatt SJ, Hultman CM, Kathiresan S, Laakso M,
586 McCarroll S, McCarthy MI, McGovern D, McPherson R, Neale BM, Palotie A,
587 Purcell SM, Saleheen D, Scharf JM, Sklar P, Sullivan PF, Tuomilehto J, Tsuang MT,
588 Watkins HC, Wilson JG, Daly MJ, MacArthur DG. Analysis of protein-coding
589 genetic variation in 60,706 humans. *Nature* 2016;536(7616):285-91.
- 590 33. Zernant J, Collison FT, Lee W, Fishman GA, Noupou K, Yuan B, Cai C, Lupski JR,
591 Yannuzzi LA, Tsang SH, Allikmets R. Genetic and clinical analysis of ABCA4-
592 associated disease in African American patients. *Hum Mutat* 2014;35(10):1187-94.
- 593 34. Valverde D, Riveiro-Alvarez R, Bernal S, Jaakson K, Baiget M, Navarro R, Ayuso C.
594 Microarray-based mutation analysis of the ABCA4 gene in Spanish patients with
595 Stargardt disease: evidence of a prevalent mutated allele. *Mol Vis* 2006;12:902-8.
- 596 35. Lee W, Zernant J, Su PY, Nagasaki T, Tsang SH, Allikmets R. A genotype-phenotype
597 correlation matrix for ABCA4 disease based on long-term prognostic outcomes. *JCI*
598 *Insight* 2022;7(2)
- 599 36. Nishiguchi KM, Miya F, Mori Y, Fujita K, Akiyama M, Kamatani T, Koyanagi Y, Sato
600 K, Takigawa T, Ueno S, Tsugita M, Kunikata H, Cisarova K, Nishino J, Murakami A,
601 Abe T, Momozawa Y, Terasaki H, Wada Y, Sonoda KH, Rivolta C, Tsunoda T,
602 Tsujikawa M, Ikeda Y, Nakazawa T. A hypomorphic variant in EYS detected by
603 genome-wide association study contributes toward retinitis pigmentosa. *Commun*
604 *Biol* 2021;4(1):140.
- 605 37. Bowne SJ, Sullivan LS, Blanton SH, Cepko CL, Blackshaw S, Birch DG, Hughbanks-
606 Wheaton D, Heckenlively JR, Daiger SP. Mutations in the inosine monophosphate
607 dehydrogenase 1 gene (IMPDH1) cause the RP10 form of autosomal dominant
608 retinitis pigmentosa. *Hum Mol Genet* 2002;11(5):559-68.
- 609 38. Wang XT, Mion B, Aherne A, Engel PC. Molecular recruitment as a basis for negative
610 dominant inheritance? propagation of misfolding in oligomers of IMPDH1, the
611 mutated enzyme in the RP10 form of retinitis pigmentosa. *Biochim Biophys Acta*
612 2011;1812(11):1472-6.
- 613 39. Ioannidis NM, Rothstein JH, Pejaver V, Middha S, McDonnell SK, Baheti S, Musolf A,
614 Li Q, Holzinger E, Karyadi D, Cannon-Albright LA, Teerlink CC, Stanford JL, Isaacs

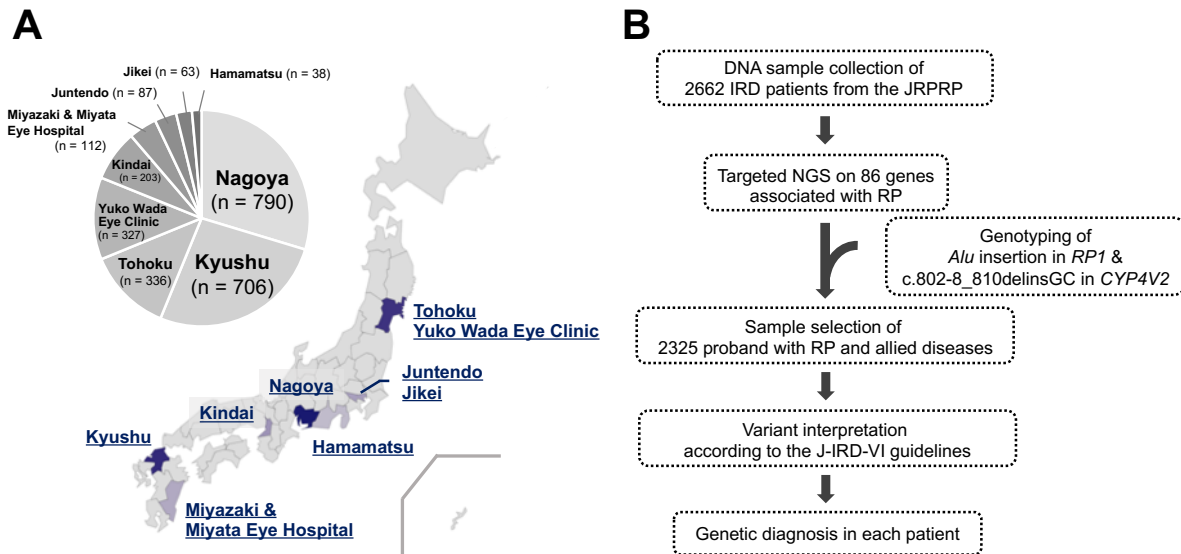
- 615 WB, Xu J, Cooney KA, Lange EM, Schleutker J, Carpten JD, Powell IJ, Cussenot O,
616 Cancel-Tassin G, Giles GG, MacInnis RJ, Maier C, Hsieh CL, Wiklund F, Catalona
617 WJ, Foulkes WD, Mandal D, Eeles RA, Kote-Jarai Z, Bustamante CD, Schaid DJ,
618 Hastie T, Ostrander EA, Bailey-Wilson JE, Radivojac P, Thibodeau SN, Whittemore
619 AS, Sieh W. REVEL: An Ensemble Method for Predicting the Pathogenicity of Rare
620 Missense Variants. *Am J Hum Genet* 2016;99(4):877-85.
- 621 40. Jaganathan K, Kyriazopoulou Panagiotopoulou S, McRae JF, Darbandi SF, Knowles D,
622 Li YI, Kosmicki JA, Arbelaez J, Cui W, Schwartz GB, Chow ED, Kanterakis E, Gao
623 H, Kia A, Batzoglou S, Sanders SJ, Farh KK. Predicting Splicing from Primary
624 Sequence with Deep Learning. *Cell* 2019;176(3):535-48.e24.
- 625 41. Hosono K, Nishina S, Yokoi T, Katagiri S, Saitsu H, Kurata K, Miyamichi D, Hikoya A,
626 Mizobuchi K, Nakano T, Minoshima S, Fukami M, Kondo H, Sato M, Hayashi T,
627 Azuma N, Hotta Y. Molecular Diagnosis of 34 Japanese Families with Leber
628 Congenital Amaurosis Using Targeted Next Generation Sequencing. *Sci Rep*
629 2018;8(1):8279.
- 630 42. Sano Y, Koyanagi Y, Wong JH, Murakami Y, Fujiwara K, Endo M, Aoi T, Hashimoto K,
631 Nakazawa T, Wada Y, Ueno S, Gao D, Murakami A, Hotta Y, Ikeda Y, Nishiguchi
632 KM, Momozawa Y, Sonoda KH, Akiyama M, Fujimoto A. Likely pathogenic
633 structural variants in genetically unsolved patients with retinitis pigmentosa revealed
634 by long-read sequencing. *J Med Genet* 2022;59(11):1133-38.
- 635 43. Khanna H, Davis EE, Murga-Zamalloa CA, Estrada-Cuzcano A, Lopez I, den Hollander
636 AI, Zonneveld MN, Othman MI, Waseem N, Chakarova CF, Maubaret C, Diaz-Font
637 A, MacDonald I, Muzny DM, Wheeler DA, Morgan M, Lewis LR, Logan CV, Tan
638 PL, Beer MA, Inglehearn CF, Lewis RA, Jacobson SG, Bergmann C, Beales PL,
639 Attié-Bitach T, Johnson CA, Otto EA, Bhattacharya SS, Hildebrandt F, Gibbs RA,
640 Koenekoop RK, Swaroop A, Katsanis N. A common allele in RPGRIP1L is a
641 modifier of retinal degeneration in ciliopathies. *Nat Genet* 2009;41(6):739-45.
- 642 44. Kajiwara K, Berson EL, Dryja TP. Digenic retinitis pigmentosa due to mutations at the
643 unlinked peripherin/RDS and ROM1 loci. *Science* 1994;264(5165):1604-8.
- 644 45. Katsanis N, Ansley SJ, Badano JL, Eichers ER, Lewis RA, Hoskins BE, Scambler PJ,
645 Davidson WS, Beales PL, Lupski JR. Triallelic inheritance in Bardet-Biedl syndrome,
646 a Mendelian recessive disorder. *Science* 2001;293(5538):2256-9.

647 **Figure, Table**

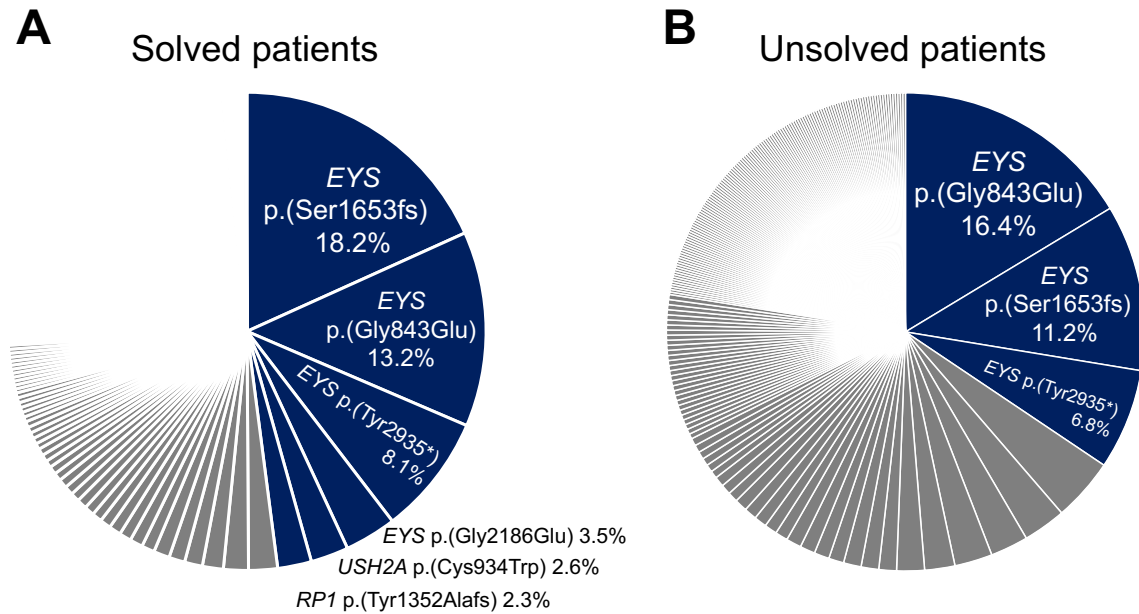
Table 1. Characteristics of 2325 Patients with RP and allied diseases

Diagnosis	RP	Usher syndrome	LCA	CRD	Choroideremia	BCD
Patients, n	2155	32	15	78	11	34
Sex (Male/Female)	1020/1135	12/20	6/9	46/32	11/0	9/25
Age, years	54.2 (4-93)	45.5 (10-80)	25.3 (3-57)	55.4 (3-84)	48.5 (3-84)	55.8 (27-82)
Visual acuity (logMAR), n (%)						
≤ 0.5	1302 (60.4)	19 (59.4)	2 (13.3)	20 (25.6)	9 (81.8)	20 (58.8)
0.5 <, ≤ 1.3	381 (17.7)	2 (6.3)	4 (26.7)	38 (48.7)	1 (9.1)	7 (20.6)
> 1.3	391 (18.1)	9 (28.1)	8 (53.3)	18 (23.1)	1 (9.1)	6 (17.6)
Unknown	81 (3.8)	2 (6.3)	1 (6.7)	2 (2.6)	0 (0)	1 (2.9)
Inheritance form, n (%)						
AD	284 (13.2)	0 (0)	0 (0)	9 (11.5)	0 (0)	2 (5.9)
AR	410 (19.0)	12 (37.5)	6 (40)	8 (10.3)	0 (0)	12 (35.3)
X linked	34 (1.6)	0 (0)	0 (0)	0 (0)	6 (54.5)	0 (0)
Sporadic	1182 (54.8)	16 (50)	9 (60)	59 (75.6)	3 (27.3)	19 (55.9)
Unknown	245 (11.4)	4 (12.5)	0 (0)	2 (2.6)	2 (18.2)	1 (2.9)
Consanguinity of patients, n (%)	152 (7.1)	2 (6.3)	8 (53.3)	4 (5.1)	0 (0)	3 (8.8)

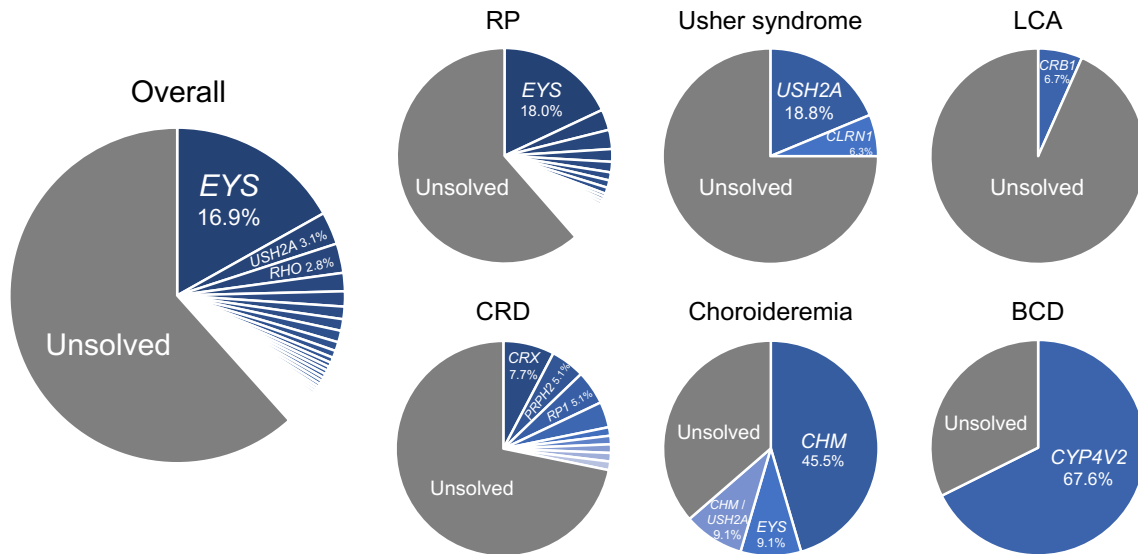
Visual acuity is derived from the right eye. The values of the decimal visual acuity were converted into the logarithm of the minimum angle of resolution (logMAR) units. The inheritance forms were determined based on clinical examination and interview. RP, retinitis pigmentosa; LCA, Leber congenital amaurosis; CRD, cone-rod dystrophy; BCD, Bietti crystalline dystrophy. AD, autosomal dominant; AR, autosomal recessive.



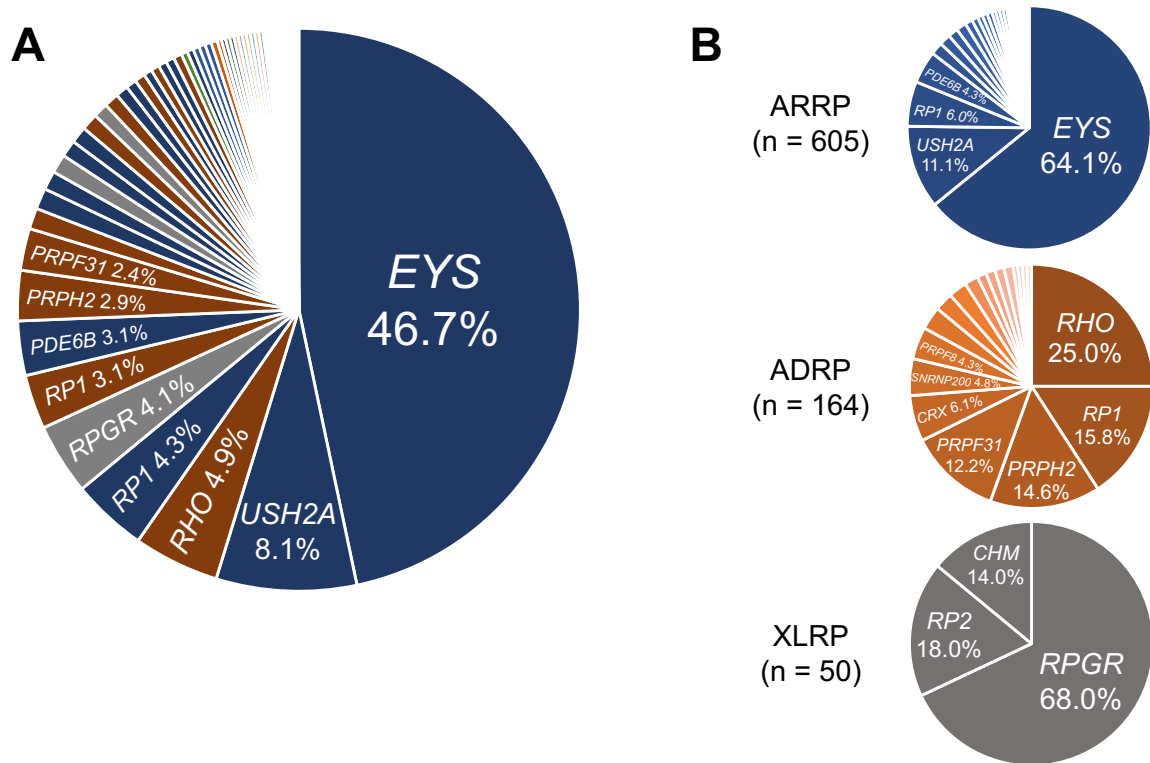
648 **Figure 1. Japanese facilities collecting IRD patients and workflow overview in this study.**
649 (A) The proportion of 2662 IRD patients from 9 facilities across Japan and their geographical
650 distribution. (B) The workflow following DNA sample collection. Nagoya, Nagoya
651 University Hospital; Kyushu, Kyushu University Hospital; Tohoku, Tohoku University
652 Hospital; Kindai, Kindai University Hospital; Miyazaki, University of Miyazaki Hospital;
653 Juntendo, Juntendo University Hospital; Jikei, the Jikei University Hospital; Hamamatsu,
654 Hamamatsu University Hospital; IRD, inherited retinal dystrophy; JRPRP, Japan Retinitis
655 Pigmentosa Registry Project; NGS, next-generation sequencing; RP, retinitis pigmentosa; J-
656 IRD-VI, Japanese inherited retinal dystrophy variant interpretation.



657 **Figure 2. High frequency pathogenic variants in solved and unsolved patients with RP.**
658 (A) The proportion of causative variants detected in solved patients with RP. A total of 1485
659 alleles of causative variants were detected in solved patients with RP. High-frequency
660 variants detected with more than 30 alleles are highlighted in the blue area. (B) The
661 proportion of pathogenic or likely pathogenic variants carried in unsolved patients with RP.
662 A total of 587 alleles of pathogenic or likely pathogenic variants were detected in unsolved
663 patients with RP. High-frequency variants detected with more than 30 alleles are
664 highlighted in the blue area. RP, retinitis pigmentosa.



665 **Figure 3. Percentage of solved patients and proportion of causative genes.**
666 The pie chart displays the overall and disease-specific diagnostic rates along with the
667 proportion of disease-causing genes. The blue area represents the proportion of genetically
668 solved patients whereas the grey area represents that of unsolved patients. RP, retinitis
669 pigmentosa; LCA, Leber congenital amaurosis; CRD, cone-rod dystrophy; BCD, Bietti
670 crystalline dystrophy.



671 **Figure 4. Proportion of causative genes in solved patients with RP.**

672 (A) The proportion of causative genes in solved patients with RP. The blue area represents
673 the proportion of AR genes, the brown area represents AD genes, and the grey area
674 represents X-linked genes. The green area represents multiple causative genes. (B) The
675 proportion of causative genes based on the inheritance pattern. The pie chart excludes 12
676 patients in whom multiple causative genes with different inheritance patterns were detected.
677 AD, autosomal dominant; AR, autosomal recessive; n, number of patients; RP, retinitis
678 pigmentosa.