

1 **A loss-of-function CCR2 variant is associated with lower cardiovascular risk**

2

3 Marios K. Georgakis, MD, PhD*¹⁻³, Rainer Malik, PhD*¹, Omar El Bounkari, PhD¹, Natalie R.
4 Hasbani, MPH⁴, Jiang Li MD, PhD⁵, Jennifer E. Huffman, PhD⁶, Gabrielle Shakt^{7,8}, Reinier W. P.
5 Tack, MD^{2,9}, Tamara N. Kimball, MD^{2,10}, Yaw Asare, PhD¹, Alanna C. Morrison, PhD⁴, BS, Noah
6 L. Tsao, BS^{7,8}, Renae Judy, MS^{7,8}, Braxton D. Mitchell, PhD^{11,12}, Huichun Xu, MD, PhD¹¹, May E.
7 Montasser, PhD¹¹, Ron Do, PhD^{13,14}, Eimear E. Kenny^{13,15-17}, Ruth J.F. Loos, PhD¹³, James G.
8 Terry, MS¹⁸, John Jeffrey Carr, MD¹⁸, Joshua C. Bis, PhD¹⁹, Bruce M. Psaty, MD, PhD¹⁹⁻²¹, W. T.
9 Longstreth, MD, MPH^{21,22}, Kendra A Young, MSPH, PhD²³, Sharon M Lutz, PhD^{24,25}, Michael H
10 Cho, MD, MPH²⁶, Jai Broome, BA²⁷, Alyna T. Khan²⁷, Fei Fei Wang, BS²⁷, Nancy Heard-Costa,
11 PhD^{28,29}, Sudha Seshadri, MD³⁰, Ramachandran S. Vasan, MD^{28,29,31}, Nicholette D. Palmer,
12 PhD³², Barry I. Freedman, MD³³, Donald W. Bowden, PhD³², Lisa R. Yanek, MPH³⁴, Brian G. Kral,
13 MD, MPH³⁴, Lewis C. Becker, MD³⁴, Patricia A. Peyser, PhD³⁵, Lawrence F. Bielak, DDS, MPH³⁵,
14 Farah Ammous, PhD³⁵, April P. Carson, PhD, MSPH³⁶, Michael E. Hall, MD, MS³⁶, Laura M.
15 Raffield, PhD³⁷, Stephen S. Rich, PhD³⁸, Wendy S. Post, MD³⁹, Russel P. Tracy, PhD⁴⁰, Kent D.
16 Taylor, PhD⁴¹, Xiuqing Guo, PhD⁴¹, Michael C. Mahaney, PhD⁴², Joanne E. Curran, PhD⁴², John
17 Blangero, PhD⁴², Shoa L. Clarke, MD, PhD⁴³⁻⁴⁵, Jeffrey W. Haessler, MS⁴⁶, Yao Hu, PhD⁴⁶,
18 Themistocles L. Assimes, MS, PhD⁴³⁻⁴⁵, Charles Kooperberg, PhD⁴⁶, Jürgen Bernhagen,
19 PhD^{1,3,51}, Christopher D. Anderson, MD, MMSc^{2,9,10}, Scott M. Damrauer, MD^{7,8,47}, Ramin Zand
20 MD, MPH^{48,49}, Jerome I. Rotter, MD⁴¹, Paul S. de Vries, PhD⁴, Martin Dichgans, MD^{1,3,50,51}

21

22 ¹ Institute for Stroke and Dementia Research (ISD), University Hospital, Ludwig-Maximilians-
23 University (LMU), Munich, Germany

24 ² Program in Medical and Population Genetics, Broad Institute of MIT and Harvard, Cambridge,
25 MA, USA

26 ³ Munich Cluster for Systems Neurology (SyNergy), Munich, Germany.

27 ⁴ Human Genetics Center, Department of Epidemiology, Human Genetics, and Environmental
28 Sciences, School of Public Health, The University of Texas Health Science Center at Houston,
29 Houston, TX, USA

30 ⁵ Department of Molecular and Functional Genomics, Geisinger Health System, Danville,
31 Pennsylvania, USA

32 ⁶ Veterans Affairs Healthcare System, Boston, MA, USA

33 ⁷ Department of Surgery, Perelman School of Medicine at the University of Pennsylvania,
34 Philadelphia, PA, USA

35 ⁸ Corporal Michael Crescenz VA Medical Center, Philadelphia, PA, USA

36 ⁹ Center for Genomic Medicine, Massachusetts General Hospital, Boston, MA, USA
37 ¹⁰ Department of Neurology, Brigham and Women's Hospital, Boston, MA, USA
38 ¹¹ Department of Medicine, University of Maryland School of Medicine, Baltimore, MD
39 ¹² Geriatrics Research and Education Clinical Center, Baltimore Veterans Administration Medical
40 Center, Baltimore, MD
41 ¹³ The Charles Bronfman Institute for Personalized Medicine, Icahn School of Medicine at Mount
42 Sinai, New York, NY, USA
43 ¹⁴ Department of Genetics and Genomic Sciences, Icahn School of Medicine at Mount Sinai, New
44 York, NY, USA
45 ¹⁵ The Center for Genomic Health, Icahn School of Medicine at Mount Sinai, New York, NY, USA
46 ¹⁶ Pamela Sklar Division of Psychiatric Genomics, Icahn School of Medicine at Mount Sinai, New
47 York, NY, USA
48 ¹⁷ Department of Medicine, Icahn School of Medicine at Mount Sinai, New York, NY, USA
49 ¹⁸ Department of Radiology, Vanderbilt University Medical Center, Nashville, TN, USA
50 ¹⁹ Cardiovascular Health Research Unit, Department of Medicine, University of Washington,
51 Seattle, WA, USA
52 ²⁰ Department of Health Systems and Population Health, University of Washington, Seattle, WA,
53 USA
54 ²¹ Department of Epidemiology, University of Washington, Seattle, WA, USA
55 ²² Department of Neurology, University of Washington, Seattle, WA, USA
56 ²³ Department of Epidemiology, University of Colorado Anschutz Medical Campus, Aurora CO,
57 USA
58 ²⁴ Department of Population Medicine, PReCiSiOn Medicine Translational Research (PROMoTeR)
59 Center, Harvard Pilgrim Health Care and Harvard Medical School, Boston, MA, USA
60 ²⁵ Department of Biostatistics, T.H. Chan School of Public Health, Harvard University, Boston,
61 MA, USA
62 ²⁶ Channing Division of Network Medicine, Brigham and Women's Hospital, Harvard Medical
63 School, Boston, MA, USA
64 ²⁷ Department of Biostatistics, University of Washington, Seattle, WA, USA
65 ²⁸ Department of Medicine, Boston University School of Medicine, Boston, MA, USA
66 ²⁹ Boston University and National Heart, Lung, and Blood Institute's Framingham Heart Study,
67 Framingham, MA, USA
68 ³⁰ Bigg's Institute for Alzheimer's Disease and neurodegenerative disorders, University of Texas
69 Health Science Center, San Antonio, TX, USA
70 ³¹ Department of Epidemiology, Boston University School of Public Health, Boston, MA, USA

71 ³² Department of Biochemistry, Wake Forest School of Medicine, Winston-Salem, NC, USA
72 ³³ Section on Nephrology, Department of Internal Medicine, Wake Forest School of Medicine,
73 Winston-Salem, NC, USA
74 ³⁴ Department of Medicine, Johns Hopkins University School of Medicine, Baltimore, MD, USA
75 ³⁵ Department of Epidemiology, School of Public Health, University of Michigan, Ann Arbor, MI,
76 USA
77 ³⁶ Department of Medicine, University of Mississippi Medical Center, Jackson, MS
78 ³⁷ Department of Genetics, University of North Carolina at Chapel Hill, Chapel Hill, NC
79 ³⁸ Center for Public Health Genomics, University of Virginia, Charlottesville, VA USA
80 ³⁹ Johns Hopkins Bloomberg School of Public Health, Johns Hopkins School of Medicine,
81 Baltimore, MD USA
82 ⁴⁰ Departments of Pathology & Laboratory Medicine, and Biochemistry, Larner College of
83 Medicine, University of Vermont, Burlington, VT USA
84 ⁴¹ The Institute for Translational Genomics and Population Sciences, Department of Pediatrics,
85 The Lundquist Institute for Biomedical Innovation at Harbor-UCLA Medical Center, Torrance, CA
86 USA
87 ⁴² Department of Human Genetics and South Texas Diabetes and Obesity Institute, University of
88 Texas Rio Grande Valley School of Medicine, Brownsville TX USA
89 ⁴³ Department of Medicine (Division of Cardiovascular Medicine), Stanford University School of
90 Medicine, Stanford, CA, USA
91 ⁴⁴ Stanford Cardiovascular Institute, Stanford, CA, USA
92 ⁴⁵ VA Palo Alto Health Care System, Palo Alto, CA, USA
93 ⁴⁶ Division of Public Health Sciences, Fred Hutchinson Cancer Center, Seattle WA 98109 USA
94 ⁴⁷ Department of Genetics, Perelman School of Medicine at the University of Pennsylvania,
95 Philadelphia, PA, USA
96 ⁴⁸ Department of Neurology, Pennsylvania State University, Hershey, Pennsylvania, USA.
97 ⁴⁹ Department of Neurology, Neuroscience Institute, Geisinger Health System, Danville, PA, USA
98 ⁵⁰ German Centre for Neurodegenerative Diseases (DZNE), Munich, Germany
99 ⁵¹ German Centre for Cardiovascular Research (DZHK, Munich), partner site Munich Heart
100 Alliance, Munich, Germany

101
102 *equally contributed

103
104
105

106 **Address for Correspondence:**

Marios K. Georgakis, MD, PhD
Clinician-Scientist

E-mail: marios.georgakis@med.uni-muenchen.de;
mgeorgak@broadinstitute.org

Tel: +49-89-4400-46156

Martin Dichgans, MD
Director

E-mail: martin.dichgans@med.uni-muenchen.de

Tel: +49-89-4400-46019

Institute for Stroke and Dementia Research, Ludwig-Maximilians-University Hospital
Feodor-Lynen-Str. 17, 81377 Munich, Germany

107

108

109 **ABSTRACT**

110

111 **Background and Aims:** Ample evidence links CCL2, a key chemokine governing monocyte
112 trafficking, with atherosclerosis. However, it remains unknown whether targeting the CCL2
113 receptor CCR2 could provide protection against cardiovascular disease.

114 **Methods:** **Computationally predicted** damaging (REVEL>0.5) variants within *CCR2* were
115 detected in whole-exome-sequencing data from 454,775 UK Biobank participants and tested for
116 association with cardiovascular endpoints in gene-burden tests. **Given the key role of CCR2 in**
117 **monocyte mobilization, variants associated with lower monocyte count were prioritized for**
118 **experimental validation. The response to CCL2 of human cells transfected with these variants**
119 **was tested in migration and cAMP assays. Validated loss-of-function variants were tested for**
120 **association with cardiovascular endpoints, atherosclerosis burden, and vascular risk factors.**
121 **Significant associations were replicated in six independent datasets (n=1,062,595).**

122 **Results:** **Carriers of 45 predicted damaging CCR2 variants were at lower risk of myocardial**
123 **infarction and coronary artery disease. One of these variants (M249K) was associated with lower**
124 **monocyte count and decreased signaling and chemoattraction in response to CCL2. While**
125 **M249K showed no association with conventional vascular risk factors, it was consistently**
126 **associated with a lower risk of myocardial infarction (Odds Ratio: 0.66 95% Confidence Interval:**
127 **0.54-0.81, p=6.1x10⁻⁵) and coronary artery disease(Odds Ratio: 0.74 95% Confidence Interval:**
128 **0.62-0.87, p=2.9x10⁻⁴) in the UK Biobank and in six replication cohorts. In a phenome-wide**
129 **association study, there was no evidence of higher infections risk among M249K carriers.**

130 **Conclusions:** **Carriers of an experimentally confirmed loss-of-function CCR2 variant are at a**
131 **lower lifetime risk of myocardial infarction and coronary artery disease without carrying a higher**
132 **infection risk. Our findings provide genetic support for the translational potential of CCR2-targeting**
133 **as an atheroprotective approach.**

134 **INTRODUCTION**

135 Atherosclerotic cardiovascular disease (CVD) is the leading cause of morbidity and mortality
136 worldwide.¹⁻³ Over 20 years of preclinical research have provided overwhelming evidence for a
137 causal role of inflammation in atherogenesis^{4,5} and recent trials provided proof-of-concept that
138 targeting inflammation can lead to reductions in adverse cardiovascular events.⁶⁻⁸ The
139 canakinumab anti-inflammatory thrombosis outcome study (CANTOS) demonstrated that
140 treatment with a monoclonal antibody against IL-1 β lowers risk of recurrent vascular events
141 among individuals with recent myocardial infarction.⁶ The colchicine cardiovascular outcomes trial
142 (COLCOT)⁷ and the low-dose colchicine-2 (LoDoCo2) trial⁸ further showed that colchicine, an
143 established drug with widespread inhibitory effects on inflammatory pathways,^{9,10} lowers the risk
144 of recurrent vascular events in patients with coronary artery disease (CAD). Targeting
145 inflammation for atheroprotection must be balanced against the impact on any host defense
146 responses. For example, both canakinumab⁶ and colchicine⁷ were associated with adverse
147 effects including fatal infections in the CANTOS and the colchicine trials. While translational
148 efforts have mostly focused on the inflammasome-IL-1 β /IL-6 axis,¹¹ evidence from preclinical
149 studies and early-phase clinical trials highlights the promise of alternative cytokines⁵ for the
150 development of a second generation of atherosclerosis-centered anti-inflammatory treatments.⁴

151 CC-motif chemokine ligand 2 (CCL2) is a pivotal inflammatory chemokine regulating monocyte
152 trafficking¹² that has been studied as a potential target in atherosclerosis. **Preclinical data suggest**
153 **that pharmacological targeting of CCL2 or its receptor CCR2 might lower atherosclerosis burden**
154 **in experimental models.**¹³ However, only recently large-scale genetic and epidemiological studies
155 have highlighted the relevance of the CCL2/CCR2 pathway in human CVD, calling for clinical
156 translation of strategies targeting this pathway.¹⁴ **Prospective observational studies^{15,16} support**
157 **associations of higher circulating CCL2 levels with ischemic stroke and cardiovascular death,**
158 **whereas Mendelian randomization analyses from population genetic studies^{17,18} show**
159 **associations with higher risk of ischemic stroke and coronary artery disease.** Furthermore, CCL2
160 levels are higher in atherosclerotic lesions from patients with symptomatic carotid stenosis, as
161 compared to asymptomatic disease and are associated with features of plaque vulnerability.¹⁹

162 Although these studies support a role of the CCL2/CCR2 axis in human atherosclerosis, it remains
163 unclear whether pharmacological intervention in this pathway could lead to atheroprotection in
164 humans. Several molecules targeting CCR2 are currently under development for autoimmune
165 disease, liver disease, and cancer and could be repurposed for prevention of atherosclerotic
166 cardiovascular disease.¹⁴ Studies examining the phenotypic effects of rare genetic variants in
167 population-based studies have been instrumental in predicting the consequences of

168 pharmacological interventions²⁰⁻²⁴ and might thus serve as a validation step for drug targets under
169 development.

170 Here, we leveraged whole-exome sequencing (WES) data from 454,775 participants of the
171 population-based UK Biobank (UKB) study to explore whether rare loss-of-function (LoF) variants
172 in the *CCR2* gene are associated with cardiovascular disease risk, burden of atherosclerosis, and
173 traditional vascular risk biomarkers. We experimentally confirmed the loss-of-function effects of
174 one variant (M249K) with a frequency of 0.1% and replicated its effects on cardiovascular risk in
175 external population- and hospital-based biobanks. Finally, we performed a phenome-wide
176 association study across two biobanks to explore associations of this damaging variant with the
177 risk of infections or other potential safety signals of any *CCR2*-targeting treatments.

178

179 **METHODS**

180 **Study population**

181 We used data from the UKB, a population-based prospective cohort study of UK residents aged
182 40-69 years recruited between 2006-2010 from 22 assessment centers across the UK.²⁵ This
183 analysis was restricted to 454,775 out of 502,419 participants with available whole-exome
184 sequencing data (UKB Exome 450k release from October 2021). Primary and secondary
185 analyses were performed with an updated Functional Equivalence (FE) protocol that retains
186 original quality scores in the CRAM files (referred to as the OQFE protocol). We included only
187 variants that met published criteria²⁶: individual and variant missingness <10%, Hardy Weinberg
188 Equilibrium p -value $>10^{-15}$, minimum read coverage depth of 7 for SNPs and 10 for indels, at least
189 one sample per site passed the allele balance threshold >0.15 for SNPs and 0.20 for indels. We
190 used genotype array data released by the UKB study to assign individuals to continental ancestry
191 super-groups (African (AFR), Hispanic or Latin American (HLA, originally referred to as 'AMR' by
192 the 1000 Genomes Project), East Asian (EAS), European (EUR) and South Asian (SAS)) by
193 projecting each sample onto reference principal components (PCs) calculated from the 1000
194 Genomes reference panel. In brief, we merged our samples with all 1000 Genomes samples and
195 kept only SNPs with MAF $>10\%$, genotype missingness $<5\%$, and Hardy–Weinberg equilibrium
196 test $P < 10^{-5}$ that were common between the two datasets. Following pruning to approximately
197 200,000 independent variants, we calculated PCs for the 1000 Genomes samples using
198 flashpca²⁷ and projected each of the UKB samples onto those PCs. To assign a continental
199 ancestry group to each non-1000 Genomes sample, we trained a random forest model using the
200 1000 Genomes PCs and calculated the likelihood of a given sample belonging to each of the five
201 continental ancestry groups. When the likelihood for a given ancestry group was >0.9 , the sample

202 was assigned to that ancestry group. Otherwise, the sample was put into the group
203 “other/admixed”. We included only individuals without evidence of relatedness within the UKB
204 samples, as defined by a KING cut-off of <0.084.

205

206 **Detection of loss-of-function genetic variants in *CCR2* and experimental validation**

207 Restricting our analyses to the *CCR2* gene, we detected predicted LoF or damaging missense
208 variants with a MAF<1% in the *CCR2* exonic region and then explored which of those are
209 associated with monocyte count as a functional readout. Variants from WES were annotated as
210 previously described²⁸ using VEP v101.^{29,30} We used the LofTee plugin for predicting LoF
211 variants³¹ and a REVEL cutoff of >0.5 from dbNSFP version 4.0a for predicted damaging
212 missense mutations.

213 We aimed to further restrict our analyses to damaging variants with proven functional effects. One
214 of the key functions of the CCL2 axis is the recruitment of classical monocytes from the bone
215 marrow to the circulation in a *CCR2*-dependent way.³²⁻³⁴ Consequently, damaging variants in the
216 *CCR2* gene would be expected to be associated with a lower monocyte count in the circulation.
217 To test associations with the circulating counts of monocytes and other white blood cells (WBC),
218 absolute counts were extracted from the UKB fields 30160 (basophil counts), 30150 (eosinophil
219 counts), 30130 (monocyte counts), 30120 (lymphocyte counts) and 30140 (neutrophil counts).
220 Distributions were visually checked for normal distribution and log-normalized when needed.
221 Associations were tested using regenie v2.2.4.³⁵ For WBC analyses, we used sex, age at blood
222 draw, and the first 5 ancestral PCs as covariates. The mixed model parameters were estimated
223 using 200,000 genotyped common variants. Saddle point approximation regression was applied.
224 Genetic variants associated with monocyte count at a false discovery rate (FDR)-corrected p-
225 value <0.05 were prioritized for further experimental validation. To test whether the associations
226 are specific for monocyte count, we also tested associations with other WBC counts (basophils,
227 eosinophils, lymphocytes, neutrophils) for each variant.

228 Two predicted damaging *CCR2* variants showing a significant association with lower monocyte
229 count were brought forward to experimental testing. The two variants were M249K
230 (3:46358273:T:A) and W165S (3:46358021:G:C, both hg38). First, we tested how human *CCR2*-
231 knockout monocytic THP-1 cells transfected with these variants or wild-type *CCR2* respond to
232 chemoattraction by CCL2 using a Transwell migration assay (details in **Supplementary**
233 **Methods**). Next, we tested whether M249K-mutant *CCR2* (which showed an effect in the
234 migration assay) influences cAMP production in response to CCL2 in transfected human
235 HEK293T cells (details in **Supplementary Methods**).

236 **Associations with cardiovascular risk, atherosclerosis burden and vascular risk factors**

237 Focusing on two sets of variants, we then explored associations of CCR2 variants with clinical
238 cardiovascular endpoints including myocardial infarction, coronary artery disease, acute ischemic
239 stroke, peripheral artery disease, and abdominal aortic aneurysm using ICD-10- and ICD-9-
240 coded diagnoses, OPCS4-coded procedures, self-report, and algorithmically-defined phenotypes
241 provided by the UKB as detailed in **Supplementary Table S1**. As our hypothesis was that these
242 variants would lead to reductions in risk by lowering the lifetime burden of atherosclerosis, we
243 also constructed a combined phenotype of atherosclerosis manifestations in four vascular beds
244 (coronary arteries, cerebrovascular system, peripheral arteries of the extremities, and aortic
245 atherosclerosis). Severe atherosclerosis was defined as presence of clinical manifestations in at
246 least two vascular beds (**Supplementary Table S1**).

247 We followed two approaches to test associations with these phenotypes: (i) we performed a
248 burden test combining all predicted damaging variants (LoF or REVEL >0.5) within CCR2; (ii)
249 focusing on M249K, the only monocyte-lowering CCR2 variant that was experimentally validated
250 in the migration and cAMP assays, we performed logistic regression analysis adjusted for age,
251 sex, and the first 5 ancestral PCs testing. We included both prevalent and incident endpoints as
252 outcomes in all analyses and used Firth's correction for unbalanced case/control ratios in our
253 logistic regression analysis. To explore whether the associations with cardiovascular risk are
254 mediated through known vascular risk factors, we further tested associations of the damaging
255 genetic variants with the following phenotypes: systolic and diastolic blood pressure, circulating
256 LDL and HDL cholesterol, circulating apolipoprotein B levels, circulating glycated hemoglobin A1c
257 (HbA1c) concentration, body mass index, and C-reactive protein. Individuals under
258 antihypertensive medications were excluded in the analyses for systolic and diastolic blood
259 pressure, individuals under lipid-lowering medications were excluded from the analyses for LDL
260 and HDL cholesterol and apolipoprotein B levels, and individuals under glucose-lowering
261 treatments were excluded from the analyses for HbA1c.

262

263 **Validation of M249K CCR2 variant in external datasets and meta-analysis**

264 For external validation, we obtained summary statistics from six different data sources based on
265 a pre-defined protocol: the TransOmics and Precision Medicine Program supported by NHLBI
266 (TOPMed) Program including multiple studies and a trans-ancestry population in the US
267 (n=51,732), the population-based deCODE dataset in Iceland (n=345,992), the hospital-based
268 Penn Medicine Biobank (PMBB, n=43,721), the Million Veteran Programme (MVP, n=438,905),
269 the Geisinger DiscovEHR-MyCode cohort in central and northeastern Pennsylvania (n=145,826),

270 as well as the hospital-based Mass General Brigham Biobank (MGBB, n=36,419). Specifically,
271 we requested data from logistic regression models adjusted for age, sex, race, study-specific
272 variables (e.g. sequencing center) and the first 10 PCs (with the Firth's correction) for the M249K
273 variant. The variant was either assessed by sequencing or directly genotyped in all cohorts.
274 Details about the individual cohorts are provided in **Supplementary Methods**. The derived odds
275 ratios (OR) from the six datasets were meta-analyzed using fixed-effects and random-effects
276 meta-analyses and were subsequently also meta-analyzed with the results from the UKB. We set
277 a significance threshold of $p < 0.05$ in the replication meta-analysis. Heterogeneity was assessed
278 with the I^2 and the Cochran Q statistic.

279

280 **Phenome-wide association study**

281 To explore potential adverse effects associated with damaging *CCR2* genetic variants, we tested
282 associations of M249K with the full range of clinical phenotypes encoded in the UKB and
283 replicated in an external cohort (Geisinger DiscovEHR-MyCode). We used the Phecode Map 1.2
284 to map UKB ICD10-codes to Phecodes³⁶ using all ICD10 codes (main position, secondary
285 position, death records) from the UKB. We excluded Phecodes with <100 cases and Phecodes
286 that are male- or female-specific. Individuals were assigned a case status if >1 ICD10 code was
287 mapped to the respective Phecode. To approximate effect size in a logistic regression framework,
288 we used minor allele carrier status as an independent variable and age at baseline, sex and 5
289 ancestry PCs as covariates. We used Firth's correction for unbalanced case/control ratios in our
290 logistic regression analysis for all results with $p < 0.05$. The results from the two cohorts were meta-
291 analyzed using fixed- and random-effects models. Heterogeneity was assessed with the I^2 and
292 the Cochran Q statistic.

293

294 **Ethics and data availability**

295 All studies have received ethical approvals from the respective ethical authorities and participants
296 in all studies have provided written informed consent. Data from the UKB are available upon
297 submission and approval of a research proposal. The UKB has institutional review board approval
298 from the Northwest Multi-Center Research Ethics Committee (Manchester, UK). We accessed
299 the data following approval of an application by the UKB Ethics and Governance Council
300 (Application No. 36993 and 2532). Summary results from the external cohorts were obtained
301 following a common pre-defined research protocol to principal investigators of the study and are
302 presented in the figures and supplementary tables. deCODE has been approved by the National

303 Bioethics Committee of Iceland, and the study was conducted in agreement with conditions issued
304 by the Data Protection Authority of Iceland (VSN_14-015). All common research protocols for the
305 TOPMed Program have been approved by the institutional review board at the University of
306 Maryland Baltimore, whereas individual participating studies have obtained ethical approval from
307 their local ethical authorities, as described previously.³⁷ The Penn Medicine BioBank is approved
308 by the University of Pennsylvania, MVP by the Veterans Affairs Central Institutional Review
309 Board, the Geisinger DiscovEHR-MyCode cohort by Geisinger Institutional Review Boards, and
310 MGBB by the Ethics Committee of Mass General Brigham.

311

312 RESULTS

313 **Computationally predicted loss-of-function and damaging CCR2 variants**

314 Among 428,191 unrelated (out of 454,775 with whole-exome sequencing data) UK Biobank
315 participants from the whole-exome sequencing data release, we found a total of 45 predicted LoF
316 or damaging (REVEL>0.5) variants in the **exonic region** of the *CCR2* gene distributed across 787
317 heterozygous carriers (frequency 0.18%, **Figure 1** and **Supplementary Table S2**). There was no
318 homozygous carrier of any of these variants and variants were predominantly prevalent in
319 individuals of European ancestry (779 carriers, frequency 0.20%), as compared to individuals of
320 African, Hispanic or Latin American, East Asian, and South Asian ancestry (total of 8 carriers,
321 pooled frequency 0.02%). Due to the very low frequency in other ancestries, we restricted our
322 analyses to individuals of European ancestry (n=393,416), Baseline characteristics of the study
323 population are presented in **Supplementary Table S3**.

324

325 **Associations of CCR2 variants with cardiovascular endpoints in gene-burden tests**

326 **In a discovery analysis including all 45 computationally predicted LoF or damaging variants, we**
327 **next explored whether genetic variation in CCR2 is associated with atherosclerotic disease using**
328 **a gene-based burden test.** We found nominally significant associations of the predicted damaging
329 *CCR2* variants with myocardial infarction (OR: 0.60, 95%CI: 0.40-0.90, p=0.008) and coronary
330 artery disease (OR: 0.76, 95%CI: 0.59-0.99, p=0.03), as well as directionally consistent
331 associations with the odds of all other examined outcomes (ischemic stroke, peripheral artery
332 disease, abdominal aortic aneurysm, **Figure 2A**). **Variant burden** was associated with lower risk
333 of a combined atherosclerotic endpoint (OR: 0.80, 95%CI: 0.65-0.98, p=0.03), as well as with
334 severe atherosclerotic disease, defined by clinical manifestations in at least two vascular beds
335 (OR: 0.24, 95%CI: 0.07-0.82 p=0.003; **Figure 2B**). We found a trend for a dose-response pattern

336 with lower frequency of clinically manifest atherosclerotic disease across the number of vascular
337 beds involved among carriers for these *CCR2* variants (frequency of atherosclerosis presence
338 among carriers vs. non-carriers: in no vascular bed 88.0% vs. 90.7%; in 1 vascular bed 10.5% vs.
339 9.1%; in 2 vascular beds 1.2% vs. 0.3%; in 3 vascular beds 0.3% vs 0.1%, in 4 vascular beds
340 0.03% vs 0%; OR from ordinal regression: 0.74, 95%CI: 0.54-0.97, $p=0.01$).

341

342 **Functional consequences of *CCR2* damaging variants**

343 To move beyond computationally predicted functional effects, we followed a two-step approach
344 to select *CCR2* variants with functional relevance. Since one of the key functions of CCL2 is the
345 *CCR2*-dependent recruitment of classical monocytes from the bone marrow to the circulation, we
346 first tested the association of the predicted damaging variants in *CCR2* with circulating monocyte
347 counts. We found two variants (M249K and W165S) to be associated with lower monocyte counts
348 (FDR-corrected $p<0.05$, **Supplementary Table S2**) and prioritized them for experimental
349 validation.

350 We tested whether transfection of human *CCR2*-knockout THP-1 monocytes with either of these
351 two variants influences directed migration towards CCL2 in a trans-migration cell assay. Cells
352 transfected with M249K showed a clearly reduced response to CCL2, when compared to cells
353 transfected with wild-type *CCR2*, resembling the response of *CCR2*-knockout cells (**Figure 3A**
354 and **Supplementary Figure S1**). Cells transfected with W165S showed a profile similar to cells
355 transfected with wild-type *CCR2* (**Supplementary Figure S1**). HEK293T cells transfected with
356 M249K further showed a profound reduction of cAMP production in response to CCL2, when
357 compared to HEK293T cells transfected with wild-type *CCR2* (**Figure 3B**).

358 M249K has a frequency of 0.15% among UKB participants of European ancestry and leads to the
359 replacement of methionine by lysine in the sixth transmembrane domain of the *CCR2* receptor
360 (**Figure 1**). Confirming the specificity of the consequences of M249K on monocyte recruitment,
361 we found no evidence of associations with any of the other leukocyte type counts in the UKB
362 (**Figure 3C**).

363

364 **Associations of M249K with cardiovascular risk and replication in external cohorts**

365 Carriers of the M249K variant were at lower risk of myocardial infarction (OR: 0.62 95%CI: 0.40-
366 0.97, $p=0.03$) and coronary artery disease (OR: 0.73 95%CI: 0.56-0.97, $p=0.02$) in the UKB
367 (**Figure 4A**). As expected, given that M249K was by far the most frequent among computationally
368 predicted damaging *CCR2* variants, we found associations with a lower risk of the combined

369 atherosclerosis endpoint, as well as significantly lower risk of severe atherosclerosis
370 (manifestations in ≥ 2 vascular beds, **Figure 4B**), similar to the burden test. To explore whether
371 the effects of M249K are mediated through effects on risk factors targeted by current preventive
372 approaches, we next tested associations with established biomarkers of vascular risk. We found
373 no associations with any of the tested vascular risk factors including blood pressure,
374 hyperglycemia, or circulating lipids. Furthermore, there was no evidence of association with the
375 levels of the known inflammatory biomarker C-reactive protein, thus suggesting that the effects
376 might be independent of factors targeted by current atheroprotective anti-inflammatory treatments
377 (**Figure 4C**).

378 As these associations were only nominally significant and suggestive of an effect of this variant,
379 we aimed to externally replicate our findings to provide robust evidence for an association with a
380 lower risk of myocardial infarction and coronary artery disease. To externally replicate the effects
381 of M249K, we meta-analyzed data from six external datasets (TOPMed, deCODE, PMBB, MGB,
382 MVP, Geisinger). The frequency of the variant varied between the six datasets (range: 0.0006%
383 in MVP to 0.228% in Geisinger), totaling 767 heterozygous carriers among 1,062,595 individuals
384 (91,420 myocardial infarction and 142,361 coronary artery disease cases). When meta-analyzing
385 data from the six cohorts for the association between carrying M249K and risk of myocardial
386 infarction or coronary artery disease, the ORs were comparable to those of the UKB (OR for
387 myocardial infarction: 0.67 95%CI: 0.53-0.85, $p=0.0006$; OR for coronary artery disease: 0.74
388 95%CI: 0.53-0.85, $p=0.003$, **Supplementary Figure S2** and **Supplementary Table S4**). When
389 meta-analyzing these data with UKB reaching a sample size of 1,456,011 individuals including
390 1,314 M249K carriers (111,394 and 207,019 cases of myocardial infarction and coronary artery
391 disease, respectively), we found M249K carriers to have 34% lower odds of suffering a myocardial
392 infarction (OR: 0.66 95%CI: 0.54-0.81, $p=6.1 \times 10^{-5}$) and 26% lower odds of coronary artery
393 disease (OR: 0.74 95%CI: 0.62-0.87, $p=2.9 \times 10^{-4}$, **Figure 4D-E**, **Supplementary Table S4**).

394

395 **Phenome-wide association study**

396 As a last step, we performed a PheWAS to explore whether **M249K** is associated with potential
397 adverse effects that would raise signals for possible side-effects of any CCR2-targeting
398 treatments. Because we lacked statistical power for most of the outcomes, we restricted our
399 analyses to endpoints with ≥ 10 cases in the carrier group of the UKB. To increase statistical
400 power, we meta-analyzed our results with the Geisinger cohort. Across all phenotypes only
401 myocardial infarction showed an association with M249K that passed the FDR-corrected $p < 0.05$
402 threshold. Coronary atherosclerosis and angina pectoris were also less frequent ($p < 0.05$) among

403 carriers although only at a nominal non-corrected $p < 0.05$ (Figure 4A). No infectious disease
404 phenotypes were found to be more common ($p < 0.05$) among M249K carriers (Supplementary
405 Table S5). Senile cataract was more common among carriers ($p < 0.05$). Among UKB participants,
406 we found no evidence for an association between carrier status for a *CCR2* damaging variants
407 and survival over a 15-year follow-up period (Figure 4B).

408

409 DISCUSSION

410 Using data from 1.5M individuals we found that heterozygous carriers of a rare experimentally
411 confirmed loss-of-function *CCR2* variant (M249K) are at lower lifetime risk of myocardial infarction
412 and coronary artery disease. Carriers of this variant showed no differences in LDL cholesterol,
413 blood pressure, BMI, HbA1c and C-reactive protein levels, indicating that damaging *CCR2*
414 variants exert their effects independently of conventional vascular risk factors targeted by
415 available atheroprotective treatments. On the other hand, we found no evidence of associations
416 with higher risk of infectious diseases or overall mortality among carriers. Collectively, our results
417 provide genetic support for *CCR2* as a potential therapeutic target for atherosclerotic
418 cardiovascular disease.

419 Our findings extend our previous results from a Mendelian randomization study suggesting a
420 higher atherosclerosis risk among individuals with genetic predisposition to elevated CCL2
421 levels.¹⁷ That study focused on common genetic variants distributed across the genome and
422 shown to influence CCL2 levels in *trans*. In contrast, the current study assessed damaging rare
423 genetic variants within the *CCR2* gene. The functional impact of M249K, the most frequent variant
424 among those associated with atherosclerotic disease, was experimentally confirmed. As such,
425 our approach is unlikely to be confounded by pleiotropic effects of the variants. Despite the lack
426 of data from clinical trials targeting *CCR2* in patients with cardiovascular disease, studies in
427 experimental models of atherosclerosis have provided supportive evidence for an
428 atheroprotective effect of pharmacologically targeting *CCR2*.¹³

429 Our work consistently connects these findings to humans and provides a rationale for conducting
430 a clinical trial with pharmacological targeting of *CCR2* in patients with atherosclerosis. Ultimately,
431 only clinical testing can provide evidence in favor of or against pharmacological targeting of *CCR2*
432 for patients with atherosclerosis. A major bottleneck for initiating a clinical trial would be the need
433 for proof of concept in a phase 2 trial before a trial with hard endpoint is conducted. Given the
434 evidence that CRP levels are not directly affected by the CCL2/*CCR2* axis,¹⁵ an intermediate
435 endpoint is needed that captures plaque inflammation, and in particular, macrophage

436 accumulation.¹³ PET imaging, particularly with an FDG tracer, has shown promise for detecting
437 macrophage content in large plaques and has already been used in phase 2 trials targeting plaque
438 inflammation.³⁸⁻⁴⁰ In addition, recent advances in tracer development have enabled the
439 development of a tracer that specifically binds to CCR2.⁴¹ Initial data from patients have shown
440 promise in imaging monocyte recruitment to the heart following myocardial infarction.⁴¹

441 Interestingly, we found no evidence supporting a connection of *M249K* with established
442 pharmacological targets of atherosclerosis, such as LDL cholesterol, hyperglycemia, or elevated
443 blood pressure. This implies that any benefit from CCR2-targeting approaches would be expected
444 to be independent of available preventive approaches against atherosclerotic disease. Also, we
445 found no evidence of associations with circulating C-reactive protein levels, a biomarker of the
446 activity of the IL-6 signaling pathway that is also the target of atheroprotective anti-inflammatory
447 treatments currently under development.⁴² Based on this, our findings suggest that CCR2
448 inhibition might have an atheroprotective effect on top of such approaches, which in turn might be
449 an argument to pursue approaches embracing combination therapies.

450 Our PheWAS analysis was limited by low statistical power. Nevertheless, it is noteworthy that we
451 found no evidence for an association of *M249K* with risk of infections, which is a potential barrier
452 to the use of atheroprotective anti-inflammatory treatments. This is in line with previous early
453 phase clinical trials testing inhibitors of CCR2 for other indications, which also found no important
454 safety concerns.⁴³⁻⁴⁵ Furthermore, we found no evidence of associations with overall survival,
455 minimizing concerns about a significant impact on unknown fatal adverse effects. The reason why
456 we do not see a protective effect on survival despite the effect on risk of myocardial infarction
457 could be related to statistical power and length of follow-up. It is a common observation that
458 medications with strong effects on lowering cardiovascular risk, such as statins, have failed to
459 show survival benefits.

460 Our study has limitations. First, despite leveraging the largest available whole-exome sequencing
461 studies totaling almost 1.5 million individuals, our results for the PheWAS analyses are still limited
462 by low statistical power and should be interpreted cautiously. Given the rarity of the damaging
463 CCR2 variants, any association with rare potential side-effects would ultimately be undetectable
464 in the context of this study. While formal statistical replication is precluded by this power issue,
465 the consistent effect directions and the overall significance of the meta-analysis raise confidence
466 that the identified association is valid. Further, our main results for associations between *M249K*
467 and myocardial infarction or coronary artery disease failed to reach the formal thresholds of
468 statistical significance for gene-based or variant-based testing (2.7×10^{-6} and 5×10^{-8} , respectively).
469 As such, this result should be interpreted cautiously as suggestive. Genetic analyses with rare

470 variants are still underpowered, as also highlighted in recent burden test studies from the UK
471 Biobank, where no gene showed significant associations with either myocardial infarction or
472 ischemic stroke.⁴⁶ Future research should aim to pool additional data as they become available.
473 Second, UK Biobank consists primarily of European individuals, and consequently, we detected
474 damaging *CCR2* variants that are predominantly detected in European populations. As such, our
475 results should not be extended to non-European individuals. Third, all analyses are based on
476 individuals heterozygous for the damaging *CCR2* variants, as we found no homozygotes for
477 damaging *CCR2* variants. While this lack of homozygotes can be fully explained by the frequency
478 of damaging *CCR2* variants in the general population, it remains unknown whether homozygous
479 status for damaging *CCR2* variants would lead to potentially fatal complications. Fourth, the data
480 from the UKB do not allow a distinction to be made between classical and non-classical
481 monocytes. The available data suggest that *CCL2* only acts on classical *CCR2*+ monocytes in
482 humans or *Ly6C^{hi}* monocytes in mice. Experimental studies in mice have revealed that *Ccr2*-
483 deficient *Ly6C^{hi}* monocytes are trapped in the bone marrow and are not mobilized after
484 infections.³² Future studies in humans should further explore the impact of the examined
485 mutations on monocytes subtypes. However, it should be noted that inhibition of monocyte
486 recruitment from the circulation into atherosclerotic lesions is the main suspected mechanism by
487 which *CCR2* damaging variants act, and the effects of lowering monocyte counts remain to be
488 tested.

489 In conclusion, we found that heterozygous carriers of a rare damaging *CCR2* variant are at lower
490 lifetime risk of myocardial infarction and coronary artery disease without carrying a higher risk of
491 infections. This provides further genetic support for the concept that pharmacological targeting of
492 *CCR2* might be an efficient and viable immunotherapeutic strategy to prevent atherosclerotic
493 cardiovascular disease.

494

495 **Conflicts of Interest:** SMD receives research support from RenalytixAI and personal fees from
496 Calico Labs, both outside the current work. MEM receives funding from Regeneron
497 Pharmaceutical Inc. unrelated to this work. RD has received research support from AstraZeneca
498 and Goldfinch Bio, not related to this work. BMP serves on the Steering Committee of the Yale
499 Open Data Access Program funded by Johnson & Johnson. CDA has received sponsored
500 research support from Bayer AG, has consulted for ApoPharma, and is a member of the Editorial
501 Board of *Neurology*. LMR is a consultant for the TOPMed Administrative Coordinating Center
502 (through WeStat). The other authors have nothing to declare.

503

504 **Acknowledgements:** Marios K. Georgakis is supported with a Walter-Benjamin fellowship (GZ:
505 GE 3461/1-1, ID: 466957018), a clinician-scientist grant from the Munich Cluster for Systems
506 Neurology (EXC 2145 SyNergy, ID 390857198), and an Emmy Noether grant (GZ: GE 3461/2-1,
507 ID 512461526) by the German Research Foundation (Deutsche Forschungsgemeinschaft, DFG),
508 as well as by the Fritz-Thyssen Foundation (Ref. 10.22.2.024MN) and the Hertie Foundation
509 (Hertie Network of Excellence in Clinical Neuroscience, ID P1230035). Scott M. Damrauer is
510 supported by IK2-CX001780. We acknowledge the Penn Medicine BioBank (PMBB) for providing
511 data and thank the patient-participants of Penn Medicine who consented to participate in this
512 research program. We would also like to thank the Penn Medicine BioBank team and Regeneron
513 Genetics Center for providing genetic variant data for analysis. The PMBB is approved under IRB
514 protocol# 813913 and supported by Perelman School of Medicine at University of Pennsylvania,
515 a gift from the Smilow family, and the National Center for Advancing Translational Sciences of
516 the National Institutes of Health under CTSA award number UL1TR001878. **We thank Geisinger
517 MyCode Community Health Initiative and Geisinger-Regeneron DiscovEHR collaboration
518 contributors who have been critical in the generation of the original data used for this study. This
519 publication does not represent the views of the Department of Veterans Affairs or the United
520 States Government.** Paul S. de Vries, Natalie R. Hasbani, and Alanna C. Morrison were supported
521 by R01 HL146860. Joshua C. Bis and Bruce M. Psaty were funded in part by R01HL105756.
522 Reading of the carotid IMT measures was supported by N01HC85085, N01HC45133; Coronary
523 Calcium scans were supported by R01HL64587. Kendra A. Young is supported by NHLBI U01
524 HL089897 and U01 HL089856. Sharon M. Lutz was supported by R01 MH129337. Nicholette D.
525 Palmer, Barry I. Freedman and Donald W. Bowden were supported by R01 AG058921. Patricia
526 A. Peyser was supported by R01 HL146860. Lawrence F. Bielak was supported by R01
527 HL146860. LMR was supported by T32 HL129982 and by the National Center for Advancing
528 Translational Sciences, National Institutes of Health, through Grant KL2TR002490. **Christopher
529 D. Anderson receives sponsored research support from the US National Institutes of Health
530 (R01NS103924, U01NS069673), the American Heart Association (AHA 21SFRN812095). Whole
531 genome sequencing (WGS) for the Trans-Omics in Precision Medicine (TOPMed) program was
532 supported by the National Heart, Lung and Blood Institute (NHLBI). Cohort-specific
533 acknowledgements for studies included in the TOPMed program are provided in **Supplementary
534 Table S6.** Jürgen Bernhagen is supported by grants from the Deutsche Forschungsgemeinschaft
535 (DFG; CRC 1123 [A3], BE 1977/14-1, and Munich Cluster for Systems Neurology [SyNergy, EXC
536 2145; ID390857198]. Martin Dichgans is supported by grants from the Deutsche
537 Forschungsgemeinschaft (DFG; CRC 1123 [B3], DI-722/16-1 [ID: 428668490], DI-722/21-1, and
538 Munich Cluster for Systems Neurology [SyNergy, EXC 2145; ID390857198]), the Leducq**

539 Foundation, the flagship P4-medicine project *DigiMed* Bayern and the Vascular Dementia
540 Research Foundation.

541

542

543

544 **REFERENCES**

545

- 546 1. Diseases, G.B.D. & Injuries, C. Global burden of 369 diseases and injuries in 204 countries
547 and territories, 1990-2019: a systematic analysis for the Global Burden of Disease Study
548 2019. *Lancet* **396**, 1204-1222 (2020).
- 549 2. Guedeney, P., *et al.* Residual Inflammatory Risk in Patients With Low LDL Cholesterol
550 Levels Undergoing Percutaneous Coronary Intervention. *J Am Coll Cardiol* **73**, 2401-2409
551 (2019).
- 552 3. Ridker, P.M. How Common Is Residual Inflammatory Risk? *Circ Res* **120**, 617-619 (2017).
- 553 4. Lutgens, E., *et al.* Immunotherapy for cardiovascular disease. *Eur Heart J* **40**, 3937-3946
554 (2019).
- 555 5. Weber, C. & Noels, H. Atherosclerosis: current pathogenesis and therapeutic options. *Nat*
556 *Med* **17**, 1410-1422 (2011).
- 557 6. Ridker, P.M., *et al.* Antiinflammatory Therapy with Canakinumab for Atherosclerotic
558 Disease. *N Engl J Med* **377**, 1119-1131 (2017).
- 559 7. Tardif, J.C., *et al.* Efficacy and Safety of Low-Dose Colchicine after Myocardial Infarction.
560 *The New England journal of medicine* **381**, 2497-2505 (2019).
- 561 8. Nidorf, S.M., *et al.* Colchicine in Patients with Chronic Coronary Disease. *N Engl J Med*
562 **383**, 1838-1847 (2020).
- 563 9. Leung, Y.Y., Yao Hui, L.L. & Kraus, V.B. Colchicine--Update on mechanisms of action and
564 therapeutic uses. *Semin Arthritis Rheum* **45**, 341-350 (2015).
- 565 10. Opstal, T.S.J., *et al.* Colchicine Attenuates Inflammation Beyond the Inflammasome in
566 Chronic Coronary Artery Disease: A LoDoCo2 Proteomic Substudy. *Circulation* **142**, 1996-
567 1998 (2020).
- 568 11. Ridker, P.M. From C-Reactive Protein to Interleukin-6 to Interleukin-1: Moving Upstream
569 To Identify Novel Targets for Atheroprotection. *Circ Res* **118**, 145-156 (2016).
- 570 12. Mackay, C.R. Chemokines: immunology's high impact factors. *Nat Immunol* **2**, 95-101
571 (2001).
- 572 13. Živković, L., Asare, Y., Bernhagen, J., Dichgans, M. & Georgakis, M.K. Pharmacological
573 Targeting of the CCL2/CCR2 Axis for Atheroprotection: A Meta-Analysis of Preclinical
574 Studies. *Arteriosclerosis, thrombosis, and vascular biology* **42**, e131-e144 (2022).
- 575 14. Georgakis, M.K., Bernhagen, J., Heitman, L.H., Weber, C. & Dichgans, M. Targeting the
576 CCL2-CCR2 axis for atheroprotection. *Eur Heart J* **43**, 1799-1808 (2022).

- 577 15. Georgakis, M.K., *et al.* Circulating Monocyte Chemoattractant Protein-1 and Risk of
578 Stroke: Meta-Analysis of Population-Based Studies Involving 17 180 Individuals. *Circ Res*
579 **125**, 773-782 (2019).
- 580 16. Georgakis, M.K., *et al.* Association of Circulating Monocyte Chemoattractant Protein-1
581 Levels With Cardiovascular Mortality: A Meta-analysis of Population-Based Studies.
582 *JAMA Cardiol* **6**, 587-592 (2021).
- 583 17. Georgakis, M.K., *et al.* Genetically Determined Levels of Circulating Cytokines and Risk
584 of Stroke. *Circulation* **139**, 256-268 (2019).
- 585 18. Georgakis, M.K., *et al.* Genetic Architecture of Stroke of Undetermined Source: Overlap
586 with Known Stroke Etiologies and Associations with Modifiable Risk Factors. *Ann Neurol*
587 **91**, 640-651 (2022).
- 588 19. Georgakis, M.K., *et al.* Monocyte-Chemoattractant Protein-1 Levels in Human
589 Atherosclerotic Lesions Associate With Plaque Vulnerability. *Arteriosclerosis, thrombosis,*
590 *and vascular biology* **41**, 2038-2048 (2021).
- 591 20. Interleukin-6 Receptor Mendelian Randomisation Analysis, C., *et al.* The interleukin-6
592 receptor as a target for prevention of coronary heart disease: a mendelian randomisation
593 analysis. *Lancet* **379**, 1214-1224 (2012).
- 594 21. Cohen, J.C., Boerwinkle, E., Mosley, T.H., Jr. & Hobbs, H.H. Sequence variations in
595 PCSK9, low LDL, and protection against coronary heart disease. *The New England journal*
596 *of medicine* **354**, 1264-1272 (2006).
- 597 22. Clarke, R., *et al.* Genetic variants associated with Lp(a) lipoprotein level and coronary
598 disease. *N Engl J Med* **361**, 2518-2528 (2009).
- 599 23. Nioi, P., *et al.* Variant ASGR1 Associated with a Reduced Risk of Coronary Artery Disease.
600 *N Engl J Med* **374**, 2131-2141 (2016).
- 601 24. Stitzel, N.O., *et al.* ANGPTL3 Deficiency and Protection Against Coronary Artery Disease.
602 *J Am Coll Cardiol* **69**, 2054-2063 (2017).
- 603 25. Sudlow, C., *et al.* UK biobank: an open access resource for identifying the causes of a
604 wide range of complex diseases of middle and old age. *PLoS Med* **12**, e1001779 (2015).
- 605 26. Backman, J.D., *et al.* Exome sequencing and analysis of 454,787 UK Biobank participants.
606 *Nature* **599**, 628-634 (2021).
- 607 27. Abraham, G., Qiu, Y. & Inouye, M. FlashPCA2: principal component analysis of Biobank-
608 scale genotype datasets. *Bioinformatics* **33**, 2776-2778 (2017).
- 609 28. Malik, R., *et al.* Whole-exome sequencing reveals a role of HTRA1 and EGFL8 in brain
610 white matter hyperintensities. *Brain : a journal of neurology* **144**, 2670-2682 (2021).
- 611 29. McLaren, W., *et al.* The Ensembl Variant Effect Predictor. *Genome Biol* **17**, 122 (2016).

- 612 30. Ioannidis, N.M., *et al.* REVEL: An Ensemble Method for Predicting the Pathogenicity of
613 Rare Missense Variants. *Am J Hum Genet* **99**, 877-885 (2016).
- 614 31. Karczewski, K.J., *et al.* The mutational constraint spectrum quantified from variation in
615 141,456 humans. *Nature* **581**, 434-443 (2020).
- 616 32. Serbina, N.V. & Pamer, E.G. Monocyte emigration from bone marrow during bacterial
617 infection requires signals mediated by chemokine receptor CCR2. *Nat Immunol* **7**, 311-
618 317 (2006).
- 619 33. Tsou, C.L., *et al.* Critical roles for CCR2 and MCP-3 in monocyte mobilization from bone
620 marrow and recruitment to inflammatory sites. *J Clin Invest* **117**, 902-909 (2007).
- 621 34. Shi, C., *et al.* Bone marrow mesenchymal stem and progenitor cells induce monocyte
622 emigration in response to circulating toll-like receptor ligands. *Immunity* **34**, 590-601
623 (2011).
- 624 35. Mbatchou, J., *et al.* Computationally efficient whole-genome regression for quantitative
625 and binary traits. *Nat Genet* **53**, 1097-1103 (2021).
- 626 36. Wu, P., *et al.* Mapping ICD-10 and ICD-10-CM Codes to Phecodes: Workflow
627 Development and Initial Evaluation. *JMIR Med Inform* **7**, e14325 (2019).
- 628 37. Taliun, D., *et al.* Sequencing of 53,831 diverse genomes from the NHLBI TOPMed
629 Program. *Nature* **590**, 290-299 (2021).
- 630 38. Fayad, Z.A., *et al.* Safety and efficacy of dalcetrapib on atherosclerotic disease using novel
631 non-invasive multimodality imaging (dal-PLAQUE): a randomised clinical trial. *Lancet* **378**,
632 1547-1559 (2011).
- 633 39. Gaztanaga, J., *et al.* A phase 2 randomized, double-blind, placebo-controlled study of the
634 effect of VIA-2291, a 5-lipoxygenase inhibitor, on vascular inflammation in patients after
635 an acute coronary syndrome. *Atherosclerosis* **240**, 53-60 (2015).
- 636 40. van Wijk, D.F., *et al.* Nonpharmacological lipoprotein apheresis reduces arterial
637 inflammation in familial hypercholesterolemia. *J Am Coll Cardiol* **64**, 1418-1426 (2014).
- 638 41. Liu, Y., *et al.* Association between circulating monocyte subsets and in-stent restenosis
639 after coronary stent implantation in patients with ST-elevation myocardial infarction. *Circ*
640 *J* **74**, 2585-2591 (2010).
- 641 42. Ridker, P.M., *et al.* IL-6 inhibition with ziltivekimab in patients at high atherosclerotic risk
642 (RESCUE): a double-blind, randomised, placebo-controlled, phase 2 trial. *Lancet* **397**,
643 2060-2069 (2021).
- 644 43. Friedman, S.L., *et al.* A randomized, placebo-controlled trial of cenicriviroc for treatment
645 of nonalcoholic steatohepatitis with fibrosis. *Hepatology* **67**, 1754-1767 (2018).

- 646 44. de Zeeuw, D., *et al.* The effect of CCR2 inhibitor CCX140-B on residual albuminuria in
647 patients with type 2 diabetes and nephropathy: a randomised trial. *Lancet Diabetes*
648 *Endocrinol* **3**, 687-696 (2015).
- 649 45. Vergunst, C.E., *et al.* Modulation of CCR2 in rheumatoid arthritis: a double-blind,
650 randomized, placebo-controlled clinical trial. *Arthritis Rheum* **58**, 1931-1939 (2008).
- 651 46. Karczewski, K.J., *et al.* Systematic single-variant and gene-based association testing of
652 thousands of phenotypes in 394,841 UK Biobank exomes. *Cell Genom* **2**, 100168 (2022).
653
654

655 **Figure 1. Damaging CCR2 variants.** Domain structure of the CCR2 protein and position of the
 656 predicted loss-of-function (LoF) or missense damaging (REVEL>0.5) variants present in >2 UK
 657 Biobank participants in the CCR2 exonic regions.

658

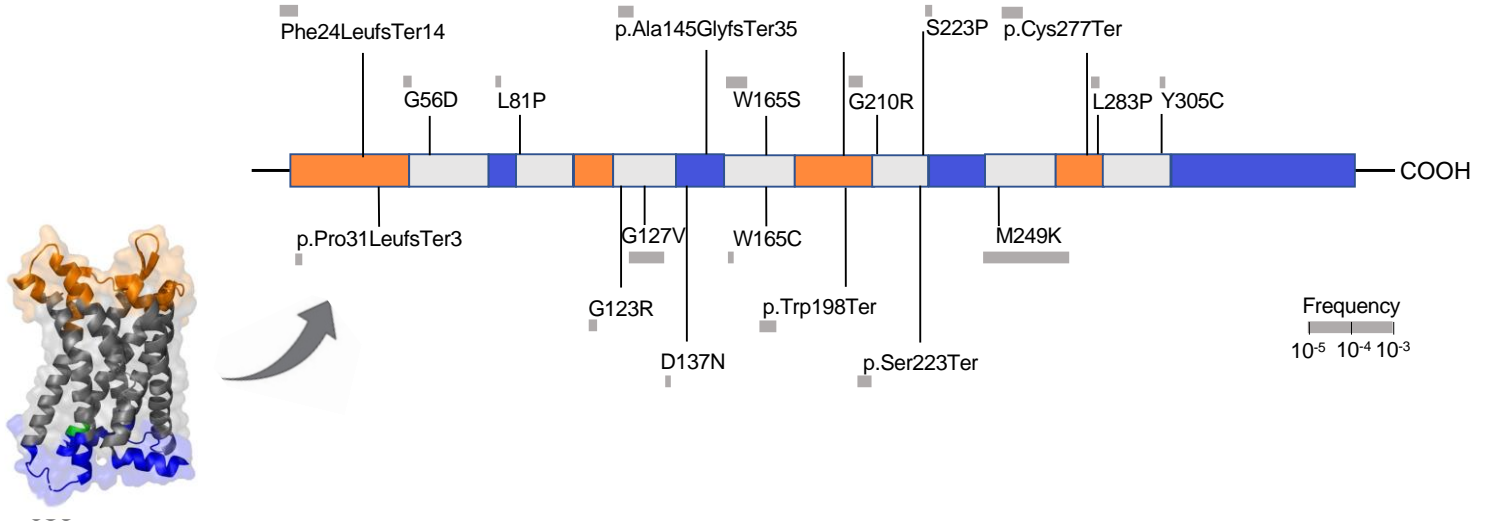


Figure 2. Associations of rare computationally predicted damaging CCR2 variants with risk of atherosclerotic cardiovascular disease in the UK Biobank. Associations of 45 predicted loss-of-function (LoF) or damaging (REVEL>0.5) CCR2 variants (minimum allele frequency <0.01) in burden tests with **(A)** risk of cardiovascular disease endpoints and **(B)** a combined atherosclerosis endpoint as well as severe clinical atherosclerotic disease defined by manifestations in at least 2 vascular beds (coronary arteries, cerebrovascular system, peripheral arteries of extremities, aorta) among UK Biobank participants of European ancestry. **(C)** Prevalence of clinically manifest atherosclerosis across 4 vascular beds (coronary arteries, cerebrovascular system, peripheral arteries of extremities, aorta) among carriers and non-carriers of the 45 predicted LoF or damaging CCR2 variants. The odds ratio (OR) is derived from ordinal regression adjusted for age, sex, and the first 5 ancestral principal components.

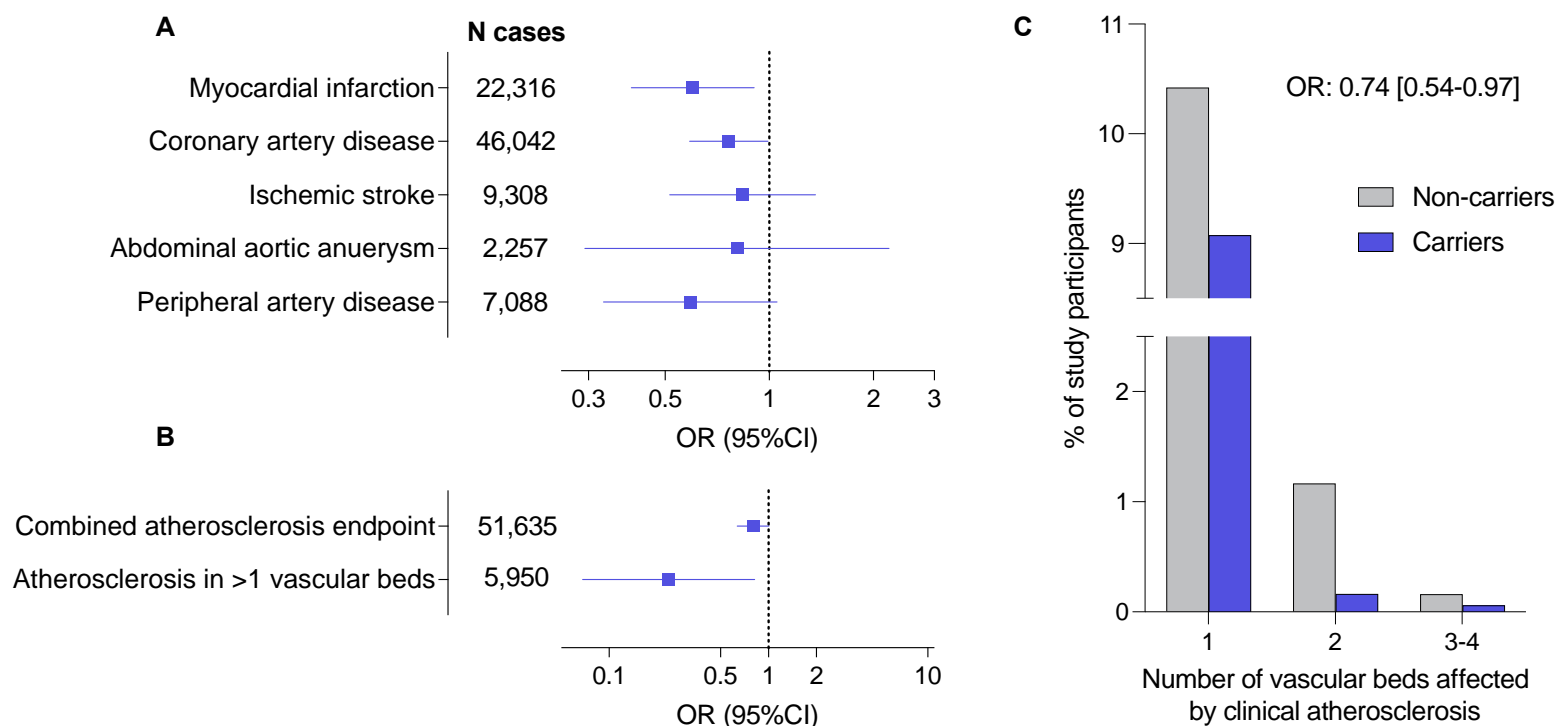


Figure 3. Validation of the loss-of-function effect of M249K (3:46358273:T:A) on CCL2-driven monocyte chemotaxis. (A) Experimental outline of chemotaxis assay. Transfected CCR2^{-/-} THP-1 cells (marked in green) and non-transfected cells (marked in red) were used in a Transwell chemotaxis assay. The cells that moved to the lower chamber were collected, stained, and quantified using flow cytometry. (B) Chemotaxis in response to increasing concentrations of CCL2 for human CCR2-knockout monocytic THP-1 cells transfected with the mutant M249K vs. wild-type CCR2, as determined in a trans-well migration assay (comparisons derived from two-way ANOVA, ns: $p > 0.05$, *** $p < 0.001$, **** $p < 0.0001$). (C) Results of cyclic AMP (cAMP) assay. Shown is the cAMP activity in HEK293T cells transfected with either empty vector or wild-type or M249K CCR2 in response to different concentrations of CCL2. Results are presented as “Ratio 665/620 x 10,000” (ratio of fluorescence at 665 nm and 620 nm x 10,000). (D) Associations of M249K with counts of different leukocyte populations in the subset of European ancestry participants of the UK Biobank (N=393,838), as derived from linear regression models adjusted for age, sex, and the first 5 ancestral principal components.

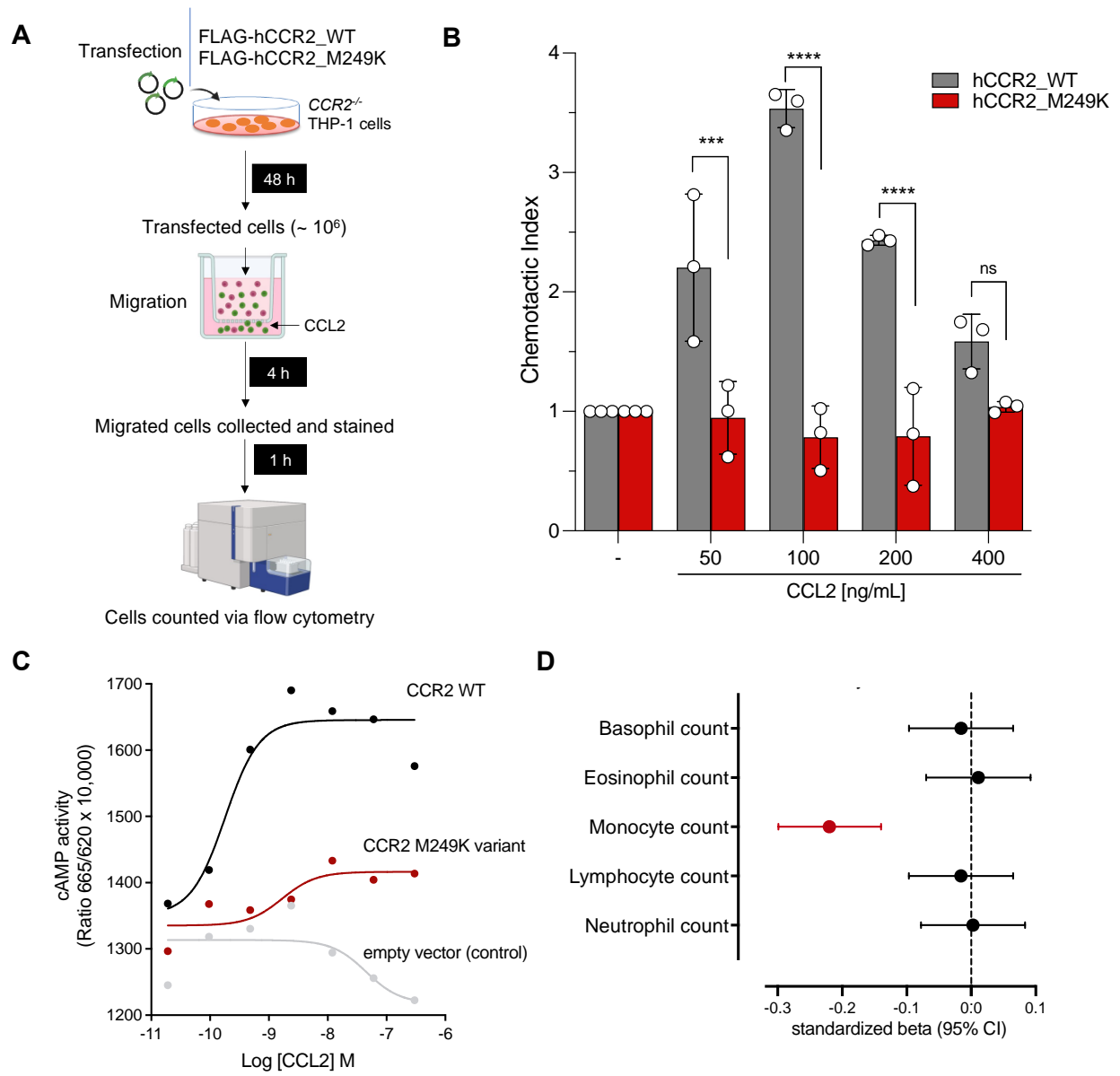
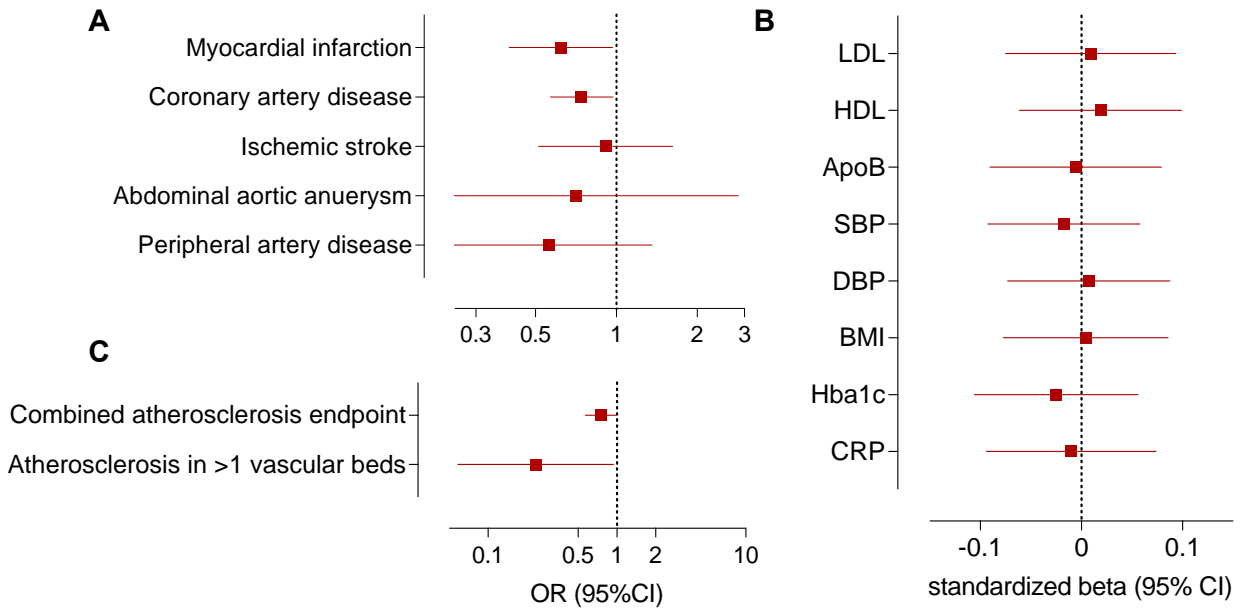


Figure 4. Association of the loss-of-function M249K CCR2 variant with lifetime cardiovascular risk. Associations of the M249K CCR2 variant with risk of **(A)** cardiovascular disease endpoints, **(B)** a combined atherosclerosis endpoint and severe clinical atherosclerotic disease defined by manifestations in at least 2 vascular beds (coronary arteries, cerebrovascular system, peripheral arteries of extremities, aorta), and **(C)** conventional vascular risk biomarkers in models adjusted for age, sex, and the first five principal components among UK Biobank participants of European ancestry. HbA1c and C-reactive protein levels are log-transformed for normalization. Fixed-effects and random-effects meta-analysis of the effects of M249K on risk of **(D)** myocardial infarction and **(E)** coronary artery disease across 7 population- and hospital-based biobanks. The effects correspond to odds ratios (OR) derived from logistic regression models adjusted for age, sex, and the first 5 ancestral principal components in each biobank.



D

Study	Cases	Controls	Odds Ratio	OR	95%-CI
UKB	19,974	373,442		0.62	[0.40; 0.97]
TOPMed	6,425	45,307		0.46	[0.22; 0.97]
deCODE	25,448	320,544		0.73	[0.17; 3.19]
PMBB	5,653	38,068		1.09	[0.47; 2.50]
MGB	5,575	30,844		0.45	[0.20; 1.02]
MVP	39,613	399,292		0.94	[0.61; 1.45]
Geisinger	8,706	137,120		0.56	[0.39; 0.81]
Fixed effect model	111,394	1,344,617		0.66	[0.54; 0.81]
Random effects model				0.66	[0.52; 0.84]

Heterogeneity: $I^2 = 10\%$, $p = 0.35$

E

Study	Cases	Controls	Odds Ratio	OR	95%-CI
UKB	46,042	392,652		0.74	[0.55; 0.99]
TOPMed	12,467	48,300		0.41	[0.22; 0.78]
deCODE	43,684	306,935		0.50	[0.13; 1.89]
PMBB	9,765	33,956		1.73	[0.72; 4.16]
MGB	14,368	22,051		0.41	[0.18; 0.95]
MVP	53,371	266,264		0.95	[0.64; 1.40]
Geisinger	27,322	118,507		0.72	[0.55; 0.95]
Fixed effect model	207,019	1,118,665		0.74	[0.63; 0.87]
Random effects model				0.74	[0.63; 0.87]

Heterogeneity: $I^2 = 44\%$, $p = 0.10$

Figure 5. Phenome-wide association study of the damaging M249K CCR2 variant and associations with overall survival. (A) Results from a phenome-wide association study in UK Biobank and the Geisinger DiscovEHR-MyCode cohort for the M249K CCR2 variant among participants of European ancestry. Only phecodes with ≥ 10 cases in UK Biobank were analyzed. We present the names of phenotypes associated with rare CCR2 variants at $p < 0.05$. Only myocardial infarction reached an FDR-corrected p -value of < 0.05 . The results are presented as log-Odds Ratios (log-OR). **(B)** Kaplan-Meier curves for overall survival across 15 years of follow-up among carriers and non-carriers of the M249K CCR2 variant in the European subset of UK Biobank participants.

